

# The Performance of State Charter Schools in Georgia, 2021-22

By Jeffrey C. Schiman, Ph.D.\*  
Associate Professor  
Department of Economics  
Parker College of Business  
Georgia Southern University

16 May 2023



---

\* Many helpful comments and suggestions about value-added models and charter schools as well as permission to use sections of text from the 2018/19 report were provided by Tim Sass, Ph.D.

## Table of Contents

Executive Summary .....	3
I. Introduction and Background.....	6
II. Results – All State Charters.....	14
A. <i>Value-Added and Student Growth Model Estimates</i> .....	14
B. <i>Summary of Findings</i> .....	15
III. Results – Individual School Summaries.....	26
Academy for Classical Education.....	27
Atlanta Heights Charter School.....	30
Atlanta SMART Academy.....	32
Atlanta Unbound Academy.....	34
Baconton Community Charter School.....	36
Brookhaven Innovation Academy.....	39
Cherokee Charter Academy.....	41
Cirrus Academy Charter.....	43
Coweta Charter Academy.....	45
D.E.L.T.A. STEAM Academy.....	47
DuBois Integrity Academy.....	49
Ethos Classical Charter School.....	51
Fulton Leadership Academy.....	53
Furlow Charter School.....	55
Genesis Academy for Boys.....	58
Genesis Academy for Girls.....	60
Georgia Connections Academy.....	62
Georgia Cyber Academy.....	64
Georgia Fugees Academy Charter School.....	67
Georgia School for Innovation and the Classics.....	69
International Charter Academy of Georgia.....	72
International Academy of Smyrna.....	74
International Charter School of Atlanta.....	76
Ivy Preparatory Academy at Kirkwood for Girls.....	78
Liberty Tech Charter School.....	80

Northwest Classical.....	82
Odyssey School .....	84
Pataula Charter Academy .....	86
Resurgence Hall.....	89
SAIL – School for Arts-Infused Learning .....	91
Scintilla Charter Academy.....	93
SLAM Academy of Atlanta .....	95
Southwest Georgia STEM Charter.....	97
Spring Creek Charter Academy .....	100
Statesboro STEAM College, Careers, Arts & Technology Academy .....	102
Utopian Academy for the Arts .....	104
Yi Hwang Academy of Language Excellence.....	106
IV. References.....	108
Appendix: Value Added Model Approach .....	110
A. <i>Value-Added Model Specification and Estimation</i> .....	110
B. <i>Student Growth Percentile Model Specification and Estimation</i> .....	111
C. <i>Value-Added Model Estimates</i> .....	113

## Executive Summary

A total of 37 state charter schools operated in Georgia during the 2021-22 school year. This report describes these 37 schools and measures their performance using two test-based measures of school performance: value-added and student growth percentiles. The value-added measure is the result of a two-step process. In the first step, the difference between a student's actual score and their predicted score (which is based on their observable characteristics) is computed, then these differences are averaged across all tested students in a school. In the second step, adjustments to a school's score are made to account for the differences in the population of students it serves. Unlike in the 2020-21 report, in this year's report value added is based on adjacent year scores meaning that value added is calculated based on changes in performance between the 2021 to 2022 school years. The student-growth-percentile approach ranks each student's performance relative to that of other students with the same or similar test score history, and then averages these rankings across all tested students in a school grade group which include K-5, 6-8, and 9-12. Each school's performance on value added and student growth percentiles is compared to all other schools in the state (that had at least 15 test takers) and to the schools in which its students would otherwise have attended had they not attended the charter (hereafter referred to as the relevant comparison schools).

*Key findings are:*

**State charter schools serve diverse student bodies, and many provide learning environments that differ from those of traditional public schools.** State charter schools vary along multiple dimensions, including grade levels, student demographics, instructional mode (face-to-face or virtual), curricular focus and geographic area served.

- Grade Levels
  - Many state charters (17 of 37) serve a combination of elementary (K-5) and middle grades (6-8).
  - 6 serve only elementary grades.
  - 1 serves only middle school grades.
  - None serve only high school grades (9-12).
  - 10 schools serve elementary, middle and at least some high school grades.
  - The remaining 3 schools serve both middle and high school grades.
- Student Demographics
  - Four of the 37 schools are single-gender schools.
  - At 12 schools, Black or African American enrollment is 90 percent or more.
  - For 4 schools, over half of students are directly certified, a proxy for economically disadvantaged that is defined as living in households receiving SNAP or TANF benefits, foster youth, unaccompanied youth, or are classified as homeless or migrants.

**Four state charter schools serving elementary grades performs at a level that one can say with 95 percent confidence is above the average public elementary school in the state with a similar student population.**

- 32 state charter schools serve elementary grades with at least 15 tested students.

- For four schools, the cross-subject average performance is above the state average for all elementary schools at a level that is statistically significant.
- For twenty schools, the cross-subject average performance is not distinguishable from the state average for all elementary schools in terms of statistical significance.
- For eight schools, the cross-subject average performance is below the state average for all elementary schools at a level that is statistically significant.

**Three state charter schools perform statistically higher than the average of public elementary schools their students were otherwise zoned to attend.**

- Of the 32 state charters serving elementary grades with at least 15 tested students, 3 have cross-subject average ELA and Math performance that is statistically higher than the average elementary school their students were otherwise zoned to attend.
- For 16 schools, the cross-subject average performance is statistically lower than the average of all elementary schools in their relevant comparison group.
- For 13 charter schools, the cross-subject average performance was statistically indistinguishable from the average elementary school in its relevant comparison group.

**Over half of state charter schools serving middle grades perform at a level that is statistically indistinguishable from the average public middle school in the state with a similar student population.**

- Thirty state charter schools serve middle grades with at least 15 tested students.
- For 7 schools, their cross-subject average performance is above the state average for all middle schools at a level that is statistically significant.
- For 19 state charter schools, their cross-subject average performance is indistinguishable from the state average for all middle schools.
- For 4 state charter schools, their cross-subject average performance is below the state average for all middle schools at a level that is statistically significant.

**5 state charter schools serving middle grades performed at a level that is clearly better than the average of all middle schools in which their students were otherwise zoned to attend.**

- 5 schools cross-subject ELA and Math performance is higher than the average middle school in its relevant comparison group.
- For 18 schools, the cross-subject average performance is indistinguishable from the average middle school in their relevant comparison group.
- For 7 schools, the cross-subject average performance is below the average middle school in their relevant comparison group.

**2 state charter schools serving high school grades perform at a level that is statistically higher than the average public high school in the state.**

- 11 state charter schools serve student in high school grades with at least 15 tested students.
- In 2 high schools, their cross-subject average performance is statistically higher than the state average for all high schools.
- In 4 high schools, their cross-subject average performance is indistinguishable than the state average of all high schools.
- In 5 high schools, their individual test-school performance is below the state average.

**2 state charter schools serving high school grades perform at a level that is statistically higher than the average public high school in which their students were otherwise zoned to attend.**

- In 2 high schools, their cross-subject average performance is statistically higher than the state average of their relevant comparison group.
- In 4 high schools, their cross-subject average performance is indistinguishable than the state average of their relevant comparison group.
- In 5 high schools, their individual test-school performance is below the average of their relevant comparison group.

## I. Introduction and Background

Thirty-seven state charter schools operated in Georgia during the 2021/22 school year. Even though the current State Charter Schools Commission (SCSC) has only been in operation since 2013, a number of the state charter schools began operation well before 2013. Some charter schools were originally formed as state chartered special schools or were initially chartered by the original Georgia Charter Schools Commission, which was declared unconstitutional by the Georgia Supreme Court.<sup>1</sup> Table 1 summarizes information about all 37 schools that operated during the 2021/22 school year. The information provided includes when the school opened, whether it is affiliated with an educational service provider (ESP), grades served, school model, and attendance zone. The 37 schools vary in their structure, mission, and service area.

The state charter schools also vary considerably in the populations of students they serve, as illustrated in Table 2. There is considerable diversity in student racial composition, proportions of Limited English Proficiency (LEP) students, students eligible for Free/Reduced-Price Lunch (FRL), Direct Certification Students, and Students with Disabilities (SWD).

---

<sup>1</sup>Details on the history of charter schools in general and more specifically state chartered schools, are contained in Georgia Department of Education (2012).

*Table 1: General Characteristics of State Charter Schools*

School Name	Calendar Year Opened	ESP Affiliation	Grades Served	School Model	Attendance Zone
Academy for Classical Education	2019	No	K-12	Classical Education Model	Statewide
Atlanta Heights	2010	National Heritage Academies	K-8	Tiered instruction based on individual learning needs	Atlanta Public Schools
Atlanta SMART Academy	2021	No	5-7	STEAM	Statewide
Atlanta Unbound Academy	2020	No	K; 6	Reading Comprehension and Literacy	Statewide
Baconton Community Charter	2019	No	K-12	Dual-enrollment offerings	Baker, Dougherty, Lee, Mitchell, Worth
Brookhaven Innovation Academy	2016	No	K-8	Compass Learning: cross-curricula, STEM-focused; project-based K-8 coding curriculum; Extended Day/Year	Statewide
Cherokee Charter Academy	2011	Charter Schools USA	K-8	Problem-based learning	Cartersville City, Marietta City, Bartow, Cherokee, Cobb, and Pickens
Cirrus Academy Charter	2016	No	K-8	STEM + Arts	Statewide



School Name	Calendar Year Opened	ESP Affiliation	Grades Served	School Model	Attendance Zone
Coweta Charter Academy	2010	Charter Schools USA	K-8	STEAM, blended learning	Coweta, Meriwether, Spalding
D.E.L.T.A. STEAM Academy	2020	No	K-4	STEAM, elements of project-based learning; extended days and teacher looping	Douglas, Fulton, Cobb, and Atlanta Public Schools
DuBois Integrity Academy	2015	No	K-6	GA Common core standards with STEM and Arts integration	Clayton County
Ethos Classical Charter School	2019	No	K-2; 5	Classical Education Model	Atlanta Public Schools and Fulton County
Fulton Leadership Academy	2010	No	6-12	STEM with focus on aviation and aeronautics - partnership with Civil Air Patrol; Single-gender	Atlanta Public Schools, Clayton, Fulton
Furlow Charter School	2020	No	K-12	Project-based learning; extended day for fine arts and foreign language instructions, teacher looping	Sumter
Genesis Academy for Boys	2017	No	K-10	College preparatory; Extended Day/Week/Year; Single-gender	Statewide

School Name	Calendar Year Opened	ESP Affiliation	Grades Served	School Model	Attendance Zone
Genesis Academy for Girls	2017	No	K-10	College preparatory; Extended Day/Week/Year; Single-gender	Statewide
Georgia Connections Academy	2011	Connections Academy	5-12	Virtual offerings; Online Curriculum	Statewide
Georgia Cyber Academy	2014	K12 Inc.	K-12	Virtual offerings; Online Curriculum	Statewide
Georgia Fugees Academy Charter School	2020	Fugees Family, Inc.	6-12	English language acquisition and foundational skills for refugee and immigrant students	Statewide
Georgia School for Innovation and the Classics	2015	No	K-11	Classical education approach with career pathways for secondary students (Linguistics, Nuclear Tech, Sustainable Ag, Entertainment Tech)	Statewide
International Academy of Smyrna	2017	No	K-5	International Baccalaureate Program, Primary and Middle Years programs	Cobb County School District
International Charter Academy of Georgia	2018	No	K-5	Dual language program, English/Japanese	Statewide
International Charter School of Atlanta	2015	No	K-8	Language immersion emphasis (French, German, Spanish, Mandarin)	Statewide

School Name	Calendar Year Opened	ESP Affiliation	Grades Served	School Model	Attendance Zone
Ivy Preparatory Academy Inc	2011	No	K-8	Curriculum is entirely College Preparatory. Saturday Academy is available to struggling students; Extended Day/Week/Year; Single-gender	DeKalb County and Atlanta Public Schools
Liberty Tech Charter School	2016	No	K-8	Classical/STEM hybrid, House System to learn college and career readiness, physical education daily; Extended Year: 210 days	Statewide
Northwest Classical	2021	Liberty Classical Schools	K-8	Classical Education Model	Statewide
Odyssey School	2004	No	K-8	Multi-age classrooms - students grouped by skill level/Looping: students remain with teacher two years	Coweta County
Pataula Charter Academy	2010	No	K-12	Expeditionary Learning: project-based lectures and curriculum delivery/Looping: students remain with teacher for two years	Baker, Calhoun, Clay, Early, Miller, Randolph, and Terrell
Resurgence Hall	2017	No	K-4	Emphasis on computer science, design-thinking and literacy and use of blended learning; Extended Day/Year	Atlanta Public Schools and Fulton County
SAIL – School for Arts-Infused Learning	2017	No	K-8	Arts-infused learning with robust fine arts and foreign language program, multiple year looping	Statewide

School Name	Calendar Year Opened	ESP Affiliation	Grades Served	School Model	Attendance Zone
Scintilla Charter Academy	2015	No	K-7	Project-based learning with emphasis on service learning	Brooks, Lowndes, Valdosta City
SLAM Academy of Atlanta	2018	SLAM Foundation, Inc.	K-5	Sports-themed, STEM program in elementary grades (K-5), Career-oriented model in secondary grades (6-7)	Atlanta Public Schools
Southwest Georgia STEM Charter	2016	No	PK-9	Interdisciplinary, place-based paired with STEM	Statewide
Spring Creek Charter Academy	2019	No	K-8	Project-based learning	Decatur, Miller, Seminole
Statesboro STEAM Academy	2002	No	6-12	Multi-age classrooms - students grouped by skill level; Year-round	Bulloch County
Utopian Academy for the Arts	2014	No	6-8	Expeditionary Learning Curriculum. Single-gender instructional approach, and classes in the dramatic, media, and culinary arts; Extended Day/Week/Year	Clayton County
Yi Hwang Academy of Language Excellence	2020	No	K-5	Language immersion emphasis (Korean, Mandarin)	Statewide

Sources: Georgia Department of Education (2010), Georgia Department of Education (2011), Georgia Department of Education (2016b), Georgia Department of Education (2016d), individual-level data from GA•AWARDS and state charter school websites.

Table 2: Students Served by State Charter Schools

School Name	Pct. Female	Pct. White	Pct. Black	Pct. Hispanic	Pct. Other Race	Pct. FRL	Pct. Direct Cert	Pct. LEP	Pct. SWD
Academy for Classical Education	51.5	68.6	15.5	3.7	12.2	10.7	6.9	1.4	5.2
Atlanta Heights	51.3	0	92	5.6	2.4	96.9	65.1	5.8	8.5
Atlanta SMART Academy	50	0.9	87.7	6.1	5.3	55.3	47.2	0	13.2
Atlanta Unbound	47.2	0.6	95.5	2.2	1.7	43.8	38.4	0	13.5
Baconton	47	72	15.7	8.7	3.6	51.9	27.2	1.5	11.2
Brookhaven	49.6	17.3	43.4	25.1	14.2	17.1	15.7	11.5	8.4
Cherokee	49	49.6	20.3	22.8	7.3	10.8	15.8	10.1	16.2
Cirrus	51.9	1.4	91.4	2.2	5	0	68	0	4.9
Coweta	48.9	65.3	15	8.9	10.8	24.2	11	3.1	12.6
D.E.L.T.A. STEAM	48.2	0	99.2	0.8	0	100	22.3	0.4	4.4
DuBois	52.7	0.4	93.6	3.1	2.9	0	45.6	3.3	8.3
Ethos Classical	50	1.5	92.4	3.4	2.7	100	51.5	0.3	6.7
Fulton Leadership	0	0	96.6	2.1	1.3	33.8	35.9	0	23.5
Furlow	51.1	57.9	17.6	15.4	9.1	0	29.8	3.3	12.9
Genesis - Boys	0	0.3	90.1	8.4	1.2	89.5	29.3	5.7	10.5
Genesis - Girls	100	1.5	90	7.6	0.9	79.8	32.6	3.6	5.4
GA Connections	52.9	41.7	38.3	9.9	10.1	35.2	22.2	0.9	15.5
GA Cyber	51.4	28.8	50.6	9.8	10.8	35.4	37.4	1.9	16
GA Fugees	39.9	11.9	48.2	1.8	38.1	0	38.1	78.3	1.8
GA Innovation	48.2	78.5	10.3	5.4	5.8	0	15.8	0	8.2
International - Smyrna	54.6	0.6	65.5	28.3	5.6	44.8	28.3	18.8	11.2
International - Georgia	57.1	6.7	16	9.2	68.1	4.9	7.2	38.5	3.7
International - Atlanta	54.8	34.4	22.4	25.4	17.8	1.2	5.9	4.9	6.3
Ivy Prep. – Kirkwood	100	0	92.6	5.9	1.5	100	40.7	0.5	7.4

State Charter Schools Performance Evaluation, 2021/22

<i>School Name</i>	<i>Pct. Female</i>	<i>Pct. White</i>	<i>Pct. Black</i>	<i>Pct. Hispanic</i>	<i>Pct. Other Race</i>	<i>Pct. FRL</i>	<i>Pct. Direct Cert</i>	<i>Pct. LEP</i>	<i>Pct. SWD</i>
Liberty Tech	49.9	61.9	22.8	7.2	8.1	11.5	10.4	0.3	14.6
Northwest Classical	48.4	60.1	19	11.7	9.2	0	7.7	2.8	9.9
Odyssey	51.3	44.1	38.4	10	7.5	37.8	18.1	2.8	10
Pataula	49.2	64.3	27.4	5.2	3.1	52	30.4	0.5	11.9
Resurgence Hall	51.2	1.3	95.6	2.6	0.5	68	32.8	0.5	7.8
SAIL	58.6	62.3	16.3	13.6	7.8	15	9.8	1.5	13.7
Scintilla	49.9	56.7	29.1	5.5	8.7	21.6	18.3	0.7	13.5
SLAM	43.8	0	96.9	3.1	0	95.3	66.3	0	6.3
Southwest GA	49.3	74.9	14.2	7.1	3.8	51.5	49.5	0	13.7
Spring Creek	48.8	66.6	23.6	6	3.8	54.8	29	0.8	9.6
Statesboro STEAM	45.8	58.9	34.5	2.4	4.2	49.4	18.7	0	19.6
Utopian	57.4	0.3	88.5	8	3.2	0	41.7	2.8	14.2
Yi Hwang	49.5	5.1	9.1	7.1	78.7	0	8.2	27.8	3

Note: For the purposes of this table, students who attended more than one school were attributed to the school where they attended the longest period of time during the school year. Other race includes Asian, American Indian, and Multiracial; these are combined into one group because in most instances the cell size is small.

Source: Individual-level student data from the GA•AWARDS system and school-level data on direct certification and school-wide subsidized lunch programs from the Governor’s Office of Student Achievement.

## II. Results – All State Charters

### A. *Value-Added and Student Growth Model Estimates*

There are two primary methods employed by states to evaluate the impact of schools on student achievement: value-added models and student growth percentile models. Each method has advantages and disadvantages relative to the other. The value-added approach compares the actual test score of each student to the score that is predicted for that student based on their prior-year scores and observable characteristics. In contrast, the student growth percentile method compares the current test scores of students with those of other students who had the same or similar history of past test scores. Differences in the observable characteristics are not explicitly taken into account in the student growth percentile method. More technical details of the value-added and student growth percentile estimation are provided in the Appendix. Note that student growth percentiles were estimated for this report using an approach similar to the state. A thorough explanation of the student growth percentile model and how it compares to the value-added model are provided in Georgia Department of Education (2017).

By construction, the average school (weighted by the count of students) at a given grade grouping (elementary, middle or high school) in Georgia has a school effect of zero in the value-added model (controlling for individual and school-level student characteristics). The performance of each school in a given grade grouping is measured relative to this weighted average. Thus, a positive estimated value for an elementary school's effect indicates that students attending that school experience greater growth in achievement than do students with the same observable characteristics at schools serving similar student populations. Negative values do not mean that the achievement of the school's students fell during the year. Instead, a negative school effect indicates the gap between that school's contribution to student achievement and the contribution of the average school serving a similar student population (measured in standard deviation units). For example, a value of -0.10 means that a school's effect on student achievement is 0.10 standard deviations below that of the average of all schools in the state, where each school's contribution is based on their student's performance controlling for both individual-level student characteristics and prior test scores as well as school-level characteristics. In the same way, a value of 0.10 means that a school's effect is 0.10 standard deviations above the average of all schools in the state, where each school is being compared to schools serving observationally similar student bodies. To put this in perspective, reducing class size in elementary grades by seven students is associated with a 0.10 to 0.20 standard deviation increase in student achievement (Whitehurst & Chingos, 2011) and the difference in the effectiveness of a first-year teacher and one with three years of experience is about 0.07 standard deviations (Dee & Wyckoff, 2015).

The value-added effects for schools are statistical estimates and carry some degree of uncertainty. Along with the estimated effects, the value-added model generates a measure of the uncertainty of each school's effect, the estimated standard error. The estimated standard errors can be used to develop confidence intervals around each school's estimated impact on student achievement. With a confidence interval of approximately plus-or-minus two standard errors, one can be 95 percent confident that the true school effect lies in that range. Thus, for example, if a school's estimated effect is 0.50 and the standard error is 0.10, one can be 95 percent confident that the true effect lies in the range of 0.30 to 0.70. This information can then be used to determine how confident we are that a given school's performance is above, below, or equal to the average school. The standard errors and confidence intervals will generally be smaller as

the number of students per school increase. The estimated school effect on achievement will vary with the performance of individual students. In a small school, random events like a student having a poor night's sleep or getting "lucky" in his/her guesses on an exam will have a larger impact on the school's overall effect, creating more uncertainty in the true school effect; whereas in a large school, such random events will tend to cancel out. Thus, for example, the Georgia Cyber Academy, which has the largest enrollment of any state charter school, tends to have the smallest confidence interval.<sup>2</sup>

Student growth percentiles measure where a student is in the distribution of current achievement relative to students with the same prior-year test score. Thus, by definition, a score of 50 for a student indicates that about half of students with the same test score last year did better this year and about half did worse. School-level averages of student growth percentiles are reported below. The statewide school-level mean of student growth percentiles (SGPs) is approximately equal to the statewide student median of 50, which provides a benchmark for comparing scores across schools. Unlike the value-added model, there were no standard errors calculated for the student growth percentiles.<sup>3</sup> Without this information, one cannot quantify the likelihood that two schools with different mean SGPs are, in fact, statistically different.

For both the value-added and student growth models, separate estimates are presented for different grade groupings and for different subjects. In addition, an estimated effect on average performance across all subjects in each grade grouping is produced. Thus, for example, a charter serving grades K-8 receives two value-added scores in Math, one for its impact on Math achievement of students in elementary grades (grades 4 and 5) and another for its impact on students in middle grades (grades 6-8). Additionally, a comparison school score is calculated for both value added and SGPs based on the set of schools in which the charter students would have otherwise attended. The comparison school score represents a weighted average of performance of these alternative schools, weighted by the share of students in each charter who would have attended the alternative public school. Finally, each charter is ranked in terms of their performance in value added and SGPs against all schools in the state (State Percentile) and against their relevant school comparison group.

## *B. Summary of Findings*

A total of 18 figures comparing the school value-added for each charter school to the state-wide average are presented in this section. For both elementary grades and middle grades there are three figures: one for Math, one for English language arts (ELA), and another for the

---

<sup>2</sup> Note that in the 2020/21 report, the absence of 2019/20 test scores due to the COVID-19 pandemic required that value added be calculated over a two-year period (i.e., growth from 2018/19 to 2020/21), referred to here as a "gap-year VAM", instead of adjacent years (i.e., growth from 2019/20 to 2020/21). For more details on the gap-year VAM approach, refer to the 2020-21 report. In this study, VAM is based on the more traditional approach that calculates value-added across adjacent years. For comparison purposes, the gap-year VAM estimates from last year's report are provided under each school's tab, where available.

<sup>3</sup> It is possible to compute standard errors for student growth percentiles, but there is no single accepted methodology for doing so and most state accountability systems that utilize student growth percentiles, including Georgia's, do not report standard errors at this time. For a discussion of standard errors in the student growth model, see Doran, Swanlund and Lemke (2012) and American Institutes for Research (2012). As such, no standard errors were calculated for this report.



cross-subject average of Math and ELA. At the high school level, there are three figures depicting school performance derived from student scores on end-of-course exams in Math and English Language Arts: American Literature and Algebra 1, and the cross-subject average of these subjects.<sup>4</sup>

Amongst the 32 charters serving elementary grades, 20 performed at a level that is not statistically different from the average of schools with similar student populations at the same grade group in Georgia; 8 performed lower than average; 4 performed higher than average. Amongst the 30 charters serving middle school grades, 19 performed at a level that is not statistically different from the average of schools with similar populations; 4 performed below average; and 7 performed above average. For the 11 charters serving high school students, 4 performed statistically similar to the average of schools serving a similar student population; 5 performed below; and 2 performed above. A similar pattern emerges when focusing on subject-specific performance measures.

The comparisons with state averages provide an overall picture of state charter school performance. More relevant are comparisons between individual state charter schools and traditional public schools in which the charter students would have attended in the absence of the charter. Following the 18 figures that combine results for all state charters, Section III presents individual school summaries as well as comparisons to a relevant group of schools in which the students would have attended instead of the charter for both value added and student growth percentiles.

---

<sup>4</sup> Several other end-of-course exams were administered in 2021/22, but were not related to math or ELA, so are excluded to maintain comparability to elementary and middle school results.



Figure 2: Value-added Schools Effects and Mean Student Growth Percentiles for Schools Serving Grades 4 and 5 – English Language Arts [Statewide]

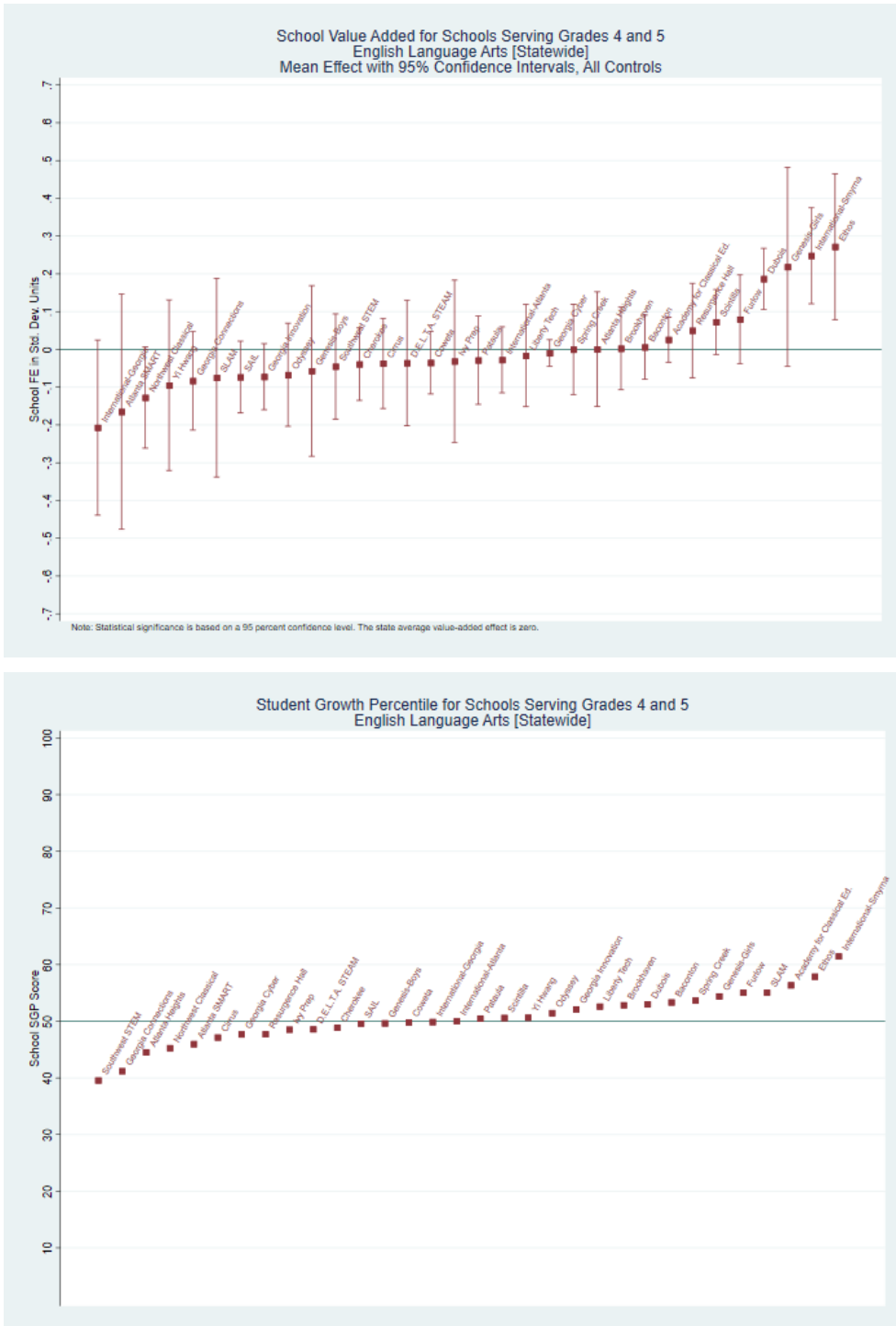


Figure 3: Value-added Schools Effects and Mean Student Growth Percentiles for Schools Serving Grades 4 and 5 – Math [Statewide]

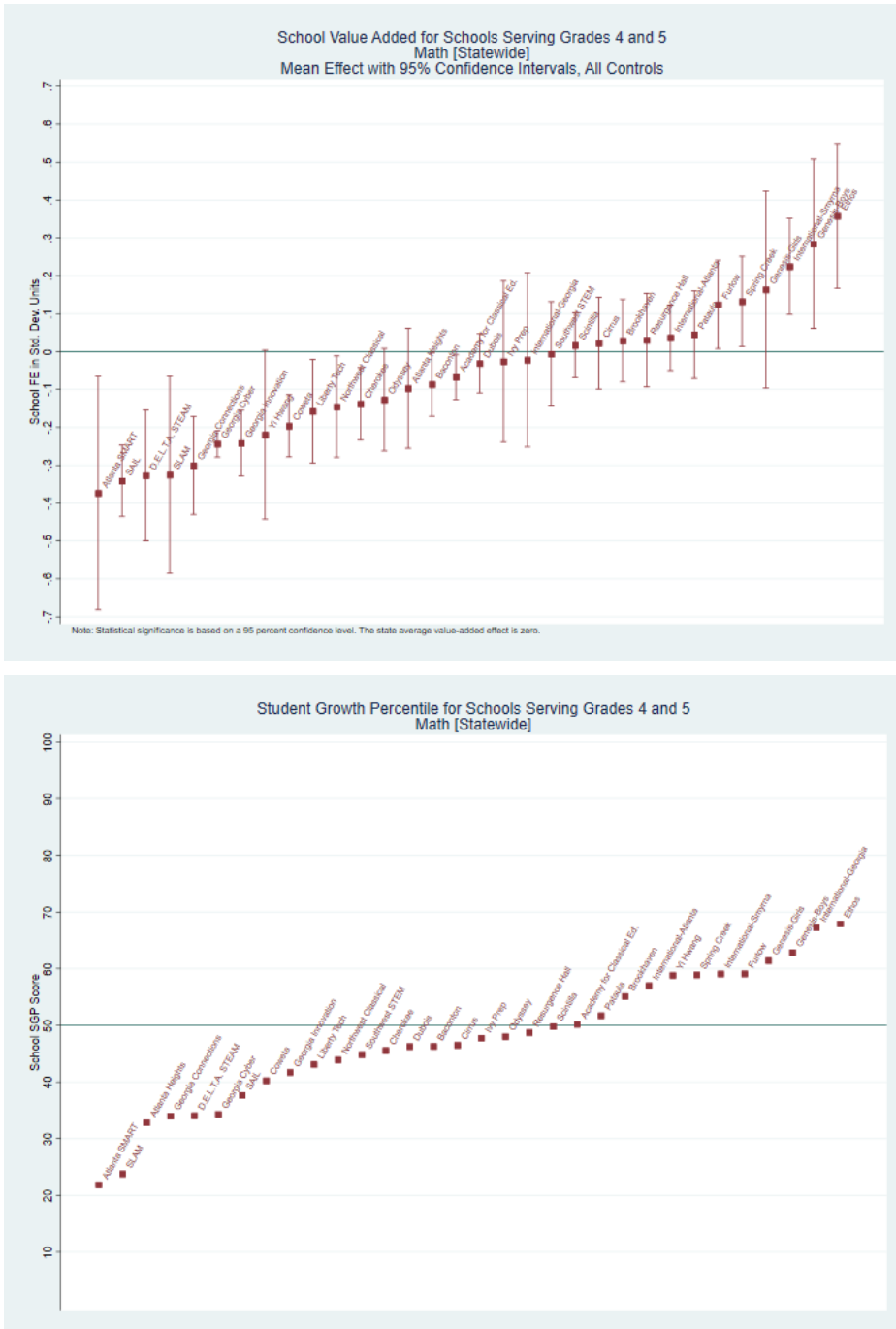


Figure 4: Value-added Schools Effects and Mean Student Growth Percentiles for Schools Serving Grades 6, 7, and 8 – Average Across All Subjects [Statewide]

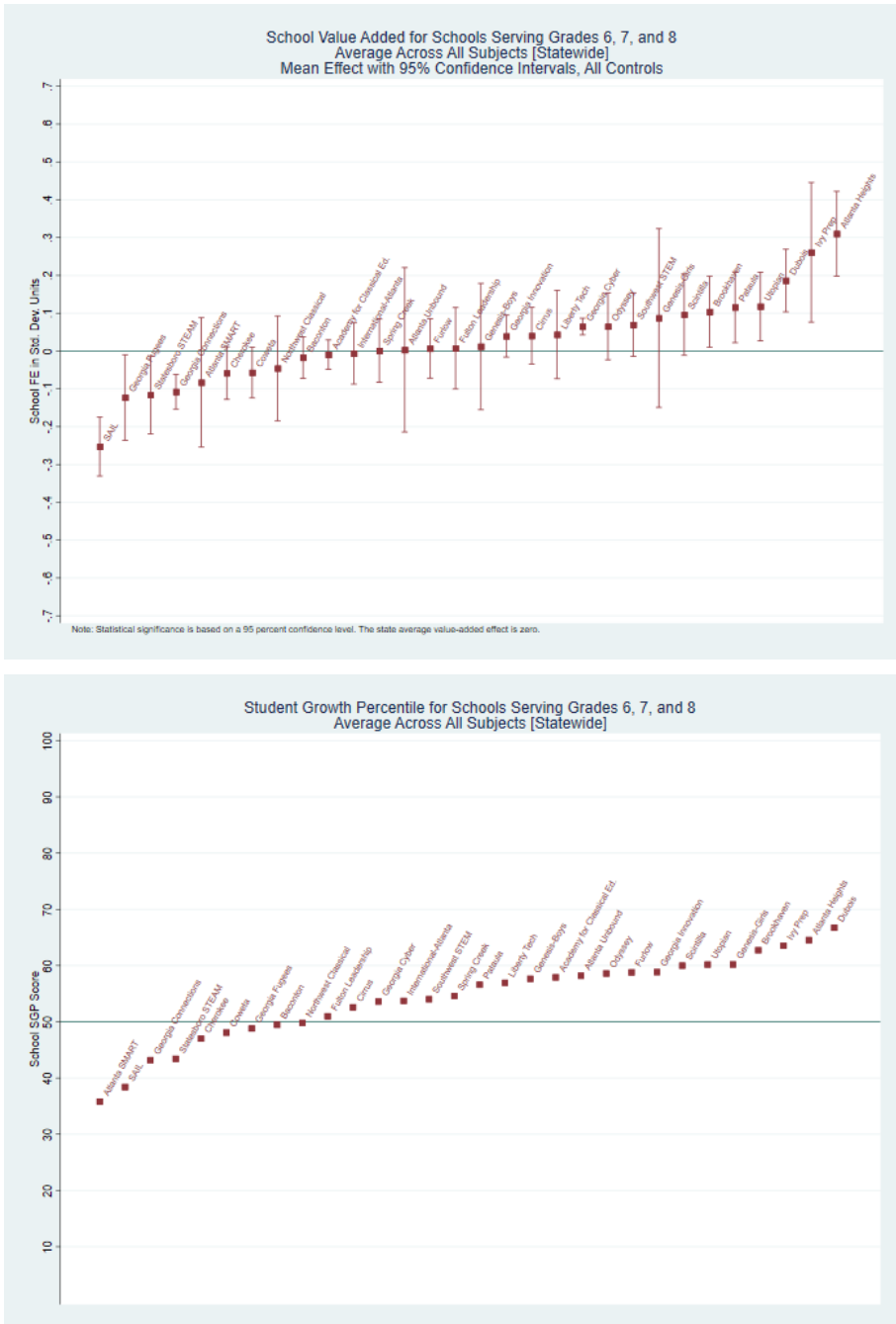




Figure 6: Value-added Schools Effects and Mean Student Growth Percentiles for Schools Serving Grades 6, 7, and 8 – Mathematics [Statewide]

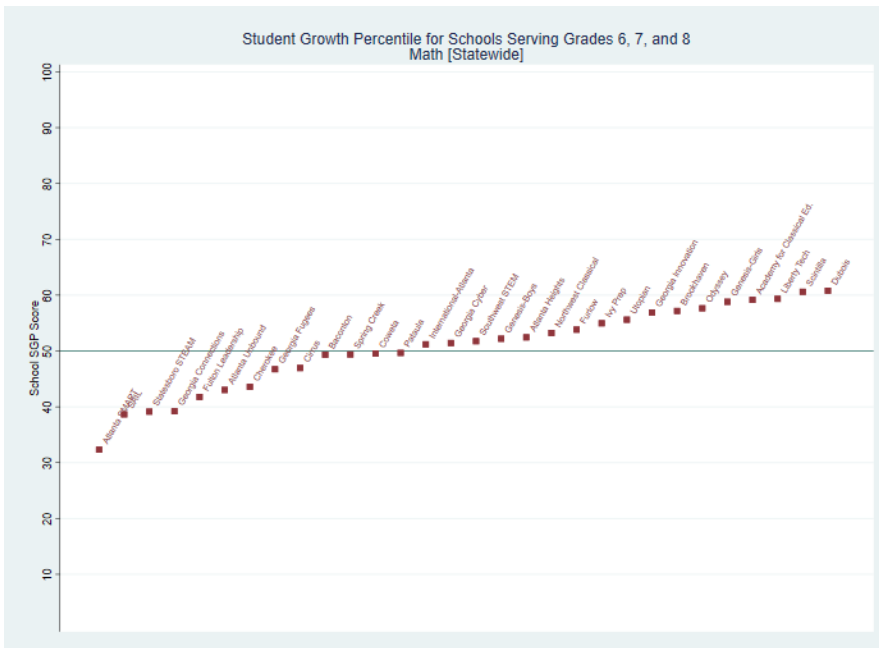
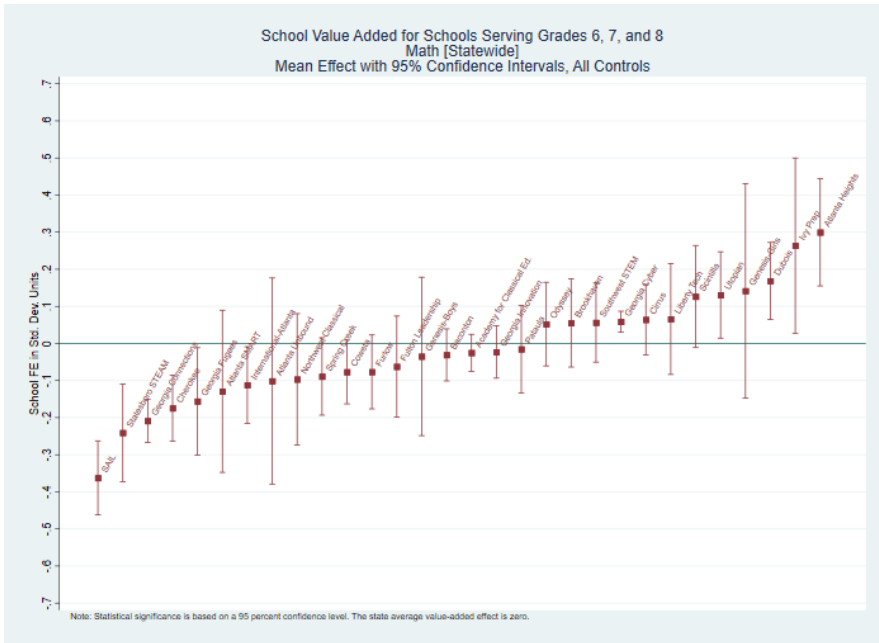


Figure 7: Value-added School Effects and Mean Student Growth Percentiles for Schools Serving Grades 9 through 12– Average Across All Subjects [Statewide]

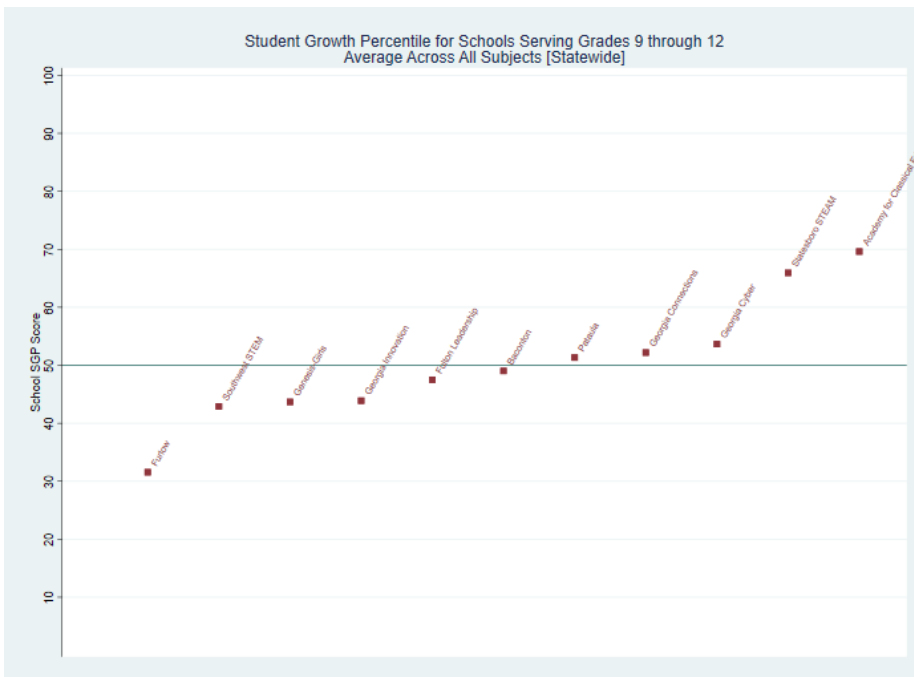
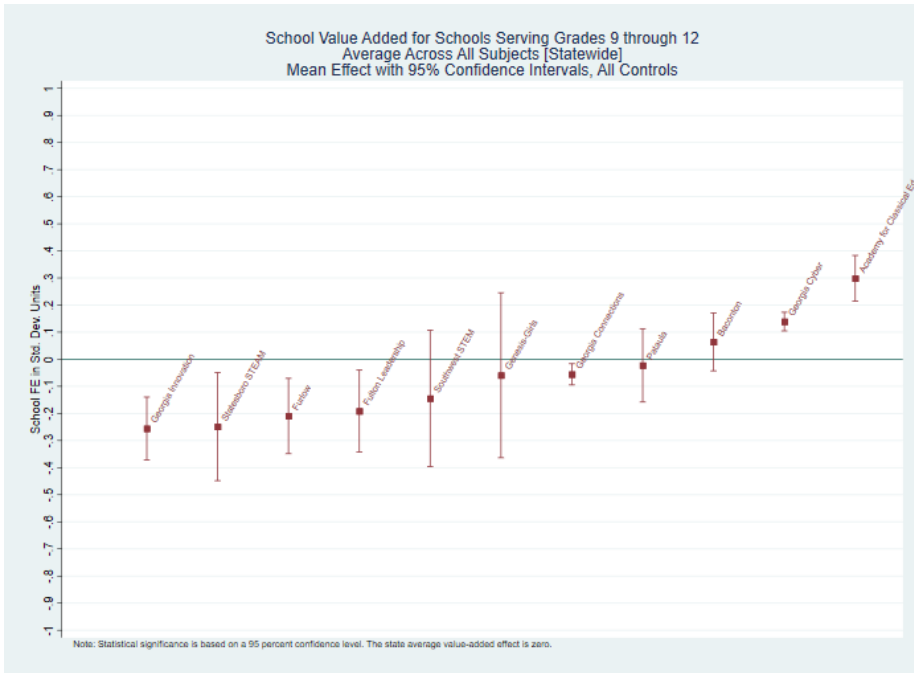




Figure 8: Value-added Schools Effects and Mean Student Growth Percentiles for Schools Serving Grades 9 through 12 – American Literature [Statewide]

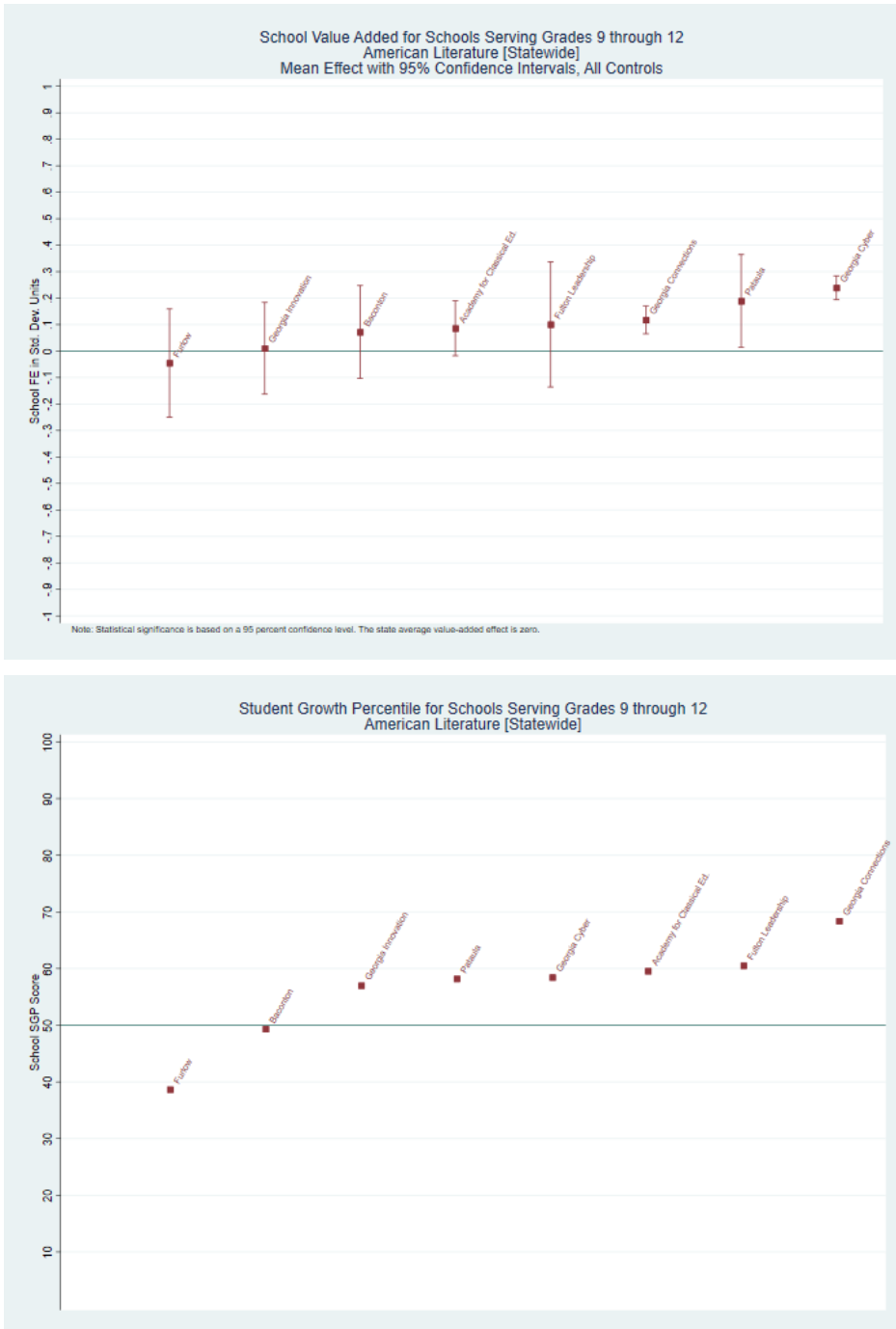
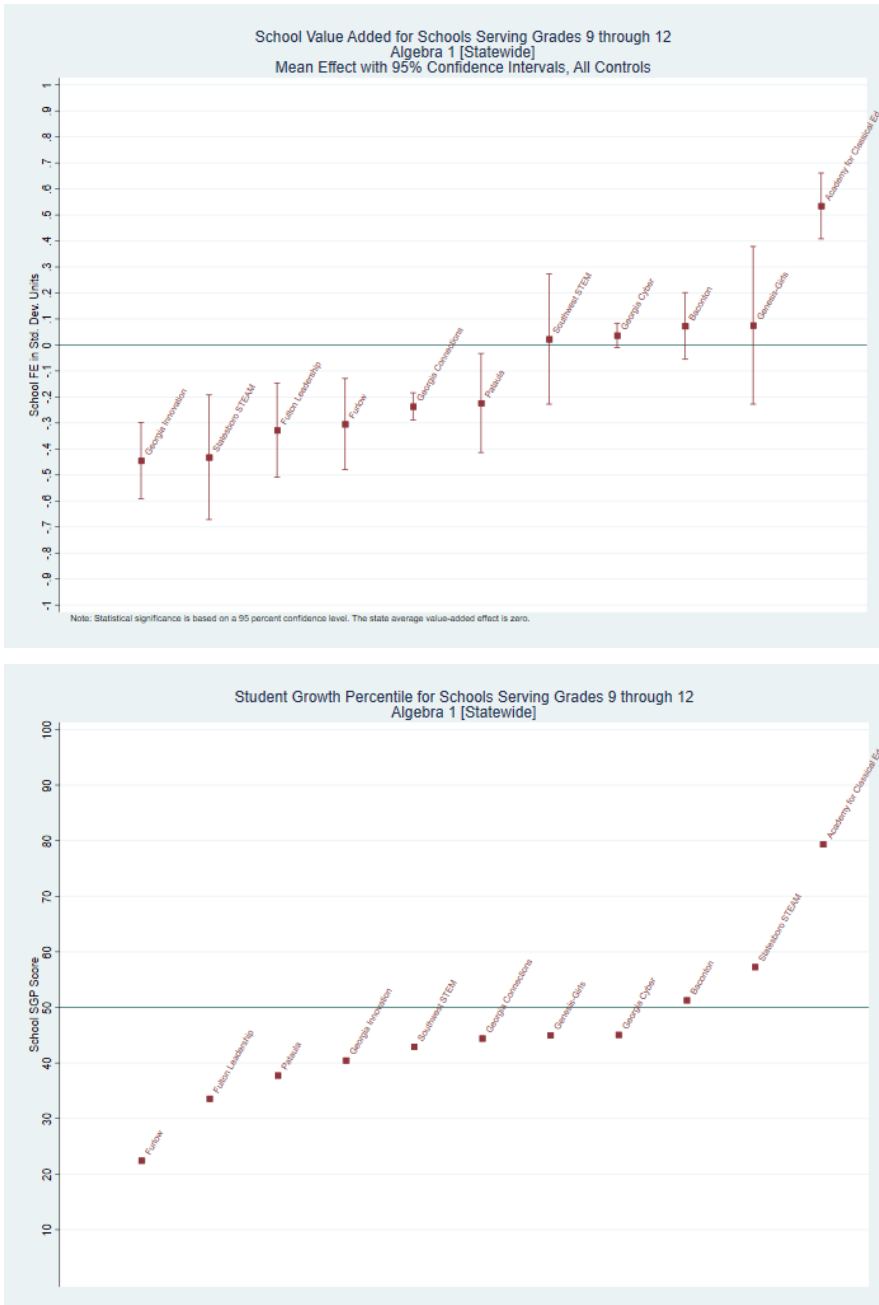


Figure 9: Value-added Schools Effects and Mean Student Growth Percentiles for Schools Serving Grades 9 through 12 – Algebra 1 [Statewide]



### III. Results – Individual School Summaries

The following tables summarize both state and relevant school comparisons of performance for each state charter school. Two estimates of school performance are reported, one based on the value-added model and the other derived from the student growth model. The value-added model includes a multitude of available individual-level student characteristics (plus prior-year test scores) and the school-level percentages of students with disabilities, limited English proficiency students, and students who are directly certified as controls. In contrast, the student growth model indirectly controls for student characteristics by comparing the performance of individual students to other students with similar test-score histories.

For both the value-added and student growth percentile measures, a state percentile and relevant school comparison rank are presented. The state percentile represents the proportion of schools in the state with a lower estimated school effect. Thus, for example, a state percentile of 60 means that 60 percent of schools in the relevant grade group rank below the school. Relevant school comparison ranks represent the position of a school relative to other schools in which the student would have otherwise attended if they did not enroll in the charter. The SCSC determined where every student would have attended in the absence of the state charter school, so for instance, even schools like Georgia Cyber that serve the entire state will still have a set of comparison schools based on the students in attendance at Georgia Cyber. A relevant school-comparison ranking of “5 out of 15” indicates that 4 schools from the relevant school comparison have higher scores and 10 have lower scores. The within-relevant school comparisons show how students would likely fare if a state charter were to close and a student then attended the average-performing school amongst those they would otherwise attend. For both value added and student growth percentiles, a weighted average comparison school score is presented – this score takes the relevant comparison school scores and weights them by the share of students in the charter who would have attended the alternative public schools.

Each school summary report is structured as follows:

- General Characteristics
- Students Served
- Value-Added Results Summary by Grade Level and Subject
- Student Growth Percentile Summary by Grade Level and Subject
- 2021 Gap-Year Value-Added Results for Comparison Purposes

## Academy for Classical Education

### General Characteristics

School Name	Calendar Year Opened	ESP Affiliation	Grades Served	School Model	Attendance Zone
Academy for Classical Education	2019	No	K-12	Classical Education Model	Statewide

### Students Served

School Name	Female	White	Black	Hispanic	Other Race	FRL	Direct Cert	LEP	SWD
Academy for Classical Education	51.5	68.6	15.5	3.7	12.2	10.7	6.9	1.4	5.2

Note. All data are reported percentages (% omitted)

### Value-Added Summary by Grade Level and Subject

Academy for Classical Education’s contribution to an elementary school student's average achievement across ELA and Math is statistically indistinguishable to the state average, but statistically lower relative to its comparison schools. Academy for Classical Education’s contribution to middle school student's average achievement across ELA and Math is statistically indistinguishable to the state average, but statistically lower relative to its comparison schools. Academy for Classical Education’s contribution to high school student's average achievement across American Literature and Algebra I is statistically higher to the state average, and statistically higher relative to its relative comparison schools. It is important to note that averaging achievement scores across subjects masks any variation in school performance between subject areas. As a result, the table below also includes the school’s effect on student achievement in each subject area.

Grade Level and Subject	Value-Added (Controls for Student Demographics and Prior Test Scores)					
	School Effect	State Percentile (higher is better)	Statistically Different from State Average?	School Comparison Rank (lower is better)	School Comparison Weighted Average	Statistically Different from School Comparison Average?
<i>Elementary</i>						
ELA	0.026	60	No	15 out of 36	0.033	No
Math	-0.067	31	Lower	26 out of 36	0.121	Lower
All-Subject Average	-0.023	43	No	24 out of 36	0.085	Lower
<i>Middle</i>						

Value-Added (Controls for Student Demographics and Prior Test Scores)						
Grade Level and Subject	School Effect	State Percentile (higher is better)	Statistically Different from State Average?	School Comparison Rank (lower is better)	School Comparison Weighted Average	Statistically Different from School Comparison Average?
ELA	-0.017	41	No	18 out of 20	0.090	Lower
Math	-0.025	41	No	13 out of 20	0.049	Lower
All-Subject Average	-0.010	45	No	13 out of 20	0.070	Lower
<i>High</i>						
American Literature	0.086	80	No	1 out of 15	-0.083	Higher
Algebra 1	0.535	98	Higher	1 out of 14	-0.127	Higher
All-Subject Average	0.299	98	Higher	1 out of 15	-0.125	Higher

Note. Statistical significance is based on a 95 percent confidence level. The state average value-added effect is zero. The school comparison weighted average represents a weighted average of performance of the schools in the relevant grouping for this school, weighted by the share of students in this charter who would have attended.

### SGP Results Summary by Grade Level and Subject

Student Growth Percentiles (Controls only for Prior Test Scores)								
Grade Level and Subject	School Mean of Individual SGPs	State Percentile (higher is better)	School Comparison Rank (lower is better)	School Comparison Weighted Average SGP	Share of students 1-29	Share of students 30-40	Share of students 41-65	Share of students 66-99
<i>Elementary</i>								
ELA	56.4	85	3 out of 36	51.4	0.24	0.08	0.24	0.44
Math	50.2	53	18 out of 36	55.6	0.27	0.14	0.26	0.34
All-Subject Average	53.0	61	15 out of 36	54.9	0.25	0.13	0.23	0.38
<i>Middle</i>								
ELA	56.3	85	2 out of 20	52.2	0.22	0.10	0.25	0.42
Math	59.2	90	2 out of 20	52.2	0.17	0.09	0.28	0.46
All-Subject Average	58.0	81	2 out of 20	52.3	0.20	0.09	0.27	0.44
<i>High</i>								
American Literature	59.6	90	2 out of 15	52.1	0.19	0.06	0.28	0.47
Algebra 1	79.4	99	1 out of 14	39.6	0.04	0.02	0.07	0.87
All-Subject Average	69.7	99	1 out of 15	44.7	0.13	0.04	0.19	0.64

### 2021 Gap-Year Value Added Estimates

For comparison purposes, estimates from 2021 gap-year value added are presented below.

	2021 Gap-Year Value-Added (Controls for Student Demographics and Prior Test Scores)					
Grade Level and Subject	School Effect	State Percentile (higher is better)	Statistically Different from State Average?	School Comparison Rank (lower is better)	School Comparison Average	Statistically Different from School Comparison Average?
<i>Elementary</i>						
ELA	-0.0042	48	No	14 out of 38	-0.0371	No
Math	-0.1027	33	Lower	24 out of 38	-0.0300	No
All-Subject Average	-0.0579	36	No	24 out of 38	-0.0239	No
<i>Middle</i>						
ELA	0.0803	78	Higher	1 out of 14	-0.0388	Higher
Math	-0.0144	48	No	4 out of 14	-0.0890	Higher
All-Subject Average	0.0509	69	Higher	2 out of 14	-0.0587	Higher
<i>High</i>						
American Literature	0.3078	94	Higher	1 out of 14	-0.2330	Higher
Algebra 1	0.4572	96	Higher	1 out of 13	-0.1913	Higher
All Subject Average	0.3932	97	Higher	1 out of 14	-0.2162	Higher

## Atlanta Heights Charter School

### General Characteristics

School Name	Calendar Year Opened	ESP Affiliation	Grades Served	School Model	Attendance Zone
Atlanta Heights	2010	National Heritage Academies	K-8	Tiered instruction based on individual learning needs	Atlanta Public Schools

### Students Served

School Name	Female	White	Black	Hispanic	Other Race	FRL	Direct Cert	LEP	SWD
Atlanta Heights	51.3	0	92	5.6	2.4	96.9	65.1	5.8	8.5

Note. All data are reported percentages (% omitted)

### Value-Added Results Summary by Grade Level and Subject

Atlanta Heights’s contribution to an elementary school student’s average achievement across ELA and Math is statistically indistinguishable to the state average, but statistically lower relative to its comparison schools. Atlanta Height’s contribution to middle school student’s average achievement across ELA and Math is statistically higher than the state average, but statistically indistinguishable relative to its comparison schools. It is important to note that averaging achievement scores across subjects masks any variation in school performance between subject areas. As a result, the table below also includes the school’s effect on student achievement in each subject area.

Grade Level and Subject	Value-Added (Controls for Student Demographics and Prior Test Scores)					
	School Effect	State Percentile (higher is better)	Statistically Different from State Average?	School Comparison Rank (lower is better)	School Comparison Weighted Average	Statistically Different from School Comparison Average?
<i>Elementary</i>						
ELA	0.001	51	No	29 out of 33	0.120	No
Math	-0.097	23	No	30 out of 33	0.240	Lower
All-Subject Average	-0.076	23	No	32 out of 33	0.172	Lower
<i>Middle</i>						
ELA	0.357	99	Higher	1 out of 13	0.193	Higher
Math	0.300	98	Higher	2 out of 13	0.271	No
All-Subject Average	0.310	99	Higher	1 out of 13	0.208	No

Note. Statistical significance is based on a 95 percent confidence level. The state average value-added effect is zero. The school comparison weighted average represents a weighted average of performance of the schools in the relevant grouping for this school, weighted by the share of students in this charter who would have attended.

### SGP Results Summary by Grade Level and Subject

Grade Level and Subject	Student Growth Percentiles (Controls only for Prior Test Scores)							
	School Mean of Individual SGPs	State Percentile (higher is better)	School Comparison Rank (lower is better)	School Comparison Weighted Average SGP	Share of students 1-29	Share of students 30-40	Share of students 41-65	Share of students 66-99
<i>Elementary</i>								
ELA	44.6	21	28 out of 33	49.3	0.42	0.12	0.19	0.28
Math	32.8	4	31 out of 33	51.3	0.56	0.09	0.14	0.21
All-Subject Average	39.6	10	31 out of 33	55.3	0.47	0.09	0.26	0.19
<i>Middle</i>								
ELA	66.8	99	1 out of 13	49.1	0.14	0.06	0.26	0.54
Math	52.5	68	4 out of 13	49.1	0.26	0.08	0.24	0.42
All-Subject Average	64.6	94	1 out of 13	53.5	0.12	0.08	0.22	0.58

### 2021 Gap-Year Value Added Estimates

For comparison purposes, estimates from 2021 gap-year value added are presented below.

Grade Level and Subject	2021 Gap-Year Value-Added (Controls for Student Demographics and Prior Test Scores)					
	School Effect	State Percentile (higher is better)	Statistically Different from State Average?	School Comparison Rank (lower is better)	School Comparison Average	Statistically Different from School Comparison Average?
<i>Elementary</i>						
ELA	-0.0010	49	No	9 out of 27	-0.0952	No
Math	-0.1129	32	No	11 out of 26	-0.1545	No
All-Subject Average	-0.0814	32	No	12 out of 28	-0.1089	No
<i>Middle</i>						
ELA	-0.0320	38	No	7 out of 15	-0.0518	No
Math	0.0108	56	No	4 out of 15	-0.0838	No
All-Subject Average	-0.0397	38	No	6 out of 15	-0.0578	No

Note. Statistical significance is based on a 95 percent confidence level. The state average value-added effect is zero. The school comparison average represents the simple average of the school effects of all schools in the relevant grouping for this school.



## Atlanta SMART Academy

### General Characteristics

School Name	Calendar Year Opened	ESP Affiliation	Grades Served	School Model	Attendance Zone
Atlanta SMART Academy	2021	No	5-7	STEAM	Statewide

### Students Served

School Name	Female	White	Black	Hispanic	Other Race	FRL	Direct Cert	LEP	SWD
Atlanta SMART Academy	50	0.9	87.7	6.1	5.3	55.3	47.2	0	13.2

Note. All data are reported percentages (% omitted)

### Value-Added Results Summary by Grade Level and Subject

Atlanta SMART’s contribution to an elementary school student’s average achievement across ELA and Math is statistically lower to the state average and statistically lower relative to its comparison schools. Atlanta SMART’s contribution to a middle school student’s average achievement across ELA and Math is statistically similar to the state average, but statistically lower relative to its comparison schools. It is important to note that averaging achievement scores across subjects masks any variation in school performance between subject areas. As a result, the table below also includes the school’s effect on student achievement in each subject area.

Grade Level and Subject	Value-Added (Controls for Student Demographics and Prior Test Scores)					
	School Effect	State Percentile (higher is better)	Statistically Different from State Average?	School Comparison Rank (lower is better)	School Comparison Weighted Average	Statistically Different from School Comparison Average?
<i>Elementary</i>						
ELA	-0.165	6	No	28 out of 28	0.094	No
Math	-0.374	1	Lower	28 out of 28	0.151	Lower
All-Subject Average	-0.281	1	Lower	28 out of 28	0.121	Lower
<i>Middle</i>						
ELA	-0.012	43	No	37 out of 39	0.141	No
Math	-0.129	13	No	39 out of 39	0.175	Lower
All-Subject Average	-0.083	19	No	39 out of 39	0.143	Lower

Note. Statistical significance is based on a 95 percent confidence level. The state average value-added effect is zero. The school comparison weighted average represents a weighted average of performance of the schools in the relevant grouping for this school, weighted by the share of students in this charter who would have attended.

### SGP Results Summary by Grade Level and Subject

Grade Level and Subject	Student Growth Percentiles (Controls only for Prior Test Scores)							
	School Mean of Individual SGPs	State Percentile (higher is better)	School Comparison Rank (lower is better)	School Comparison Weighted Average SGP	Share of students 1-29	Share of students 30-40	Share of students 41-65	Share of students 66-99
<i>Elementary</i>								
ELA	46.0	26	25 out of 28	50.1	0.40	0.00	0.20	0.40
Math	21.9	1	28 out of 28	51.4	0.70	0.20	0.10	0.00
All-Subject Average	28.6	1	28 out of 28	54.7	0.60	0.00	0.30	0.10
<i>Middle</i>								
ELA	41.3	10	39 out of 39	50.0	0.39	0.04	0.30	0.26
Math	32.4	4	38 out of 39	50.0	0.52	0.13	0.17	0.17
All-Subject Average	35.9	5	39 out of 39	53.3	0.52	0.09	0.22	0.17

2021 Gap-Year Value Added Estimates

2021 gap-year value added are not available for Atlanta SMART Academy.

## Atlanta Unbound Academy

### General Characteristics

School Name	Calendar Year Opened	ESP Affiliation	Grades Served	School Model	Attendance Zone
Atlanta Unbound Academy	2020	No	K; 6	Reading Comprehension and Literacy	Statewide

### Students Served

School Name	Female	White	Black	Hispanic	Other Race	FRL	Direct Cert	LEP	SWD
Atlanta Unbound	47.2	0.6	95.5	2.2	1.7	43.8	38.4	0	13.5

Note. All data are reported percentages (% omitted)

### Value-Added Results Summary by Grade Level and Subject

Atlanta Unbound’s contribution to a middle school student’s average achievement across ELA and Math is statistically indistinguishable from the state average and the school comparison group average. It is important to note that averaging achievement scores across subjects masks any variation in school performance between subject areas. As a result, the table below also includes the school’s effect on student achievement in each subject area.

Grade Level and Subject	Value-Added (Controls for Student Demographics and Prior Test Scores)					
	School Effect	State Percentile (higher is better)	Statistically Different from State Average?	School Comparison Rank (lower is better)	School Comparison Weighted Average	Statistically Different from School Comparison Average?
<i>Middle</i>						
ELA	0.093	84	No	14 out of 29	0.118	No
Math	-0.101	20	No	28 out of 29	0.109	No
All-Subject Average	0.003	51	No	20 out of 29	0.095	No

Note. Statistical significance is based on a 95 percent confidence level. The state average value-added effect is zero. The school comparison weighted average represents a weighted average of performance of the schools in the relevant grouping for this school, weighted by the share of students in this charter who would have attended.

### SGP Results Summary by Grade Level and Subject

Grade Level and Subject	Student Growth Percentiles (Controls only for Prior Test Scores)							
	School Mean of Individual SGPs	State Percentile (higher is better)	School Comparison Rank (lower is better)	School Comparison Weighted Average SGP	Share of students 1-29	Share of students 30-40	Share of students 41-65	Share of students 66-99
<i>Middle</i>								
ELA	41.3	10	39 out of 39	50.0	0.39	0.04	0.30	0.26
Math	32.4	4	38 out of 39	50.0	0.52	0.13	0.17	0.17
All-Subject Average	35.9	5	39 out of 39	53.3	0.52	0.09	0.22	0.17

### 2021 Gap-Year Value Added Estimates

2021 gap-year value added are not available for Atlanta Unbound Academy.

## Baconton Community Charter School

### General Characteristics

School Name	Calendar Year Opened	ESP Affiliation	Grades Served	School Model	Attendance Zone
Baconton Community Charter	2019	No	K-12	Dual-enrollment offerings	Baker, Dougherty, Lee, Mitchell, Worth

### Students Served

School Name	Female	White	Black	Hispanic	Other Race	FRL	Direct Cert	LEP	SWD
Baconton Community Charter	47	72	15.7	8.7	3.6	51.9	27.2	1.5	11.2

Note. All data are reported percentages (% omitted)

### Value-Added Results Summary by Grade Level and Subject

Baconton’s contribution to an elementary school student’s average achievement across ELA and Math is statistically indistinguishable from the state average as well as relative to its comparison schools. Baconton’s contribution to a middle school student’s average achievement across ELA and Math is statistically similar from the state average, but is statistically lower relative to its comparison schools. Baconton’s contribution to a high school student’s average achievement across American Literature and Algebra I is statistically indistinguishable from the state average as well as its comparison schools. It is important to note that averaging achievement scores across subjects masks any variation in school performance between subject areas. As a result, the table below also includes the school’s effect on student achievement in each subject area.

Grade Level and Subject	Value-Added (Controls for Student Demographics and Prior Test Scores)					
	School Effect	State Percentile (higher is better)	Statistically Different from State Average?	School Comparison Rank (lower is better)	School Comparison Weighted Average	Statistically Different from School Comparison Average?
<i>Elementary</i>						
ELA	0.006	52	No	4 out of 14	0.001	No
Math	-0.086	27	Lower	10 out of 14	0.027	Lower
All-Subject Average	-0.024	43	No	8 out of 14	0.025	No
<i>Middle</i>						
ELA	-0.009	45	No	6 out of 13	-0.026	No
Math	-0.031	40	No	7 out of 13	0.097	Lower
All-Subject Average	-0.017	43	No	6 out of 13	0.053	Lower

Grade Level and Subject	Value-Added (Controls for Student Demographics and Prior Test Scores)					
	School Effect	State Percentile (higher is better)	Statistically Different from State Average?	School Comparison Rank (lower is better)	School Comparison Weighted Average	Statistically Different from School Comparison Average?
<i>High</i>						
American Literature	0.072	76	No	3 out of 8	0.088	No
Algebra 1	0.073	63	No	3 out of 8	0.253	Lower
All-Subject Average	0.064	69	No	4 out of 9	0.165	No

Note. Statistical significance is based on a 95 percent confidence level. The state average value-added effect is zero. The school comparison weighted average represents a weighted average of performance of the schools in the relevant grouping for this school, weighted by the share of students in this charter who would have attended.

### SGP Results Summary by Grade Level and Subject

Grade Level and Subject	Student Growth Percentiles (Controls only for Prior Test Scores)							
	School Mean of Individual SGPs	State Percentile (higher is better)	School Comparison Rank (lower is better)	School Comparison Weighted Average SGP	Share of students 1-29	Share of students 30-40	Share of students 41-65	Share of students 66-99
<i>Elementary</i>								
ELA	53.4	71	3 out of 14	48.9	0.25	0.09	0.26	0.40
Math	46.3	35	7 out of 14	49.7	0.38	0.10	0.13	0.39
All-Subject Average	49.0	43	7 out of 14	50.0	0.32	0.10	0.22	0.37
<i>Middle</i>								
ELA	50.2	56	4 out of 13	49.4	0.27	0.11	0.30	0.32
Math	49.4	54	3 out of 13	49.4	0.29	0.13	0.28	0.31
All-Subject Average	49.5	47	4 out of 13	53.4	0.27	0.12	0.29	0.32
<i>High</i>								
American Literature	49.4	54	4 out of 8	58.6	0.30	0.11	0.27	0.32
Algebra 1	51.3	60	2 out of 8	42.5	0.17	0.13	0.32	0.38
All-Subject Average	49.1	52	4 out of 9	52.6	0.22	0.12	0.31	0.35

### 2021 Gap-Year Value Added Estimates

For comparison purposes, estimates from 2021 gap-year value added are presented below.

	2021 Gap-Year Value-Added (Controls for Student Demographics and Prior Test Scores)					
Grade Level and Subject	School Effect	State Percentile (higher is better)	Statistically Different from State Average?	School Comparison Rank (lower is better)	School Comparison Average	Statistically Different from School Comparison Average?
<i>Elementary</i>						
ELA	0.0202	56	No	9 out of 14	0.0199	No
Math	-0.1344	29	Lower	12 out of 14	-0.0015	Lower
All-Subject Average	-0.0704	34	No	12 out of 14	0.0106	No
<i>Middle</i>						
ELA	0.0401	65	No	3 out of 11	-0.0292	No
Math	-0.0424	40	No	6 out of 11	-0.0033	No
All-Subject Average	-0.0003	53	No	6 out of 11	-0.0122	No
<i>High</i>						
American Literature	0.2467	90	Higher	1 out of 13	-0.0852	Higher
Algebra 1	-0.1493	28	No	6 out of 12	-0.0945	No
All Subject Average	0.0127	55	No	6 out of 13	-0.0671	No

## Brookhaven Innovation Academy

### General Characteristics

School Name	Calendar Year Opened	ESP Affiliation	Grades Served	School Model	Attendance Zone
Brookhaven Innovation Academy	2016	No	K-8	Compass Learning: cross-curricula, STEM-focused; project-based K-8 coding curriculum; Extended Day/Year	Statewide

### Students Served

School Name	Female	White	Black	Hispanic	Other Race	FRL	Direct Cert	LEP	SWD
Brookhaven Innovation Academy	49.6	17.3	43.4	25.1	14.2	17.1	15.7	11.5	8.4

Note. All data are reported percentages (% omitted)

### Value-Added Results Summary by Grade Level and Subject

Brookhaven Innovation Academy’s contribution to an elementary student’s average achievement across ELA and Math is statistically indistinguishable from the average elementary school in the state and is statistically indistinguishable relative to its comparison schools. Brookhaven Innovation Academy’s contribution to a middle school student’s average achievement across ELA and Math is statistically higher than the state average, but is statistically indistinguishable compared to its comparison. It is important to note that averaging achievement scores across subjects masks any variation in school performance between subject areas. As a result, the table below also includes the school’s effect on student achievement in each subject area.

Grade Level and Subject	Value-Added (Controls for Student Demographics and Prior Test Scores)					
	School Effect	State Percentile (higher is better)	Statistically Different from State Average?	School Comparison Rank (lower is better)	School Comparison Weighted Average	Statistically Different from School Comparison Average?
<i>Elementary</i>						
ELA	0.003	51	No	37 out of 66	0.020	No
Math	0.029	61	No	38 out of 66	0.049	No
All-Subject Average	0.040	66	No	34 out of 66	0.034	No
<i>Middle</i>						
ELA	0.140	93	Higher	7 out of 40	0.045	No
Math	0.055	69	No	17 out of 40	0.048	No
All-Subject Average	0.104	88	Higher	9 out of 40	0.043	No

Note. Statistical significance is based on a 95 percent confidence level. The state average value-added effect is zero. The school comparison weighted average represents a weighted average of performance of the schools in the relevant grouping for this school, weighted by the share of students in this charter who would have attended.



### SGP Results Summary by Grade Level and Subject

Grade Level and Subject	Student Growth Percentiles (Controls only for Prior Test Scores)							
	School Mean of Individual SGPs	State Percentile (higher is better)	School Comparison Rank (lower is better)	School Comparison Weighted Average SGP	Share of students 1-29	Share of students 30-40	Share of students 41-65	Share of students 66-99
<i>Elementary</i>								
ELA	52.9	68	23 out of 66	49.1	0.23	0.13	0.23	0.41
Math	55.1	73	28 out of 66	53.0	0.23	0.11	0.21	0.45
All-Subject Average	55.8	74	27 out of 66	52.8	0.21	0.10	0.23	0.45
<i>Middle</i>								
ELA	62.5	96	1 out of 40	51.1	0.18	0.10	0.19	0.52
Math	57.2	84	5 out of 40	51.1	0.22	0.10	0.24	0.44
All-Subject Average	62.8	92	2 out of 40	53.8	0.18	0.06	0.20	0.56

### 2021 Gap-Year Value Added Estimates

For comparison purposes, estimates from 2021 gap-year value added are presented below.

Grade Level and Subject	2021 Gap-Year Value-Added (Controls for Student Demographics and Prior Test Scores)					
	School Effect	State Percentile (higher is better)	Statistically Different from State Average?	School Comparison Rank (lower is better)	School Comparison Average	Statistically Different from School Comparison Average?
<i>Elementary</i>						
ELA	-0.1059	22	No	72 out of 103	-0.0163	No
Math	-0.1125	32	No	64 out of 102	-0.0725	No
All-Subject Average	-0.0842	31	No	64 out of 103	-0.0458	No
<i>Middle</i>						
ELA	0.1048	83	No	2 out of 41	-0.0693	Higher
Math	-0.0763	31	No	23 out of 41	-0.0956	No
All-Subject Average	0.0310	64	No	3 out of 41	-0.0853	Higher

Note. Statistical significance is based on a 95 percent confidence level. The state average value-added effect is zero. The attendance-zone average represents the simple average of the school effects of all schools in the relevant grouping for this school.

## Cherokee Charter Academy

### General Characteristics

School Name	Calendar Year Opened	ESP Affiliation	Grades Served	School Model	Attendance Zone
Cherokee Charter Academy	2011	Charter Schools USA	K-8	Problem-based learning	Cartersville City, Marietta City, Bartow, Cherokee, Cobb, and Pickens

### Students Served

School Name	Female	White	Black	Hispanic	Other Race	FRL	Direct Cert	LEP	SWD
Cherokee Charter Academy	49	49.6	20.3	22.8	7.3	10.8	15.8	10.1	16.2

Note. All data are reported percentages (% omitted)

### Value-Added Results Summary by Grade Level and Subject

Cherokee Charter Academy’s contribution to an elementary school student’s average achievement across Math and ELA is statistically indistinguishable from the state average, but statistically lower relative to the school comparison group. Cherokee Charter Academy’s contribution to a middle school student’s average achievement across ELA and Math is statistically indistinguishable from the state average and its comparison schools. It is important to note that averaging achievement scores across subjects masks any variation in school performance between subject areas. As a result, the table below also includes the school’s effect on student achievement in each subject area.

Grade Level and Subject	Value-Added (Controls for Student Demographics and Prior Test Scores)					
	School Effect	State Percentile (higher is better)	Statistically Different from State Average?	School Comparison Rank (lower is better)	School Comparison Weighted Average	Statistically Different from School Comparison Average?
<i>Elementary</i>						
ELA	-0.039	35	No	33 out of 48	-0.004	No
Math	-0.138	15	Lower	45 out of 48	0.030	Lower
All-Subject Average	-0.074	24	No	43 out of 48	0.016	Lower
<i>Middle</i>						
ELA	0.025	59	No	6 out of 18	-0.098	Higher
Math	-0.174	6	Lower	16 out of 18	-0.090	No
All-Subject Average	-0.058	27	No	12 out of 18	-0.092	No

Note. Statistical significance is based on a 95 percent confidence level. The state average value-added effect is zero. The school comparison weighted average represents a weighted average of performance of the schools in the relevant grouping for this school, weighted by the share of students in this charter who would have attended.

### SGP Results Summary by Grade Level and Subject

Grade Level and Subject	Student Growth Percentiles (Controls only for Prior Test Scores)							
	School Mean of Individual SGPs	State Percentile (higher is better)	School Comparison Rank (lower is better)	School Comparison Weighted Average SGP	Share of students 1-29	Share of students 30-40	Share of students 41-65	Share of students 66-99
<i>Elementary</i>								
ELA	48.9	42	37 out of 48	50.8	0.37	0.08	0.23	0.32
Math	45.6	31	43 out of 48	52.7	0.35	0.08	0.27	0.30
All-Subject Average	47.4	34	43 out of 48	52.0	0.38	0.08	0.19	0.35
<i>Middle</i>								
ELA	51.1	60	8 out of 18	46.0	0.30	0.08	0.27	0.35
Math	43.6	28	15 out of 18	46.0	0.28	0.18	0.35	0.19
All-Subject Average	47.1	35	12 out of 18	45.1	0.26	0.20	0.29	0.25

### 2021 Gap-Year Value Added Estimates

For comparison purposes, estimates from 2021 gap-year value added are presented below.

Grade Level and Subject	2021 Gap-Year Value-Added (Controls for Student Demographics and Prior Test Scores)					
	School Effect	State Percentile (higher is better)	Statistically Different from State Average?	School Comparison Rank (lower is better)	School Comparison Average	Statistically Different from School Comparison Average?
<i>Elementary</i>						
ELA	-0.2089	8	Lower	49 out of 52	0.0020	Lower
Math	-0.3626	7	Lower	51 out of 52	0.0036	Lower
All-Subject Average	-0.2771	5	Lower	52 out of 52	0.0024	Lower
<i>Middle</i>						
ELA	-0.0534	29	No	14 out of 21	-0.0380	No
Math	0.0575	69	No	3 out of 21	-0.0969	Higher
All-Subject Average	0.0247	62	No	6 out of 21	-0.0632	Higher

Note. Statistical significance is based on a 95 percent confidence level. The state average value-added effect is zero. The attendance-zone average represents the simple average of the school effects of all schools in the relevant grouping for this school.

## Cirrus Academy Charter

### General Characteristics

School Name	Calendar Year Opened	ESP Affiliation	Grades Served	School Model	Attendance Zone
Cirrus Academy Charter	2016	No	K-8	STEM + Arts	Statewide

### Students Served

School Name	Female	White	Black	Hispanic	Other Race	FRL	Direct Cert	LEP	SWD
Cirrus Academy Charter	51.9	1.4	91.4	2.2	5	0	68	0	4.9

Note. All data are reported percentages (% omitted)

### Value-Added Results Summary by Grade Level and Subject

Cirrus Academy Charter’s contribution to an elementary and middle school student’s average achievement across ELA and Math is not statistically different than the average elementary and middle school in the state, nor is it statistically different from other schools in its comparison group. It is important to note that averaging achievement scores across subjects masks any variation in school performance between subject areas. As a result, the table below also includes the school’s effect on student achievement in each subject area.

Grade Level and Subject	Value-Added (Controls for Student Demographics and Prior Test Scores)					
	School Effect	State Percentile (higher is better)	Statistically Different from State Average?	School Comparison Rank (lower is better)	School Comparison Weighted Average	Statistically Different from School Comparison Average?
<i>Elementary</i>						
ELA	-0.037	35	No	16 out of 22	0.007	No
Math	0.022	58	No	13 out of 22	0.040	No
All-Subject Average	0.026	60	No	13 out of 22	0.029	No
<i>Middle</i>						
ELA	-0.015	42	No	11 out of 12	0.062	No
Math	0.064	72	No	5 out of 12	0.061	No
All-Subject Average	0.040	66	No	6 out of 12	0.062	No

Note. Statistical significance is based on a 95 percent confidence level. The state average value-added effect is zero. The school comparison weighted average represents a weighted average of performance of the schools in the relevant grouping for this school, weighted by the share of students in this charter who would have attended.

### SGP Results Summary by Grade Level and Subject

Grade Level and Subject	Student Growth Percentiles (Controls only for Prior Test Scores)							
	School Mean of Individual SGPs	State Percentile (higher is better)	School Comparison Rank (lower is better)	School Comparison Weighted Average SGP	Share of students 1-29	Share of students 30-40	Share of students 41-65	Share of students 66-99
<i>Elementary</i>								
ELA	47.2	31	13 out of 22	46.8	0.29	0.07	0.36	0.28
Math	46.5	36	11 out of 22	44.9	0.37	0.06	0.26	0.31
All-Subject Average	53.1	62	10 out of 22	48.3	0.24	0.09	0.33	0.34
<i>Middle</i>								
ELA	48.4	42	9 out of 12	48.9	0.31	0.13	0.24	0.33
Math	47.0	41	5 out of 12	48.9	0.40	0.10	0.16	0.34
All-Subject Average	52.6	61	3 out of 12	49.4	0.29	0.09	0.21	0.41

### 2021 Gap-Year Value Added Estimates

For comparison purposes, estimates from 2021 gap-year value added are presented below.

Grade Level and Subject	2021 Gap-Year Value-Added (Controls for Student Demographics and Prior Test Scores)					
	School Effect	State Percentile (higher is better)	Statistically Different from State Average?	School Comparison Rank (lower is better)	School Comparison Average	Statistically Different from School Comparison Average?
<i>Elementary</i>						
ELA	-0.1242	18	No	23 out of 25	0.0215	No
Math	-0.1517	27	No	19 out of 25	-0.0097	No
All-Subject Average	-0.1108	25	No	21 out of 25	0.0150	No
<i>Middle</i>						
ELA	-0.0246	41	No	6 out of 11	-0.0325	No
Math	0.0052	55	No	2 out of 11	-0.0878	No
All-Subject Average	0.0241	62	No	3 out of 11	-0.0537	No

*Note.* Statistical significance is based on a 95 percent confidence level. The state average value-added effect is zero. The district average represents the simple average of the school effects of all schools in the relevant district or set of districts. Schools with a statewide attendance zone are compared to the state average and, thus, have no comparison district.

## Coweta Charter Academy

### General Characteristics

School Name	Calendar Year Opened	ESP Affiliation	Grades Served	School Model	Attendance Zone
Coweta Charter Academy	2010	Charter Schools USA	K-8	STEAM, blended learning	Coweta, Meriwether, Spalding

### Students Served

School Name	Female	White	Black	Hispanic	Other Race	FRL	Direct Cert	LEP	SWD
Coweta Charter Academy	48.9	65.3	15	8.9	10.8	24.2	11	3.1	12.6

Note. All data are reported percentages (% omitted)

### Value-Added Results Summary by Grade Level and Subject

Coweta Charter Academy’s contribution to an elementary student’s average achievement across ELA and Math is lower than the average elementary school in the state and lower relative to its comparison schools. Coweta’s contribution to a middle school student’s average achievement across ELA and Math is statistically indistinguishable compared to the state average and relative to its comparison schools. It is important to note that averaging achievement scores across subjects masks any variation in school performance between subject areas. As a result, the table below also includes the school’s effect on student achievement in each subject area.

Grade Level and Subject	Value-Added (Controls for Student Demographics and Prior Test Scores)					
	School Effect	State Percentile (higher is better)	Statistically Different from State Average?	School Comparison Rank (lower is better)	School Comparison Weighted Average	Statistically Different from School Comparison Average?
<i>Elementary</i>						
ELA	-0.035	36	No	20 out of 29	-0.032	No
Math	-0.196	8	Lower	27 out of 29	-0.065	Lower
All-Subject Average	-0.112	14	Lower	27 out of 29	-0.039	Lower
<i>Middle</i>						
ELA	-0.036	35	No	12 out of 16	-0.046	No
Math	-0.077	28	No	12 out of 16	-0.017	No
All-Subject Average	-0.057	27	No	13 out of 16	-0.016	No

Note. Statistical significance is based on a 95 percent confidence level. The state average value-added effect is zero. The school comparison weighted average represents a weighted average of performance of the schools in the relevant grouping for this school, weighted by the share of students in this charter who would have attended.

### SGP Results Summary by Grade Level and Subject

Grade Level and Subject	Student Growth Percentiles (Controls only for Prior Test Scores)							
	School Mean of Individual SGPs	State Percentile (higher is better)	School Comparison Rank (lower is better)	School Comparison Weighted Average SGP	Share of students 1-29	Share of students 30-40	Share of students 41-65	Share of students 66-99
<i>Elementary</i>								
ELA	49.8	48	16 out of 29	49.5	0.29	0.10	0.27	0.34
Math	40.3	15	26 out of 29	46.6	0.41	0.13	0.24	0.21
All-Subject Average	41.9	16	26 out of 29	48.1	0.37	0.18	0.25	0.21
<i>Middle</i>								
ELA	49.6	52	8 out of 16	48.2	0.30	0.09	0.29	0.32
Math	49.6	55	8 out of 16	48.2	0.28	0.11	0.31	0.30
All-Subject Average	48.1	40	8 out of 16	49.6	0.31	0.11	0.28	0.30

### 2021 Gap-Year Value Added Estimates

For comparison purposes, estimates from 2021 gap-year value added are presented below.

Grade Level and Subject	2021 Gap-Year Value-Added (Controls for Student Demographics and Prior Test Scores)					
	School Effect	State Percentile (higher is better)	Statistically Different from State Average?	School Comparison Rank (lower is better)	School Comparison Average	Statistically Different from School Comparison Average?
<i>Elementary</i>						
ELA	-0.0540	34	No	16 out of 31	-0.0499	No
Math	0.1133	68	No	7 out of 31	-0.1069	Higher
All-Subject Average	0.0133	52	No	9 out of 31	-0.0757	No
<i>Middle</i>						
ELA	0.0373	65	No	3 out of 14	-0.0599	Higher
Math	-0.1502	16	Lower	9 out of 14	-0.0834	No
All-Subject Average	-0.0519	32	No	6 out of 14	-0.0652	No

Note. Statistical significance is based on a 95 percent confidence level. The state average value-added effect is zero. The attendance-zone average represents the simple average of the school effects of all schools in the relevant grouping for this school.

## D.E.L.T.A. STEAM Academy

### General Characteristics

School Name	Calendar Year Opened	ESP Affiliation	Grades Served	School Model	Attendance Zone
D.E.L.T.A. STEAM Academy	2020	No	K; 3	STEAM, elements of project-based learning; extended days and teacher looping	Douglas, Fulton, Cobb, and Atlanta Public Schools

### Students Served

School Name	Female	White	Black	Hispanic	Other Race	FRL	Direct Cert	LEP	SWD
D.E.L.T.A. STEAM	48.2	0	99.2	0.8	0	100	22.3	0.4	4.4

Note. All data are reported percentages (% omitted)

### Value-Added Results Summary by Grade Level and Subject

D.E.L.T.A. STEAM’s contribution to an elementary student’s average achievement across ELA and Math is lower than the average elementary school in the state and lower than the school comparison average. It is important to note that averaging achievement scores across subjects masks any variation in school performance between subject areas. As a result, the table below also includes the school’s effect on student achievement in each subject area.

Grade Level and Subject	Value-Added (Controls for Student Demographics and Prior Test Scores)					
	School Effect	State Percentile (higher is better)	Statistically Different from State Average?	School Comparison Rank (lower is better)	School Comparison Weighted Average	Statistically Different from School Comparison Average?
<i>Elementary</i>						
ELA	-0.036	36	No	33 out of 35	0.085	No
Math	-0.327	2	Lower	35 out of 35	0.061	Lower
All-Subject Average	-0.173	5	Lower	35 out of 35	0.075	Lower

Note. Statistical significance is based on a 95 percent confidence level. The state average value-added effect is zero. The school comparison weighted average represents a weighted average of performance of the schools in the relevant grouping for this school, weighted by the share of students in this charter who would have attended.



### SGP Results Summary by Grade Level and Subject

Grade Level and Subject	Student Growth Percentiles (Controls only for Prior Test Scores)							
	School Mean of Individual SGPs	State Percentile (higher is better)	School Comparison Rank (lower is better)	School Comparison Weighted Average SGP	Share of students 1-29	Share of students 30-40	Share of students 41-65	Share of students 66-99
<i>Elementary</i>								
ELA	48.6	40	28 out of 35	52.9	0.286	0.029	0.429	0.257
Math	34.1	5	34 out of 35	52.3	0.455	0.061	0.424	0.061
All-Subject Average	36.9	5	35 out of 35	54.8	0.514	0.057	0.229	0.200

### 2021 Gap-Year Value Added Estimates

2021 gap-year value added estimates are not available for D.E.L.T.A. STEAM Academy.

## DuBois Integrity Academy

### General Characteristics

School Name	Calendar Year Opened	ESP Affiliation	Grades Served	School Model	Attendance Zone
DuBois Integrity Academy	2015	No	K-6	GA Common core standards with STEM and Arts Integration	Clayton County

### Students Served

School Name	Female	White	Black	Hispanic	Other Race	FRL	Direct Cert	LEP	SWD
DuBois Integrity Academy	52.7	0.4	93.6	3.1	2.9	0	45.6	3.3	8.3

Note. All data are reported percentages (% omitted)

### Value-Added Results Summary by Grade Level and Subject

DuBois Integrity Academy’s contribution to an elementary student’s average achievement across ELA and Math is statistically higher than the state average, but statistically indistinguishable relative to its comparison schools. DuBois Integrity Academy’s contribution to a middle school student’s average achievement across ELA and Math is statistically higher than the school in the state and in its comparison group. It is important to note that averaging achievement scores across subjects masks any variation in school performance between subject areas. As a result, the table below also includes the school’s effect on student achievement in each subject area.

Grade Level and Subject	Value-Added (Controls for Student Demographics and Prior Test Scores)					
	School Effect	State Percentile (higher is better)	Statistically Different from State Average?	School Comparison Rank (lower is better)	School Comparison Weighted Average	Statistically Different from School Comparison Average?
<i>Elementary</i>						
ELA	0.187	95	Higher	8 out of 47	-0.018	Higher
Math	-0.031	42	No	34 out of 47	0.057	Lower
All-Subject Average	0.093	82	Higher	16 out of 47	0.028	No
<i>Middle</i>						
ELA	0.182	97	Higher	2 out of 18	0.020	Higher
Math	0.168	93	Higher	2 out of 18	0.020	Higher
All-Subject Average	0.186	97	Higher	1 out of 18	0.023	Higher

Note. Statistical significance is based on a 95 percent confidence level. The state average value-added effect is zero. The school comparison weighted average represents a weighted average of performance of the schools in the relevant grouping for this school, weighted by the share of students in this charter who would have attended.

### SGP Results Summary by Grade Level and Subject

	Student Growth Percentiles (Controls only for Prior Test Scores)							
Grade Level and Subject	School Mean of Individual SGPs	State Percentile (higher is better)	School Comparison Rank (lower is better)	School Comparison Weighted Average SGP	Share of students 1-29	Share of students 30-40	Share of students 41-65	Share of students 66-99
<i>Elementary</i>								
ELA	53.0	69	13 out of 47	47.1	0.31	0.05	0.23	0.41
Math	46.3	35	34 out of 47	50.2	0.36	0.10	0.23	0.31
All-Subject Average	56.5	76	16 out of 47	51.6	0.17	0.15	0.28	0.40
<i>Middle</i>								
ELA	59.0	91	1 out of 18	50.4	0.18	0.09	0.28	0.45
Math	60.8	92	1 out of 18	50.4	0.19	0.06	0.24	0.51
All-Subject Average	66.8	96	1 out of 18	52.2	0.09	0.10	0.25	0.57

### 2021 Gap-Year Value Added Estimates

For comparison purposes, estimates from 2021 gap-year value added are presented below.

	2021 Gap-Year Value-Added (Controls for Student Demographics and Prior Test Scores)					
Grade Level and Subject	School Effect	State Percentile (higher is better)	Statistically Different from State Average?	School Comparison Rank (lower is better)	School Comparison Average	Statistically Different from School Comparison Average?
<i>Elementary</i>						
ELA	-0.1018	23	No	24 out of 41	-0.0584	No
Math	-0.4920	2	Lower	40 out of 41	-0.1945	Lower
All-Subject Average	-0.2955	4	Lower	34 out of 41	-0.1262	Lower

Note. Statistical significance is based on a 95 percent confidence level. The state average value-added effect is zero. The attendance-zone average represents the simple average of the school effects of all schools in the relevant grouping for this school.

## Ethos Classical Charter School

### General Characteristics

School Name	Calendar Year Opened	ESP Affiliation	Grades Served	School Model	Attendance Zone
Ethos Classical Charter School	2019	No	K-1; 4	Classical Education Model	Atlanta Public Schools and Fulton County

### Students Served

School Name	Female	White	Black	Hispanic	Other Race	FRL	Direct Cert	LEP	SWD
Ethos Classical	50	1.5	92.4	3.4	2.7	100	51.5	0.3	6.7

Note. All data are reported percentages (% omitted)

### Value-Added Results Summary by Grade Level and Subject

Ethos Classical’s contribution to an elementary student’s average achievement across ELA and Math is higher than the state average and higher compared to its comparison schools. It is important to note that averaging achievement scores across subjects masks any variation in school performance between subject areas. As a result, the table below also includes the school’s effect on student achievement in each subject area.

Grade Level and Subject	Value-Added (Controls for Student Demographics and Prior Test Scores)					
	School Effect	State Percentile (higher is better)	Statistically Different from State Average?	School Comparison Rank (lower is better)	School Comparison Weighted Average	Statistically Different from School Comparison Average?
<i>Elementary</i>						
ELA	0.272	99	Higher	1 out of 21	0.129	No
Math	0.358	98	Higher	5 out of 21	0.195	No
All-Subject Average	0.312	99	Higher	1 out of 21	0.137	Higher

Note. Statistical significance is based on a 95 percent confidence level. The state average value-added effect is zero. The school comparison weighted average represents a weighted average of performance of the schools in the relevant grouping for this school, weighted by the share of students in this charter who would have attended.

### SGP Results Summary by Grade Level and Subject

Grade Level and Subject	Student Growth Percentiles (Controls only for Prior Test Scores)							
	School Mean of Individual SGPs	State Percentile (higher is better)	School Comparison Rank (lower is better)	School Comparison Weighted Average SGP	Share of students 1-29	Share of students 30-40	Share of students 41-65	Share of students 66-99
<i>Elementary</i>								
ELA	57.9	89	3 out of 21	51.4	0.21	0.04	0.29	0.46
Math	68.0	97	2 out of 21	51.6	0.04	0.23	0.15	0.58
All-Subject Average	66.0	96	2 out of 21	55.5	0.13	0.13	0.17	0.58

### 2021 Gap-Year Value Added Estimates

2021 gap-year value added not available for Ethos Classical Charter School.

## Fulton Leadership Academy

### General Characteristics

School Name	Calendar Year Opened	ESP Affiliation	Grades Served	School Model	Attendance Zone
Fulton Leadership Academy	2010	No	6-12	STEM with focus on aviation and aeronautics - partnership with Civil Air Patrol; Single-gender	Atlanta Public Schools, Clayton, Fulton

### Students Served

School Name	Female	White	Black	Hispanic	Other Race	FRL	Direct Cert	LEP	SWD
Fulton Leadership	0	0	96.6	2.1	1.3	33.8	35.9	0	23.5

Note. All data are reported percentages (% omitted)

### Value-Added Results Summary by Grade Level and Subject

Fulton Leadership Academy’s contribution to a middle school student’s cross-subject average achievement is indistinguishable than that of the average middle school in the state and comparison school group. Its contribution to a high school student’s cross-subject average achievement is lower than that of the state average and comparison school group. It is important to note that averaging achievement scores across subjects masks any variation in school performance between subject areas. As a result, the table below also includes the school’s effect on student achievement in each subject area.

Grade Level and Subject	Value-Added (Controls for Student Demographics and Prior Test Scores)					
	School Effect	State Percentile (higher is better)	Statistically Different from State Average?	School Comparison Rank (lower is better)	School Comparison Weighted Average	Statistically Different from School Comparison Average?
<i>Middle</i>						
ELA	0.061	74	No	13 out of 18	0.143	No
Math	-0.062	32	No	16 out of 18	0.103	Lower
All-Subject Average	0.007	53	No	13 out of 18	0.099	No
<i>High</i>						
American Literature	0.101	83	No	6 out of 19	0.065	No
Algebra 1	-0.328	8	Lower	19 out of 19	0.044	Lower
All-Subject Average	-0.191	8	Lower	18 out of 19	0.047	Lower

Note. Statistical significance is based on a 95 percent confidence level. The state average value-added effect is zero. The school comparison weighted average represents a weighted average of performance of the schools in the relevant grouping for this school, weighted by the share of students in this charter who would have attended.

### SGP Results Summary by Grade Level and Subject

Grade Level and Subject	Student Growth Percentiles (Controls only for Prior Test Scores)							
	School Mean of Individual SGPs	State Percentile (higher is better)	School Comparison Rank (lower is better)	School Comparison Weighted Average SGP	Share of students 1-29	Share of students 30-40	Share of students 41-65	Share of students 66-99
<i>Middle</i>								
ELA	52.1	65	7 out of 18	50.4	0.27	0.13	0.23	0.37
Math	41.8	19	15 out of 18	50.4	0.42	0.03	0.27	0.27
All-Subject Average	51.0	54	8 out of 18	51.1	0.26	0.13	0.21	0.40
<i>High</i>								
American Literature	60.5	92	2 out of 19	48.1	0.30	0.10	0.15	0.45
Algebra 1	33.6	9	18 out of 19	41.7	0.57	0.05	0.29	0.10
All-Subject Average	47.6	45	4 out of 19	44.0	0.47	0.08	0.25	0.20

### 2021 Gap-Year Value Added Estimates

For comparison purposes, estimates from 2021 gap-year value added are presented below.

Grade Level and Subject	2021 Gap-Year Value-Added (Controls for Student Demographics and Prior Test Scores)					
	School Effect	State Percentile (higher is better)	Statistically Different from State Average?	School Comparison Rank (lower is better)	School Comparison Average	Statistically Different from School Comparison Average?
<i>Middle</i>						
ELA	-0.0373	36	No	10 out of 23	-0.0493	No
Math	-0.1568	15	Lower	19 out of 23	-0.0466	No
All-Subject Average	-0.0409	37	No	15 out of 23	-0.0296	No
<i>High</i>						
American Literature						
Algebra 1	-0.3899	5	Lower	17 out of 17	-0.0512	Lower
All Subject Average	-0.3891	4	Lower	18 out of 18	-0.0608	Lower

Note. Statistical significance is based on a 95 percent confidence level. The state average value-added effect is zero. The attendance-zone average represents the simple average of the school effects of all schools in the relevant grouping for this school.

## Furlow Charter School

### General Characteristics

School Name	Calendar Year Opened	ESP Affiliation	Grades Served	School Model	Attendance Zone
Furlow Charter School	2020	No	K-12	Project-based learning; extended day for fine arts and foreign language instructions, teacher looping	Sumter

### Students Served

School Name	Female	White	Black	Hispanic	Other Race	FRL	Direct Cert	LEP	SWD
Furlow	51.1	57.9	17.6	15.4	9.1	0	29.8	3.3	12.9

Note. All data are reported percentages (% omitted)

### Value-Added Results Summary by Grade Level and Subject

Furlow Charter School’s contribution to an elementary school student is higher than the state average but indistinguishable from the school comparison average. For middle school students, it is indistinguishable from the state average but lower than the school comparison average. For high school students, it is lower compared to both the state average and school comparison average. It is important to note that averaging achievement scores across subjects masks any variation in school performance between subject areas. As a result, the table below also includes the school’s effect on student achievement in each subject area.

Grade Level and Subject	Value-Added (Controls for Student Demographics and Prior Test Scores)					
	School Effect	State Percentile (higher is better)	Statistically Different from State Average?	School Comparison Rank (lower is better)	School Comparison Weighted Average	Statistically Different from School Comparison Average?
<i>Elementary</i>						
ELA	0.080	78	No	2 out of 2	0.085	No
Math	0.124	83	Higher	1 out of 2	0.007	Higher
All-Subject Average	0.123	87	Higher	1 out of 2	0.059	No
<i>Middle</i>						
ELA	0.009	53	No	4 out of 5	0.125	Lower
Math	-0.077	28	No	4 out of 5	0.188	Lower
All-Subject Average	0.007	53	No	3 out of 5	0.167	Lower



Value-Added (Controls for Student Demographics and Prior Test Scores)						
Grade Level and Subject	School Effect	State Percentile (higher is better)	Statistically Different from State Average?	School Comparison Rank (lower is better)	School Comparison Weighted Average	Statistically Different from School Comparison Average?
<i>High</i>						
American Literature	-0.045	31	No	2 out of 2	0.019	No
Algebra 1	-0.304	10	Lower	1 out of 1	0.000	Lower
All-Subject Average	-0.209	6	Lower	2 out of 2	0.049	Lower

Note. Statistical significance is based on a 95 percent confidence level. The state average value-added effect is zero. The school comparison weighted average represents a weighted average of performance of the schools in the relevant grouping for this school, weighted by the share of students in this charter who would have attended.

### SGP Results Summary by Grade Level and Subject

Student Growth Percentiles (Controls only for Prior Test Scores)								
Grade Level and Subject	School Mean of Individual SGPs	State Percentile (higher is better)	School Comparison Rank (lower is better)	School Comparison Weighted Average SGP	Share of students 1-29	Share of students 30-40	Share of students 41-65	Share of students 66-99
<i>Elementary</i>								
ELA	55.1	79	1 out of 2	37.6	0.23	0.08	0.34	0.35
Math	59.1	86	1 out of 2	30.5	0.18	0.15	0.21	0.45
All-Subject Average	59.0	84	1 out of 2	36.3	0.16	0.09	0.31	0.44
<i>Middle</i>								
ELA	56.8	87	2 out of 5	56.5	0.20	0.09	0.27	0.44
Math	53.9	73	2 out of 5	56.5	0.19	0.17	0.25	0.39
All-Subject Average	58.8	84	2 out of 5	61.6	0.15	0.09	0.31	0.45
<i>High</i>								
American Literature	38.7	12	1 out of 2	37.4	0.21	0.29	0.18	0.32
Algebra 1	22.5	1	1 out of 1	0.0	0.58	0.09	0.13	0.20
All-Subject Average	31.6	3	2 out of 2	39.0	0.44	0.17	0.14	0.25

### 2021 Gap-Year Value Added Estimates

For comparison purposes, estimates from 2021 gap-year value added are presented below.

	2021 Gap-Year Value-Added (Controls for Student Demographics and Prior Test Scores)					
Grade Level and Subject	School Effect	State Percentile (higher is better)	Statistically Different from State Average?	School Comparison Rank (lower is better)	School Comparison Average	Statistically Different from School Comparison Average?
<i>Elementary</i>						
ELA	-0.0554	34	No			
Math	-0.2665	14	Lower			
All-Subject Average	-0.1389	20	Lower			
<i>Middle</i>						
ELA	-0.2699	1	Lower	5 out of 5	-0.0574	Lower
Math	-0.2587	4	Lower	5 out of 5	-0.0852	Lower
All-Subject Average	-0.2295	2	Lower	5 out of 5	-0.0650	Lower
<i>High</i>						
American Literature	-0.5198	3	Lower	3 out of 3	-0.0844	Lower
Algebra 1	-0.4914	2	Lower	2 out of 2	-0.2908	No
All Subject Average	-0.5014	2	Lower	3 out of 3	-0.1623	Lower

Note. Statistical significance is based on a 95 percent confidence level. The state average value-added effect is zero. The attendance-zone average represents the simple average of the school effects of all schools in the relevant grouping for this school.

## Genesis Academy for Boys

### General Characteristics

School Name	Calendar Year Opened	ESP Affiliation	Grades Served	School Model	Attendance Zone
Genesis Academy for boys	2017	No	K-9	College preparatory; Extended Day/Week/Year; Single-gender	Statewide

### Students Served

School Name	Female	White	Black	Hispanic	Other Race	FRL	Direct Cert	LEP	SWD
Genesis - Boys	0	0.3	90.1	8.4	1.2	89.5	29.3	5.7	10.5

Note. All data are reported percentages (% omitted)

### Value-Added Results Summary by Grade Level and Subject

Genesis Academy for Boys’ contribution to an elementary and middle school student’s average achievement across ELA and Math is statistically similar to the state average and relative to its comparison school group. It is important to note that averaging achievement scores across subjects masks any variation in school performance between subject areas. As a result, the table below also includes the school’s effect on student achievement in each subject area.

Grade Level and Subject	Value-Added (Controls for Student Demographics and Prior Test Scores)					
	School Effect	State Percentile (higher is better)	Statistically Different from State Average?	School Comparison Rank (lower is better)	School Comparison Weighted Average	Statistically Different from School Comparison Average?
<i>Elementary</i>						
ELA	-0.057	30	No	57 out of 64	0.092	No
Math	0.284	96	Higher	14 out of 64	0.131	No
All-Subject Average	0.121	87	No	29 out of 64	0.113	No
<i>Middle</i>						
ELA	0.072	78	No	21 out of 42	0.084	No
Math	-0.035	39	No	34 out of 42	0.134	No
All-Subject Average	0.012	55	No	30 out of 42	0.103	No

Note. Statistical significance is based on a 95 percent confidence level. The state average value-added effect is zero. The school comparison weighted average represents a weighted average of performance of the schools in the relevant grouping for this school, weighted by the share of students in this charter who would have attended.

### SGP Results Summary by Grade Level and Subject

Grade Level and Subject	Student Growth Percentiles (Controls only for Prior Test Scores)							
	School Mean of Individual SGPs	State Percentile (higher is better)	School Comparison Rank (lower is better)	School Comparison Weighted Average SGP	Share of students 1-29	Share of students 30-40	Share of students 41-65	Share of students 66-99
<i>Elementary</i>								
ELA	49.7	47	39 out of 64	50.5	0.26	0.21	0.26	0.26
Math	62.9	93	7 out of 64	50.8	0.11	0.28	0.11	0.50
All-Subject Average	61.2	90	13 out of 64	54.6	0.26	0.11	0.05	0.58
<i>Middle</i>								
ELA	58.0	90	2 out of 42	48.6	0.22	0.17	0.22	0.39
Math	52.3	67	11 out of 42	48.6	0.26	0.22	0.26	0.26
All-Subject Average	57.7	81	5 out of 42	52.3	0.26	0.04	0.30	0.39

### 2021 Gap-Year Value Added Estimates

For comparison purposes, estimates from 2021 gap-year value added are presented below.

Grade Level and Subject	2021 Gap-Year Value-Added (Controls for Student Demographics and Prior Test Scores)					
	School Effect	State Percentile (higher is better)	Statistically Different from State Average?	School Comparison Rank (lower is better)	School Comparison Average	Statistically Different from School Comparison Average?
<i>Middle</i>						
ELA	0.0331	62	No	6 out of 49	-0.0607	No
Math	-0.1875	10	No	42 out of 49	-0.0831	No
All-Subject Average	-0.0997	18	No	35 out of 49	-0.0649	No

Note. Statistical significance is based on a 95 percent confidence level. The state average value-added effect is zero. The attendance-zone average represents the simple average of the school effects of all schools in the relevant grouping for this school. There were too few tested students in elementary grades to calculate performance measures.

## Genesis Academy for Girls

### General Characteristics

School Name	Calendar Year Opened	ESP Affiliation	Grades Served	School Model	Attendance Zone
Genesis Academy for Girls	2017	No	K-9	College preparatory; Extended Day/Week/Year; Single-gender	Statewide

### Students Served

School Name	Female	White	Black	Hispanic	Other Race	FRL	Direct Cert	LEP	SWD
Genesis - Girls	100	1.5	90	7.6	0.9	79.8	32.6	3.6	5.4

Note. All data are reported percentages (% omitted)

### Value-Added Results Summary by Grade Level and Subject

Genesis Academy for Girls' contribution to an elementary, middle, and high school student's average achievement across ELA and Math is not statistically different than the state average, nor relative to its comparison schools. It is important to note that averaging achievement scores across subjects masks any variation in school performance between subject areas. As a result, the table below also includes the school's effect on student achievement in each subject area.

Grade Level and Subject	Value-Added (Controls for Student Demographics and Prior Test Scores)					
	School Effect	State Percentile (higher is better)	Statistically Different from State Average?	School Comparison Rank (lower is better)	School Comparison Weighted Average	Statistically Different from School Comparison Average?
<i>Elementary</i>						
ELA	0.026	60	No	15 out of 36	0.033	No
Math	-0.067	31	Lower	26 out of 36	0.121	Lower
All-Subject Average	-0.023	43	No	24 out of 36	0.085	Lower
<i>Middle</i>						
ELA	-0.017	41	No	18 out of 20	0.090	Lower
Math	-0.025	41	No	13 out of 20	0.049	Lower
All-Subject Average	-0.010	45	No	13 out of 20	0.070	Lower
<i>High</i>						
American Literature	0.086	80	No	1 out of 15	-0.083	Higher
Algebra 1	0.535	98	Higher	1 out of 14	-0.127	Higher
All-Subject Average	0.299	98	Higher	1 out of 15	-0.125	Higher

Note. Statistical significance is based on a 95 percent confidence level. The state average value-added effect is zero. The school comparison weighted average represents a weighted average of performance of the schools in the relevant grouping for this school, weighted by the share of students in this charter who would have attended.

### SGP Results Summary by Grade Level and Subject

Grade Level and Subject	Student Growth Percentiles (Controls only for Prior Test Scores)							
	School Mean of Individual SGPs	State Percentile (higher is better)	School Comparison Rank (lower is better)	School Comparison Weighted Average SGP	Share of students 1-29	Share of students 30-40	Share of students 41-65	Share of students 66-99
<i>Elementary</i>								
ELA	54.4	76	20 out of 66	50.1	0.25	0.08	0.17	0.50
Math	61.4	91	6 out of 66	51.4	0.07	0.07	0.36	0.50
All-Subject Average	59.3	85	18 out of 66	54.3	0.23	0.00	0.23	0.54
<i>Middle</i>								
ELA	51.8	64	16 out of 42	49.3	0.15	0.08	0.46	0.31
Math	58.9	89	1 out of 42	49.3	0.08	0.23	0.23	0.46
All-Subject Average	60.3	88	3 out of 42	52.4	0.08	0.08	0.46	0.38
<i>High</i>								
American Literature								
Algebra 1	45.0	38	5 out of 10	33.1	0.27	0.07	0.27	0.40
All-Subject Average	43.7	26	9 out of 15	44.1	0.27	0.07	0.33	0.33

### 2021 Gap-Year Value Added Estimates

For comparison purposes, estimates from 2021 gap-year value added are presented below.

Grade Level and Subject	Student Growth Percentiles (Controls only for Prior Test Scores)							
	School Mean of Individual SGPs	State Percentile (higher is better)	School Comparison Rank (lower is better)	School Comparison Weighted Average SGP	Share of students 1-29	Share of students 30-40	Share of students 41-65	Share of students 66-99
<i>Middle</i>								
ELA	0.2090	97	No	1 out of 45	-0.0620	No	0.429	0.257
Math	-0.0186	47	No	11 out of 45	-0.0987	No	0.424	0.061
All-Subject Average	0.1034	80	No	1 out of 45	-0.0656	No	0.229	0.200

Note. Statistical significance is based on a 95 percent confidence level. The state average value-added effect is zero. The attendance-zone average represents the simple average of the school effects of all schools in the relevant grouping for this school.

## Georgia Connections Academy

### General Characteristics

School Name	Calendar Year Opened	ESP Affiliation	Grades Served	School Model	Attendance Zone
Georgia Connections Academy	2011	Connections Academy	5-12	Virtual offerings; Online Curriculum	Statewide

### Students Served

School Name	Female	White	Black	Hispanic	Other Race	FRL	Direct Cert	LEP	SWD
GA Connections	52.9	41.7	38.3	9.9	10.1	35.2	22.2	0.9	15.5

Note. All data are reported percentages (% omitted)

### Value-Added Results Summary by Grade Level and Subject

Georgia Connections Academy’s contribution to an elementary, middle, and high school student’s average achievement across ELA and Math is lower than the average elementary, middle, and high school in the state. A similar pattern emerges when comparing against the relevant comparison group schools. It is important to note that averaging achievement scores across subjects masks any variation in school performance between subject areas. As a result, the table below also includes the school’s effect on student achievement in each subject area.

Grade Level and Subject	Value-Added (Controls for Student Demographics and Prior Test Scores)					
	School Effect	State Percentile (higher is better)	Statistically Different from State Average?	School Comparison Rank (lower is better)	School Comparison Weighted Average	Statistically Different from School Comparison Average?
<i>Elementary</i>						
ELA	-0.083	22	No	179 out of 225	0.003	No
Math	-0.301	2	Lower	223 out of 225	0.020	Lower
All-Subject Average	-0.183	5	Lower	218 out of 225	0.013	Lower
<i>Middle</i>						
ELA	0.002	50	No	215 out of 408	0.014	No
Math	-0.209	2	Lower	402 out of 408	0.013	Lower
All-Subject Average	-0.108	12	Lower	370 out of 408	0.015	Lower
<i>High</i>						
American Literature	0.118	85	Higher	47 out of 327	0.001	Higher
Algebra 1	-0.236	16	Lower	245 out of 289	0.007	Lower
All-Subject Average	-0.056	35	Lower	209 out of 330	0.006	Lower

Note. Statistical significance is based on a 95 percent confidence level. The state average value-added effect is zero. The school comparison weighted average represents a weighted average of performance of the schools in the relevant grouping for this school, weighted by the share of students in this charter who would have attended.

### SGP Results Summary by Grade Level and Subject

Grade Level and Subject	Student Growth Percentiles (Controls only for Prior Test Scores)							
	School Mean of Individual SGPs	State Percentile (higher is better)	School Comparison Rank (lower is better)	School Comparison Weighted Average SGP	Share of students 1-29	Share of students 30-40	Share of students 41-65	Share of students 66-99
<i>Elementary</i>								
ELA	41.2	10	199 out of 225	49.3	0.404	0.105	0.246	0.246
Math	34.0	5	222 out of 225	49.6	0.576	0.102	0.153	0.169
All-Subject Average	33.7	3	224 out of 225	50.3	0.517	0.190	0.138	0.155
<i>Middle</i>								
ELA	48.4	42	240 out of 408	49.4	0.336	0.101	0.244	0.319
Math	39.3	14	370 out of 408	49.4	0.447	0.126	0.214	0.214
All-Subject Average	43.2	19	343 out of 408	50.3	0.388	0.123	0.223	0.265
<i>High</i>								
American Literature	68.4	99	3 out of 327	48.5	0.193	0.082	0.245	0.480
Algebra 1	44.4	37	188 out of 289	43.4	0.397	0.112	0.267	0.224
All-Subject Average	52.2	67	108 out of 330	49.2	0.310	0.101	0.245	0.344

### 2021 Gap-Year Value Added Estimates

For comparison purposes, estimates from 2021 gap-year value added are presented below.

Grade Level and Subject	2021 Gap-Year Value-Added (Controls for Student Demographics and Prior Test Scores)					
	School Effect	State Percentile (higher is better)	Statistically Different from State Average?	School Comparison Rank (lower is better)	School Comparison Average	Statistically Different from School Comparison Average?
<i>Elementary</i>						
ELA	0.1325	83	No	41 out of 225	-0.0014	No
Math	-0.3096	10	Lower	203 out of 224	-0.0177	Lower
All-Subject Average	-0.1084	26	No	165 out of 225	-0.0081	No
<i>Middle</i>						
ELA	0.1732	94	Higher	19 out of 430	-0.0192	Higher
Math	-0.1674	13	Lower	357 out of 430	-0.0250	Lower
All-Subject Average	-0.0033	52	No	179 out of 430	-0.0197	No
<i>High</i>						
American Literature	0.2287	89	Higher	26 out of 325	-0.0682	Higher
Algebra 1	0.1640	80	No	52 out of 289	-0.0308	Higher
All Subject Average	0.2007	82	Higher	49 out of 339	-0.0390	Higher

Note. Statistical significance is based on a 95 percent confidence level. The state average value-added effect is zero. The attendance-zone average represents the simple average of the school effects of all schools in the relevant grouping for this school.



## Georgia Cyber Academy

### General Characteristics

School Name	Calendar Year Opened	ESP Affiliation	Grades Served	School Model	Attendance Zone
Georgia Cyber Academy	2014	K12 Inc.	K-12	Virtual offerings; Online Curriculum	Statewide

### Students Served

School Name	Female	White	Black	Hispanic	Other Race	FRL	Direct Cert	LEP	SWD
GA Cyber	51.4	28.8	50.6	9.8	10.8	35.4	37.4	1.9	16

Note. All data are reported percentages (% omitted)

### Value-Added Results Summary by Grade Level and Subject

Georgia Cyber Academy’s contribution to an elementary school student’s cross-subject average achievement is lower than that of the average elementary school in the state and lower related to its comparison schools. Georgia Cyber Academy’s contribution to a middle and high school student’s average achievement is statistically higher than the state average and higher related to its comparison schools. It is important to note that averaging achievement scores across subjects masks any variation in school performance between subject areas. As a result, the table below also includes the school’s effect on student achievement in each subject area.

Grade Level and Subject	Value-Added (Controls for Student Demographics and Prior Test Scores)					
	School Effect	State Percentile (higher is better)	Statistically Different from State Average?	School Comparison Rank (lower is better)	School Comparison Weighted Average	Statistically Different from School Comparison Average?
<i>Elementary</i>						
ELA	-0.009	47	No	454 out of 795	0.012	No
Math	-0.244	4	Lower	775 out of 795	0.027	Lower
All-Subject Average	-0.119	12	Lower	715 out of 795	0.021	Lower
<i>Middle</i>						
ELA	0.106	87	Higher	62 out of 438	0.018	Higher
Math	0.059	70	Higher	146 out of 438	0.017	Higher
All-Subject Average	0.065	75	Higher	120 out of 438	0.018	Higher
<i>High</i>						

Value-Added (Controls for Student Demographics and Prior Test Scores)						
Grade Level and Subject	School Effect	State Percentile (higher is better)	Statistically Different from State Average?	School Comparison Rank (lower is better)	School Comparison Weighted Average	Statistically Different from School Comparison Average?
American Literature	0.239	98	Higher	3 out of 342	-0.003	Higher
Algebra 1	0.037	57	No	130 out of 306	-0.007	No
All-Subject Average	0.139	82	Higher	55 out of 345	-0.003	Higher

Note. Statistical significance is based on a 95 percent confidence level. The state average value-added effect is zero. The school comparison weighted average represents a weighted average of performance of the schools in the relevant grouping for this school, weighted by the share of students in this charter who would have attended.

### SGP Results Summary by Grade Level and Subject

Student Growth Percentiles (Controls only for Prior Test Scores)								
Grade Level and Subject	School Mean of Individual SGPs	State Percentile (higher is better)	School Comparison Rank (lower is better)	School Comparison Weighted Average SGP	Share of students 1-29	Share of students 30-40	Share of students 41-65	Share of students 66-99
<i>Elementary</i>								
ELA	47.7	34	514 out of 795	48.8	0.33	0.10	0.26	0.31
Math	34.3	5	763 out of 795	49.0	0.51	0.11	0.23	0.14
All-Subject Average	40.8	13	707 out of 795	50.1	0.40	0.13	0.25	0.21
<i>Middle</i>								
ELA	53.1	72	101 out of 438	49.0	0.25	0.12	0.25	0.38
Math	51.5	64	142 out of 438	49.0	0.26	0.11	0.27	0.35
All-Subject Average	53.7	65	131 out of 438	50.0	0.24	0.12	0.26	0.38
<i>High</i>								
American Literature	58.5	88	31 out of 342	47.7	0.20	0.10	0.22	0.48
Algebra 1	45.1	39	194 out of 306	41.5	0.34	0.13	0.25	0.28
All-Subject Average	53.7	74	80 out of 345	48.3	0.28	0.10	0.24	0.37

### 2021 Gap-Year Value Added Estimates

For comparison purposes, estimates from 2021 gap-year value added are presented below.

	2021 Gap-Year Value-Added (Controls for Student Demographics and Prior Test Scores)					
Grade Level and Subject	School Effect	State Percentile (higher is better)	Statistically Different from State Average?	School Comparison Rank (lower is better)	School Comparison Average	Statistically Different from School Comparison Average?
<i>Elementary</i>						
ELA	0.0644	67	Higher	308 out of 932	-0.0050	Higher
Math	-0.1880	21	Lower	696 out of 930	-0.0241	Lower
All-Subject Average	-0.0524	38	Lower	546 out of 933	-0.0136	No
<i>Middle</i>						
ELA	0.1912	96	Higher	13 out of 446	-0.0191	Higher
Math	0.1408	83	Higher	56 out of 446	-0.0248	Higher
All-Subject Average	0.1650	93	Higher	26 out of 446	-0.0195	Higher
<i>High</i>						
American Literature	0.3802	97	Higher	5 out of 338	-0.0614	Higher
Algebra 1	0.1178	71	Higher	70 out of 303	-0.0317	Higher
All Subject Average	0.2481	88	Higher	32 out of 353	-0.0369	Higher

Note. Statistical significance is based on a 95 percent confidence level. The state average value-added effect is zero. The attendance-zone average represents the simple average of the school effects of all schools in the relevant grouping for this school.

## Georgia Fugees Academy Charter School

### General Characteristics

School Name	Calendar Year Opened	ESP Affiliation	Grades Served	School Model	Attendance Zone
Georgia Fugees Academy Charter School	2020	Fugees Family, Inc.	6-12	English language acquisition and foundational skills for refugee and immigrant students	Statewide

### Students Served

School Name	Female	White	Black	Hispanic	Other Race	FRL	Direct Cert	LEP	SWD
GA Fugees	39.9	11.9	48.2	1.8	38.1	0	38.1	78.3	1.8

Note. All data are reported percentages (% omitted)

### Value-Added Results Summary by Grade Level and Subject

Georgia Fugees Academy’s contribution to middle school student’s cross-subject average achievement is lower than the state average and lower relative to its comparison schools. It is important to note that averaging achievement scores across subjects masks any variation in school performance between subject areas. As a result, the table below also includes the school’s effect on student achievement in each subject area. Too few tested students in high school grades.

Grade Level and Subject	Value-Added (Controls for Student Demographics and Prior Test Scores)					
	School Effect	State Percentile (higher is better)	Statistically Different from State Average?	School Comparison Rank (lower is better)	School Comparison Weighted Average	Statistically Different from School Comparison Average?
<i>Middle</i>						
ELA	-0.129	9	No	12 out of 12	0.112	Lower
Math	-0.156	8	Lower	12 out of 12	0.065	Lower
All-Subject Average	-0.123	9	Lower	12 out of 12	0.078	Lower

Note. Statistical significance is based on a 95 percent confidence level. The state average value-added effect is zero. The school comparison weighted average represents a weighted average of performance of the schools in the relevant grouping for this school, weighted by the share of students in this charter who would have attended.

### SGP Results Summary by Grade Level and Subject

Grade Level and Subject	Student Growth Percentiles (Controls only for Prior Test Scores)							
	School Mean of Individual SGPs	State Percentile (higher is better)	School Comparison Rank (lower is better)	School Comparison Weighted Average SGP	Share of students 1-29	Share of students 30-40	Share of students 41-65	Share of students 66-99
<i>Middle</i>								
ELA	46.0	28	11 out of 12	53.7	0.31	0.13	0.26	0.31

	Student Growth Percentiles (Controls only for Prior Test Scores)							
Grade Level and Subject	School Mean of Individual SGPs	State Percentile (higher is better)	School Comparison Rank (lower is better)	School Comparison Weighted Average SGP	Share of students 1-29	Share of students 30-40	Share of students 41-65	Share of students 66-99
Math	46.8	40	11 out of 12	53.7	0.30	0.08	0.33	0.28
All-Subject Average	48.9	44	11 out of 12	57.9	0.31	0.08	0.24	0.37

### 2021 Gap-Year Value Added Estimates

For comparison purposes, estimates from 2021 gap-year value added are presented below.

	2021 Gap-Year Value-Added (Controls for Student Demographics and Prior Test Scores)					
Grade Level and Subject	School Effect	State Percentile (higher is better)	Statistically Different from State Average?	School Comparison Rank (lower is better)	School Comparison Average	Statistically Different from School Comparison Average?
<i>Middle</i>						
ELA	-0.0357	36	No	3 out of 9	-0.1112	No
Math	-0.0062	50	No	1 out of 9	-0.1897	No
All-Subject Average	0.0387	66	No	1 out of 9	-0.1618	Higher

Note. Statistical significance is based on a 95 percent confidence level. The state average value-added effect is zero. The attendance-zone average represents the simple average of the school effects of all schools in the relevant grouping for this school.

## Georgia School for Innovation and the Classics

### General Characteristics

School Name	Calendar Year Opened	ESP Affiliation	Grades Served	School Model	Attendance Zone
Georgia School for Innovation and the Classics	2015	No	K-11	Classical education approach with career pathways for secondary students (Linguistics, Nuclear Tech, Sustainable Ag, Entertainment Tech)	Statewide

### Students Served

School Name	Female	White	Black	Hispanic	Other Race	FRL	Direct Cert	LEP	SWD
GA Innovation	48.2	78.5	10.3	5.4	5.8	0	15.8	0	8.2

Note. All data are reported percentages (% omitted)

### Value-Added Results Summary by Grade Level and Subject

Georgia School for Innovation and the Classics’ contribution to an elementary student’s average achievement across subjects is lower than that of the state average and lower relative to its comparison schools. Its contribution to a middle school student’s average achievement across subjects is statistically indistinguishable to the state average, but is statistically higher relative to its comparison schools. Its contribution to a high school student’s average achievement across subjects is lower than the state average but indistinguishable relative to its comparison schools. It is important to note that averaging achievement scores across subjects masks any variation in school performance between subject areas. As a result, the table below also includes the school’s effect on student achievement in each subject area.

Grade Level and Subject	Value-Added (Controls for Student Demographics and Prior Test Scores)					
	School Effect	State Percentile (higher is better)	Statistically Different from State Average?	School Comparison Rank (lower is better)	School Comparison Weighted Average	Statistically Different from School Comparison Average?
<i>Elementary</i>						
ELA	-0.072	26	No	20 out of 30	0.020	Lower
Math	-0.241	4	Lower	28 out of 30	0.016	Lower
All-Subject Average	-0.128	11	Lower	25 out of 30	0.020	Lower
<i>Middle</i>						
ELA	0.050	70	No	1 out of 18	-0.065	Higher

	Value-Added (Controls for Student Demographics and Prior Test Scores)					
Grade Level and Subject	School Effect	State Percentile (higher is better)	Statistically Different from State Average?	School Comparison Rank (lower is better)	School Comparison Weighted Average	Statistically Different from School Comparison Average?
Math	-0.023	42	No	5 out of 18	-0.134	Higher
All-Subject Average	0.039	66	No	1 out of 18	-0.088	Higher
<i>High</i>						
American Literature	0.011	54	No	2 out of 13	-0.206	Higher
Algebra 1	-0.444	1	Lower	10 out of 11	-0.280	Lower
All-Subject Average	-0.256	3	Lower	9 out of 13	-0.271	No

Note. Statistical significance is based on a 95 percent confidence level. The state average value-added effect is zero. The school comparison weighted average represents a weighted average of performance of the schools in the relevant grouping for this school, weighted by the share of students in this charter who would have attended.

### SGP Results Summary by Grade Level and Subject

	Student Growth Percentiles (Controls only for Prior Test Scores)							
Grade Level and Subject	School Mean of Individual SGPs	State Percentile (higher is better)	School Comparison Rank (lower is better)	School Comparison Weighted Average SGP	Share of students 1-29	Share of students 30-40	Share of students 41-65	Share of students 66-99
<i>Elementary</i>								
ELA	52.1	64	11 out of 30	48.5	0.25	0.13	0.25	0.36
Math	41.7	18	17 out of 30	46.1	0.37	0.13	0.26	0.23
All-Subject Average	45.3	26	16 out of 30	48.1	0.34	0.06	0.35	0.25
<i>Middle</i>								
ELA	59.3	92	1 out of 18	43.2	0.19	0.08	0.25	0.48
Math	57.0	83	2 out of 18	43.2	0.19	0.06	0.31	0.43
All-Subject Average	58.9	84	1 out of 18	40.0	0.16	0.13	0.26	0.46
<i>High</i>								
American Literature	57.0	85	1 out of 13	38.3	0.21	0.08	0.23	0.49
Algebra 1	40.5	25	5 out of 11	38.4	0.52	0.14	0.20	0.14
All-Subject Average	43.9	28	6 out of 13	36.0	0.42	0.11	0.21	0.26

### 2021 Gap-Year Value Added Estimates

For comparison purposes, estimates from 2021 gap-year value added are presented below.

Grade Level and Subject	2021 Gap-Year Value-Added (Controls for Student Demographics and Prior Test Scores)					
	School Effect	State Percentile (higher is better)	Statistically Different from State Average?	School Comparison Rank (lower is better)	School Comparison Average	Statistically Different from School Comparison Average?
<i>Elementary</i>						
ELA	-0.0524	34	No	27 out of 38	-0.0033	No
Math	-0.0308	45	No	19 out of 38	-0.0165	No
All-Subject Average	-0.0220	46	No	22 out of 38	-0.0017	No
<i>Middle</i>						
ELA	0.0501	68	No	5 out of 14	-0.0169	No
Math	0.1482	85	Higher	1 out of 14	-0.0541	Higher
All-Subject Average	0.1378	88	Higher	1 out of 14	-0.0294	Higher
<i>High</i>						
American Literature	0.0865	61	No	1 out of 10	-0.1688	Higher
Algebra 1	-0.4902	2	Lower	10 out of 10	-0.2587	Lower
All Subject Average	-0.2602	11	Lower	6 out of 10	-0.2374	No

Note. Statistical significance is based on a 95 percent confidence level. The state average value-added effect is zero. The attendance-zone average represents the simple average of the school effects of all schools in the relevant grouping for this school.



## International Charter Academy of Georgia

### General Characteristics

School Name	Calendar Year Opened	ESP Affiliation	Grades Served	School Model	Attendance Zone
International Charter Academy of Georgia	2018	No	K-5	Dual language program, English/Japanese	Statewide

### Students Served

School Name	Female	White	Black	Hispanic	Other Race	FRL	Direct Cert	LEP	SWD
International - Georgia	52.4	6.3	20.9	10.5	62.3	0.5	6.5	40.9	2.6

Note. All data are reported percentages (% omitted)

### Value-Added Results Summary by Grade Level and Subject

International Charter Academy of Georgia’s contribution to an elementary student’s average achievement across subjects is indistinguishable from the state average and indistinguishable relevant to its comparison schools. It is important to note that averaging achievement scores across subjects masks any variation in school performance between subject areas. As a result, the table below also includes the school’s effect on student achievement in each subject area.

Grade Level and Subject	Value-Added (Controls for Student Demographics and Prior Test Scores)					
	School Effect	State Percentile (higher is better)	Statistically Different from State Average?	School Comparison Rank (lower is better)	School Comparison Weighted Average	Statistically Different from School Comparison Average?
<i>Elementary</i>						
ELA	-0.207	3	No	43 out of 43	0.050	Lower
Math	-0.022	44	No	33 out of 43	0.062	No
All-Subject Average	-0.102	16	No	41 out of 43	0.052	No

Note. Statistical significance is based on a 95 percent confidence level. The state average value-added effect is zero. The school comparison weighted average represents a weighted average of performance of the schools in the relevant grouping for this school, weighted by the share of students in this charter who would have attended.

### SGP Results Summary by Grade Level and Subject

Grade Level and Subject	Student Growth Percentiles (Controls only for Prior Test Scores)							
	School Mean of Individual SGPs	State Percentile (higher is better)	School Comparison Rank (lower is better)	School Comparison Weighted Average SGP	Share of students 1-29	Share of students 30-40	Share of students 41-65	Share of students 66-99
<i>Elementary</i>								
ELA	49.9	49	31 out of 43	53.6	0.31	0.12	0.15	0.42
Math	67.3	97	1 out of 43	55.6	0.16	0.08	0.08	0.68
All-Subject Average	59.3	85	13 out of 43	55.9	0.16	0.12	0.24	0.48

### 2021 Gap-Year Value Added Estimates

2021 gap-year value added are not available for International Charter Academy of Georgia.

## International Academy of Smyrna

### General Characteristics

School Name	Calendar Year Opened	ESP Affiliation	Grades Served	School Model	Attendance Zone
International Academy of Smyrna	2017	No	K-5	International Baccalaureate Program, Primary and Middle Years programs	Cobb County School District

### Students Served

School Name	Female	White	Black	Hispanic	Other Race	FRL	Direct Cert	LEP	SWD
International - Smyrna	53.9	0.8	71.6	21.6	6	53.9	40.4	12.5	5.9

Note. All data are reported percentages (% omitted)

### Value-Added Results Summary by Grade Level and Subject

International Academy of Smyrna’s contribution to an elementary school student’s cross-subject average achievement is statistically higher than that of the average elementary in the state and school comparison group. It is important to note that averaging achievement scores across subjects masks any variation in school performance between subject areas. As a result, the table below also includes the school’s effect on student achievement in each subject area.

Grade Level and Subject	Value-Added (Controls for Student Demographics and Prior Test Scores)					
	School Effect	State Percentile (higher is better)	Statistically Different from State Average?	School Comparison Rank (lower is better)	School Comparison Weighted Average	Statistically Different from School Comparison Average?
<i>Elementary</i>						
ELA	0.248	98	Higher	1 out of 36	0.081	Higher
Math	0.225	94	Higher	3 out of 36	0.033	Higher
All-Subject Average	0.243	98	Higher	3 out of 36	0.060	Higher

Note. Statistical significance is based on a 95 percent confidence level. The state average value-added effect is zero. The school comparison weighted average represents a weighted average of performance of the schools in the relevant grouping for this school, weighted by the share of students in this charter who would have attended.

### SGP Results Summary by Grade Level and Subject

Grade Level and Subject	Student Growth Percentiles (Controls only for Prior Test Scores)							
	School Mean of Individual SGPs	State Percentile (higher is better)	School Comparison Rank (lower is better)	School Comparison Weighted Average SGP	Share of students 1-29	Share of students 30-40	Share of students 41-65	Share of students 66-99
<i>Elementary</i>								
ELA	61.5	95	1 out of 36	52.4	0.11	0.15	0.27	0.47
Math	59.1	86	6 out of 36	53.1	0.22	0.14	0.12	0.52
All-Subject Average	64.9	95	2 out of 36	54.9	0.12	0.11	0.22	0.55

### 2021 Gap-Year Value Added Estimates

For comparison purposes, estimates from 2021 gap-year value added are presented below.

Grade Level and Subject	Student Growth Percentiles (Controls only for Prior Test Scores)							
	School Mean of Individual SGPs	State Percentile (higher is better)	School Comparison Rank (lower is better)	School Comparison Weighted Average SGP	Share of students 1-29	Share of students 30-40	Share of students 41-65	Share of students 66-99
<i>Elementary</i>								
ELA	0.0470	62	No	21 out of 45	0.0376	No	0.429	0.257
Math	-0.1487	27	No	32 out of 45	-0.0496	No	0.424	0.061
All-Subject Average	-0.0457	39	No	26 out of 45	-0.0058	No	0.229	0.200

Note. Statistical significance is based on a 95 percent confidence level. The state average value-added effect is zero. The attendance-zone average represents the simple average of the school effects of all schools in the relevant grouping for this school.

## International Charter School of Atlanta

### General Characteristics

School Name	Calendar Year Opened	ESP Affiliation	Grades Served	School Model	Attendance Zone
International Charter School of Atlanta	2015	No	K-8	Language immersion emphasis (French, German, Spanish, Mandarin)	Statewide

### Students Served

School Name	Female	White	Black	Hispanic	Other Race	FRL	Direct Cert	LEP	SWD
International - Atlanta	54.6	35.1	24.3	23.0	17.6	1.0	7.8	3.7	6.4

Note. All data are reported percentages (% omitted)

### Value-Added Results Summary by Grade Level and Subject

International Charter School of Atlanta’s contribution to an elementary student’s cross-subject average achievement is not statistically different from that of the state average or school comparison group. Its contribution to a middle school student’s average achievement across subjects is statistically indistinguishable to the state average and relative to its comparison schools. It is important to note that averaging achievement scores across subjects masks any variation in school performance between subject areas. As a result, the table below also includes the school’s effect on student achievement in each subject area.

Grade Level and Subject	Value-Added (Controls for Student Demographics and Prior Test Scores)					
	School Effect	State Percentile (higher is better)	Statistically Different from State Average?	School Comparison Rank (lower is better)	School Comparison Weighted Average	Statistically Different from School Comparison Average?
<i>Elementary</i>						
ELA	-0.028	39	No	67 out of 98	0.023	No
Math	0.037	64	No	42 out of 98	0.006	No
All-Subject Average	0.010	54	No	48 out of 98	0.010	No
<i>Middle</i>						
ELA	0.125	90	Higher	12 out of 49	0.053	No
Math	-0.112	16	Lower	47 out of 49	0.008	Lower
All-Subject Average	-0.006	47	No	36 out of 49	0.027	No

Note. Statistical significance is based on a 95 percent confidence level. The state average value-added effect is zero. The school comparison weighted average represents a weighted average of performance of the schools in the relevant grouping for this school, weighted by the share of students in this charter who would have attended.

### SGP Results Summary by Grade Level and Subject

Grade Level and Subject	Student Growth Percentiles (Controls only for Prior Test Scores)							
	School Mean of Individual SGPs	State Percentile (higher is better)	School Comparison Rank (lower is better)	School Comparison Weighted Average SGP	Share of students 1-29	Share of students 30-40	Share of students 41-65	Share of students 66-99
<i>Elementary</i>								
ELA	50.1	50	73 out of 98	53.8	0.28	0.13	0.24	0.35
Math	57.0	80	33 out of 98	53.6	0.18	0.08	0.34	0.40
All-Subject Average	53.7	65	46 out of 98	53.9	0.18	0.15	0.32	0.35
<i>Middle</i>								
ELA	59.5	93	6 out of 49	54.9	0.17	0.08	0.30	0.45
Math	51.2	62	24 out of 49	54.9	0.24	0.16	0.23	0.37
All-Subject Average	53.8	66	26 out of 49	55.1	0.22	0.11	0.34	0.33

### 2021 Gap-Year Value Added Estimates

For comparison purposes, estimates from 2021 gap-year value added are presented below.

Grade Level and Subject	2021 Gap-Year Value-Added (Controls for Student Demographics and Prior Test Scores)					
	School Effect	State Percentile (higher is better)	Statistically Different from State Average?	School Comparison Rank (lower is better)	School Comparison Average	Statistically Different from School Comparison Average?
<i>Elementary</i>						
ELA	0.1604	87	Higher	23 out of 163	0.0013	Higher
Math	-0.0119	48	No	77 out of 163	-0.0351	No
All-Subject Average	0.0636	64	No	51 out of 163	-0.0195	No
<i>Middle</i>						
ELA	0.1498	93	Higher	1 out of 46	-0.0513	Higher
Math	0.1148	79	No	4 out of 46	-0.0422	Higher
All-Subject Average	0.1360	88	Higher	2 out of 46	-0.0476	Higher

Note. Statistical significance is based on a 95 percent confidence level. The state average value-added effect is zero. The attendance-zone average represents the simple average of the school effects of all schools in the relevant grouping for this school.

## Ivy Preparatory Academy at Kirkwood for Girls

### General Characteristics

School Name	Calendar Year Opened	ESP Affiliation	Grades Served	School Model	Attendance Zone
Ivy Preparatory Academy at Kirkwood	2011	No	K-8	Curriculum is entirely College Preparatory. Saturday Academy is available to struggling students; Extended Day/Week/Year; Single-gender	DeKalb County and Atlanta Public Schools

### Students Served

School Name	Female	White	Black	Hispanic	Other Race	FRL	Direct Cert	LEP	SWD
Ivy Prep. – Kirkwood	100	0	92.6	5.9	1.5	100	40.7	0.5	7.4

Note. All data are reported percentages (% omitted)

### Value-Added Results Summary by Grade Level and Subject

Ivy Preparatory Academy at Kirkwood for Girls’ contribution to an elementary school student’s cross-subject average achievement is indistinguishable from the average elementary school in the state, but lower compared to its comparison schools. For middle school students, its contribution is higher than the state average, but indistinguishable compared to its comparison schools. It is important to note that averaging achievement scores across subjects masks any variation in school performance between subject areas. As a result, the table below also includes the school’s effect on student achievement in each subject area.

Grade Level and Subject	Value-Added (Controls for Student Demographics and Prior Test Scores)					
	School Effect	State Percentile (higher is better)	Statistically Different from State Average?	School Comparison Rank (lower is better)	School Comparison Weighted Average	Statistically Different from School Comparison Average?
<i>Elementary</i>						
ELA	-0.031	37	No	54 out of 55	0.139	No
Math	-0.026	43	No	53 out of 55	0.180	No
All-Subject Average	-0.031	40	No	54 out of 55	0.162	Lower
<i>Middle</i>						
ELA	0.331	99	Higher	1 out of 26	0.087	Higher
Math	0.264	98	Higher	6 out of 26	0.153	No
All-Subject Average	0.261	99	Higher	2 out of 26	0.114	No

Note. Statistical significance is based on a 95 percent confidence level. The state average value-added effect is zero. The school comparison weighted average represents a weighted average of performance of the schools in the relevant grouping for this school, weighted by the share of students in this charter who would have attended.

### SGP Results Summary by Grade Level and Subject

Grade Level and Subject	Student Growth Percentiles (Controls only for Prior Test Scores)							
	School Mean of Individual SGPs	State Percentile (higher is better)	School Comparison Rank (lower is better)	School Comparison Weighted Average SGP	Share of students 1-29	Share of students 30-40	Share of students 41-65	Share of students 66-99
<i>Elementary</i>								
ELA	48.6	39	41 out of 55	52.1	0.33	0.14	0.24	0.29
Math	47.8	42	42 out of 55	52.4	0.24	0.05	0.57	0.14
All-Subject Average	48.4	40	52 out of 55	57.1	0.29	0.14	0.33	0.24
<i>Middle</i>								
ELA	63.3	97	1 out of 26	48.3	0.16	0.00	0.32	0.53
Math	55.0	77	4 out of 26	48.3	0.20	0.05	0.25	0.50
All-Subject Average	63.6	94	1 out of 26	53.1	0.16	0.05	0.16	0.63

### 2021 Gap-Year Value Added Estimates

For comparison purposes, estimates from 2021 gap-year value added are presented below.

Grade Level and Subject	Student Growth Percentiles (Controls only for Prior Test Scores)							
	School Mean of Individual SGPs	State Percentile (higher is better)	School Comparison Rank (lower is better)	School Comparison Weighted Average SGP	Share of students 1-29	Share of students 30-40	Share of students 41-65	Share of students 66-99
<i>Middle</i>								
ELA	0.0945	82	No	1 out of 26	-0.0922	No	0.429	0.257
Math	0.0682	71	No	1 out of 26	-0.1260	No	0.424	0.061
All-Subject Average	0.0741	75	No	1 out of 26	-0.1059	No	0.229	0.200

Note. Statistical significance is based on a 95 percent confidence level. The state average value-added effect is zero. The attendance-zone average represents the simple average of the school effects of all schools in the relevant grouping for this school. There were too few test takers at the elementary grades to calculate performance measures.



## Liberty Tech Charter School

### General Characteristics

School Name	Calendar Year Opened	ESP Affiliation	Grades Served	School Model	Attendance Zone
Liberty Tech Charter School	2016	No	K-8	Classical/STEM hybrid, House System to learn college and career readiness, physical education daily; Extended Year: 210 days	Statewide

### Students Served

School Name	Female	White	Black	Hispanic	Other Race	FRL	Direct Cert	LEP	SWD
Liberty Tech	49.9	61.9	22.8	7.2	8.1	11.5	10.4	0.3	14.6

Note. All data are reported percentages (% omitted)

### Value-Added Results Summary by Grade Level and Subject

Liberty Tech’s contribution to an elementary student’s cross-subject average achievement is indistinguishable from that of the state and relative its school comparison group. Its contribution to a middle school student’s average achievement in ELA and Math is statistically indistinguishable from the state average and relative to its comparison schools. It is important to note that averaging achievement scores across subjects masks any variation in school performance between subject areas. As a result, the table below also includes the school’s effect on student achievement in each subject area.

Grade Level and Subject	Value-Added (Controls for Student Demographics and Prior Test Scores)					
	School Effect	State Percentile (higher is better)	Statistically Different from State Average?	School Comparison Rank (lower is better)	School Comparison Weighted Average	Statistically Different from School Comparison Average?
<i>Elementary</i>						
ELA	-0.016	44	No	28 out of 49	0.006	No
Math	-0.157	12	Lower	43 out of 49	0.002	Lower
All-Subject Average	-0.066	27	No	37 out of 49	0.007	No
<i>Middle</i>						
ELA	-0.002	49	No	14 out of 23	0.044	No
Math	0.066	72	No	6 out of 23	0.014	No
All-Subject Average	0.044	67	No	9 out of 23	0.032	No

Note. Statistical significance is based on a 95 percent confidence level. The state average value-added effect is zero. The school comparison weighted average represents a weighted average of performance of the schools in the relevant grouping for this school, weighted by the share of students in this charter who would have attended.

### SGP Results Summary by Grade Level and Subject

Grade Level and Subject	Student Growth Percentiles (Controls only for Prior Test Scores)							
	School Mean of Individual SGPs	State Percentile (higher is better)	School Comparison Rank (lower is better)	School Comparison Weighted Average SGP	Share of students 1-29	Share of students 30-40	Share of students 41-65	Share of students 66-99
<i>Elementary</i>								
ELA	52.6	66	20 out of 49	50.8	0.21	0.13	0.25	0.42
Math	43.1	23	39 out of 49	49.7	0.34	0.11	0.32	0.23
All-Subject Average	47.0	32	34 out of 49	51.0	0.26	0.11	0.38	0.25
<i>Middle</i>								
ELA	49.4	51	13 out of 23	52.9	0.32	0.05	0.25	0.39
Math	59.4	90	3 out of 23	52.9	0.18	0.11	0.32	0.39
All-Subject Average	57.0	78	4 out of 23	53.3	0.22	0.09	0.27	0.42

### 2021 Gap-Year Value Added Estimates

For comparison purposes, estimates from 2021 gap-year value added are presented below.

Grade Level and Subject	2021 Gap-Year Value-Added (Controls for Student Demographics and Prior Test Scores)					
	School Effect	State Percentile (higher is better)	Statistically Different from State Average?	School Comparison Rank (lower is better)	School Comparison Average	Statistically Different from School Comparison Average?
<i>Elementary</i>						
ELA	-0.4611	1	Lower	50 out of 50	-0.0466	Lower
Math	-0.3017	11	Lower	41 out of 50	-0.1054	No
All-Subject Average	-0.3547	2	Lower	50 out of 50	-0.0717	Lower
<i>Middle</i>						
ELA	0.1144	85	No	2 out of 25	-0.0335	No
Math	0.0271	60	No	6 out of 25	-0.0621	No
All-Subject Average	0.0917	79	No	3 out of 25	-0.0333	No

Note. Statistical significance is based on a 95 percent confidence level. The state average value-added effect is zero. The attendance-zone average represents the simple average of the school effects of all schools in the relevant grouping for this school.

## Northwest Classical

### General Characteristics

School Name	Calendar Year Opened	ESP Affiliation	Grades Served	School Model	Attendance Zone
Northwest Classical	2021	Liberty Classical Schools	K-8	Classical Education Model	Statewide

### Students Served

School Name	Female	White	Black	Hispanic	Other Race	FRL	Direct Cert	LEP	SWD
Northwest Classical	48.4	60.1	19	11.7	9.2	0	7.7	2.8	9.9

Note. All data are reported percentages (% omitted)

### Value-Added Results Summary by Grade Level and Subject

Northwest Classical’s contribution to an elementary student’s cross-subject average achievement is lower from that of the average elementary school in the state and its school comparison group. Its contribution to a middle school student’s cross-subject average achievement is indistinguishable from that of the average middle school in the state and its school comparison group. It is important to note that averaging achievement scores across subjects masks any variation in school performance between subject areas. As a result, the table below also includes the school’s effect on student achievement in each subject area.

Grade Level and Subject	Value-Added (Controls for Student Demographics and Prior Test Scores)					
	School Effect	State Percentile (higher is better)	Statistically Different from State Average?	School Comparison Rank (lower is better)	School Comparison Weighted Average	Statistically Different from School Comparison Average?
<i>Elementary</i>						
ELA	-0.128	11	No	56 out of 60	-0.017	No
Math	-0.145	13	Lower	55 out of 60	-0.012	No
All-Subject Average	-0.123	11	Lower	55 out of 60	-0.008	Lower
<i>Middle</i>						
ELA	0.001	50	No	18 out of 24	0.034	No
Math	-0.097	22	No	22 out of 24	0.081	Lower
All-Subject Average	-0.046	34	No	20 out of 24	0.063	No

Note. Statistical significance is based on a 95 percent confidence level. The state average value-added effect is zero. The school comparison weighted average represents a weighted average of performance of the schools in the relevant grouping for this school, weighted by the share of students in this charter who would have attended.

SGP Results Summary by Grade Level and Subject

Grade Level and Subject	Student Growth Percentiles (Controls only for Prior Test Scores)							
	School Mean of Individual SGPs	State Percentile (higher is better)	School Comparison Rank (lower is better)	School Comparison Weighted Average SGP	Share of students 1-29	Share of students 30-40	Share of students 41-65	Share of students 66-99
<i>Elementary</i>								
ELA	45.3	24	52 out of 60	50.7	0.33	0.15	0.28	0.24
Math	43.9	25	54 out of 60	52.1	0.39	0.13	0.22	0.26
All-Subject Average	42.7	18	55 out of 60	51.7	0.43	0.11	0.28	0.19
<i>Middle</i>								
ELA	48.8	45	19 out of 24	52.6	0.23	0.26	0.26	0.26
Math	53.3	70	15 out of 24	52.6	0.19	0.19	0.25	0.38
All-Subject Average	49.9	48	20 out of 24	56.1	0.26	0.19	0.13	0.42

2021 Gap-Year Value Added Estimates

2021 gap-year value added are not available for Northwest Classical.

## Odyssey School

### General Characteristics

School Name	Calendar Year Opened	ESP Affiliation	Grades Served	School Model	Attendance Zone
Odyssey School	2004	No	K-8	Multi-age classrooms - students grouped by skill level/Looping: students remain with teacher two years	Coweta County

### Students Served

School Name	Female	White	Black	Hispanic	Other Race	FRL	Direct Cert	LEP	SWD
Odyssey	51.3	44.1	38.4	10	7.5	37.8	18.1	2.8	10

Note. All data are reported percentages (% omitted)

### Value-Added Results Summary by Grade Level and Subject

Odyssey School’s contribution to an elementary student’s average achievement across ELA and Math is indistinguishable from the average elementary school in the state but lower relative to its comparison schools. Its contribution to a middle school student’s average achievement is indistinguishable from the average middle school in the state and relative to its comparison schools. It is important to note that averaging achievement scores across subjects masks any variation in school performance between subject areas. As a result, the table below also includes the school’s effect on student achievement in each subject area.

Grade Level and Subject	Value-Added (Controls for Student Demographics and Prior Test Scores)					
	School Effect	State Percentile (higher is better)	Statistically Different from State Average?	School Comparison Rank (lower is better)	School Comparison Weighted Average	Statistically Different from School Comparison Average?
<i>Elementary</i>						
ELA	-0.067	27	No	13 out of 18	0.025	No
Math	-0.127	16	No	15 out of 18	0.051	Lower
All-Subject Average	-0.075	24	No	13 out of 18	0.042	Lower
<i>Middle</i>						
ELA	0.042	67	No	2 out of 9	-0.028	No
Math	0.052	69	No	3 out of 9	-0.017	No
All-Subject Average	0.065	76	No	3 out of 9	-0.011	No

Note. Statistical significance is based on a 95 percent confidence level. The state average value-added effect is zero. The school comparison weighted average represents a weighted average of performance of the schools in the relevant grouping for this school, weighted by the share of students in this charter who would have attended.

### SGP Results Summary by Grade Level and Subject

Grade Level and Subject	Student Growth Percentiles (Controls only for Prior Test Scores)							
	School Mean of Individual SGPs	State Percentile (higher is better)	School Comparison Rank (lower is better)	School Comparison Weighted Average SGP	Share of students 1-29	Share of students 30-40	Share of students 41-65	Share of students 66-99
<i>Elementary</i>								
ELA	51.5	60	6 out of 18	51.2	0.25	0.15	0.27	0.33
Math	48.1	43	10 out of 18	52.6	0.27	0.15	0.35	0.23
All-Subject Average	50.9	53	9 out of 18	52.8	0.25	0.12	0.35	0.29
<i>Middle</i>								
ELA	55.7	84	1 out of 9	49.1	0.18	0.12	0.32	0.38
Math	57.7	85	2 out of 9	49.1	0.18	0.12	0.27	0.43
All-Subject Average	58.6	84	1 out of 9	50.5	0.15	0.17	0.24	0.44

### 2021 Gap-Year Value Added Estimates

For comparison purposes, estimates from 2021 gap-year value added are presented below.

Grade Level and Subject	2021 Gap-Year Value-Added (Controls for Student Demographics and Prior Test Scores)					
	School Effect	State Percentile (higher is better)	Statistically Different from State Average?	School Comparison Rank (lower is better)	School Comparison Average	Statistically Different from School Comparison Average?
<i>Elementary</i>						
ELA	-0.2119	8	Lower	20 out of 22	-0.0264	Lower
Math	-0.3764	6	Lower	19 out of 22	-0.1016	Lower
All-Subject Average	-0.2789	5	Lower	21 out of 22	-0.0601	Lower
<i>Middle</i>						
ELA	0.0400	65	No	2 out of 9	-0.0642	No
Math	-0.0926	25	No	4 out of 9	-0.1348	No
All-Subject Average	-0.0174	47	No	3 out of 9	-0.0913	No

Note. Statistical significance is based on a 95 percent confidence level. The state average value-added effect is zero. The attendance-zone average represents the simple average of the school effects of all schools in the relevant grouping for this school.

## Pataula Charter Academy

### General Characteristics

School Name	Calendar Year Opened	ESP Affiliation	Grades Served	School Model	Attendance Zone
Pataula Charter Academy	2010	No	K-12	Expeditionary Learning: project-based lectures and curriculum delivery/Looping: students remain with teacher for two years	Baker, Calhoun, Clay, Early, Miller, Randolph, and Terrell

### Students Served

School Name	Female	White	Black	Hispanic	Other Race	FRL	Direct Cert	LEP	SWD
Pataula	49.2	64.3	27.4	5.2	3.1	52	30.4	0.5	11.9

Note. All data are reported percentages (% omitted)

### Value-Added Results Summary by Grade Level and Subject

Pataula Charter Academy’s contribution to a student’s average achievement across subjects is indistinguishable from the average elementary school in the state and school comparison group. For middle grades it performed higher than the average school in the state, but similar to the average school in the school comparison group. For high school grades, it performed similar to the average high school in the state, but lower than the average comparison school. It is important to note that averaging achievement scores across subjects masks any variation in school performance between subject areas. As a result, the table below also includes the school’s effect on student achievement in each subject area.

Grade Level and Subject	Value-Added (Controls for Student Demographics and Prior Test Scores)					
	School Effect	State Percentile (higher is better)	Statistically Different from State Average?	School Comparison Rank (lower is better)	School Comparison Weighted Average	Statistically Different from School Comparison Average?
<i>Elementary</i>						
ELA	-0.029	39	No	5 out of 8	-0.061	No
Math	0.045	66	No	3 out of 8	0.056	No
All-Subject Average	0.037	65	No	4 out of 8	0.000	No
<i>Middle</i>						
ELA	0.167	96	Higher	3 out of 8	0.075	No
Math	-0.015	46	No	6 out of 8	0.102	No
All-Subject Average	0.116	90	Higher	4 out of 8	0.083	No
<i>High</i>						

	Value-Added (Controls for Student Demographics and Prior Test Scores)					
Grade Level and Subject	School Effect	State Percentile (higher is better)	Statistically Different from State Average?	School Comparison Rank (lower is better)	School Comparison Weighted Average	Statistically Different from School Comparison Average?
American Literature	0.189	97	Higher	2 out of 8	0.138	No
Algebra 1	-0.223	19	Lower	6 out of 8	0.204	Lower
All-Subject Average	-0.022	45	No	6 out of 8	0.166	Lower

Note. Statistical significance is based on a 95 percent confidence level. The state average value-added effect is zero. The school comparison weighted average represents a weighted average of performance of the schools in the relevant grouping for this school, weighted by the share of students in this charter who would have attended.

### SGP Results Summary by Grade Level and Subject

	Student Growth Percentiles (Controls only for Prior Test Scores)							
Grade Level and Subject	School Mean of Individual SGPs	State Percentile (higher is better)	School Comparison Rank (lower is better)	School Comparison Weighted Average SGP	Share of students 1-29	Share of students 30-40	Share of students 41-65	Share of students 66-99
<i>Elementary</i>								
ELA	50.5	53	2 out of 8	44.2	0.30	0.06	0.27	0.38
Math	51.7	59	3 out of 8	46.8	0.27	0.11	0.29	0.33
All-Subject Average	52.6	60	3 out of 8	47.0	0.28	0.10	0.21	0.41
<i>Middle</i>								
ELA	55.9	84	3 out of 8	50.9	0.18	0.12	0.23	0.47
Math	49.7	55	5 out of 8	50.9	0.23	0.11	0.26	0.40
All-Subject Average	56.7	77	4 out of 8	53.1	0.15	0.13	0.31	0.41
<i>High</i>								
American Literature	58.2	87	3 out of 8	44.6	0.18	0.10	0.18	0.54
Algebra 1	37.8	17	6 out of 8	39.1	0.42	0.16	0.29	0.13
All-Subject Average	51.4	63	3 out of 8	45.0	0.30	0.13	0.23	0.34

### 2021 Gap-Year Value Added Estimates



For comparison purposes, estimates from 2021 gap-year value added are presented below.

Grade Level and Subject	2021 Gap-Year Value-Added (Controls for Student Demographics and Prior Test Scores)					
	School Effect	State Percentile (higher is better)	Statistically Different from State Average?	School Comparison Rank (lower is better)	School Comparison Average	Statistically Different from School Comparison Average?
<i>Elementary</i>						
ELA	-0.4409	1	Lower	9 out of 9	0.0101	Lower
Math	-0.4332	3	Lower	9 out of 9	-0.0258	Lower
All-Subject Average	-0.3994	1	Lower	9 out of 9	-0.0142	Lower
<i>Middle</i>						
ELA	-0.3772	1	Lower	10 out of 10	-0.0054	Lower
Math	-0.2763	3	Lower	10 out of 10	0.0391	Lower
All-Subject Average	-0.2612	1	Lower	10 out of 10	0.0118	Lower

*Note.* Statistical significance is based on a 95 percent confidence level. The state average value-added effect is zero. The attendance-zone average represents the simple average of the school effects of all schools in the relevant grouping for this school. There were too few test takers in high-school grades to calculate performance measures.

## Resurgence Hall

### General Characteristics

School Name	Calendar Year Opened	ESP Affiliation	Grades Served	School Model	Attendance Zone
Resurgence Hall	2017	No	K-3	Emphasis on computer science, design-thinking and literacy and use of blended learning; Extended Day/Year	Atlanta Public Schools and Fulton County

### Students Served

School Name	Female	White	Black	Hispanic	Other Race	FRL	Direct Cert	LEP	SWD
Resurgence Hall	51.2	1.3	95.6	2.6	0.5	68	32.8	0.5	7.8

Note. All data are reported percentages (% omitted)

### Value-Added Results Summary by Grade Level and Subject

Resurgence Hall’s contribution to an elementary student’s average achievement across subjects is indistinguishable from the state average but lower relative to its comparison schools. It is important to note that averaging achievement scores across subjects masks any variation in school performance between subject areas. As a result, the table below also includes the school’s effect on student achievement in each subject area.

Grade Level and Subject	Value-Added (Controls for Student Demographics and Prior Test Scores)					
	School Effect	State Percentile (higher is better)	Statistically Different from State Average?	School Comparison Rank (lower is better)	School Comparison Weighted Average	Statistically Different from School Comparison Average?
<i>Elementary</i>						
ELA	0.050	69	No	31 out of 39	0.150	No
Math	0.030	61	No	32 out of 39	0.192	Lower
All-Subject Average	0.003	51	No	34 out of 39	0.152	Lower

Note. Statistical significance is based on a 95 percent confidence level. The state average value-added effect is zero. The school comparison weighted average represents a weighted average of performance of the schools in the relevant grouping for this school, weighted by the share of students in this charter who would have attended.

### SGP Results Summary by Grade Level and Subject

Grade Level and Subject	Student Growth Percentiles (Controls only for Prior Test Scores)							
	School Mean of Individual SGPs	State Percentile (higher is better)	School Comparison Rank (lower is better)	School Comparison Weighted Average SGP	Share of students 1-29	Share of students 30-40	Share of students 41-65	Share of students 66-99
<i>Elementary</i>								
ELA	47.8	34	29 out of 39	52.4	0.35	0.12	0.20	0.33
Math	48.8	46	25 out of 39	53.2	0.29	0.08	0.31	0.32
All-Subject Average	45.9	28	35 out of 39	56.1	0.33	0.07	0.32	0.28

### 2021 Gap-Year Value Added Estimates

2021 gap-year value added are not available for Resurgence Hall.

## SAIL – School for Arts-Infused Learning

### General Characteristics

School Name	Calendar Year Opened	ESP Affiliation	Grades Served	School Model	Attendance Zone
SAIL – School for Arts-Infused Learning	2017	No	K-8	Arts-infused learning with robust fine arts and foreign language program, multiple year looping	Statewide

### Students Served

School Name	Female	White	Black	Hispanic	Other Race	FRL	Direct Cert	LEP	SWD
SAIL	58.6	62.3	16.3	13.6	7.8	15	9.8	1.5	13.7

Note. All data are reported percentages (% omitted)

### Value-Added Results Summary by Grade Level and Subject

SAIL’s contribution to an elementary student’s average achievement across ELA and Math is lower than the average elementary school in the state and school comparison group. Its contribution to a middle school student’s cross-subject average achievement is lower than the state average and to its comparison schools. It is important to note that averaging achievement scores across subjects masks any variation in school performance between subject areas. As a result, the table below also includes the school’s effect on student achievement in each subject area.

Grade Level and Subject	Value-Added (Controls for Student Demographics and Prior Test Scores)					
	School Effect	State Percentile (higher is better)	Statistically Different from State Average?	School Comparison Rank (lower is better)	School Comparison Weighted Average	Statistically Different from School Comparison Average?
<i>Elementary</i>						
ELA	-0.073	25	No	27 out of 35	0.019	No
Math	-0.341	1	Lower	35 out of 35	0.003	Lower
All-Subject Average	-0.194	4	Lower	35 out of 35	0.008	Lower
<i>Middle</i>						
ELA	-0.201	2	Lower	18 out of 20	-0.109	No
Math	-0.362	1	Lower	20 out of 20	-0.088	Lower
All-Subject Average	-0.252	1	Lower	20 out of 20	-0.092	Lower

Note. Statistical significance is based on a 95 percent confidence level. The state average value-added effect is zero. The school comparison weighted average represents a weighted average of performance of the schools in the relevant grouping for this school, weighted by the share of students in this charter who would have attended.

### SGP Results Summary by Grade Level and Subject

Grade Level and Subject	Student Growth Percentiles (Controls only for Prior Test Scores)							
	School Mean of Individual SGPs	State Percentile (higher is better)	School Comparison Rank (lower is better)	School Comparison Weighted Average SGP	Share of students 1-29	Share of students 30-40	Share of students 41-65	Share of students 66-99
<i>Elementary</i>								
ELA	49.6	47	21 out of 35	51.3	0.31	0.11	0.27	0.32
Math	37.7	10	33 out of 35	48.1	0.43	0.11	0.32	0.14
All-Subject Average	40.8	13	31 out of 35	49.7	0.35	0.17	0.29	0.19
<i>Middle</i>								
ELA	43.9	17	11 out of 20	45.5	0.37	0.11	0.28	0.24
Math	38.7	13	14 out of 20	45.5	0.43	0.11	0.25	0.20
All-Subject Average	38.4	8	18 out of 20	45.3	0.46	0.21	0.10	0.23

### 2021 Gap-Year Value Added Estimates

For comparison purposes, estimates from 2021 gap-year value added are presented below.

Grade Level and Subject	2021 Gap-Year Value-Added (Controls for Student Demographics and Prior Test Scores)					
	School Effect	State Percentile (higher is better)	Statistically Different from State Average?	School Comparison Rank (lower is better)	School Comparison Average	Statistically Different from School Comparison Average?
<i>Elementary</i>						
ELA	0.0224	56	No	23 out of 41	0.0326	No
Math	-0.1499	27	No	33 out of 41	0.0144	Lower
All-Subject Average	-0.0414	41	No	31 out of 41	0.0301	No
<i>Middle</i>						
ELA	-0.0661	25	No	15 out of 20	0.0163	No
Math	-0.4414	1	Lower	20 out of 20	-0.0234	Lower
All-Subject Average	-0.2266	2	Lower	20 out of 20	0.0019	Lower

Note. Statistical significance is based on a 95 percent confidence level. The state average value-added effect is zero. The attendance-zone average represents the simple average of the school effects of all schools in the relevant grouping for this school.

## Scintilla Charter Academy

### General Characteristics

School Name	Calendar Year Opened	ESP Affiliation	Grades Served	School Model	Attendance Zone
Scintilla Charter Academy	2015	No	K-6	Project-based learning with emphasis on service learning	Brooks, Lowndes, Valdosta City

### Students Served

School Name	Female	White	Black	Hispanic	Other Race	FRL	Direct Cert	LEP	SWD
Scintilla	49.9	56.7	29.1	5.5	8.7	21.6	18.3	0.7	13.5

Note. All data are reported percentages (% omitted)

### Value-Added Results Summary by Grade Level and Subject

Scintilla Charter Academy’s contribution to an elementary student’s average achievement across ELA and Math is similar to the state average and its school comparison group. Its contribution to a middle school student’s average achievement across ELA and Math is similar to the state average, but higher relative to its comparison schools. It is important to note that averaging achievement scores across subjects masks any variation in school performance between subject areas. As a result, the table below also includes the school’s effect on student achievement in each subject area.

Grade Level and Subject	Value-Added (Controls for Student Demographics and Prior Test Scores)					
	School Effect	State Percentile (higher is better)	Statistically Different from State Average?	School Comparison Rank (lower is better)	School Comparison Weighted Average	Statistically Different from School Comparison Average?
<i>Elementary</i>						
ELA	0.073	77	No	2 out of 15	-0.015	Higher
Math	0.017	57	No	7 out of 15	-0.013	No
All-Subject Average	0.028	61	No	4 out of 15	-0.020	No
<i>Middle</i>						
ELA	0.081	80	No	1 out of 8	-0.016	No
Math	0.126	87	No	2 out of 8	0.005	No
All-Subject Average	0.096	86	No	1 out of 8	-0.013	Higher

Note. Statistical significance is based on a 95 percent confidence level. The state average value-added effect is zero. The school comparison weighted average represents a weighted average of performance of the schools in the relevant grouping for this school, weighted by the share of students in this charter who would have attended.

### SGP Results Summary by Grade Level and Subject

Grade Level and Subject	Student Growth Percentiles (Controls only for Prior Test Scores)							
	School Mean of Individual SGPs	State Percentile (higher is better)	School Comparison Rank (lower is better)	School Comparison Weighted Average SGP	Share of students 1-29	Share of students 30-40	Share of students 41-65	Share of students 66-99
<i>Elementary</i>								
ELA	50.6	53	3 out of 15	47.1	0.27	0.13	0.26	0.35
Math	49.8	51	7 out of 15	45.7	0.28	0.11	0.25	0.36
All-Subject Average	48.2	39	9 out of 15	45.8	0.30	0.16	0.17	0.37
<i>Middle</i>								
ELA	56.8	87	1 out of 8	47.4	0.17	0.11	0.32	0.40
Math	60.7	92	1 out of 8	47.4	0.11	0.09	0.32	0.47
All-Subject Average	60.0	87	1 out of 8	46.9	0.09	0.17	0.28	0.45

### 2021 Gap-Year Value Added Estimates

For comparison purposes, estimates from 2021 gap-year value added are presented below.

Grade Level and Subject	2021 Gap-Year Value-Added (Controls for Student Demographics and Prior Test Scores)					
	School Effect	State Percentile (higher is better)	Statistically Different from State Average?	School Comparison Rank (lower is better)	School Comparison Average	Statistically Different from School Comparison Average?
<i>Elementary</i>						
ELA	0.3790	99	Higher	1 out of 14	0.1199	Higher
Math	0.4270	96	Higher	4 out of 14	0.2630	Higher
All-Subject Average	0.4295	99	Higher	2 out of 14	0.1882	Higher
<i>Middle</i>						
ELA	0.1786	95	Higher	3 out of 8	0.1023	No
Math	0.4309	99	Higher	1 out of 8	0.1438	Higher
All-Subject Average	0.3175	99	Higher	1 out of 8	0.1168	Higher

Note. Statistical significance is based on a 95 percent confidence level. The state average value-added effect is zero. The attendance-zone average represents the simple average of the school effects of all schools in the relevant grouping for this school.

## SLAM Academy of Atlanta

### General Characteristics

School Name	Calendar Year Opened	ESP Affiliation	Grades Served	School Model	Attendance Zone
SLAM Academy of Atlanta	2018	SLAM Foundation, Inc.	K-5	Sports-themed, STEM program in elementary grades (K-5), Career-oriented model in secondary grades (6-7)	Atlanta Public Schools

### Students Served

School Name	Female	White	Black	Hispanic	Other Race	FRL	Direct Cert	LEP	SWD
SLAM	43.8	0	96.9	3.1	0	95.3	66.3	0	6.3

Note. All data are reported percentages (% omitted)

### Value-Added Results Summary by Grade Level and Subject

SLAM Academy’s contribution to a student’s average achievement across ELA and Math is similar to the state average but lower relative to its school comparison group. It is important to note that averaging achievement scores across subjects masks any variation in school performance between subject areas. As a result, the table below also includes the school’s effect on student achievement in each subject area.

Grade Level and Subject	Value-Added (Controls for Student Demographics and Prior Test Scores)					
	School Effect	State Percentile (higher is better)	Statistically Different from State Average?	School Comparison Rank (lower is better)	School Comparison Weighted Average	Statistically Different from School Comparison Average?
<i>Elementary</i>						
ELA	-0.075	25	No	19 out of 21	0.130	No
Math	-0.325	2	Lower	21 out of 21	0.162	Lower
All-Subject Average	-0.185	4	No	21 out of 21	0.142	Lower

Note. Statistical significance is based on a 95 percent confidence level. The state average value-added effect is zero. The school comparison weighted average represents a weighted average of performance of the schools in the relevant grouping for this school, weighted by the share of students in this charter who would have attended.

### SGP Results Summary by Grade Level and Subject

Grade Level and Subject	Student Growth Percentiles (Controls only for Prior Test Scores)							
	School Mean of Individual SGPs	State Percentile (higher is better)	School Comparison Rank (lower is better)	School Comparison Weighted Average SGP	Share of students 1-29	Share of students 30-40	Share of students 41-65	Share of students 66-99
<i>Elementary</i>								
ELA	55.1	79	6 out of 21	48.5	0.29	0.14	0.29	0.29
Math	23.8	1	21 out of 21	49.1	0.64	0.14	0.07	0.14
All-Subject Average	39.7	10	18 out of 21	52.5	0.36	0.14	0.50	0.00



### 2021 Gap-Year Value Added Estimates

2021 gap-year value added are not available for SLAM Academy of Atlanta.

## Southwest Georgia STEM Charter

### General Characteristics

School Name	Calendar Year Opened	ESP Affiliation	Grades Served	School Model	Attendance Zone
Southwest Georgia STEM Charter	2016	No	PK-9	Interdisciplinary, place-based paired with STEM	Statewide

### Students Served

School Name	Female	White	Black	Hispanic	Other Race	FRL	Direct Cert	LEP	SWD
Southwest GA	49.3	74.9	14.2	7.1	3.8	51.5	49.5	0	13.7

Note. All data are reported percentages (% omitted)

### Value-Added Results Summary by Grade Level and Subject

Southwest Georgia STEM Charter’s contribution to a student’s average achievement across subjects in elementary, middle, and high school is indistinguishable from the average elementary, middle, or high school in the state and relative to its school comparison group. It is important to note that averaging achievement scores across subjects masks any variation in school performance between subject areas. As a result, the table below also includes the school’s effect on student achievement in each subject area.

Grade Level and Subject	Value-Added (Controls for Student Demographics and Prior Test Scores)					
	School Effect	State Percentile (higher is better)	Statistically Different from State Average?	School Comparison Rank (lower is better)	School Comparison Weighted Average	Statistically Different from School Comparison Average?
<i>Elementary</i>						
ELA	-0.045	34	No	7 out of 11	0.007	No
Math	-0.006	49	No	6 out of 11	0.051	No
All-Subject Average	-0.037	37	No	7 out of 11	0.027	No
<i>Middle</i>						
ELA	0.071	77	No	6 out of 12	0.118	No
Math	0.056	69	No	7 out of 12	0.083	No
All-Subject Average	0.069	79	No	6 out of 12	0.093	No

Value-Added (Controls for Student Demographics and Prior Test Scores)						
Grade Level and Subject	School Effect	State Percentile (higher is better)	Statistically Different from State Average?	School Comparison Rank (lower is better)	School Comparison Weighted Average	Statistically Different from School Comparison Average?
<i>High</i>						
American Literature						
Algebra 1	0.023	56	No	4 out of 4	0.064	No
All-Subject Average	-0.144	15	No	6 out of 6	0.101	No

Note. Statistical significance is based on a 95 percent confidence level. The state average value-added effect is zero. The school comparison weighted average represents a weighted average of performance of the schools in the relevant grouping for this school, weighted by the share of students in this charter who would have attended.

### SGP Results Summary by Grade Level and Subject

Student Growth Percentiles (Controls only for Prior Test Scores)								
Grade Level and Subject	School Mean of Individual SGPs	State Percentile (higher is better)	School Comparison Rank (lower is better)	School Comparison Weighted Average SGP	Share of students 1-29	Share of students 30-40	Share of students 41-65	Share of students 66-99
<i>Elementary</i>								
ELA	39.6	6	10 out of 11	47.5	0.37	0.23	0.25	0.16
Math	44.9	29	7 out of 11	47.1	0.32	0.12	0.35	0.21
All-Subject Average	40.7	12	8 out of 11	49.1	0.39	0.14	0.32	0.16
<i>Middle</i>								
ELA	53.1	72	5 out of 12	52.9	0.32	0.07	0.19	0.41
Math	51.8	66	4 out of 12	52.9	0.26	0.09	0.24	0.41
All-Subject Average	54.1	67	5 out of 12	52.5	0.19	0.14	0.27	0.40
<i>High</i>								
American Literature								
Algebra 1	43.0	32	3 out of 4	25.7	0.36	0.18	0.23	0.23
All-Subject Average	43.0	22	4 out of 6	46.2	0.36	0.18	0.23	0.23

### 2021 Gap-Year Value Added Estimates

For comparison purposes, estimates from 2021 gap-year value added are presented below.

Grade Level and Subject	2021 Gap-Year Value-Added (Controls for Student Demographics and Prior Test Scores)					
	School Effect	State Percentile (higher is better)	Statistically Different from State Average?	School Comparison Rank (lower is better)	School Comparison Average	Statistically Different from School Comparison Average?
<i>Elementary</i>						
ELA	-0.1777	11	No	11 out of 11	0.0234	No
Math	-0.0348	45	No	6 out of 11	-0.0214	No
All-Subject Average	-0.0926	29	No	8 out of 11	-0.0046	No
<i>Middle</i>						
ELA	0.1774	95	Higher	1 out of 10	-0.0372	Higher
Math	0.0358	63	No	4 out of 10	0.0167	No
All-Subject Average	0.1210	84	Higher	2 out of 10	-0.0225	Higher
<i>High</i>						
American Literature						
Algebra 1	-0.0726	38	No	2 out of 6	-0.2468	No
All Subject Average						

Note. Statistical significance is based on a 95 percent confidence level. The state average value-added effect is zero. The attendance-zone average represents the simple average of the school effects of all schools in the relevant grouping for this school.

## Spring Creek Charter Academy

### General Characteristics

School Name	Calendar Year Opened	ESP Affiliation	Grades Served	School Model	Attendance Zone
Spring Creek Charter Academy	2019	No	K-7	Project-based learning	Decatur, Miller, Seminole

### Students Served

School Name	Female	White	Black	Hispanic	Other Race	FRL	Direct Cert	LEP	SWD
Spring Creek	48.8	66.6	23.6	6	3.8	54.8	29	0.8	9.6

Note. All data are reported percentages (% omitted)

### Value-Added Results Summary by Grade Level and Subject

Spring Creek’s contribution to an elementary student’s average achievement across subjects is indistinguishable from the state average, but statistically higher relative to its comparison schools. Its contribution to a middle school student’s average achievement across subjects is indistinguishable from the state average and comparison schools. It is important to note that averaging achievement scores across subjects masks any variation in school performance between subject areas. As a result, the table below also includes the school’s effect on student achievement in each subject area.

Grade Level and Subject	Value-Added (Controls for Student Demographics and Prior Test Scores)					
	School Effect	State Percentile (higher is better)	Statistically Different from State Average?	School Comparison Rank (lower is better)	School Comparison Weighted Average	Statistically Different from School Comparison Average?
<i>Elementary</i>						
ELA	0.000	51	No	2 out of 5	-0.102	No
Math	0.132	84	Higher	1 out of 5	-0.138	Higher
All-Subject Average	0.088	80	No	1 out of 5	-0.134	Higher
<i>Middle</i>						
ELA	0.035	64	No	2 out of 7	-0.015	No
Math	-0.089	25	No	4 out of 7	-0.081	No
All-Subject Average	0.001	49	No	2 out of 7	-0.044	No

Note. Statistical significance is based on a 95 percent confidence level. The state average value-added effect is zero. The school comparison weighted average represents a weighted average of performance of the schools in the relevant grouping for this school, weighted by the share of students in this charter who would have attended.

### SGP Results Summary by Grade Level and Subject

Grade Level and Subject	Student Growth Percentiles (Controls only for Prior Test Scores)							
	School Mean of Individual SGPs	State Percentile (higher is better)	School Comparison Rank (lower is better)	School Comparison Weighted Average SGP	Share of students 1-29	Share of students 30-40	Share of students 41-65	Share of students 66-99
<i>Elementary</i>								
ELA	53.7	72	2 out of 5	41.1	0.26	0.13	0.25	0.36
Math	58.9	86	1 out of 5	37.3	0.20	0.10	0.23	0.46
All-Subject Average	58.6	83	1 out of 5	37.0	0.22	0.07	0.25	0.46
<i>Middle</i>								
ELA	52.0	65	2 out of 7	47.9	0.24	0.10	0.30	0.36
Math	49.4	54	3 out of 7	47.9	0.25	0.16	0.27	0.31
All-Subject Average	54.6	69	2 out of 7	45.8	0.24	0.05	0.32	0.39

### 2021 Gap-Year Value Added Estimates

For comparison purposes, estimates from 2021 gap-year value added are presented below.

Grade Level and Subject	2021 Gap-Year Value-Added (Controls for Student Demographics and Prior Test Scores)					
	School Effect	State Percentile (higher is better)	Statistically Different from State Average?	School Comparison Rank (lower is better)	School Comparison Average	Statistically Different from School Comparison Average?
<i>Elementary</i>						
ELA	0.0586	65	No	3 out of 4	0.1045	No
Math	-0.3714	6	Lower	4 out of 4	0.2889	Lower
All-Subject Average	-0.1768	16	Lower	4 out of 4	0.2051	Lower
<i>Middle</i>						
ELA	-0.1425	8	Lower	4 out of 4	0.0613	Lower
Math	-0.3019	2	Lower	4 out of 4	0.0751	Lower
All-Subject Average	-0.2202	2	Lower	4 out of 4	0.0762	Lower

Note. Statistical significance is based on a 95 percent confidence level. The state average value-added effect is zero. The attendance-zone average represents the simple average of the school effects of all schools in the relevant grouping for this school.

## Statesboro STEAM College, Careers, Arts & Technology Academy

### General Characteristics

School Name	Calendar Year Opened	ESP Affiliation	Grades Served	School Model	Attendance Zone
Statesboro STEAM Academy	2002	No	6-12	Multi-age classrooms - students grouped by skill level; Year-round	Bulloch County

### Students Served

School Name	Female	White	Black	Hispanic	Other Race	FRL	Direct Cert	LEP	SWD
Statesboro STEAM	45.8	58.9	34.5	2.4	4.2	49.4	18.7	0	19.6

Note. All data are reported percentages (% omitted)

### Value-Added Results Summary by Grade Level and Subject

Statesboro STEAM’s contribution to a middle school student’s cross-subject average achievement is lower than the average middle school in the state but similar to the school comparison group. Statesboro STEAM’s contribution to a high school student’s cross-subject average achievement is lower than the average high school in the state and lower relative to its comparison schools. It is important to note that averaging achievement scores across subjects masks any variation in school performance between subject areas. As a result, the table below also includes the school’s effect on student achievement in each subject area.

Grade Level and Subject	Value-Added (Controls for Student Demographics and Prior Test Scores)					
	School Effect	State Percentile (higher is better)	Statistically Different from State Average?	School Comparison Rank (lower is better)	School Comparison Weighted Average	Statistically Different from School Comparison Average?
<i>Middle</i>						
ELA	-0.04	34	No	4 out of 7	-0.04	No
Math	-0.24	1	Lower	7 out of 7	-0.05	Lower
All-Subject Average	-0.12	10	Lower	7 out of 7	-0.06	No
<i>High</i>						
American Literature						
Algebra 1	-0.43	1	Lower	4 out of 4	0.06	Lower
All-Subject Average	-0.25	3	Lower	4 out of 4	0.04	Lower

Note. Statistical significance is based on a 95 percent confidence level. The state average value-added effect is zero. The school comparison weighted average represents a weighted average of performance of the schools in the relevant grouping for this school, weighted by the share of students in this charter who would have attended.

### SGP Results Summary by Grade Level and Subject

Grade Level and Subject	Student Growth Percentiles (Controls only for Prior Test Scores)							
	School Mean of Individual SGPs	State Percentile (higher is better)	School Comparison Rank (lower is better)	School Comparison Weighted Average SGP	Share of students 1-29	Share of students 30-40	Share of students 41-65	Share of students 66-99
<i>Middle</i>								
ELA	48.3	41	3 out of 7	43.6	0.28	0.17	0.30	0.25
Math	39.2	13	6 out of 7	43.6	0.42	0.19	0.15	0.24
All-Subject Average	43.5	20	5 out of 7	41.0	0.38	0.10	0.32	0.20
<i>High</i>								
American Literature								
Algebra 1	57.3	74	1 out of 4	44.0	0.50	0.17	0.25	0.08
All-Subject Average	66.0	98	1 out of 4	46.4	0.37	0.11	0.31	0.20

### 2021 Gap-Year Value Added Estimates

For comparison purposes, estimates from 2021 gap-year value added are presented below.

Grade Level and Subject	2021 Gap-Year Value-Added (Controls for Student Demographics and Prior Test Scores)					
	School Effect	State Percentile (higher is better)	Statistically Different from State Average?	School Comparison Rank (lower is better)	School Comparison Average	Statistically Different from School Comparison Average?
<i>Middle</i>						
ELA	-0.0226	42	No	5 out of 6	0.0642	No
Math	-0.1239	20	No	6 out of 6	0.0317	Lower
All-Subject Average	-0.0472	34	No	6 out of 6	0.0428	No
<i>High</i>						
American Literature	0.1349	69	No	4 out of 7	-0.0237	No
Algebra 1	-0.3290	6	Lower	6 out of 6	0.0880	Lower
All Subject Average	-0.1253	24	No	5 out of 7	0.0552	No

Note. Statistical significance is based on a 95 percent confidence level. The state average value-added effect is zero. The attendance-zone average represents the simple average of the school effects of all schools in the relevant grouping for this school.



## Utopian Academy for the Arts

### General Characteristics

School Name	Calendar Year Opened	ESP Affiliation	Grades Served	School Model	Attendance Zone
Utopian Academy for the Arts	2014	No	6-8	Expeditionary Learning Curriculum. Single-gender instructional approach, and classes in the dramatic, media, and culinary arts; Extended Day/Week/Year	Clayton County

### Students Served

School Name	Female	White	Black	Hispanic	Other Race	FRL	Direct Cert	LEP	SWD
Utopian	57.4	0.3	88.5	8	3.2	0	41.7	2.8	14.2

Note. All data are reported percentages (% omitted)

### Value-Added Results Summary by Grade Level and Subject

Utopian Academy for the Art’s contribution to a middle student’s average achievement across all subjects is higher than the state average and its school comparison group. It is important to note that averaging achievement scores across subjects masks any variation in school performance between subject areas. As a result, the table below also includes the school’s effect on student achievement in each subject area.

Grade Level and Subject	Value-Added (Controls for Student Demographics and Prior Test Scores)					
	School Effect	State Percentile (higher is better)	Statistically Different from State Average?	School Comparison Rank (lower is better)	School Comparison Weighted Average	Statistically Different from School Comparison Average?
<i>Middle</i>						
ELA	0.090	83	No	4 out of 27	-0.024	No
Math	0.131	88	Higher	3 out of 27	0.001	Higher
All-Subject Average	0.118	91	Higher	3 out of 27	-0.004	Higher

Note. Statistical significance is based on a 95 percent confidence level. The state average value-added effect is zero. The school comparison weighted average represents a weighted average of performance of the schools in the relevant grouping for this school, weighted by the share of students in this charter who would have attended.

### SGP Results Summary by Grade Level and Subject

Grade Level and Subject	Student Growth Percentiles (Controls only for Prior Test Scores)							
	School Mean of Individual SGPs	State Percentile (higher is better)	School Comparison Rank (lower is better)	School Comparison Weighted Average SGP	Share of students 1-29	Share of students 30-40	Share of students 41-65	Share of students 66-99
<i>Middle</i>								
ELA	53.5	75	2 out of 27	48.4	0.24	0.11	0.24	0.41
Math	55.7	79	2 out of 27	48.4	0.26	0.14	0.21	0.39
All-Subject Average	60.2	88	2 out of 27	50.5	0.20	0.08	0.23	0.48

### 2021 Gap-Year Value Added Estimates

For comparison purposes, estimates from 2021 gap-year value added are presented below.

	2021 Gap-Year Value-Added (Controls for Student Demographics and Prior Test Scores)					
Grade Level and Subject	School Effect	State Percentile (higher is better)	Statistically Different from State Average?	School Comparison Rank (lower is better)	School Comparison Average	Statistically Different from School Comparison Average?
<i>Middle</i>						
ELA	0.1052	84	No	3 out of 31	-0.0501	Higher
Math	-0.2415	5	Lower	28 out of 31	-0.1079	Lower
All-Subject Average	-0.0753	24	No	19 out of 31	-0.0567	No

*Note.* Statistical significance is based on a 95 percent confidence level. The state average value-added effect is zero. The attendance-zone average represents the simple average of the school effects of all schools in the relevant grouping for this school.

## Yi Hwang Academy of Language Excellence

### General Characteristics

School Name	Calendar Year Opened	ESP Affiliation	Grades Served	School Model	Attendance Zone
Yi Hwang Academy of Language Excellence	2020	No	K-5	Language immersion emphasis (Korean, Mandarin)	Statewide

### Students Served

School Name	Female	White	Black	Hispanic	Other Race	FRL	Direct Cert	LEP	SWD
Yi Hwang	49.5	5.1	9.1	7.1	78.7	0	8.2	27.8	3

Note. All data are reported percentages (% omitted)

### Value-Added Results Summary by Grade Level and Subject

Yi Hwang’s contribution to an elementary student’s average achievement across all subjects is similar to the average school in the state but lower relative to its school comparison group. It is important to note that averaging achievement scores across subjects masks any variation in school performance between subject areas. As a result, the table below also includes the school’s effect on student achievement in each subject area.

Grade Level and Subject	Value-Added (Controls for Student Demographics and Prior Test Scores)					
	School Effect	State Percentile (higher is better)	Statistically Different from State Average?	School Comparison Rank (lower is better)	School Comparison Weighted Average	Statistically Different from School Comparison Average?
<i>Elementary</i>						
ELA	-0.095	18	No	33 out of 36	0.025	No
Math	-0.219	6	No	35 out of 36	0.060	Lower
All-Subject Average	-0.173	5	No	34 out of 36	0.034	Lower

Note. Statistical significance is based on a 95 percent confidence level. The state average value-added effect is zero. The school comparison weighted average represents a weighted average of performance of the schools in the relevant grouping for this school, weighted by the share of students in this charter who would have attended.

### SGP Results Summary by Grade Level and Subject

Grade Level and Subject	Student Growth Percentiles (Controls only for Prior Test Scores)							
	School Mean of Individual SGPs	State Percentile (higher is better)	School Comparison Rank (lower is better)	School Comparison Weighted Average SGP	Share of students 1-29	Share of students 30-40	Share of students 41-65	Share of students 66-99
<i>Elementary</i>								
ELA	50.7	54	22 out of 36	52.6	0.36	0.08	0.20	0.36
Math	58.8	85	9 out of 36	55.6	0.25	0.08	0.21	0.46
All-Subject Average	53.5	64	22 out of 36	54.7	0.33	0.08	0.21	0.38

### 2021 Gap-Year Value Added Estimates

2021 gap-year value added are not available for Yi Hwang Academy for Language Excellence.

## IV. References

- Angrist, J. D., Pathak, P. A. & Walters, C R. (2013). "Explaining Charter School Effectiveness." *American Economic Journal: Applied Economics*, 5(4): 1-27.
- American Institutes for Research (2012). 2011-2012 *Growth Model for Educator Evaluation Technical Report: Final*. Available at <http://www.engageny.org/sites/default/files/resource/attachments/growth-model-11-12-air-technical-report.pdf>
- Betebenner, D. (2009). "Norm- and criterion-referenced student growth." *Educational Measurement: Issues and Practice*, 28: 42-51.
- Bifulco, R., & Ladd, H. F. (2006). "The impacts of charter schools on student achievement: Evidence from North Carolina." *Education Finance and Policy*, 1(1): 50-90.
- Booker, K., Gilpatric, S. M., Gronberg, T., & Jansen, D. (2007). "The impact of charter school attendance on student performance." *Journal of Public Economics*, 91(5): 849-876.
- Dee, T., & Wyckoff, J. (2015). "Incentives, Selection and Teacher Performance: Evidence from IMPACT." *Journal of Policy Analysis and Management*, 34(2): 267-297.
- Dobbie, W. & Fryer, R. G. (2011). "Are High-Quality Schools Enough to Increase Achievement Among the Poor? Evidence from the Harlem Children's Zone," *American Economic Journal: Applied Economics* 3(3): 158-187.
- Doran, H., Swanlund, A., & Lemke, M. (2012). *Office of the State Superintendent of Education School-Level Model to Measure Student Achievement over Time: Technical Report*. Available at <http://seo.dc.gov/publication/school-level-model-measure-student-achievement-over-time-technical-report>.
- Ehlert, M., C Koedel, E. Parsons & M. Podgursky (2016). "Selecting Growth Measures for Use in School Evaluation Systems: Should Proportionality Matter?" *Educational Policy* 30(3): 465-500.
- Georgia Department of Education (2010). Georgia Charter School Activity Each Year Since the First Charter School Law Passed in 1993. Available at <http://www.gadoe.org/External-Affairs-and-Policy/Charter-Schools/Pages/default.aspx>.
- Georgia Department of Education (2011). *Chartering in Georgia 2011-2012: The Charter Schools Division Annual Report for 2011 – 2012*. Available at <http://www.gadoe.org/External-Affairs-and-Policy/Charter-Schools/Pages/Annual-Reports.aspx>.
- Georgia Department of Education (2012). *State Charter Schools Commission Briefing*. Powerpoint presentation.
- Georgia Department of Education (2016a). *2015 and 2016 CCRPI – Summary of Changes*. Available at <http://www.gadoe.org/Curriculum-Instruction-and-Assessment/Accountability/Documents/Indicators%20and%20Targets/SummaryofChanges.pdf>.
- Georgia Department of Education (2016b). *Approved Charter Schools 2014-15*. Available at <https://www.gadoe.org/External-Affairs-and-Policy/Charter-Schools/Pages/Approved-Charter-Schools.aspx>.
- Georgia Department of Education (2016c). *Georgia Milestones Statewide Scores*. Available at <http://www.gadoe.org/Curriculum-Instruction-and-Assessment/Assessment/Pages/Georgia-Milestones-2015-2016-Statewide-Scores.aspx>

- Georgia Department of Education (2016d). *Student Enrollment by Grade Level (PK-12)*. Available [https://oraapp.doe.k12.ga.us/ows-bin/owa/fte\\_pack\\_enrollgrade.entry\\_form](https://oraapp.doe.k12.ga.us/ows-bin/owa/fte_pack_enrollgrade.entry_form)
- Georgia Department of Education (2017). A Guide to the Georgia Student Growth Model. Available at <http://www.gadoe.org/Curriculum-Instruction-and-Assessment/Assessment/Documents/GSGM/FY18/SGPGuide%2006052017.pdf>
- Gleason, P., Clark, M., Tuttle, C. C., & Dwoyer, E. (2010). *The evaluation of charter school impacts: Final report* (No. NCEE 2010-4029). Washington, D.C.: National Center for Education Evaluation and Regional Assistance, Institute of Education Sciences, U.S. Department of Education.
- Goldhaber, D., Walch, J. & Gabele, B. (2013). "Does the Model Matter? Exploring the Relationship Between Different Student Achievement-Based Teacher Assessments." *Statistics and Public Policy* 1(1): 28-39.
- Guarino, C. M., Reckase, M. D. & Wooldridge, J. M. (2015). "Can Value-Added Measures of Teacher Performance be Trusted?" *Education Finance and Policy* 10: 117-156.
- Guarino, C., Stacy, B., and Wooldridge, J. (2016). "Alignment Study Comparing Two Models of School Effectiveness: the Georgia Department of Education's "Beating the Odds" Model and the State Charter Schools Commission's "Value-Added" Model." Report prepared for the State Charter Schools Commission of Georgia & The Georgia Department of Education's Charter Division.
- McCaffrey, D. F., Castellano, K. E. & Lockwood, J. R. (2014). "A Technical Evaluation of the Student Growth Component of the Georgia Teacher and Leader Evaluation System." Educational Testing Service.
- Hoxby, C. M., & Murarka, S. (2009). "Charter Schools in New York City: Who Enrolls and How They Affect Their Students' Achievement." NBER Working Paper 14852. Cambridge, MA: National Bureau of Economic Research.
- Hoxby, C. M., & Rockoff, J. E. (2004). "The impact of charter schools on student achievement." Harvard Institute of Economic Research Working Paper Series.
- Sass, T. (2006). "Charter Schools and Student Achievement in Florida." *Education Finance and Policy* 9(1): 91-122.
- Sass, T. R., Semykina, A. & Harris, D. N. (2014). "Value-Added Models and the Measurement of Teacher Productivity." *Economics of Education Review* 38: 9-23.
- Solmon, L., Paark, K., & Garcia, D. (2001). "Does charter school attendance improve test scores? The Arizona results." Phoenix, AZ: Goldwater Institute.
- Todd, P. E. & Wolpin, K. I. (2003). "On the Specification and Estimation of the Production Function for Cognitive Achievement," *Economic Journal* 113(485): F3-F33.
- Walsh, E. & Isenberg, E. (2015). "How Does a Value-Added Model Compare to Student Growth Model?" *Statistics and Public Policy* 2(1): 1-13.
- Whitehurst, G. J. & Chingos, M. M. (2011). "Class Size: What Research Says and What It Means for State Policy." Brown Center on Education Policy at Brookings.

## Appendix: Value Added Model Approach

### A. Value-Added Model Specification and Estimation

Until the 2015/16 State Charter Schools Performance Report, a value-added model of the following form was used to estimate school effects or the school's "value-added":

$$A_{ist} = A_{i,t-1}\beta_1 + X_{it}\beta_2 + \delta_s + \varepsilon_{ist} \quad (1)$$

where  $A_{ist}$  represents the achievement level of student  $i$  in school  $s$  at time  $t$ ,  $A_{i,t-1}$  is a vector of prior-year test scores,  $X_{it}$  is a vector of student characteristics,  $\delta_s$  is a school fixed effect, and  $\varepsilon_{ist}$  is a random error term. One can view the school fixed effect as the difference between a student's actual test score ( $A_{ist}$ ) and the score a student would be expected to earn based on his/her individual characteristics and prior year test scores ( $A_{i,t-1}\beta_1 + X_{it}\beta_2$ ), averaged over all students at a school. By construction, the average school has a fixed effect of zero and the performance of all other schools is measured relative to this average. Thus, a positive estimated value for a school's fixed effect indicates that it increases student achievement more than the average school, while a negative value indicates it is less effective than the average school. The model is called a "one-step VAM" by Ehlert et al. (2016), as the estimates of the influences of student characteristics and schools on student test scores are simultaneously estimated.

In 2016, the Governor's Office of Student Achievement (GOSA) and the State Charter Schools Commission (SCSC) sought feedback to strengthen the value-added methodology. One of the recommendations was the addition of school-level variables to control for the general school context rather than just individual-level student characteristics. In order to incorporate school-level student characteristics, the "two-step VAM" developed by Ehlert et al. (2016) was estimated for the 2016/17 school year. In the first stage of the two-step VAM, individual current-year student test scores are estimated as a function of individual-level prior-year test scores, individual student characteristics and *school-level* demographics (e.g., percent of students with disabilities or percent of students with limited English proficiency):

$$A_{ist} = A_{i,t-1}\gamma_1 + X_{it}\gamma_2 + Z_{st}\gamma_3 + \varphi_{ist} \quad (2)$$

where school-level student characteristics are represented by the vector  $Z_{st}$ . In the one-step VAM without any school-level characteristics (equation (1)), the implicit assumption is that a student would be expected to perform the same in a school serving a majority of students from low-income households as in a school serving a majority of students from relatively affluent families. Any deviations from expected performance are attributed to differences in school quality. In the two-step VAM, the expected performance of a student depends on both his/her own characteristics and the average characteristics of the student body in the school he/she attends. Because school indicators would be collinear with school-level characteristics, a second step is required to generate the school value-added estimates. The difference between the estimated performance ( $A_{i,t-1}\gamma_1 + X_{it}\gamma_2 + Z_{st}\gamma_3$ ) and actual performance ( $A_{ist}$ ) of each student that is generated in the first stage,  $\varphi_{ist}$ , is regressed on a set of school indicators in the second stage:

$$\varphi_{ist} = \mu_s + \omega_{ist} \quad (3)$$

The estimated effect for each school,  $\mu_s$ , is the weighted average difference between actual and predicted scores from the first stage, where the weights are the number of students in each school. Because the first stage nets out the impact of school environment, the school value-added estimates generated in the second stage represent the performance of a school relative to other schools with similar-looking student bodies.

The gap-year VAM approach used in the 2020-21 report is identical to the two-step procedure described above, except that the lagged score comes from two years prior ( $t-2$ ) instead of one year prior ( $t-1$ ). For elementary schools, gap-year value added will only be based on fifth grade students, because fourth graders will not have a score two-years prior (no testing in second grade). The student and school controls remain the same. The first stage of the two-step gap-year VAM is given by,

$$A_{ist} = A_{it-2}\gamma_1 + X_{it}\gamma_2 + Z_{st}\gamma_3 + \eta_{ist} \quad (4)$$

where achievement for student  $i$  in school  $s$  in year  $t$  is a function of their achievement two years prior ( $A_{it-2}$ ), and the same student ( $X_{it}$ ) and school ( $Z_{st}$ ) characteristics described above. Again, because school indicators would be collinear with school-level characteristics, a second step is required to generate the school value-added estimates. The difference between the estimated performance ( $A_{it-2}\gamma_1 + X_{it}\gamma_2 + Z_{st}\gamma_3$ ) and actual performance ( $A_{ist}$ ) of each student that is generated in the first stage,  $\eta_{ist}$ , is regressed on a set of school indicators in the second stage:

$$\eta_{ist} = \rho_s + \psi_{ist} \quad (5)$$

The estimated effect for each school,  $\rho_s$ , is the weighted average difference between actual and predicted scores from the first stage, where the weights are the number of students in each school. Because the first stage nets out the impact of school environment, the school value-added estimates generated in the second stage represent the gap-year performance of a school relative to other schools with similar-looking student bodies.

There are two things worth noting in the value-added model estimates. First, virtually all of the coefficients on the demographic characteristics have the expected sign. Second, the majority of the coefficients on the demographic variables are statistically significant, indicating they have a non-zero impact on current test scores, even after controlling for prior test scores.

### *B. Student Growth Percentile Model Specification and Estimation*

The student growth percentiles presented here were calculated using the student-level data along with an approach similar to that used by the state. For a detailed description of the student growth percentile approach, see <https://www.gadoe.org/Curriculum-Instruction-and-Assessment/Assessment/Documents/SGP%20Guide.pdf> and <https://eric.ed.gov/?id=ED583125>. The approach used here is similar to the approach described in Betebenner (2011). In particular, quantile regression is used to estimate the following specification:

$$A_{igst} = f(A_{i,t-1}) + \epsilon_{igst}$$

Where current year achievement ( $A_{igst}$ ) for student  $i$  in grade  $g$  in school  $s$  in year  $t$  is a cubic function of prior year achievement ( $f(A_{i,t-1})$ ) and a random error term ( $\epsilon_{igst}$ ). A cubic function of prior achievement is used because it allows for more flexibility (i.e. nonlinearity) in the relationship between past and current achievement. For each subject (math, ELA, and all-subject



average) and grade (4 through 12), the regression is estimated 99 times (once for each quantile ranging from 1 to 99). After estimating each regression, a predicted value is captured which marks the benchmark for expected current year achievement for a student with a similar performance history (i.e., prior year score). Next, a student's actual performance in period  $t$  ( $A_{igst}$ ) is compared against the benchmark performance cut-points to determine in which quantile the student is assigned. The quantile assigned to the student becomes that student's "student growth percentile". The last step involves calculating the average student growth percentile within each school-by-grade group (i.e., elementary, middle, or high grades). These average student growth percentiles are presented in the report.

*C. Value-Added Model Estimates*

	Elementary Value Added Estimates		
	All Subject	Math	ELA
Lagged Math Score	0.4116 <sup>***</sup> (0.0017)	0.7654 <sup>***</sup> (0.0016)	
Lagged ELA score	0.4096 <sup>***</sup> (0.0017)		0.7500 <sup>***</sup> (0.0016)
only_math	-0.1433 <sup>***</sup> (0.0422)		
only_read	-0.1890 <sup>***</sup> (0.0308)		
Free/Reduced Lunch	-0.0272 <sup>***</sup> (0.0023)	-0.0418 <sup>***</sup> (0.0028)	-0.0356 <sup>***</sup> (0.0028)
Female	-0.0249 <sup>***</sup> (0.0021)	-0.0644 <sup>***</sup> (0.0026)	0.0140 <sup>***</sup> (0.0025)
Foreign Born	0.0508 <sup>***</sup> (0.0056)	0.0511 <sup>***</sup> (0.0071)	0.0391 <sup>***</sup> (0.0070)
Black	-0.0196 <sup>***</sup> (0.0027)	-0.0438 <sup>***</sup> (0.0035)	-0.0469 <sup>***</sup> (0.0034)
Hispanic	-0.0010 (0.0039)	-0.0096 <sup>*</sup> (0.0049)	-0.0099 <sup>*</sup> (0.0048)
Asian	0.1369 <sup>***</sup> (0.0055)	0.2017 <sup>***</sup> (0.0069)	0.1213 <sup>***</sup> (0.0069)
American Indian	0.0410 (0.0247)	0.0629 <sup>*</sup> (0.0311)	0.0006 (0.0309)
Multi-Racial	0.0099 <sup>*</sup> (0.0049)	0.0004 (0.0062)	0.0039 (0.0061)
ESOL Enrolled	-0.0769 <sup>***</sup> (0.0047)	-0.0945 <sup>***</sup> (0.0059)	-0.1368 <sup>***</sup> (0.0059)
Num. Schools Attended	0.0171 (0.0144)	0.0226 (0.0183)	-0.0023 (0.0179)
Changed Schools	-0.0272 <sup>***</sup> (0.0034)	-0.0366 <sup>***</sup> (0.0043)	-0.0244 <sup>***</sup> (0.0043)
Diff. from Modal Age	-0.0033 <sup>***</sup> (0.0002)	-0.0041 <sup>***</sup> (0.0003)	-0.0030 <sup>***</sup> (0.0003)

late_entry	-0.0300*	-0.0406*	-0.0201
	(0.0126)	(0.0159)	(0.0156)
Lagged Num. Disc. Inc.	-0.0431***	-0.0507***	-0.0461***
	(0.0041)	(0.0052)	(0.0052)
Lagged Pct. Present	0.0027***	0.0034***	0.0046***
	(0.0002)	(0.0002)	(0.0002)
Lagged Exit	0.0498	0.1208	-0.0104
	(0.0504)	(0.0635)	(0.0626)
Orthopedic Impairment	-0.1029	-0.0527	-0.2369**
	(0.0638)	(0.0805)	(0.0799)
Speech-Language Imp.	-0.0107	0.0013	-0.0428***
	(0.0064)	(0.0081)	(0.0080)
Deaf	-0.1484***	-0.1455***	-0.2376***
	(0.0296)	(0.0373)	(0.0370)
Visual Impairment	-0.0844	-0.1216	-0.1068
	(0.0492)	(0.0620)	(0.0616)
Emotional/Behav. Dis.	-0.1789***	-0.1986***	-0.2541***
	(0.0140)	(0.0177)	(0.0175)
Specific Learning Dis.	-0.1685***	-0.1819***	-0.2625***
	(0.0043)	(0.0054)	(0.0054)
Deaf and Blind	-0.1915	-0.2029	-0.4314
	(0.4087)	(0.5153)	(0.5117)
Autism	-0.1733***	-0.1921***	-0.2582***
	(0.0093)	(0.0116)	(0.0115)
Traumatic Brain Injury	-0.2568**	-0.2721*	-0.3791***
	(0.0914)	(0.1152)	(0.1144)
Significant Dev. Delay	-0.0388	-0.0104	-0.1359*
	(0.0444)	(0.0556)	(0.0555)
Other Health Imp.	-0.1901***	-0.2113***	-0.2816***
	(0.0064)	(0.0081)	(0.0080)
Mild Intellectual Dis.	-0.2898***	-0.2451***	-0.4837***
	(0.0160)	(0.0201)	(0.0199)
Mod. Intellectual Dis.	-0.4526***	-0.2881*	-0.7639***
	(0.0914)	(0.1153)	(0.1145)
School-Average ESOL Enrolled	0.0202*	0.0693***	-0.0653***
	(0.0079)	(0.0100)	(0.0099)
School-Average Students w. Disabilities	-0.1650***	-0.1948***	-0.1366***
	(0.0200)	(0.0252)	(0.0250)
School Average Direct Certification Percent	-0.0022***	-0.0035***	-0.0028***
	(0.0001)	(0.0001)	(0.0001)
Grade 4	-0.0052*	-0.0104***	0.0005
	(0.0020)	(0.0025)	(0.0025)

Constant	-0.0580*	-0.0399	-0.1972***
	(0.0236)	(0.0296)	(0.0292)
R-Squared	0.8076	0.7309	0.7315
N	166264	166438	167058

Note. Standard errors in parentheses; \*  $p < 0.05$ , \*\*  $p < 0.01$ , \*\*\*  $p < 0.001$

	Middle School Value Added Estimates		
	All Subject Average	Math	ELA
Lagged Math Score	0.4075*** (0.0014)	0.7651*** (0.0014)	
Lagged ELA Score	0.4333*** (0.0014)		0.7603*** (0.0014)
only_math	-0.1175*** (0.0254)		
only_read	-0.1769*** (0.0173)		
Free/Reduced Lunch	-0.0427*** (0.0019)	-0.0609*** (0.0025)	-0.0518*** (0.0024)
Female	0.0269*** (0.0018)	-0.0081*** (0.0022)	0.0742*** (0.0022)
Foreign Born	0.0426*** (0.0050)	0.0381*** (0.0064)	0.0289*** (0.0064)
Black	-0.0050* (0.0023)	-0.0502*** (0.0029)	-0.0242*** (0.0028)
Hispanic	0.0055 (0.0031)	-0.0022 (0.0040)	0.0037 (0.0039)
Asian	0.1739*** (0.0048)	0.2769*** (0.0061)	0.1498*** (0.0060)
American Indian	0.0086 (0.0213)	0.0020 (0.0271)	-0.0137 (0.0269)
Multi-Racial	0.0127** (0.0042)	0.0042 (0.0054)	0.0053 (0.0053)
ESOL Enrolled	-0.0921*** (0.0045)	-0.1746*** (0.0057)	-0.1566*** (0.0057)
Num. Schools Attended	0.0303* (0.0123)	0.0324* (0.0158)	0.0204 (0.0155)
Changed Schools	-0.0625*** (0.0031)	-0.0696*** (0.0039)	-0.0562*** (0.0038)
Diff. from Modal Age	-0.0031*** (0.0002)	-0.0040*** (0.0002)	-0.0039*** (0.0002)
late_entry	-0.0262* (0.0103)	-0.0415** (0.0132)	-0.0291* (0.0130)
Lagged Num. Disc. Inc.	-0.0506*** (0.0024)	-0.0633*** (0.0030)	-0.0598*** (0.0030)
Lagged Pct. Present	0.0028*** (0.0001)	0.0047*** (0.0002)	0.0038*** (0.0002)
Lagged Exit	0.0375 (0.0235)	0.0290 (0.0292)	0.0513 (0.0290)

Orthopedic Impairment	-0.0690	-0.1377*	-0.1146
	(0.0483)	(0.0617)	(0.0612)
Speech-Language Imp.	-0.0054	-0.0163	-0.0211
	(0.0089)	(0.0113)	(0.0112)
Deaf	-0.0864***	-0.1140***	-0.1709***
	(0.0244)	(0.0312)	(0.0308)
Visual Impairment	-0.0111	-0.0678	-0.0158
	(0.0369)	(0.0473)	(0.0465)
Emotional/Behav. Dis.	-0.0873***	-0.1316***	-0.1741***
	(0.0104)	(0.0132)	(0.0130)
Specific Learning Dis.	-0.1079***	-0.1545***	-0.1879***
	(0.0036)	(0.0045)	(0.0045)
Deaf and Blind	-0.2565	-0.1968	-0.3736
	(0.2367)	(0.3022)	(0.2997)
Autism	-0.0683***	-0.1154***	-0.1373***
	(0.0083)	(0.0106)	(0.0105)
Traumatic Brain Injury	-0.1692*	-0.2403*	-0.2660**
	(0.0749)	(0.0956)	(0.0948)
Sev. Intellectual Dis.	-0.6873	-0.7971	-0.7759
	(0.4099)	(0.5235)	(0.5191)
Other Health Imp.	-0.1345***	-0.1892***	-0.2204***
	(0.0052)	(0.0065)	(0.0065)
Mild Intellectual Dis.	-0.1958***	-0.2199***	-0.3521***
	(0.0139)	(0.0176)	(0.0175)
Mod. Intellectual Dis.	-0.1327	-0.1855	-0.3063**
	(0.0855)	(0.1092)	(0.1083)
School-Average ESOL Enrolled	0.1087***	0.0963***	0.1005***
	(0.0091)	(0.0116)	(0.0115)

School-Average Students w. Disabilities	-0.3227*** (0.0213)	-0.4005*** (0.0271)	-0.3315*** (0.0268)
School Average Direct Certification Percent	-0.0023***	-0.0039***	-0.0029***
Grade 6	0.0535*** (0.0033)	0.0483*** (0.0042)	0.0569*** (0.0042)
Grade 7	0.0041 (0.0021)	0.0042 (0.0027)	0.0046 (0.0027)
Constant	-0.1006*** (0.0187)	-0.1458*** (0.0238)	-0.1886*** (0.0234)
R-Squared	0.8162	0.7379	0.7338
N	230440	231251	232410

Note. Standard errors in parentheses; \*  $p < 0.05$ , \*\*  $p < 0.01$ , \*\*\*  $p < 0.001$

	Value Added Estimates for High School		
	HS - All	HS - ALG	HS - AME
8 <sup>th</sup> Grade Math Score (or 7 <sup>th</sup> for 9 <sup>th</sup> graders)	0.3238*** (0.0022)	0.6088*** (0.0039)	0.1724*** (0.0025)
8 <sup>th</sup> Grade ELA Score (or 7 <sup>th</sup> for 9 <sup>th</sup> graders)	0.4248*** (0.0023)	0.2300*** (0.0037)	0.5600*** (0.0028)
only_math	0.3488*** (0.0145)		
only_read	-0.3569*** (0.0134)		
Free/Reduced Lunch	-0.0308*** (0.0031)	-0.0172*** (0.0046)	-0.0409*** (0.0039)
Female	0.0053 (0.0029)	-0.0458*** (0.0044)	0.0515*** (0.0035)
Foreign Born	0.0619*** (0.0084)	0.1246*** (0.0137)	0.0257** (0.0099)
Black	-0.0640*** (0.0037)	-0.0488*** (0.0056)	-0.0606*** (0.0045)
Hispanic	-0.0269*** (0.0045)	0.0159* (0.0070)	-0.0524*** (0.0055)
Asian	0.0619*** (0.0082)	0.2621*** (0.0158)	0.0306*** (0.0089)
American Indian	-0.0493 (0.0332)	-0.0208 (0.0517)	-0.0840* (0.0401)
Multi-Racial	-0.0128 (0.0077)	-0.0048 (0.0115)	-0.0143 (0.0096)
ESOL Enrolled	-0.1107*** (0.0086)	-0.0947*** (0.0118)	-0.1955*** (0.0120)
Num. Schools Attended	-0.0500*** (0.0145)	-0.0146 (0.0210)	-0.0831*** (0.0185)
Changed Schools	0.0159** (0.0052)	0.0086 (0.0077)	-0.0044 (0.0069)
Diff. from Modal Age	-0.0066*** (0.0002)	-0.0066*** (0.0004)	-0.0065*** (0.0003)
late_entry	-0.0279* (0.0109)	-0.0558*** (0.0158)	0.0034 (0.0139)
Lagged Num. Disc. Inc.	-0.1104***	-0.0935***	-0.1665***



	(0.0069)	(0.0081)	(0.0130)
Lagged Pct. Present	0.0093***	0.0112***	0.0077***
	(0.0002)	(0.0003)	(0.0002)
Lagged Exit	-0.0861**	-0.0663	-0.1630***
	(0.0303)	(0.0488)	(0.0353)
Orthopedic Impairment	0.0137	-0.0759	0.1051
	(0.0790)	(0.1149)	(0.1026)
Speech-Language Imp.	-0.0153	0.0477	-0.1312**
	(0.0279)	(0.0358)	(0.0426)
Deaf	-0.1343**	0.0814	-0.3052***
	(0.0430)	(0.0657)	(0.0544)
Visual Impairment	-0.1481*	-0.2759**	-0.0926
	(0.0678)	(0.1052)	(0.0811)
Emotional/Behav. Dis.	-0.1732***	-0.1348***	-0.2062***
	(0.0172)	(0.0239)	(0.0227)
Specific Learning Dis.	-0.1874***	-0.1249***	-0.2379***
	(0.0058)	(0.0082)	(0.0077)
Deaf and Blind	-0.1057***	-0.0549**	-0.1529***
	(0.0139)	(0.0203)	(0.0179)
Autism	0.0126	0.1677	-0.0224
	(0.1091)	(0.1775)	(0.1324)
Traumatic Brain Injury	-0.2071***	-0.1585***	-0.2552***
	(0.0086)	(0.0122)	(0.0114)
Other Health Imp.	-0.3416***	-0.1644***	-0.5306***
	(0.0227)	(0.0317)	(0.0304)
Mild Intellectual Dis.	-0.4568**	-0.2829	-0.5958**
	(0.1544)	(0.2263)	(0.1986)
Mod. Intellectual Dis.	-0.0776**	-0.0517	-0.1062**
	(0.0265)	(0.0366)	(0.0364)
School-Average ESOL Enrolled	-0.2464***	-0.4258***	-0.1790***
	(0.0391)	(0.0630)	(0.0471)
School-Average Students w. Disabilities	-0.0068***	-0.0081***	-0.0051***
	(0.0001)	(0.0002)	(0.0002)
School Average Direct Certification Percent	-0.7355***	-0.6086***	
	(0.0103)	(0.0204)	

grade9	-0.2887*** (0.0078)	-0.0539** (0.0205)	-0.3979*** (0.0225)
grade11	-0.3518*** (0.0065)	-0.0668* (0.0268)	-0.3940*** (0.0223)
grade12			-0.0463* (0.0229)
grade10	-0.0358 (0.0258)	0.0425 (0.0385)	-0.1853*** (0.0351)
Constant	-0.2962*** (0.0663)	-0.3739*** (0.0856)	-0.0547 (0.0988)
R-Squared	0.6090	0.5826	0.6781
N	197781	90443	109443

Note. Standard errors in parentheses; \*  $p < 0.05$ , \*\*  $p < 0.01$ , \*\*\*  $p < 0.001$