

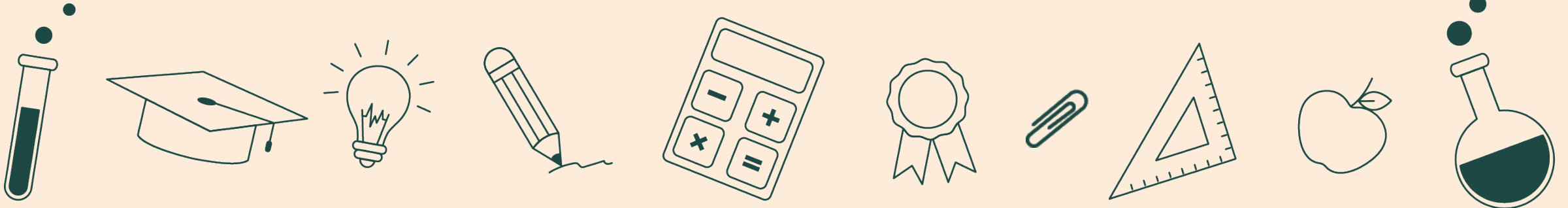


# Student Enrollment & School Funding

Carmen Freemire

Director of School Finance

[Carmen.Freemire@scsc.georgia.gov](mailto:Carmen.Freemire@scsc.georgia.gov)





# Mission

The mission of the State Charter Schools Commission of Georgia is to improve public education by authorizing high quality charter schools that provide students with better educational opportunities than they would otherwise receive in traditional district schools.





# Vision

Innovative and superior charter schools advancing education in every community.





# Presentation Overview

- QBE Funding
- State Charter Supplement Funding
- Forward Funding
- Enrollment
- Putting It Together

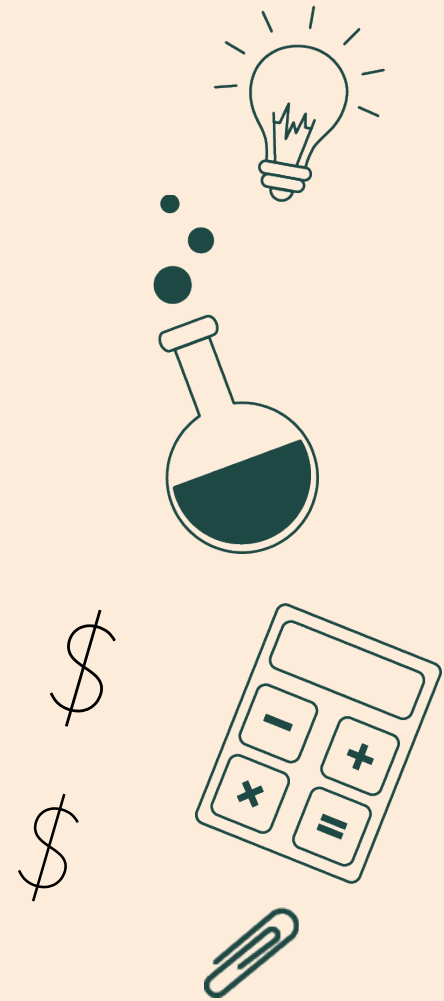




# Funding Overview

# 3 Types of Funding

- **State/QBE Funding**
  - Enacted in 1985
  - Public education funding Grades K – 12
  - Does not include Pre-K
- **SCSC Supplemental Funding**
  - Funding for state charter schools
  - 3 components: base supplement, capital outlay & categorical grants
- **Federal Funding- can include**
  - Every Student Succeeds Act (ESSA) grants e.g. Title IA
  - Individuals with Disabilities Education Act (IDEA)

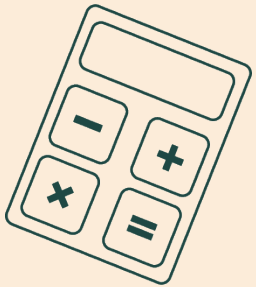




# QBE Funding Overview

# Quality Basic Education (QBE) Funding

- **Total QBE includes 2 categories of revenue:**
  - Amounts based on the number and types of students (Grade specific, Special Education, ...)
  - Training and Experience (T&E) of Staff
- **And 2 categories of deductions:**
  - Local Five Mill Share (LFMS)
  - Austerity
- **$QBE = ((\text{student FTE} + \text{teacher T \& E}) - \text{LFMS}) - \text{Austerity}$**





# QBE Funding for Students - FTE

- $QBE = ((\text{student FTE} + \text{teacher T \& E}) - \text{LFMS}) - \text{Austerity}$
- **Administered using weighted FTE (full-time equivalent) counts**
  - Does not represent the number of students in seats, but instead is based on the time that students spend in various instructional programs.
- **School day is divided into 6 segments. Schools earn funding based on the placement of student during each segment.**
- **One FTE is comprised of 6 instructional segments.**
- **One FTE may reflect services provided to 6 different students.**

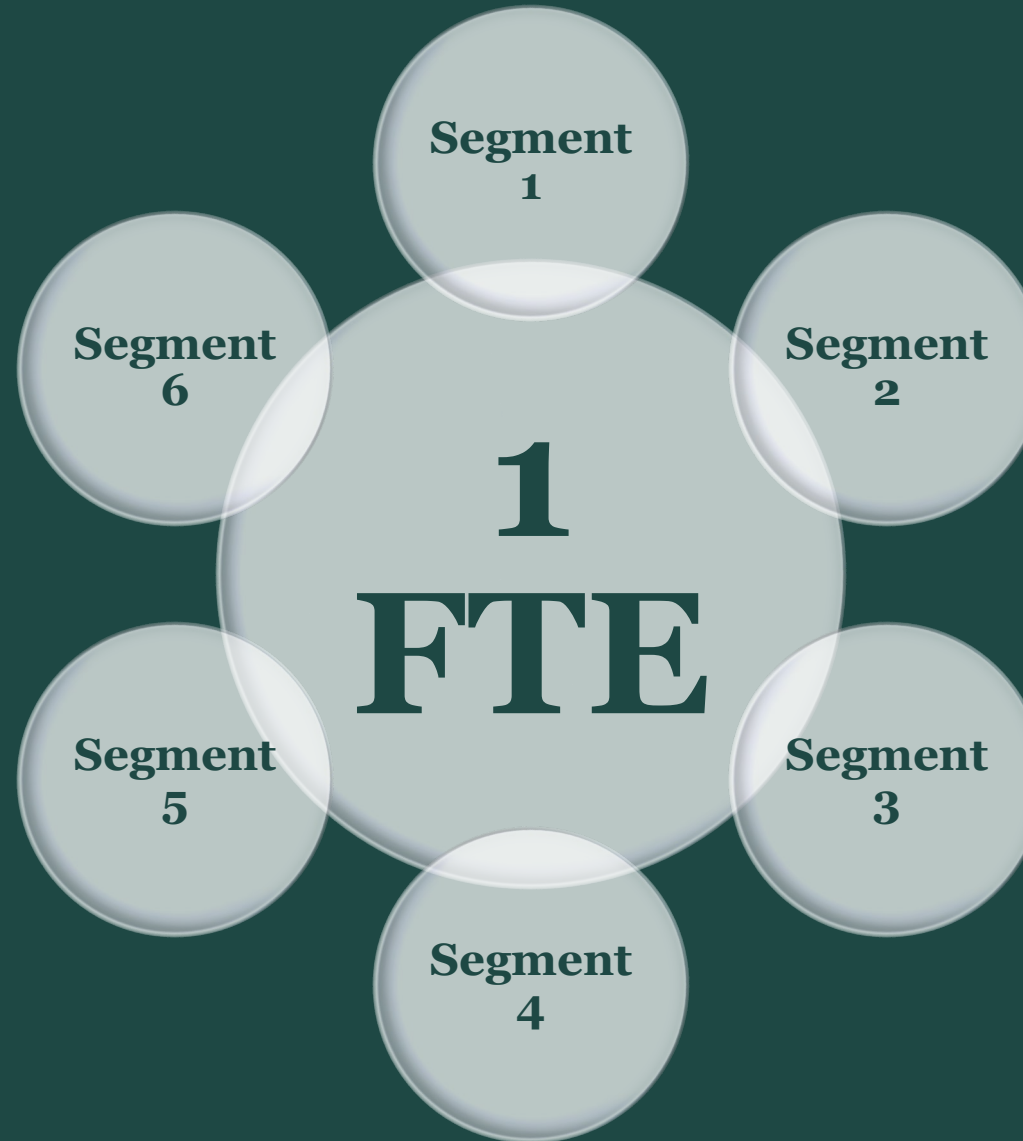


# QBE Funding for Students - FTE

- **19 different QBE programs**
  - 6 programs are for Exceptional Education students
    - Mild Resource
    - Moderate Resource
    - Moderate Self-Contained
    - Severe Self-Contained
    - Inclusion
    - Gifted
- **Program weights are based on the cost components of each program.**
  - The high school general education program has the lowest estimated cost and is assigned a weight of 1.0.
  - Weights for other programs equal the per pupil cost for that program divided by the per pupil cost of the high school gen ed program.
  - Weight change over time as the cost of each program changes.



On FTE is Equal to 6 Instructional Segments

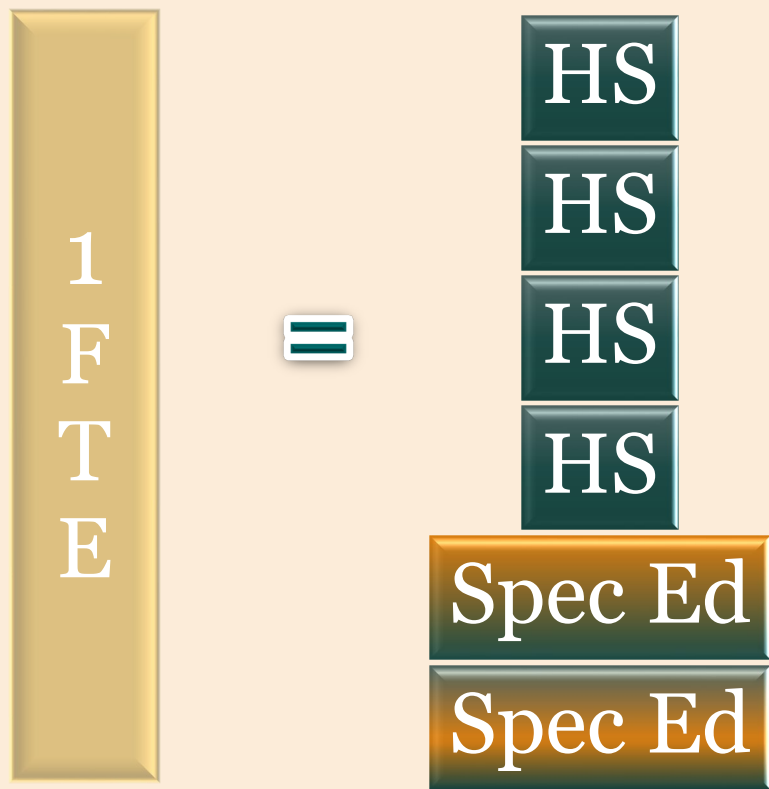




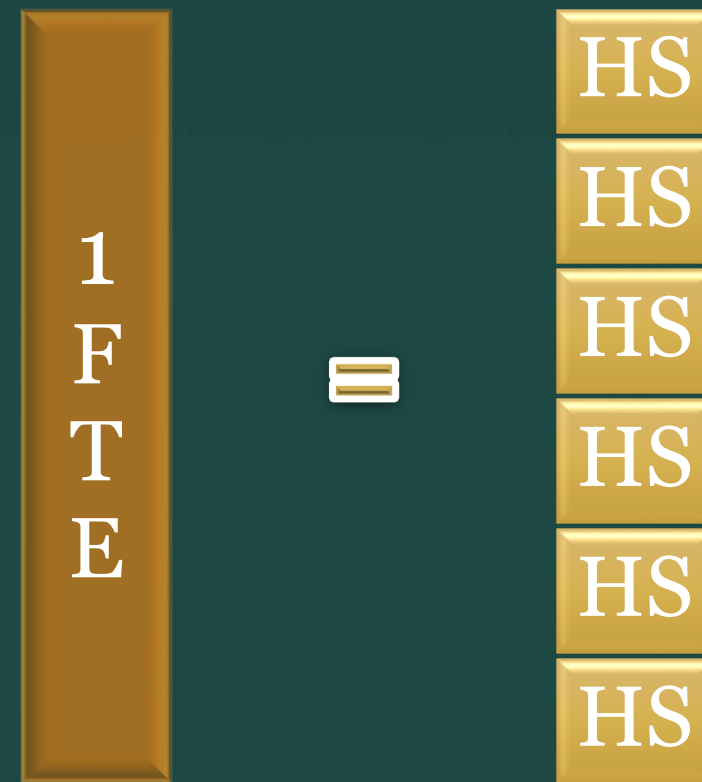
# QBE Funding for Students - Example

---

- 4 segments – H.S. gen ed classroom (funding weight 1.0)
- 2 segments – special ed program (funding weight 2.8)
- Daily weight = 1.6
  - $((4 \times 1.0) + (2 \times 2.8)) / 6$
- Funding earned = base allocation x daily weight
  - Base allocation = \$3,000
  - $\$3,000 \times 1.6 = \textbf{\$4,800}$



**\$4,800**  
earned for student



**\$3,000**  
earned for student



# QBE Funding for Students - FTE

- Determining Per Pupil Program Costs – Factors Considered
  - Direct Instructional Costs
    - Salaries & benefits for teachers
    - Paraprofessionals
    - Consumable materials
    - Textbooks
    - Equipment
  - Indirect Instructional Costs
    - Central Administration
    - School Administration
    - Facility Maintenance & Operations
- Remember – these costs can change year-to-year



# Programs and Program Weights for FY24

- **Kindergarten Program**
  - Weight: 1.6831
  - Allocation per FTE: \$5,087.03
- **Middle School Program**
  - Weight: 1.0336
  - Allocation per FTE: \$3,124.10
- **High School Program (Base)**
  - Weight: 1.0000
  - Allocation per FTE: \$3,022.45
- **Gifted**
  - Weight: 1.7267
  - Allocation per FTE: \$5,218.81



# QBE Funding for Teachers – T&E



- QBE = ((student FTE + **teacher T & E**) – LFMS) - Austerity
- Training & Experience (T&E)
  - Training – based on degree or certifications
  - Experience - # of years
  - Eligible to all certified staff
- Base Salary Schedule
  - Base Rate FY24: \$41,092
- Funding covers the state-minimum salaries of certified personnel
- Based on CPI Reporting





# QBE Deductions - Local Five Mill Share

- $QBE = ((\text{student FTE} + \text{teacher T \& E}) - \text{LFMS}) - \text{Austerity}$
- Since FY13 the General Assembly has required a deduction from QBE equivalent to LFMS from state charter schools' funding.
- Deduction = **lower** amount of either :
  - FY24 Statewide average - \$1,518/FTE - OR
  - The average LFMS of the districts comprising the attendance zone.
    - Schools with a statewide attendance zone will use the statewide average.



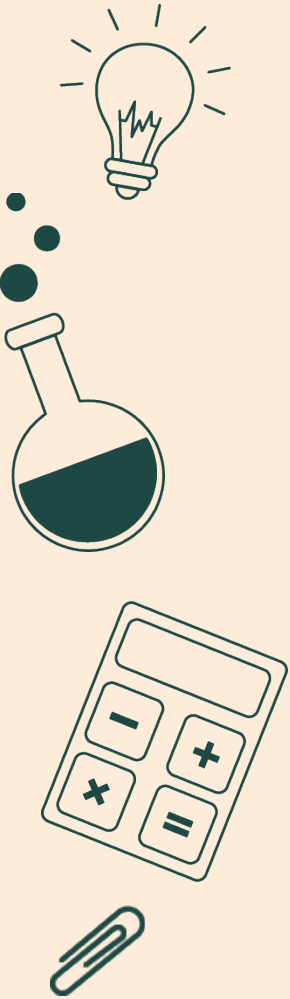
# QBE Deductions - Austerity

- $QBE = ((\text{student FTE} + \text{teacher T \& E}) - \text{LFMS}) - \text{Austerity}$
- As a result of difficult economic conditions, the General Assembly may implement a reduction of education funding.
  - FY21 – Austerity was 10.37%
  - FY22 – Austerity was 4.23%
  - FY23 – Austerity was 0%
  - FY24- Austerity is 0%
- State charter schools receive the same austerity deduction as all other public schools.



# QBE – As a Board Member

- Less Important: understanding the precise calculation of QBE.
- More Important: understanding that specific student characteristics impact funding & understanding any special conditions (i.e. austerity) that impact revenues.
- Role of the Data Collections process.
- Importance of Appropriate Personnel.
- Oversight:
  - Periodic reports on data collections cycles
  - Review allotment sheets





Questions?



# State Charter Supplement Funding Overview

# State Charter Supplemental Funding

- Three Components to Determine Funding:
  - **Categorical Grants**  
Transportation, nutrition, nursing, etc.
  - **Base Supplement for B/M**  
Proxy for local funding
    - FY24: \$4,284 - \$5,877/FTE
  - **Capital Funding for B/M**  
For capital expenses
    - FY24: \$1,447 - \$2,453/FTE
- **Total Supplement** = (categorical grants + base supplement + capital funding) – commission fee

## Commission Fee

Up to 3%

Historically the SCSC  
has withheld less than  
3%.



# Supplement Funding – Categorical Grants

- Common Categorical Grants
  - State Nutrition Grant
    - FY24 Average: \$17.46/FTE
  - State Transportation Grant
    - FY24 Average \$80.78/FTE
- Nursing Grant
  - \$20,000 for all SCSC schools, excluding 1<sup>st</sup> year schools



# Supplement Funding – Base Supplement

- Equal to –
  - Average local revenue (plus equalization) of all school districts (i.e. **statewide average**) – unless
  - Average local revenue (plus equalization) of districts comprising the school's attendance zone is less than the statewide average – then
- Amount will be equal to:
  - **Average of the local districts within the attendance zone** – or
  - **Average of the five lowest-funded districts**
  - Whichever is greater





Which is less?

Average local  
revenue (plus  
equalization) of all  
school districts  
(i.e. statewide  
average)

Average local  
revenue (plus  
equalization) of  
districts  
comprising the  
school's  
attendance zone

Which is greater?

Average of the local  
districts within the  
attendance zone

Average of the five  
lowest-funded  
districts

**FY 24 B/M Base  
Supplement  
Range:  
\$4,284 - \$5,877  
/FTE**

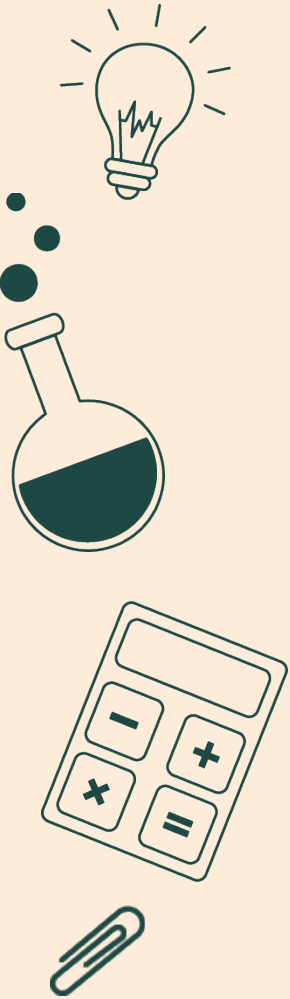
# Supplement Funding – Capital Funding

- Equal to –
  - Statewide average per pupil capital expenditure (excluding local revenue bonds) – OR
  - Per pupil capital expenditure of the school system in which the school is located.
- Whichever is **greater**.
- FY24: \$1,447 - \$2,453 /FTE



# Supplement Funding – Virtual Schools

- Generally, do not receive Transportation or Nutrition grants.
- Base Supplement is funded at  $\frac{2}{3}$  of the statewide average
  - FY24- \$3,918
- Capital Outlay is funded at  $\frac{1}{4}$  of the statewide average
  - FY24- \$362
- LFMS contribute  $\frac{2}{3}$  of the statewide average
  - FY24- \$1,012



# Supplement Funding – As a Board Member

- Less Important: understanding the precise calculation of the supplement.
- More Important: making sure records reflect proper details
  - FTE Numbers
  - Attendance Zone
  - Location
  - Transportation/Nutrition Provided
- Role of SCSC May Collection Survey/Spreadsheet





Questions?



# Forward Funding Overview

# Forward Funding Overview

- Purpose- to provide funding for a new or existing SCSC school that is either:
  - In the first year of operation or
  - Anticipates growth of 2% or greater
- School leaders submit projections to the SCSC each May
- Forward funding is not “held harmless”
  - Funding is adjusted at the midterm –
    - Over projections = reduced allotments
    - Under projections = increased allotments



# Forward Funding - Example

- Super Great Charter School

- K – 8
- Track record – 500ish students
- Loss of industry → decline in students
- October FTE – 450 students
- Midterm held harmless? **YES**
- If FTE declines continue then school will experience a reduction in funding, but not until the following fiscal year.

- Super Awesome Charter School

- K – 5
- Track record – 300ish students
- Add grades 6 – 8 with 200 additional students projected (500 total)
- No sports → only 100 additional students enroll (400 total)
- Midterm held harmless? **NO**
- School will see a decrease in their funding during the current fiscal year.



# Forward Funding for Federal Funds

- Purpose- to provide funding for new or existing SCSC schools that are:
  - In the first year of operation or
  - Anticipate growth of 33% or greater or
  - Are adding a grade, not held to 33% threshold.
- School leaders submit projections to the SCSC each May
  - New schools submit anticipated first year enrollment and a projected poverty percentage.
  - Expanding schools submit anticipated increases in enrollment due to growth or adding a grade(s).



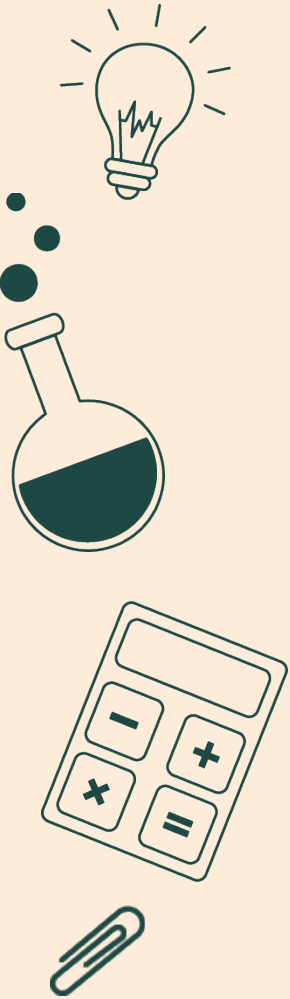
# Forward Funding for Federal Funds

- Forward funding is not “held harmless”
  - Funding is adjusted typically in February- Title IA.
  - Allocations are adjusted during current fiscal year.
- New Schools
  - Over projections in poverty percentage or enrollment = reduced federal grant allocations.
  - Under projections = increased federal grant allocations.
- Expanding Schools
  - Over projections in enrollment = reduced federal grant allocations.
  - Under projections = increased federal grant allocations.



# Forward Funding – As a Board Member

- Understand the perils of under-estimating or over-estimating enrollment.
- Understand when funding WILL and WILL NOT be “held harmless”
- Role of SCSC May Collection Survey/Spreadsheet





# Enrollment



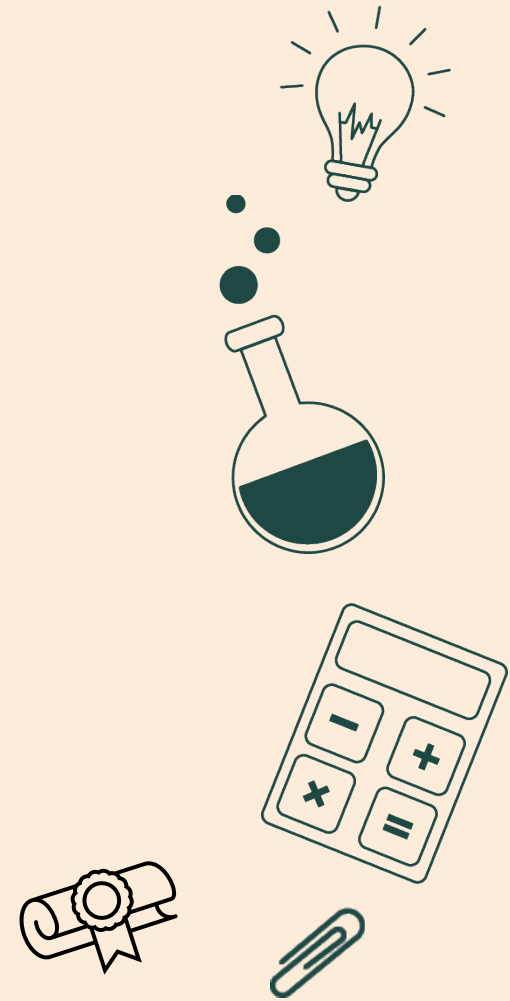
State Charter Schools Commission

[scsc.georgia.gov](http://scsc.georgia.gov)



# Enrollment

- *Enrollment drives funding*
- **Consequences of under-enrollment**
  - Fixed costs versus non-fixed costs
  - Academic program impact
  - Enrollment variance impact
  - Impact on renewal



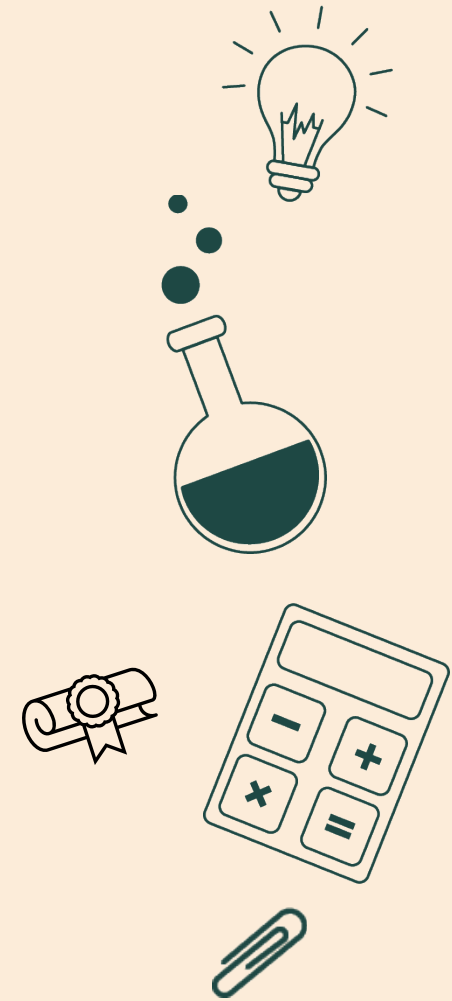
# Enrollment

- **Considerations**
  - Track enrollment and identify trends
  - Include enrollment as part of the school's dashboards and have specific checkpoints.
  - Explore the use of a Customer Relationship Management (CRM) tool
  - Over-enrollment



# Enrollment – As a Board Member

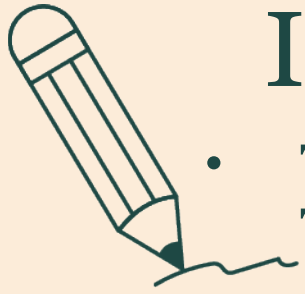
- Role of Marketing
- Student Services & Decision Making
- Checkpoints
- Potential Consequences of Under-Enrollment and Over-Enrollment







# Putting It Together



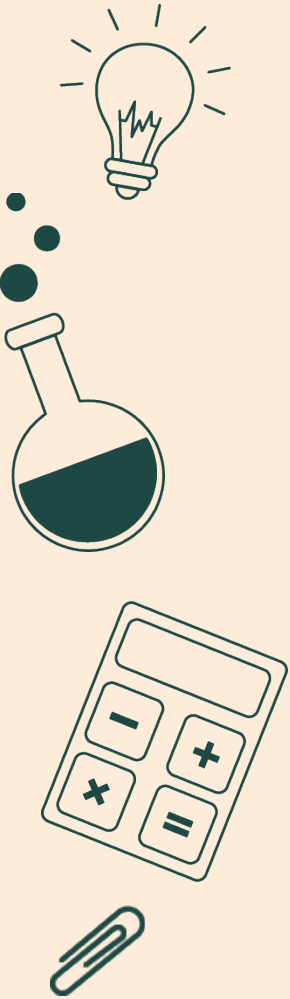
# Importance of Correct Data Reporting

- The QBE Act requires local school systems to report student enrollment in terms of Full-Time Equivalent (FTE).
- The main collection of FTE data is completed in October (FTE-1) and March (FTE-3) each school year.
- State funding for the operation of instructional programs is generated from FTE data reported by local school systems.
- Accurate FTE data reporting is essential for a school to earn the funds needed to provide those educational services to its students.



# FTE reporting refers to the state funding mechanism based on:

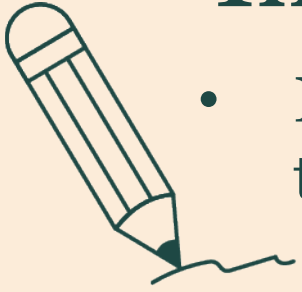
- Student enrollment.
- Educational services local school systems provide for the students.
- FTE Count Day  
Data collected on the count day can be thought of as a *picture* of the instructional services scheduled to be provided to each student by the local school system on that specific date.
- If a student or teacher is absent on Count Day, the services can still be reported as “scheduled to be provided.”



# When is FTE Reported?

Collection Cycle	Count Date	Sign-Off
<ul style="list-style-type: none"><li>• FTE-1</li><li>• FTE-3</li></ul>	<ul style="list-style-type: none"><li>• First Tuesday in October</li><li>• First Thursday in March</li></ul>	<ul style="list-style-type: none"><li>• 3 weeks after each count date</li></ul>

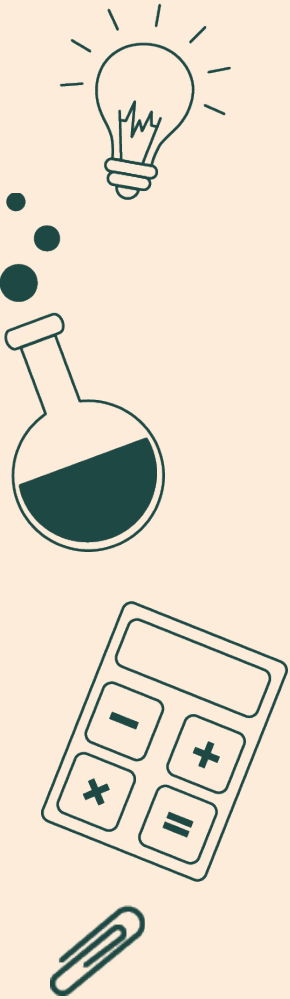
# Importance of Correct Data Reporting



- It is vital that the school's student data is reported accurately and on-time.
- The student data your school reports for FTE purposes will affect its state and federal funding.
- Hold the school's Leadership Staff accountable by asking questions regarding what the student data looks like for the current school year.

# FTE— As a Board Member

- More important- Know the composition of your school's student population body, so when you are looking at FTE reported data you can verify that it is accurate.
  - Knowing when FTE data collection is scheduled at your school.
- Less important- Understanding all the instructional segments in FTE funding and how it is reported.





# Accessing GADOE portal

- Make sure your school has access to the GADOE portal.
- The portal allows users to review and transmit financial and budget data to the GADOE.
- To request portal access go to [Login \(doe.k12.ga.us\)](https://doe.k12.ga.us)



# Where to Find FTE Information

- [financeweb.doe.k12.ga.us/QBEPublicWeb/ReportsMenu.aspx](http://financeweb.doe.k12.ga.us/QBEPublicWeb/ReportsMenu.aspx)

**Georgia**  
***Department of Education***

**Quality Basic Education - Reports**

<b>Report Category</b>	QBE Reports ▼	<b>Report Name</b>	▼
------------------------	---------------	--------------------	---

Payment Advice

Weights for FTE Funding Formula

State Salary Schedule

Daily Salary Schedule

Allotment Sheet

Salary and Operations Detail

Charter Site Allotment Sheet

Charter Site Salary and Operations Detail

Residential Facility Site Allotment Sheet

Residential Facility Salary and Operations Detail

Midterm Comparison Sheet





# Where to Find FTE Information

- [financeweb.doe.k12.ga.us/QBEPublicWeb/ReportsMenu.aspx](http://financeweb.doe.k12.ga.us/QBEPublicWeb/ReportsMenu.aspx)

A screenshot of a web application interface. At the top, it says "Georgia Department of Education" in blue and red text. Below that is the heading "Quality Basic Education - Reports". There are two dropdown menus: "Report Category" with "QBE Data Request" selected, and "Report Name" which is currently empty. Below these is a "View Report" button. A dropdown menu is open from the "Report Name" field, showing two options: "QBE Earnings" and "QBE FTE".

**Georgia**  
**Department of Education**

**Quality Basic Education - Reports**

Report Category: QBE Data Request ▼ Report Name: ▼

View Report

QBE Earnings  
QBE FTE

# QBE & FTE Information

- QBE allotment sheet examples
- Budget Checkpoints
  - Initial and mid-term adjustment budgets.



DIRECT INSTRUCTIONAL COST	Earnings (\$)						Earned Positions Grades K-12													
	FTE	SALARY	OPERATING	QBE EARNINGS	LESS LOCAL 5 MILLS	STATE FUNDS	Teacher	Subj. Spec	Couns.	Tech. Spec										
Kindergarten Pgm	83	375,008	6,488	381,492	89,344	292,148	5.53		0.18	0.08										
Kindergarten Early Intrv Pgm	0	0	0	0	0	0	0.00			0.00										
Primary Grade(1-3) Pgm	0	0	0	0	0	0	0.00	0.00	0.00	0.00										
Primary Grd Early Intrv(1-3) Pgm	0	0	0	0	0	0	0.00	0.00	0.00	0.00										
Upper Elementary Grd(4-5) Pgm	0	0	0	0	0	0	0.00	0.00	0.00	0.00										
UppElem Grd Early Intrv(4-5)	0	0	0	0	0	0	0.00	0.00	0.00	0.00										
Middle Grade(6-8) Pgm	0	0	0	0	0	0	0.00	0.00	0.00	0.00										
Middle School(6-8) Pgm	33	97,883	2,324	100,007	23,421	76,586	1.65	0.10	0.07	0.03										
High School Gen Educ(9-12)	0	0	0	0	0	0	0.00		0.00	0.00										
CTAE(9-12) PGM	0	0	0	0	0	0	0.00		0.00	0.00										
Students with Disab Cat I	0	0	0	0	0	0	0.00			0.00										
Students with Disab Cat II	0	0	0	0	0	0	0.00			0.00										
Students with Disab Cat III	3	31,848	813	32,661	7,602	24,859	0.60			0.00										
Students with Disab Cat IV	0	0	0	0	0	0	0.00			0.00										
Students with Disab Cat V	1	6,853	422	7,075	1,657	5,418	0.13			0.00										
Gifted Student Category VI	0	0	0	0	0	0	0.00			0.00										
Remedial Education Pgm	0	0	0	0	0	0	0.00		0.00	0.00										
Alternate Education Pgm	0	0	0	0	0	0	0.00		0.00	0.00										
Eng.Spkr.s of Other Lang.(ESOL)	0	0	0	0	0	0	0.00		0.00	0.00										
Spec Ed. Itinerant				0	0	0														
Spec Ed. Supplemental Speech				0	0	0														
<b>TOTAL DIRECT INSTRU.</b>	<b>120</b>	<b>511,190</b>	<b>9,845</b>	<b>521,035</b>	<b>122,024</b>	<b>399,011</b>	<b>7.91</b>	<b>0.10</b>	<b>0.25</b>	<b>0.11</b>										
<b>INDIRECT COST</b>																				
Cent. Admin/ Tchrr. Sal Incr.		6,160	0	6,160	1,443	4,717						0.00	0.00			0.00	0.05	0.05	0.02	
School Admin		12,173	875	13,048	3,056	9,992								0.00	0.15	0.24				
Facility M & O			35,760	35,760	8,375	27,385														
Sub Total (INDIRECT COST)		18,333	36,635	54,968	12,874	42,094						0.00	0.00	0.00	0.15	0.24	0.00	0.05	0.05	0.02
<b>MEDIA CENTER PGM.</b>		12,836	1,753	14,589	3,417	11,172														0.24
20 DAYS ADDITIONAL INSTRUCTION		4,110		4,110	963	3,147														
STAFF & PROFESSIONAL DEV				2,965	694	2,271														
PRINCIPAL STAFF & PROF. DEV				329	77	252														
<b>MIDTERM HOLD HARMLESS</b>																				
Amended Formula Adjustment						(46,582)														
<b>QBE FORMULA EARNINGS</b>		<b>546,469</b>	<b>48,233</b>	<b>597,996</b>	<b>140,049</b>	<b>411,365</b>	<b>7.91</b>	<b>0.10</b>	<b>0.25</b>	<b>0.11</b>		0.00	0.00	0.00	0.15	0.24	0.00	0.05	0.05	0.02
<b>CATEGORICAL GRANTS</b>																				
Pupil Transportation Pgm (Includes 0 Drivers and bus replacement funds of 0)				0		0														
Sparsity - Regular				0		0														
Nursing Services				0		0														
<b>TOTAL EARNINGS FOR QUALITY BASIC EDUCATION</b>				<b>597,996</b>		<b>411,365</b>														
Education Equalization Funding Grant				0		0														
<b>TOTAL STATE FUNDING ON THIS ALLOTMENT SHEET</b>				<b>597,996</b>		<b>411,365</b>														
Charter Commission Admin - State						0														
Military Counselors						0														
CHBR One Month Employer Contrib. Holiday						0														
State Commission Charter Supplement				772,115		772,115														
<b>TOTAL FUNDING ON THIS ALLOTMENT SHEET</b>				<b>1,370,111</b>		<b>1,183,480</b>														

**NOTES**

- Expenditure controls as set forth in O.C.G.A. Section 20-2-167 are reinstated, subject to each district's approved flexibility contract.
- Health Insurance for Certificated Personnel is funded on a per member per month amount(PM/PM) of \$945.00, for an annual funding amount of \$11,340 in QBE under appropriation in FY 2021 (HB 793).
- Teacher Retirement is funded at 19.06% in QBE in FY 2021 (HB 793).

<b>Total T&amp;E</b>	<b>71,581</b>	includes T&E	<b>71,581</b>	and HI	<b>0</b>
----------------------	---------------	--------------	---------------	--------	----------

School System:							FY2023 Midterm				THE BASIC UNIT COST IS DEFINED TO BE THE AMOUNT OF \$2,897.28			
Earnings (\$)							Earned Positions Grades K-12							
DIRECT INSTRUCTIONAL COST	FTE	SALARY	OPERATING	QBE EARNINGS	LESS LOCAL 5 MILLS	STATE FUNDS	Teacher	Subj. Spec	Couns.	Tech. Spec				
Kindergarten Pgm	66	367,000	5,158	372,158	91,159	280,999	4.40		0.15	0.06				
Kindergarten Early Intr Pgm	0	0	0	0	0	0	0.00		0.00	0.00				
Primary Grade(1-3) Pgm	211	918,743	18,125	936,868	229,482	707,386	12.41	0.61	0.47	0.19				
Primary Grd Early Intrv(1-3) Pgm	0	0	0	0	0	0	0.00	0.00	0.00	0.00				
Upper Elementary Grd(4-5) Pgm	124	412,151	8,732	420,883	103,094	317,789	5.39	0.36	0.28	0.11				
UppElem Grd Early Intrv(4-5)	0	0	0	0	0	0	0.00	0.00	0.00	0.00				
Middle Grade(6-8) Pgm	0	0	0	0	0	0	0.00	0.00	0.00	0.00				
Middle School(6-8) Pgm	164	616,924	11,549	628,473	153,942	474,531	8.20	0.48	0.36	0.15				
High School Gen Educ(9-12)	0	0	0	0	0	0	0.00		0.00	0.00				
CTAE(9-12) PGM	0	0	0	0	0	0	0.00		0.00	0.00				
Students with Disab Cat I	15	126,819	3,734	130,553	31,978	98,575	1.87			0.01				
Students with Disab Cat II	3	31,175	394	31,569	7,733	23,836	0.46			0.00				
Students with Disab Cat III	18	242,835	3,676	246,511	60,382	186,129	3.60			0.02				
Students with Disab Cat IV	2	44,888	845	45,733	11,202	34,531	0.67			0.00				
Students with Disab Cat V	0	0	0	0	0	0	0.00			0.00				
Gifted Student Category VI	15	84,850	1,514	86,364	21,155	65,209	1.25			0.01				
Remedial Education Pgm	0	0	0	0	0	0	0.00		0.00	0.00				
Alternate Education Pgm	4	18,745	282	19,027	4,661	14,366	0.27		0.01	0.00				
Eng.Spkr.s of Other Lang.(ESOL)	6	58,815	345	59,160	14,491	44,669	0.86		0.01	0.01				
Spec Ed. Itinerant				0	0	0								
Spec Ed. Supplemental Speech				0	0	0								
<b>TOTAL DIRECT INSTRU.</b>	<b>628</b>	<b>2,922,945</b>	<b>54,354</b>	<b>2,977,299</b>	<b>729,279</b>	<b>2,248,020</b>	<b>39.38</b>	<b>1.45</b>	<b>1.28</b>	<b>0.56</b>				
INDIRECT COST											Earned Positions			
Cent. Admin		51,714	0	51,714	12,667	39,047					Supt.	Asst Supt	Prin.	Asst Prin.
School Admin		158,496	4,519	163,015	39,930	123,085								
Facility M & O			187,144	187,144	45,840	141,304								
Sub Total (INDIRECT COST)		210,210	191,663	401,873	98,437	303,436								
MEDIA CENTER PGM		83,998	9,096	93,094	22,803	70,291								1.25
20 DAYS ADDITIONAL INSTRUCTION		25,441		25,441	6,232	19,209								
STAFF & PROFESSIONAL DEV				15,881	3,890	11,991								
PRINCIPAL STAFF & PROF. DEV				349	85	264								
MIDTERM HOLD HARMLESS				260,875	63,900	196,975								
Health Insurance Incr.(6 MO New Rate).						53,700								
Charter System Adjustment				0		0								
<b>QBE FORMULA EARNINGS</b>		<b>3,242,594</b>	<b>255,113</b>	<b>3,774,812</b>	<b>924,626</b>	<b>2,903,886</b>	<b>39.38</b>	<b>1.45</b>	<b>1.28</b>	<b>0.56</b>	<b>0.00</b>	<b>0.00</b>	<b>1.00</b>	<b>0.84</b>
CATEGORICAL GRANTS							<b>NOTES</b> 1. Expenditure controls as set forth in O.C.G.A. Section 20-2-167 are reinstated, subject to each district's approved flexibility contract. 2. Health Insurance for Certificated Personnel is funded on a per member per month amount(PM/PM) of \$945.00 for July 2022 through Dec 2022 amount of \$5,670 in QBE under appropriation in FY23(HB 18). 3. Health Insurance for Certificated Personnel is also funded on a per member per month amount(PM/PM) of \$1,580.00 for Jan 2023 through June 2023 amount of \$9,480 in QBE under appropriation in FY23(HB 18). 4. Teacher Retirement is funded at 19.98% in QBE in FY 2023 (HB 911).							
Pupil Transportation Pgm (Includes 0 Drivers and bus replacement funds of 0)				0		0								
Sparsity - Regular				0		0								
Nursing Services				20,420		20,420								
<b>TOTAL EARNINGS FOR QUALITY BASIC EDUCATION</b>				<b>3,795,232</b>		<b>2,924,306</b>								
Education Equalization Funding Grant				0		0								
<b>TOTAL STATE FUNDING ON THIS ALLOTMENT SHEET</b>				<b>3,795,232</b>		<b>2,924,306</b>								
Charter Commission Admin - State						-133,347								
Primary Counselors						0								
Local Charter Supplement						0								
State Commission Charter Supplement				4,783,632		4,783,632								
<b>TOTAL FUNDING ON THIS ALLOTMENT SHEET</b>				<b>8,578,864</b>		<b>7,574,591</b>								
							<b>Total T&amp;E</b>	<b>939,061</b>	includes T&E		553,501	and HI		385,560

# Coming Soon: Supplement Detail Sheet



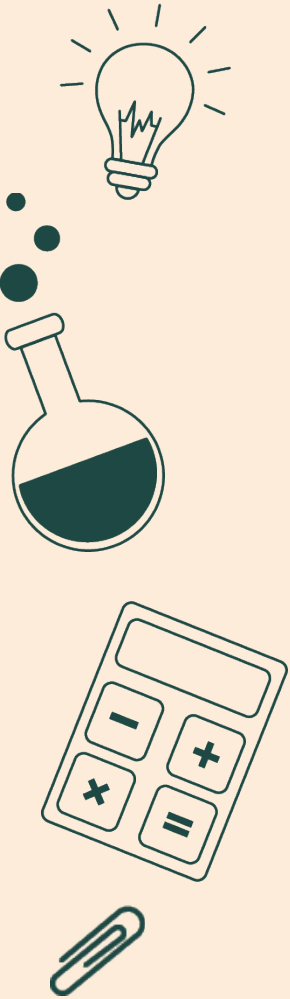
State Charter Supplement Detail Sheet			
Super Awesome Charter School	Input	Amount per FTE	Total
Total FTEs	180		
Transportation per FTE	No	\$ -	\$ -
Nutrition per FTE	Yes	\$ 14.00	\$ 2,520.00
Attendance Zone (Base Supplement)	Statewide	\$ 5,053.00	\$ 909,540.00
Location (Capital Outlay)	DeKalb County	\$ 1,304.00	\$ 234,720.00
<b>Estimated Total</b>			<b>\$ 1,146,780.00</b>

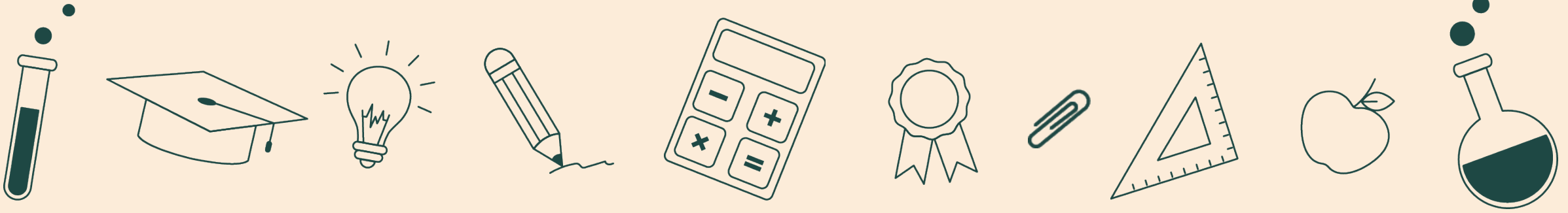


# Helpful Resources

# Helpful Resources

- [GaDOE Financial Review Website](#)
- [School System Revenue/Expenditure Reports](#)
- [QBE Reports](#)
- [Data Collection \(gadoe.org\)](#)
- [Full Time Equivalent \(FTE\) \(gadoe.org\)](#)





# Contact Us

**Website:** [scsc.georgia.gov](http://scsc.georgia.gov)

**Twitter:** @SCSCGa

**Address:** 504 Twin Towers West,  
205 Jesse Hill Jr. Dr., SE,  
Atlanta, GA 30334

**Phone:** (404) 656-2837



