



STATE CHARTER SCHOOLS COMMISSION OF GEORGIA

2015-2016 Academic Accountability Update

Release Date: May 2017

TABLE OF CONTENTS

EXECUTIVE SUMMARY	
Assessing State Charter School Performance With A Comprehensive Performance Framework (CPF)	3
Academic Metrics within the CPF	4
2015-2016 CPF Academic Standings	5
State Charter School Performance (Overall), CPF Indicators	6
State Charter School Performance (by Grade Band), CPF Indicators	7
SECTION 1: COLLEGE AND CAREER READINESS PERFORMANCE INDEX (CCRPI)	
College and Career Readiness Performance Index (CCRPI): Categories, Points, and Weights	8
CCRPI Performance Comparisons, Table 1.1, CCRPI Single Scores	9
CCRPI Performance Comparisons, Table 1.2, CCRPI School Scores by Grade Band	10
SECTION 2: VALUE-ADD ANALYSIS (VAA)	
VAA: Overview and Explanation	11
Table 2.1, Value-Added Performance by Grade Band	13
SECTION 3: BEATING THE ODDS (BTO)	
BTO: Overview & Explanation	15
Table 3.1, 2016 BTO Determinations by School	16
SECTION 4: SCHOOL LEVEL PROFILES	
Atlanta Heights	17
Statesboro Steam College Career Arts & Technology Academy (CCAT)	18
Cherokee Charter Academy	20
Coweta Charter Academy	21
Dubois Integrity Academy	22
Foothills Education Charter High School	23
Fulton Leadership Academy	24
Georgia Connections Academy (Virtual)	26
Georgia Cyber Academy (Virtual)	28
Georgia School For Innovation and the Classics	30
Graduation Achievement Charter High School (Formerly Provost Academy) (Virtual)	31
International Charter School of Atlanta	32
Ivy Preparatory Academy Kirkwood	33
Ivy Preparatory Academy Gwinnett	34
Mountain Education Charter High School	35
Odyssey School	36
Pataula Charter Academy	37
Scintilla Charter Academy	39
Utopian Academy For the Arts	40

SECTION 5: TREND DATA – STATE CHARTER SCHOOL PERFORMANCE OVER TIME	
Table 5.1, Historical CPF Standings	41
Table 5.2, Historical CCRPI Performance	42
Table 5.3, Historical Value-Added Impact Scores	44
Table 5.4, Historical BTO Designations	45
APPENDICES:	
Table A, Academic Designations Issued By State Education Agencies	46
Table B, CCRPI Achievement Sub-Score by Grade Band	47
Table C, CCRPI Progress Sub-Score by Grade Band	49

EXECUTIVE SUMMARY

ASSESSING STATE CHARTER SCHOOL PERFORMANCE: SCSC Comprehensive Performance Framework

In 2016, the SCSC adopted a Comprehensive Performance Framework (CPF) to set forth clear, quantifiable, rigorous, and attainable goals in the areas of academic achievement, financial viability, and organizational compliance. A school's performance on the CPF informs SCSC decision making over the course of the charter term and at renewal. The academic portion of the CPF assesses a variety of indicators and measures to answer the following fundamental question: is the educational program offering students a better educational opportunity than they would otherwise receive at a traditional public school?

State Charter Schools are expected to meet standards during every year of the charter term; however, a school will be considered eligible for renewal if it meets academic, financial, and operational standards at least 75% of the time (in 3 out of the first 4 years of a 5-year charter contract term).

In any year of the charter term, a state charter school may satisfy annual academic accountability requirements through its performance on "first look" indicators that include:

- meeting federal accountability requirements, and
- exceeding the average performance level of the district(s) within its attendance zone in terms of student achievement on state standardized assessments (grade-band CCRPI Achievement Score) OR in terms of student growth (grade-band CCRPI Scores).

OR

In the event "first look" objectives are not achieved; a state charter school may still meet SCSC academic standards through its performance on "second look" indicators that include:

- earning a higher CCRPI single score than the average CCRPI single score of the district(s) it serves,
- earning a positive value-add impact score in relation to value-add impact score of the district(s) it serves in all relevant grade bands, and/or
- being designated as "Beating the Odds" by the Governor's Office of Student Achievement (GOSA) and the Georgia Department of Education (GaDOE).

Additional information on each of the CPF metrics used to assess the academic performance of state charter schools is outlined in Sections 1-3 of this briefing document. Those metrics include:

- College and Career Performance Readiness Index (CCRPI) Scores (Achievement and Progress)
- Value-Added Impact Score
- Beating the Odds Designation

ACADEMIC METRICS WITHIN THE COMPREHENSIVE PERFORMANCE FRAMEWORK: CCRPI, Value-Added Impact, and Beating the Odds

In 2012, Georgia was one of 10 states granted a waiver for a portion of the accountability requirements of the Elementary and Secondary Education Act (ESEA), more commonly known as No Child Left Behind (NCLB). This waiver allowed the state to use a new accountability measure—the **College and Career Readiness Performance Index (CCRPI)**—to replace the previously used Adequately Year Progress (AYP) determination. The CCRPI is designed to communicate school performance data in a more comprehensive manner than the previous pass/fail system associated with NCLB’s Adequate Yearly Progress (AYP). The CCRPI produces composite scores that are intended to convey how well schools are performing on a 110-point scale. The overall score is based on a school’s performance in three major categories: 1) academic achievement, 2) student growth and progress, and 3) achievement gap reduction.

In addition to evaluating CCRPI performance, the State Charter Schools Commission (SCSC) also assesses state charter schools based on their ability to positively impact the unique student populations they serve. To accomplish this, the SCSC utilizes two different predictive measures: the school-level Beating the Odds determination published by GaDOE and 2) the value-added impact score published by the SCSC. The **Beating the Odds (BTO)** approach uses *school-level data* to compare predicted and actual school effectiveness scores based on a cross-sectional analysis (thus determining whether a school “beats” its expected performance). The **Value-Added Approach (VAA)** utilizes *student-level data* AND *school-level data* within a value-added model that includes statistical controls for observable student characteristics and prior academic performance to generate an “impact score” for each school.

Because state charter schools serving atypical or disproportionately disadvantaged student populations could possibly be at a disadvantage *if* average student achievement levels were used as the sole yardstick for performance, the SCSC allows schools to satisfy academic requirements through alternative measures like BTO and VAA. These measures—in addition to average achievement levels—allow the SCSC to measure a school’s contribution to student performance while mitigating the impact of a student’s demographic, academic, and socio-economic background on his/her current achievement level. Both BTO and VAA adjust for the observable characteristics of students so that schools can be equitably compared regardless of their differing student populations.

While BTO, VAA and the CCRPI are all useful school-level accountability tools, they were created for different purposes and include different performance indicators. As a result, comparisons between CCRPI scores and the BTO/VAA are sometimes difficult to make. For instance, because BTO/VAA scores are produced by comparing actual and predicted student performance on state accountability metrics while also controlling for student demographics, there are instances in which the following scenarios may occur:

A school may be outperforming its comparison district on the CCRPI, yet it has a negative value-add impact score and/or is not “beating the odds”. This indicates that the school’s actual performance was lower than its predicted performance (given the characteristics and performance history of the school’s student population). In other words, the school was predicted to perform at an even higher level.

A school may not be outperforming its comparison district on the CCRPI, yet it has a positive value-add impact score and/or is “beating the odds”. This indicates that the school’s actual performance exceeds its predicted performance (given the characteristics and performance history of the school’s student population). In other words, the school was predicted to perform at a lower level.

Statistical Controls¹ Used in the 2015-2016 Value-Added Analysis include:

At the student level--1) Prior-year test scores, 2) gender, 3) foreign-born indicator, 4) race/ethnicity, 5) ESOL enrollment, 6) free/reduced-price lunch eligibility, 7) gifted status, 8) primary-language-not-English indicator, 9) disability status (fifteen specific disability categories), 10) number of schools attended in the current year, 11) an indicator for students who changed schools from the prior year, 12) number of disciplinary incidents in the prior year, 13) attendance in the prior year, and 14) the difference between a student's age (in months) and the modal age of students in the same grade (i.e. "overage" in grade) 15) previously withdrawn for reasons identified as risk factors, 16) late enrollees, and

At the school level-- the proportion of 1) directly certified students, 2) limited English proficiency students, and 3) students with disabilities.

Statistical Controls Used in the 2015-2016 Beating the Odds Calculation Include:

At the school level-- 1) Race, 2) disability status, 3) ESOL enrollment, 4) free/reduced-price lunch eligibility, 5) directly certified, 6) enrollment count, 7) grade cluster, and 8) churn rate.

2015-2016 CPF Academic Standings

School	Met Academic Standards?	CPF Academic Score
Atlanta Heights	Y	97
Statesboro STEAM CCAT	N	61
Cherokee Charter Academy	N	61
Coweta Charter Academy	Y	97
DuBois Integrity Academy	N	1
Foothills Education Charter HS	N	1
Fulton Leadership Charter Academy	N	2
Georgia Connections Academy	N	0
Georgia Cyber Academy	N	1
Georgia School for Innovation and the Classics	N	1
Graduation Achievement Charter HS (formerly Provost)	N	0
International Charter School of Atlanta	Y	97
Ivy Preparatory Academy at Gwinnett	Y	97
Ivy Prep Academy at Kirkwood for Girls	N	61
Mountain Education Center	Y	97
Odyssey	Y	97
Pataula	Y	98
Scintilla Charter Academy	N	1
Utopian	N	1

¹ The following controls were new in 2015-2016 and were not previously included in the SCSC's VAM model: A) previously withdrawn for reasons identified as risk factors (student level), B) Late enrollees (student level), C) directly certified students (school level), D) limited English proficiency students (school level), and E) students with disabilities (school level).

2015-2016 STATE CHARTER SCHOOL PERFORMANCE: Comprehensive Performance Framework (CPF) Indicators

Performance on “First Look” CPF Indicators

CCRPI Achievement:

16% of state charter schools outperformed their comparison districts as measured by CCRPI Achievement scores in all grade bands served. Those schools were:

- Coweta Charter Academy
- International Charter School of Atlanta, and
- Ivy Prep Academy at Gwinnett.

CCRPI Progress/Growth:

One (5%) state charter school outperformed its comparison district as measured by CCRPI Progress scores in all grade bands served. That school was:

- Odyssey Charter School.

Performance on “Second Look” CPF Indicators

CCRPI Single Score (Overall School Performance):

11% of state charter schools outperformed their comparison districts as measured by overall CCRPI single scores. Those schools were:

- Coweta Charter Academy and
- Pataula Charter Academy.

Value-Added Impact on Student Achievement:

No (zero) state charters outperformed their comparison districts in terms of value-added impact in all grade bands served. However, 42% of all state charters performed at the same level as comparison districts in all grade bands served or in all grade bands in which they were not outperforming their comparison districts. (Performing at the same level = the difference between the school’s score and the district’s score is not statistically significant.)

Beating the Odds:

16% of state charter schools earned a higher CCRPI score than predicted by GaDOE (thus “beating” their expected performance). Those schools were:

- Atlanta Heights Charter School,
- Mountain Education Charter High School², and
- Pataula Charter School

² After the initial release of BTO results for the 2015-16 school year, GOSA identified an error in the calculations. Upon fixing the error and re-running the calculations, Mountain Education Charter High School was no longer designated as “Beating the Odds”, however, GOSA and the GaDOE decided to “hold harmless” the schools that were originally “Beating the Odds” but are no longer in that category. Thus, the school is still identified as meeting SCSC academic standards for the 2015-16 school year. For more information visit: <http://gosa.georgia.gov/beating-odds-analysis>.

2015-2016 STATE CHARTER SCHOOL PERFORMANCE: Comprehensive Performance Framework (CPF) Indicators

Performance by Grade Band on “First Look” CPF Indicators

CCRPI Achievement:

- 33% of state charters serving students in **elementary** grades (K-5) outperformed comparison districts.
- 23% of state charters serving students in **middle** grades (6-8) outperformed comparison districts.
- 0% of state charters serving students in **high** school grades (9-12) outperformed comparison districts.

CCRPI Progress/Growth:

- 25% of state charters serving students in **elementary** grades (K-5) outperformed their comparison districts.
- 23% of state charters serving students in **middle** grades (6-8) outperformed their comparison districts.
- 10% of state charters serving students in **high** school grades (9-12) outperformed their comparison districts.

Performance by Grade Band on “Second Look” CPF Indicators

Value-Added Impact:

- 0% of state charters serving students in **elementary** grades outperformed comparison districts.
 - 50% of state charters serving students in **elementary** grades performed at the same level as comparison districts.
- 15% of state charters serving students in **middle** grades outperformed comparison districts.
 - 23% of state charters serving students in **middle** grades performed at the same level as comparison districts.
- 0% of state charters serving students in **high** school grades outperformed comparison districts.
 - 60% of state charters serving students in **high** school grades performed at the same level as comparison districts in the majority of subjects tested.

CCRPI Single Score:

- The “single score” serves as the overall school score and is calculated when the school configuration includes multiple grade bands (i.e. elementary, middle, and high school). Therefore, no individual grade band designations are available.

BTO:

- BTO is only determined at the school level. No individual grade band designations are available.

SECTION 1: COLLEGE AND CAREER READINESS PERFORMANCE INDEX (CCRPI)

CCRPI: Categories, Points, and Weighting

The CCRPI is the official state accountability metric for public schools in Georgia. A school's CCRPI sub-scores in the areas of "achievement" and "progress" represent "first look" performance indicators within the SCSC's Comprehensive Performance Framework (CPF). A school's CCRPI "single" score is included in the CPF as one of three "second look" performance indicators through which schools can satisfy the annual academic requirements of their charter.

A school and district's overall CCRPI score is based on points earned in three major areas:

1. **Achievement** (50 possible points; 45% of total possible score)
 - Content Mastery on state standardized assessments in core subjects. (20 points)
 - Post School Readiness (e.g.: career pathways, ACT/SAT/AP/IB exam performance, world language coursework, reading/writing skills, and attendance). (15 points)
 - Graduation rate (Four- and five-year graduation rates with more weight given to the four-year rate) in high school or a "Predictor for High School Graduation" for elementary and middle schools (Percent of students' assessments scoring at Proficient or Distinguished Learner on Georgia Milestones End of Grade [EOG] exams).³ (15 points)
 2. **Progress/ Growth** (40 possible points; 36.4% of total possible score)
 - Measured by the percentage of students earning typical or high growth on state assessments. This percentage is derived from Student Growth Percentiles (SGPs), which compare a student's growth with other students with similar past achievement.³
 3. **Achievement Gap Reduction** (10 possible points; 9% of total possible score)
 - Based upon schools' achievement gap size and change in that gap. The gap is measured between the schools' bottom 25% of students and the state average.³
- In addition to the three major areas, schools may receive "Challenge Points" to add to their scores (up to 10 possible points).
- Schools may receive these points if they have a significant number of Economically Disadvantaged students, English Language Learner students and Students with Disabilities meeting expectations.
 - Schools can also receive points for going beyond the targets of the CCRPI by challenging students to exceed expectations and participate in college and career ready programs.¹

³ Woods, Richard. (2016). [Understanding the CCRPI ILC PPT 02.25.16](#) [PowerPoint slides] Retrieved from GaDOE website <http://www.gadoe.org/Curriculum-Instruction-and-Assessment/Accountability/Pages/default.aspx>

CCRPI:
2015-2016 Performance Comparisons—State Charters and Local Districts

TABLE 1.1, CCRPI Single Score — *100 Possible Points*

E = Elementary, M = Middle, H =High

School Name	Grade Bands served	Single Score	Comparison District	District Score	District Score (weighted by grade bands served by school)	Outperforming the District?
Atlanta Heights Charter School	E, M	59.9	APS	65.2	65.7	N
Cherokee Charter Academy	E, M	77.6	Cherokee	81.6	79.7	N
Coweta Charter Academy	E, M	74.0	Coweta	75.2	73.3	Y
Dubois Integrity Academy	E, M	33.8	Clayton	64.1	63.4	N
Foothills Charter High School	H	46.7	Statewide	73.6	76.1	N
Fulton Leadership Academy	M, H	62.0	Fulton	74.7	75.8	N
Georgia Connections Academy	All	61.2	Statewide	73.6	73.6	N
Georgia Cyber Academy	All	59.3	Statewide	73.6	73.6	N
Georgia School for Innovation and the Classics	E, M	54.9	Statewide	73.6	72.6	N
Graduation Achievement Charter High School (formally Provost Academy)	H	44.1	Statewide	73.6	76.1	N
International Charter School of Atlanta	E	70.1	Statewide	73.6	72.8	N
Ivy Prep Academy at Kirkwood for Girls	E, M	50.9	DeKalb, APS	66.6,65.2	63.7, 65.7	N
Ivy Preparatory Academy at Gwinnett	M	68.2	Gwinnett, Fulton, DeKalb	83,74.7,66.6	82.1, 70.8, 65.1	N
Mountain Education Center School	H	57.3	Statewide	73.6	76.1	N
Odyssey School	E, M	71.6	Coweta	75.2	73.3	N
Pataula Charter Academy	All	77.1	Baker, Calhoun, Clay, Early, Randolph	62,64.1,61.4, 71.5,56.5	62,64.1,61.4, 71.5,56.5	Y
Scintilla Charter Academy	E	53.2	Lowndes, Valdosta City Schools	82.2, 65.9	84.6, 68.6	N
Statesboro STEAM CCAT	M, H	64.3	Bulloch	71.6	72.3	N
Utopian Academy for the Arts	M	57.9	Clayton	64.1	64.0	N

Notes:

For schools that do not serve all grades bands, their CCRPI Single Score is compared to a recalculated district CCRPI Single Score that is weighted to include only the grade bands the school serves.

It is worth noting that Pataula Charter Academy outperformed the five-district average and outperformed all 5 districts (individually).

TABLE 1.2, CCRPI School Scores by Grade Band— (100 Possible Point)

E = Elementary, M = Middle, H =High

School Names	Grade Cluster	CCRPI Score	Comparison District	District Score	Outperforming the District?
Atlanta Heights Charter School	E	58.7	APS	65.6	N
Cherokee Charter Academy	E	78.4	Cherokee	77.9	Y
Coweta Charter Academy	E	74.7	Coweta	70.8	Y
Dubois Integrity Academy	E	33.8	Clayton	62.7	N
Georgia Connections Academy	E	59.8	Statewide	71.7	N
Georgia Cyber Academy	E	58.1	Statewide	71.7	N
Georgia School for Innovation and the Classics	E	55.4	Statewide	71.7	N
International Charter School of Atlanta	E	70.1	Statewide	71.7	N
Ivy Prep Academy at Kirkwood for Girls	E	43.9	DeKalb, APS	62,65.6	N
Odyssey School	E	71.8	Coweta	70.8	Y
Pataula Charter Academy	E	85.4	Baker, Calhoun, Clay, Early, Randolph	48.7,55.1,63.1,74.8,53.7	Y
Scintilla Charter Academy	E	53.2	Lowndes, Valdosta City	83, 67.3	N
Middle School					
Atlanta Heights Charter School	M	63.6	APS	61.5	Y
Cherokee Charter Academy	M	75.1	Cherokee	81.3	N
Coweta Charter Academy	M	71.3	Coweta	74.6	N
Fulton Leadership Academy	M	65.5	Fulton	70.4	N
Georgia Connections Academy	M	62.2	Statewide	71.5	N
Georgia Cyber Academy	M	61.5	Statewide	71.5	N
Georgia School for Innovation and the Classics	M	51.9	Statewide	71.5	N
Ivy Prep Academy at Kirkwood for Girls	M	69.6	APS, DeKalb	61.5,64.6	Y
Ivy Preparatory Academy at Gwinnett	M	68.2	Gwinnett, Fulton, DeKalb	81.4,70.4,64.6	N
Odyssey School	M	71.3	Coweta	74.6	N
Pataula Charter Academy	M	69.3	Barker, Calhoun, Clay, Early, Randolph	67.6,57.7,54.3,76.4,51.2	Y
Statesboro STEAM CCAT	M	54.8	Bulloch	69.7	N
Utopian Academy for the Arts	M	57.9	Clayton	63.5	N
High School					
Foothills Charter High School	H	46.7	Statewide	75.7	N
Fulton Leadership Academy	H	54.6	Fulton	79.1	N
Georgia Connections Academy	H	61.3	Statewide	75.7	N
Georgia Cyber Academy	H	58.2	Statewide	75.7	N
Graduation Achievement Charter High School	H	44.1	Statewide	75.7	N
Ivy Prep Academy at Kirkwood for Girls**	H	NA	DeKalb, APS	73.7,63.3	N/A
Ivy Preparatory Academy at Gwinnett **	H	NA	Gwinnett, Fulton, DeKalb	80.7,79.1,73.7	N/A
Mountain Education Center School	H	57.3	Statewide	75.7	N
Pataula Charter Academy	H	67.7	Baker, Calhoun, Clay, Early, and Randolph	80.8,81, N/A,61.7,60.4	N
Statesboro STEAM CCAT	H	76	Bulloch	73.9	Y

** Denotes that the school closed before students took the annual standardized assessments, thus no scores can be generated.

SECTION 2: VALUE-ADD APPROACH (VAA)

VAA: Overview and Explanation

The Value-Added Approach (VAA) allows the SCSC to measure a school's contribution to student performance while mitigating the impact of a student's demographic, academic, and socio-economic background on his/her current achievement level. The VAA adjusts for the observable characteristics of students so that schools can be equitably compared regardless of their differing student populations.

A school's value-added impact score is considered a "second look" performance indicator within the SCSC's Comprehensive Performance Framework, and schools may satisfy academic requirements by demonstrating a higher value-added impact on student achievement than their comparison district(s).

Explanation of the Value-Added Method

The value-added method adjusts all student-level test scores to a normalized score so the statewide mean is zero and the standard deviation is one.

- Example: If a student scores in the 95th percentile he/she would have a normalized score of 1.96 because—with a bell-shaped distribution—5 percent of scores are 1.96 or more standard deviations above the mean score. Similarly, a student whose score equals the statewide average would have a normalized score of zero.

Using normalized scores, the value-added method estimates the relationship between current test scores and A) prior test scores, B) observable student characteristics like free/reduced-price lunch status, disability status, gender, etc., and C) school level controls for the proportion of directly certified students, limited English proficient students, and students with disabilities.

- Example: When estimating the effect of student characteristics on 9th-grade Lit. EOCT scores, the impact of being female is 0.114. Meaning all else being equal, girls—on average—have a normalized score that is 0.114 higher than boys.

Using estimated impacts of prior scores and student characteristics, the value-added method enables the construction of a predicted score for each student. Once determined, this predicted score is compared to the student's actual score.

- Example: If a student does as well as expected based on his/her observable characteristics and prior scores, the difference between the student's actual and predicted scores will equal zero.

To obtain an estimate of a school's effect (or its impact on student achievement), the difference between the estimated and actual performance of each student is regressed on a set of school indicators. The school value-added estimates represent the performance of a school relative to other schools with similar-looking student bodies.

- Example: If all the students in a school were performing as well as one would expect based on their observable characteristics, prior scores, and school level indicators, the school effect would equal zero. These school effects are calibrated so that the average school in the state should have a school effect of zero.

Statistical Controls Used in the Value-Added Analysis

At the student level⁴: 1) Prior-year test scores⁵, 2) gender, 3) foreign-born indicator, 4) race/ethnicity, 5) ESOL enrollment, 6) free/reduced-price lunch eligibility, 7) gifted status, 8) primary-language-not-English indicator,

⁴ The 2015-2016 VAA includes two additional student level controls that were not utilized in previous years: 1) previously withdrawn for reasons identified as risk facts and 2) late enrollees.

⁵ Prior to 2014-15 Georgia used the Criterion Referenced Competency Test (CRCT) for all five subject areas in grades 3-8. These CRCT scores are used to control for student ability and prior educational inputs.⁵ For high school students prior to 2014-15, End-of-Course-Tests (EOCT) scores in Math (Analytic Geometry, Coordinate Algebra, Math II), ELA (9th Grade Literature and Composition, American Literature and Composition), Science (Biology, Physical Science) and Social Studies (U.S. History, Economics) were employed. For the analysis of EOC scores, 8th grade CRCT scores in all five subjects are used as controls. Because the CRCT does not vertically align scale scores over time, and the CRCT and End-of-Course tests can vary from year to year, all scale scores are converted to normal-curve equivalents (z-scores) based on the testing population in the state for each grade, year, and subject. Thus, school effect estimates are measured in standard deviation units or "effect sizes."

9) disability status (fifteen specific disability categories), 10) number of schools attended in the current year, 11) an indicator for students who changed schools from the prior year, 12) number of disciplinary incidents in the prior year, 13) attendance in the prior year, and 14) the difference between a student's age (in months) and the modal age of students in the same grade (i.e. "overage" in grade), 15) previously withdrawn for reasons identified as risk factors, 16) late enrollees.

At the school level⁶: the proportion of 1) directly certified students, 2) limited English proficiency students, and 3) students with disabilities.

Value-Added Impact Scores by Grade Band

The value-add impact score measures the impact of a school on student performance while controlling for the school's student population. **Single** value-added impact scores that represent all-subject averages are generated for schools serving elementary and middle school grade bands. **Multiple** impact scores are generated across each subject area for schools serving a high school grade band. The reasons for this are outlined as follows:

1. The standardized assessment administered in grades 3-8 in 2015-2016 are the Milestones End-of-Grade (EOG) exams which assess all five subject areas—Math, Science, English/Language Arts, Reading, and Social Studies—in each grade level every year. Therefore, an all-subject average can be computed for all elementary and middle schools even if they only served a single grade in a school level (e.g. a K-6 school with test scores in elementary grades 3-5 and test scores for the middle grade 6).
2. The standardized assessments administered in grades 9-12 in 2015-2016 are the Milestones End-Of-Course exams (or EOCs). Each school usually administers a specific EOC in only one grade, and most state charter schools did not serve all grade levels 9-12 in 2015-2016. The few schools that *did* serve all grade levels 9-12 in 2015-2016 had small enough cohorts in one or more grade level that value added scores were not available for all EOC subjects. Thus, the subjects for which value-added information is available would have been too varied to provide a meaningful all-subject average.

A state charter school serving elementary and/or middle school grade bands is considered "outperforming" if its overall impact on student performance exceeds that of its comparison district(s) as measured by an all-subject average. A state charter school serving a high school grade band is considered "outperforming" if the school's overall impact on student performance exceeds that of its comparison district(s) in the majority of the End-Of-Course assessments it administers.

No state charters outperformed their comparison districts in all relevant grade bands served in 2016.

⁶ The inclusion of school level controls is new to the VAA in 2015-16. These additions to the model are intended to further "level the playing field" by not only controlling for the characteristics of each student, but also the general school context.

**VAA:
2015-2016 State Charter School Performance**

TABLE 2.1, Value-Added Performance by Grade Band

E = Elementary, M = Middle, H =High

School Names	Grade Cluster	2015-2016 School Effect	Comparison District	2015-2016 District Effect	Outperforming the District?
Atlanta Heights Charter School	E	0.0145	APS	0.0257	N
Cherokee Charter Academy	E	-0.0009	Cherokee	0.0189	N
Coweta Charter Academy	E	-0.0648	Coweta	-0.0683	N
DuBois Integrity Academy	E	-0.2452*	Clayton	0.0041	N
Georgia Connections Academy	E	-0.1140*	Statewide	0	N
Georgia Cyber Academy	E	-0.1598*	Statewide	0	N
Georgia School for Innovation and the Classics	E	-0.1943*	Statewide	0	N
International Charter School of Atlanta	E	-0.0434	Statewide	0	N
Ivy Prep Academy at Kirkwood for Girls	E	-0.1969*	DeKalb, APS	-0.0096	N
Odyssey School	E	-0.0548	Coweta	-0.0683	N
Pataula Charter Academy	E	0.1212	Baker, Calhoun, Clay, Early, Randolph	0.0523	N
Scintilla Charter Academy	E	-0.1681*	Lowndes, Valdosta City	0.0212	N
All Schools	E	N/A		0	
Atlanta Heights Charter School	M	0.0489*	APS	-0.0165	Y
Statesboro STEAM (CCAT)	M	-0.2413*	Bulloch	-0.0152	N
Cherokee Charter Academy	M	-0.1008*	Cherokee	0.0049	N
Coweta Charter Academy	M	-0.0921*	Coweta	-0.0209	N
Fulton Leadership Academy	M	0.0039*	Fulton	-0.0497	Y
Georgia Connections Academy	M	-0.0827*	Statewide	0	N
Georgia Cyber Academy	M	-0.1084*	Statewide	0	N
Georgia School for Innovation and the Classics	M	-0.1506*	Statewide	0	N
Ivy Prep Academy at Gwinnett	M	-0.1074*	Gwinnett, Fulton, DeKalb	-0.0187	N
Ivy Prep Academy at Kirkwood for Girls	M	0.0405	APS, DeKalb	-0.0252	N
Odyssey School	M	-0.0395	Coweta	-0.0209	N
Pataula Charter Academy	M	-0.1116*	Barker, Calhoun, Clay, Early, Randolph	0.0454	N
Utopian Academy for the Arts	M	0.0078	Clayton	0.0222	N
All Schools	M	N/A		0	

<i>(Table 2.1, Continued)</i>		Comparison District	Outperformed the district in the majority of tested subjects?
Statesboro STEAM (CCAT)	H	Bulloch	N
Foothills Charter High School	H	Statewide	N
Fulton Leadership Academy	H	Fulton	N
Georgia Connections Academy	H	Statewide	N
Georgia Cyber Academy	H	Statewide	N
Graduation Achievement Charter High School	H	Statewide	N
Ivy Prep Academy at Gwinnett	H	DeKalb, APS	N/A
Ivy Prep Academy at Kirkwood for Girls	H	Gwinnett, Fulton, DeKalb	N/A
Mountain Education Center School	H	Statewide	N
Pataula Charter Academy	H	Baker, Calhoun, Clay, Early, and Randolph	N
All Schools	H		

*Denotes that the school's impact on student achievement is statistically significant (either higher or lower) than the district's impact on student achievement

Notes:

Ivy Prep Academy at Gwinnett and Ivy Prep Academy at Kirkwood for Girls high school program closed before students took the annual standardized assessments, thus no high school score can be generated.

Single value-added impact scores are generated for elementary and middle school grade bands (which represent all-subject averages). Multiple impact scores are generated for high schools across each subject area because the standardized assessments administered in high schools are End-Of-Course tests (or EOCs). See p. 11 for additional explanation.

SECTION 3: BEATING THE ODDS

BTO: Overview and Explanation

Beating the Odds (BTO) was developed by the Georgia Department of Education (GaDOE) to measure the performance of charter schools on an annual basis. Like the SCSC's value-added impact score, BTO is a predictive performance measure that compares how a school *should* perform based on its unique student and/or school characteristics with a school's *actual* performance.

A school's BTO designation is considered a "second look" performance indicator within the SCSC's Comprehensive Performance Framework (CPF), and schools may satisfy academic requirements by earning a higher CCRPI score than predicted based on their student population and school characteristics (thus "beating the odds").

The primary difference between SCSC's Value-Added Analysis (VAA) and GaDOE's BTO is the base unit of analysis. In short: VAA uses student-level data to determine a school's impact on performance and BTO uses school-level data. As a result, VAA and BTO employ different statistical controls to mitigate the impact of a student characteristics on school performance. Currently, the BTO and VAM are fairly good predictors of each other. The majority of the time, if the BTO estimates a school to be "effective" --so will the VAM. However, there are instances where the two models might produce divergent outcomes because of the differences in the independent variables employed by each model so the SCSC allows state charter schools to satisfy academic expectations through EITHER predictive measure (the VAA *OR* the BTO).

In 2016, two regression models of Beating the Odds were calculated that measure economically disadvantaged students in different ways. The first model⁷ is identical to prior years, while the second model⁸ uses direct certification data rather than the percentage of FAY students who qualify for free or reduced price lunch (FRL). Schools that "beat the odds" in either model are deemed as "beating the odds."

⁷ In 2015 and prior years for the measure of economically disadvantaged students, the model has included the percentage of FAY students who qualify for free or reduced-price lunch (FRL), and a variable that indicates whether the school participated in Provision 2 of the Special Assistance Alternatives (SAS) or the Community Eligibility Provision (CEP), as provided by the Georgia Department of Education's School Nutrition Program. The percentage FRL is recoded to equal 100% for all CEP and SAS schools since these schools do not have to collect lunch eligibility information from parents and instead are allowed to report 100% FRL, even though not all students meet the income requirements.

⁸ Because FRL data is no longer a reliable statewide proxy for the economically disadvantaged student population, the second Beating the Odds model that was run in 2016 replaces the FRL and CEP/SAS variables with the percentage of students who are directly certified in the October FTE count.

BTO:
2015-2016 State Charter School Performance Rankings

TABLE 3.1, Beating the Odds Determinations

School	CCRPI Single Score ⁹	Predicted Threshold FRL Model	Beating the Odds?	Predicted Threshold Dir. Cert. Model	Beating the Odds?
Atlanta Heights Charter School	57.5	56.7	Y	54.6	Y
Statesboro STEAM CCAT	64.3	78.1	N	78.6	N
Cherokee Charter Academy	74.8	80.0	N	78.9	N
Coweta Charter Academy	72.9	80.7	N	79.6	N
DuBois Integrity Academy	33.3	61.8	N	63.3	N
Foothills Education Charter High School	46.2	70.8	N	59.3	N
Fulton Leadership Charter Academy	61.2	64.7	N	69.3	N
Georgia Connections Academy	60.4	75.6	N	69.9	N
Georgia Cyber Academy	58.5	81.9	N	75.2	N
Georgia School for Innovation and the Classics	54.4	83.6	N	74.0	N
Graduation Achievement Charter HS (formerly Provost)	44.1	71.3	N	59.5	N
International Charter School of Atlanta	70.1	85.3	N	83.7	N
Ivy Preparatory Academy at Gwinnett	66.0	74.7	N	73.2	N
Ivy Prep Academy at Kirkwood for Girls	50.6	64.4	N	63.6	N
Mountain Education Charter High School*	55.0	57.4	N	64.3	N
Odyssey School	71.0	79.1	N	75.5	N
Pataula Charter Academy	72.4	75.0	N	71.8	Y
Scintilla Charter Academy	51.8	71.9	N	73.1	N
Utopian Academy for the Arts	57.9	61.0	N	65.0	N

Note: After producing the predicted CCRPI single score, BTO estimates a 95% confidence interval to determine whether the predicted CCRPI single score is statistically different from the actual CCRPI single score. If a school's actual CCRPI single score is greater than the upper boundary of the 95% confidence interval (Predicted Threshold) the school is designated as Beating the Odds.

* After the initial release of BTO results for the 2015-16 school year, GOSA identified an error in the calculations. Upon fixing the error and re-running the calculations, Mountain Education Charter High School was no longer designated as "Beating the Odds". However, GOSA and the GaDOE have decided to "hold harmless" the schools that were originally "Beating the Odds" but are no longer in that category. Thus, the school is still considered meeting SCSC academic standards for the 2015-16 school year. MEC's initial predicted threshold for the FRL model was 54.7. This is lower than the schools actual CCRPI single score of 55. For more information visit <http://gosa.georgia.gov/beating-odds-analysis>.

⁹ The BTO uses the CCRPI Single Score without Challenge Points

SECTION 4: SCHOOL PROFILES

ATLANTA HEIGHTS

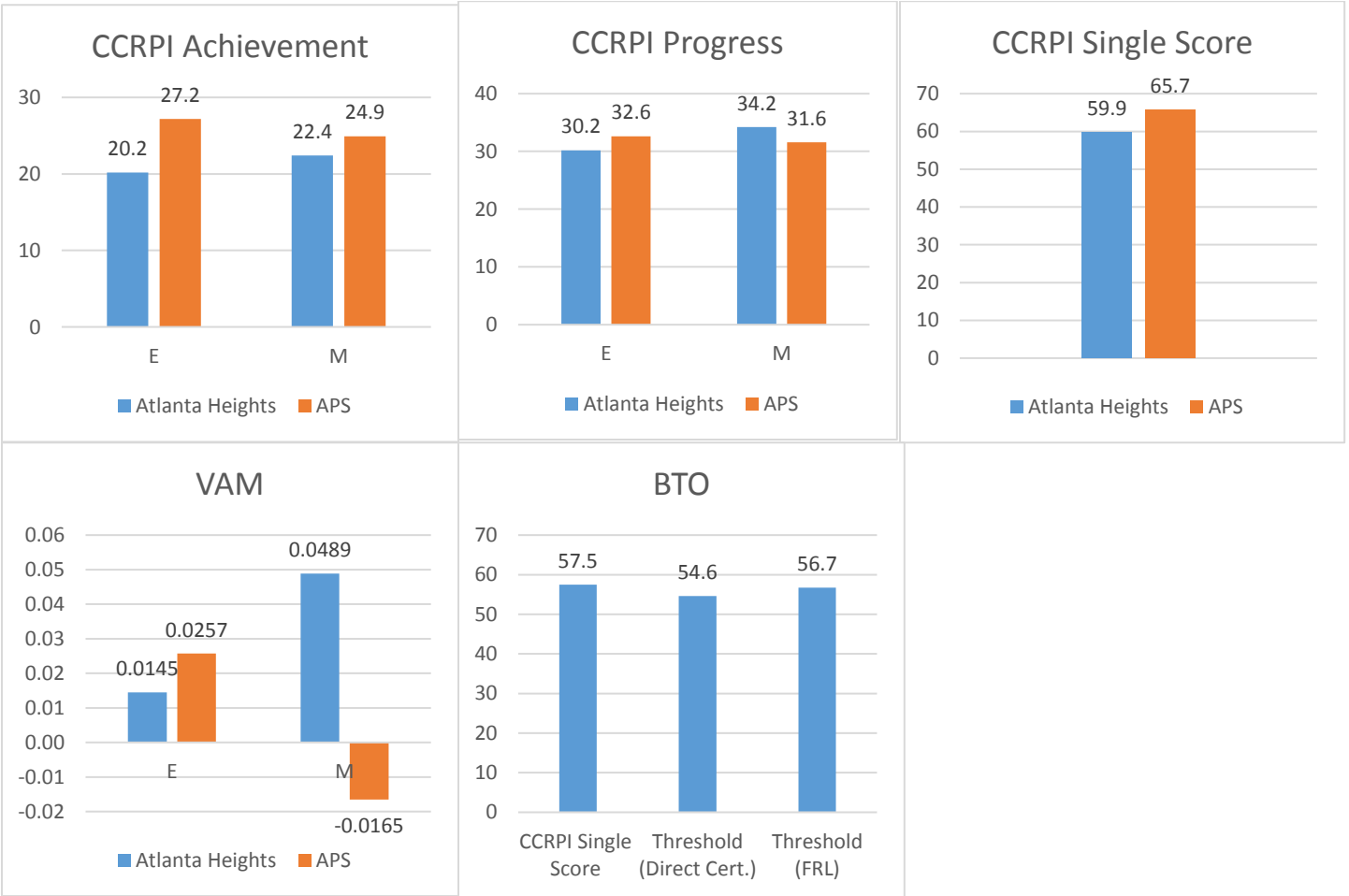
2015-2016 Academic Standing: Meeting Standards

Atlanta Heights is meeting SCSC academic standards by earning a Beating the Odds designation as calculated by GOSA and published by GADOE.

Performance on Comprehensive Performance Framework (CPF) Academic Standards

First Look Indicators			
Metric	Description	Met Standard?	Explanation
Indicator 1, Measure 1	Federal Performance Measures	N	Did Not Fulfill Requirements
Indicator 2, Measure 1	CCRPI Achievement	N	Did Not Outperform District
Indicator 2, Measure 2	CCRPI Progress*	N	Did Not Outperform District
Second Look Indicators			
Metric	Description	Met Standard?	Explanation
Part A	CCRPI Single Score	N	Did Not Outperform District
Part B	Value-Added Impact	N	Did Not Outperform District
Part C	Beating the Odds	Y	Fulfilled Requirements

*A school may satisfy academic requirements by earning a higher CCRPI Progress score in all grade bands or all grade bands in which the school did not earn a higher CCRPI Achievement score.



The elementary VAM score is not statistically different from the district score. The middle grade VAM score is statistically higher than the district score.

BTO uses the CCRPI Single Score without Challenge Points.

STATESBORO STEAM CCAT

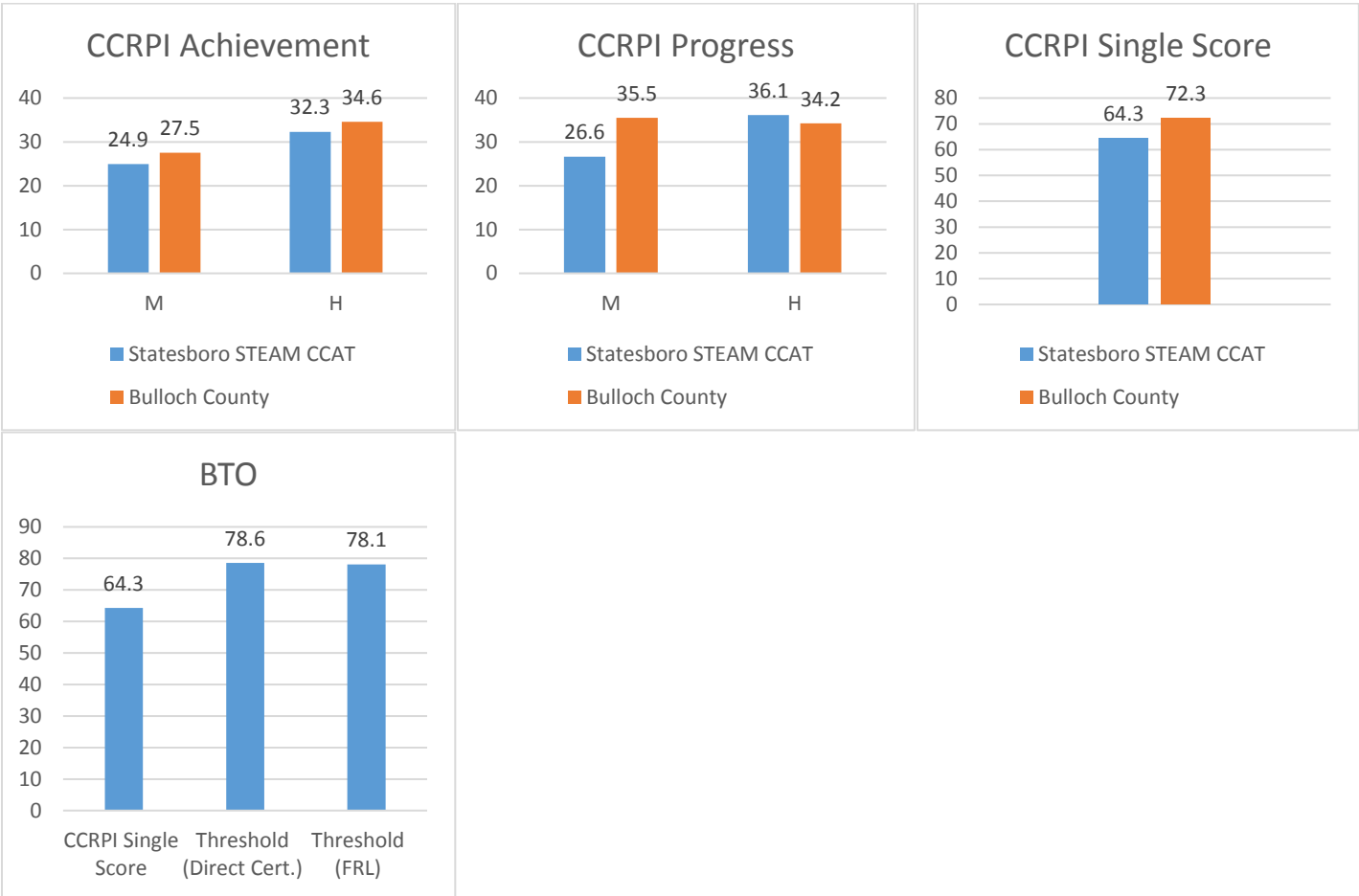
2015-2016 Academic Standing: Not Meeting Standards

Statesboro Steam CCAT is not meeting SCSC academic standards for the 2015-16 school year.

Performance on Comprehensive Performance Framework (CPF) Academic Standards

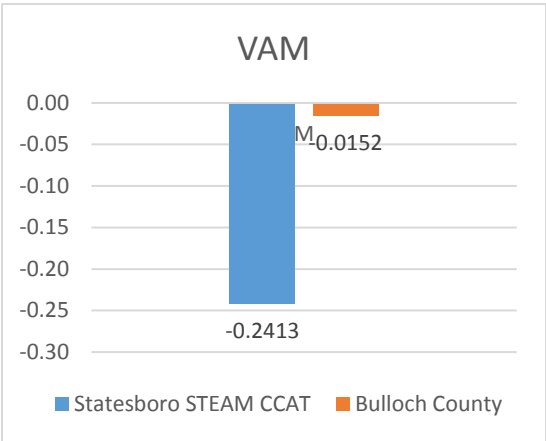
First Look Indicators			
Metric	Description	Met Standard?	Explanation
Indicator 1, Measure 1	Federal Performance Measures	N	Did Not Fulfill Requirements
Indicator 2, Measure 1	CCRPI Achievement	N	Did Not Outperform District
Indicator 2, Measure 2	CCRPI Progress*	N	Did Not Outperform District
Second Look Indicators			
Metric	Description	Met Standard?	Explanation
Part A	CCRPI Single Score	N	Did Not Outperform District
Part B	Value-Added Impact	N	Did Not Outperform District
Part C	Beating the Odds	N	Did Not Fulfill Requirements

*A school may satisfy academic requirements by earning a higher CCRPI Progress score in all grade bands or all grade bands in which the school did not earn a higher CCRPI Achievement score.



BTO uses the CCRPI Single Score without Challenge Points.

(Statesboro STEAM CCAT, continued)



The middle grade VAM score is statistically lower than the district score.

VAM-High School			
High School Course	Statesboro STEAM CCAT	Bulloch County	Statistically Different from District Average?
9th Grade Literature	-0.0062	-0.0326	Same
American Literature	0.0476	0.0250	Same
Analytic Geometry	-0.0106	0.0974	Same
Coordinate Algebra	-0.1786	-0.0236	Same

CHEROKEE CHARTER ACADEMY

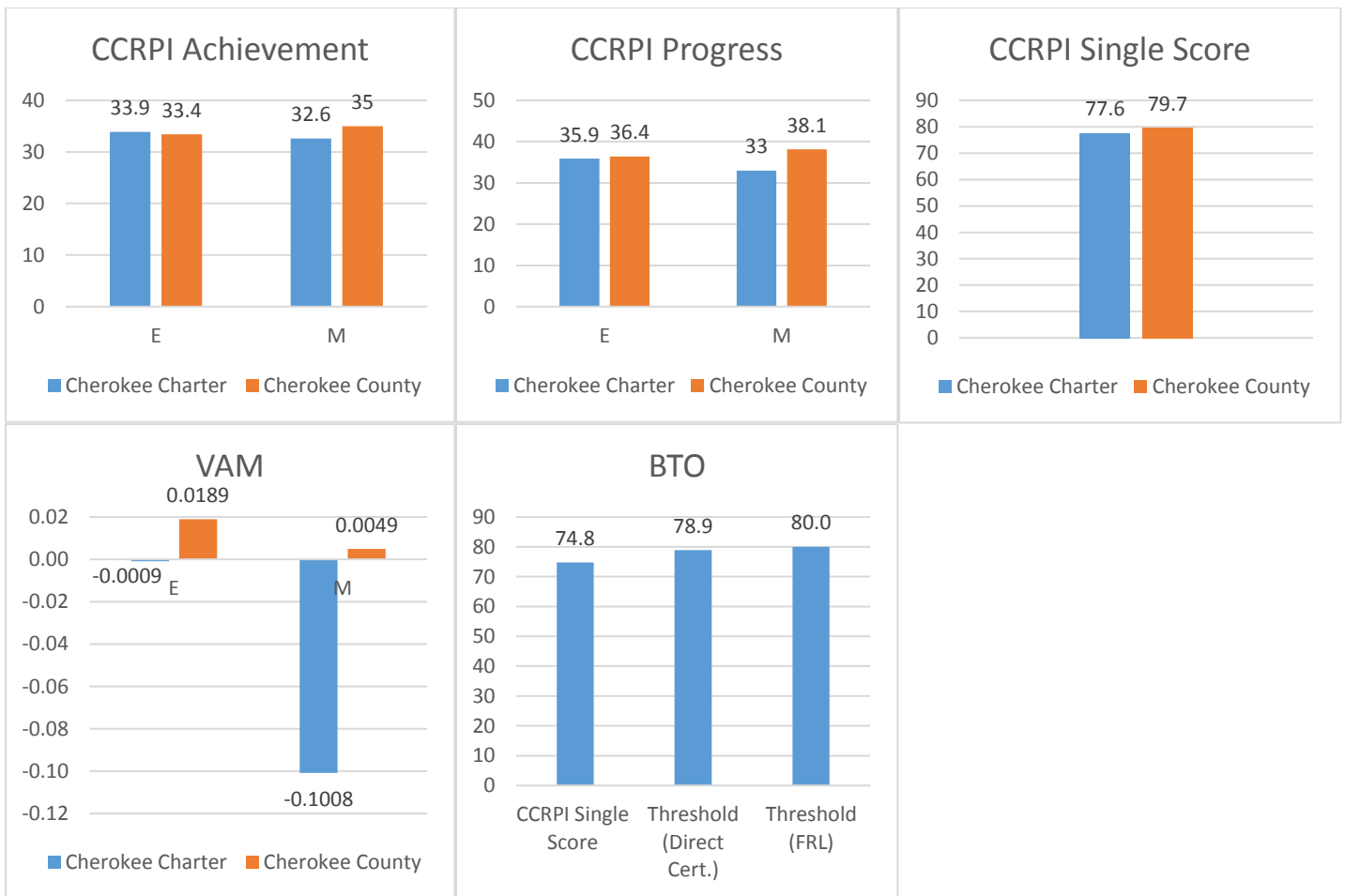
2015-2016 Academic Standing: Not Meeting Standards

Cherokee Charter Academy is not meeting SCSC academic standards for the 2015-16 school year.

Performance on Comprehensive Performance Framework (CPF) Academic Standards

First Look Indicators			
Metric	Description	Met Standard?	Explanation
Indicator 1, Measure 1	Federal Performance Measures	N	Did Not Fulfill Requirements
Indicator 2, Measure 1	CCRPI Achievement	N	Did Not Outperform District
Indicator 2, Measure 2	CCRPI Progress*	N	Did Not Outperform District
Second Look Indicators			
Metric	Description	Met Standard?	Explanation
Part A	CCRPI Single Score	N	Did Not Outperform District
Part B	Value-Added Impact	N	Did Not Outperform District
Part C	Beating the Odds	N	Did Not Fulfill Requirements

*A school may satisfy academic requirements by earning a higher CCRPI Progress score in all grade bands or all grade bands in which the school did not earn a higher CCRPI Achievement score.



The elementary VAM score is not statistically different from the district score. The middle grade VAM score is statistically lower than the district score.

BTO uses the CCRPI Single Score without Challenge Points.

COWETA CHARTER ACADEMY

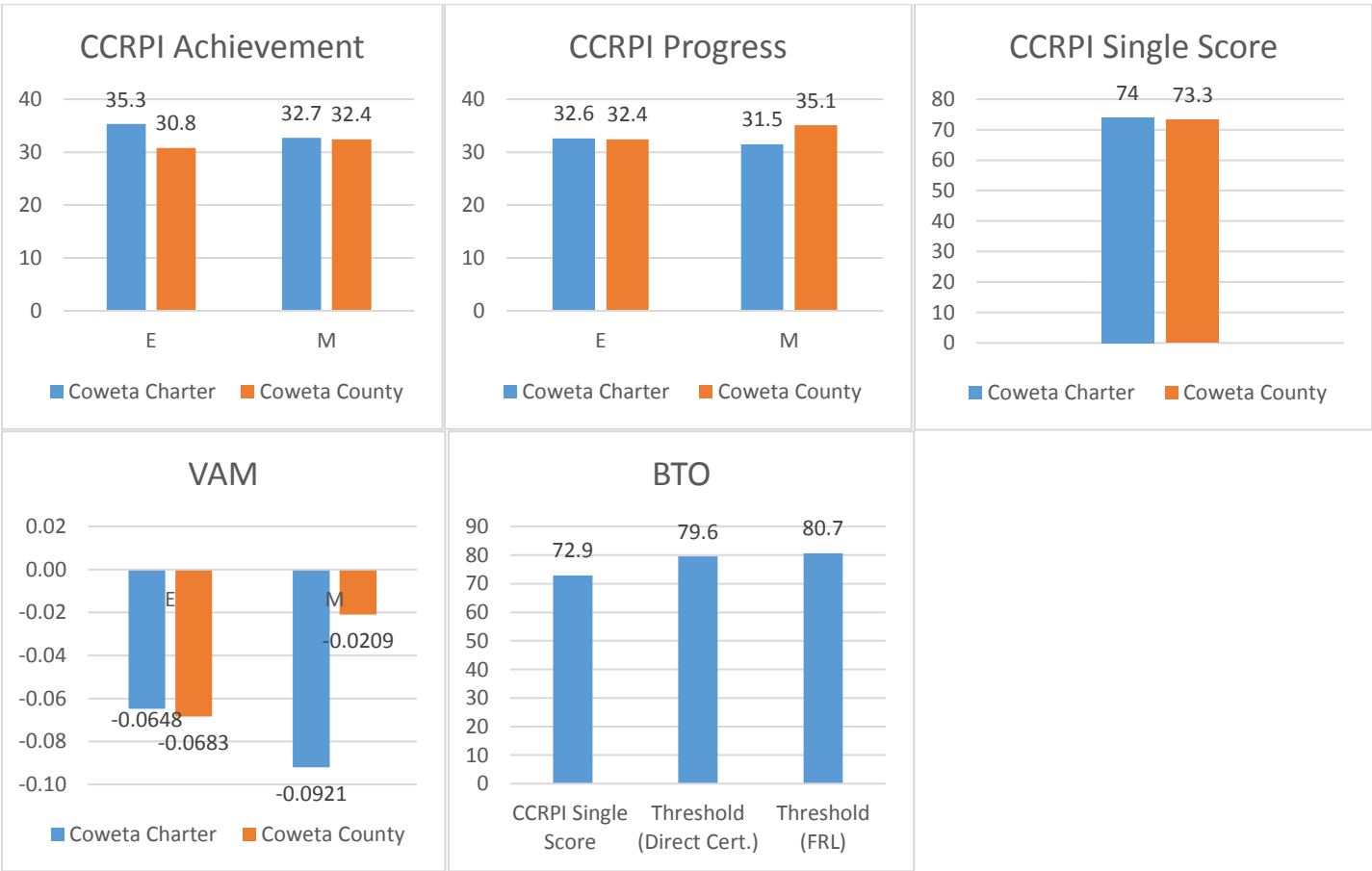
2015-2016 Academic Standing: Meeting Standards

Coweta Charter Academy is meeting SCSC academic standards by outperforming its comparison district on the CCRPI Single Score and CCRPI Achievement Score in all grade bands served.

Performance on Comprehensive Performance Framework (CPF) Academic Standards

First Look Indicators			
Metric	Description	Met Standard?	Explanation
Indicator 1, Measure 1	Federal Performance Measures	N	Did Not Fulfill Requirements
Indicator 2, Measure 1	CCRPI Achievement	Y	Did Outperform District
Indicator 2, Measure 2	CCRPI Progress*	N	Did Not Outperform District
Second Look Indicators			
Metric	Description	Met Standard?	Explanation
Part A	CCRPI Single Score	Y	Did Outperform District
Part B	Value-Added Impact	N	Did Not Outperform District
Part C	Beating the Odds	N	Did Not Fulfill Requirements

*A school may satisfy academic requirements by earning a higher CCRPI Progress score in all grade bands or all grade bands in which the school did not earn a higher CCRPI Achievement score.



The elementary VAM score is not statistically different from the district score. The middle grade VAM score is statistically higher than the district score.

BTO uses the CCRPI Single Score without Challenge Points.

DUBOIS INTEGRITY ACADEMY

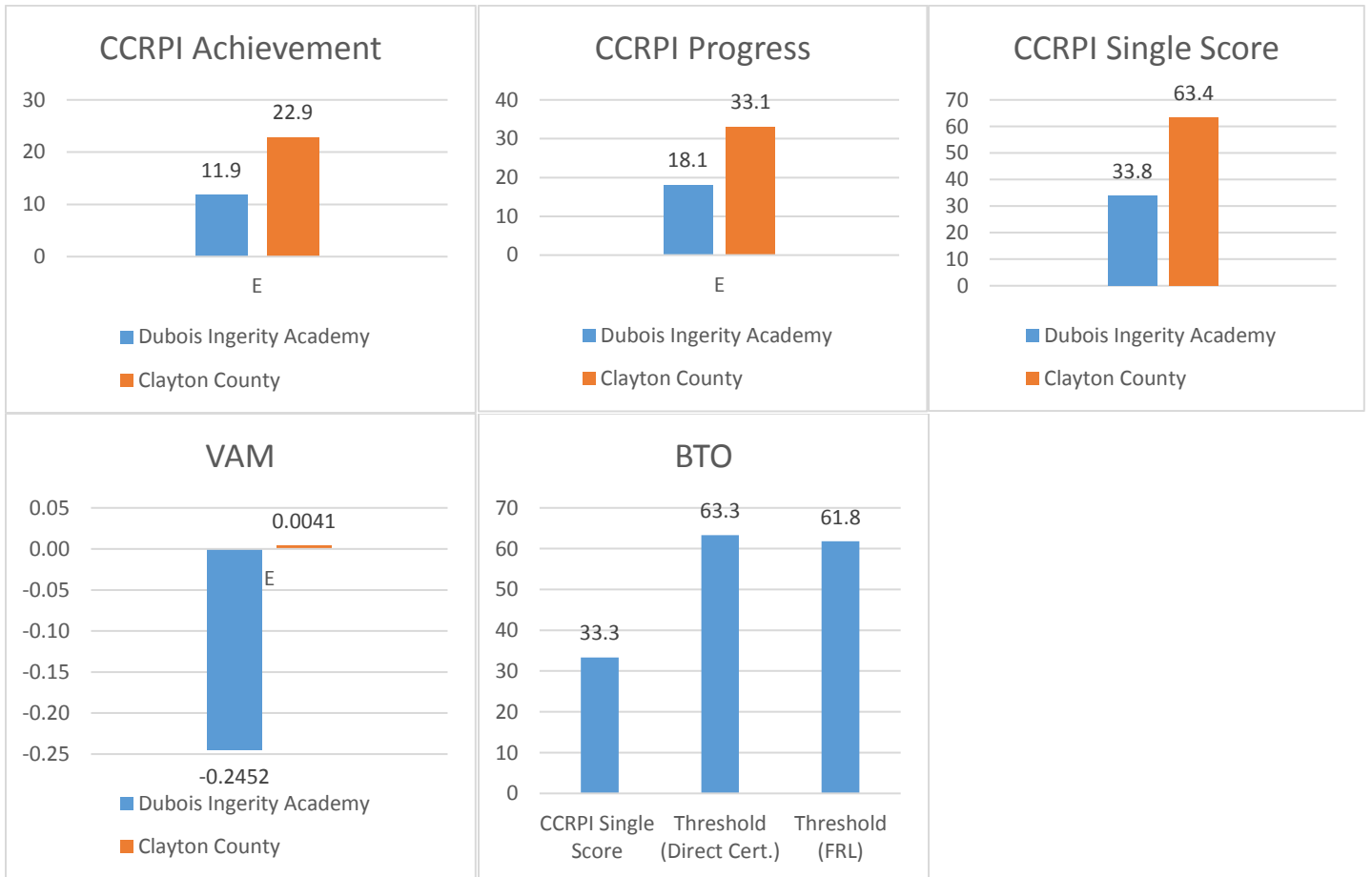
2015-2016 Academic Standing: Not Meeting Standards

DuBois Integrity Academy is not meeting SCSC academic standards for the 2015-16 school year.

Performance on Comprehensive Performance Framework (CPF) Academic Standards

First Look Indicators			
Metric	Description	Met Standard?	Explanation
Indicator 1, Measure 1	Federal Performance Measures	N	Did Not Fulfil Requirements
Indicator 2, Measure 1	CCRPI Achievement	N	Did Not Outperform District
Indicator 2, Measure 2	CCRPI Progress*	N	Did Not Outperform District
Second Look Indicators			
Metric	Description	Met Standard?	Explanation
Part A	CCRPI Single Score	N	Did Not Outperform District
Part B	Value-Added Impact	N	Did Not Outperform District
Part C	Beating the Odds	N	Did Not Fulfill Requirements

*A school may satisfy academic requirements by earning a higher CCRPI Progress score in all grade bands or all grade bands in which the school did not earn a higher CCRPI Achievement score.



The elementary VAM score is statistically lower than the district score.

BTO uses the CCRPI Single Score without Challenge Points.

FOOTHILLS EDUCATION CHARTER HIGH SCHOOL

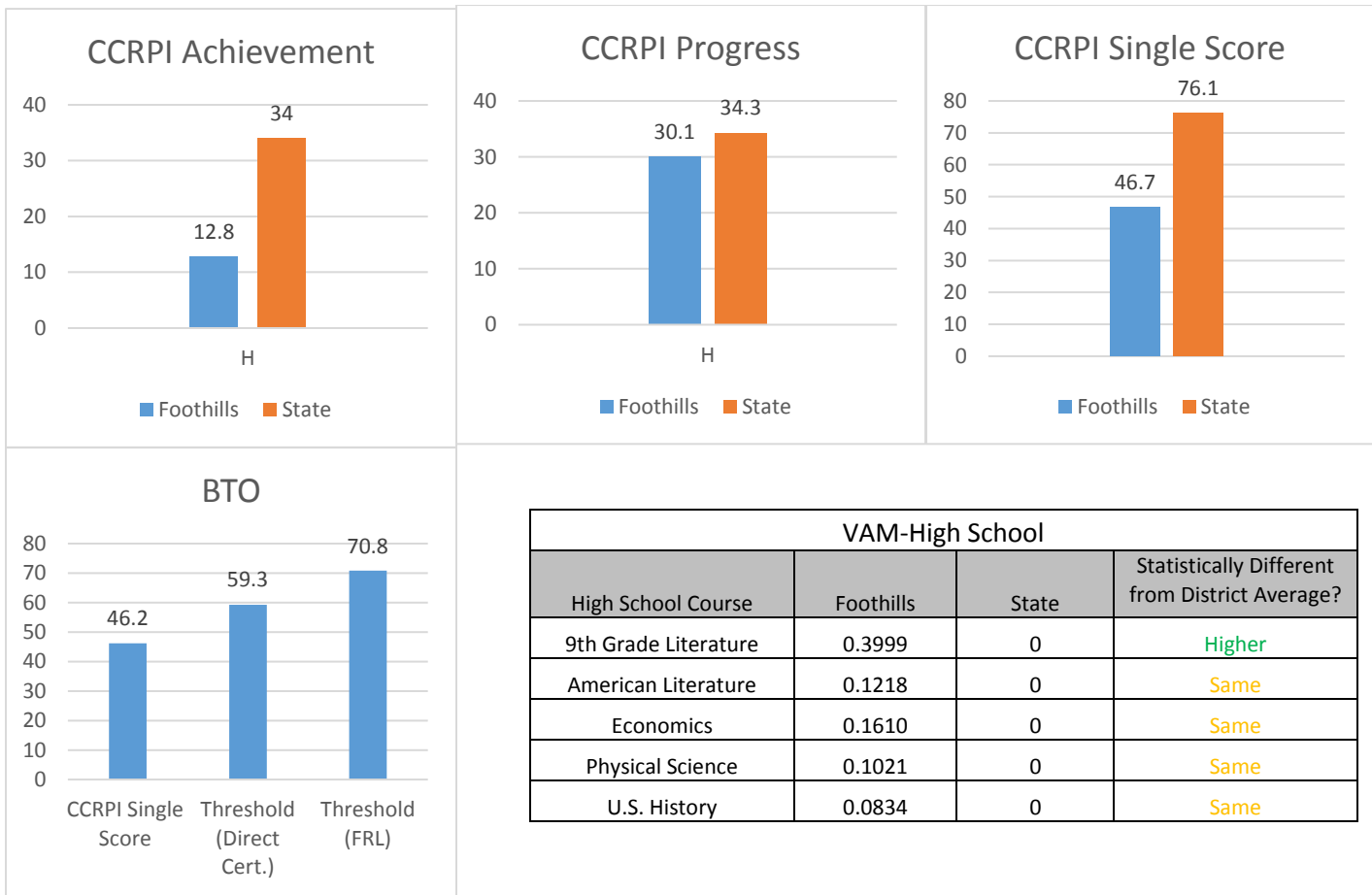
2015-2016 Academic Standing: Not Meeting Standards

Foothills is not meeting SCSC academic standards for the 2015-16 school year.

Performance on Comprehensive Performance Framework (CPF) Academic Standards

First Look Indicators			
Metric	Description	Met Standard?	Explanation
Indicator 1, Measure 1	Federal Performance Measures	N	Did Not Fulfill Requirements
Indicator 2, Measure 1	CCRPI Achievement	N	Did Not Outperform District
Indicator 2, Measure 2	CCRPI Progress*	N	Did Not Outperform District
Second Look Indicators			
Metric	Description	Met Standard?	Explanation
Part A	CCRPI Single Score	N	Did Not Outperform District
Part B	Value-Added Impact	N	Did Not Outperform District
Part C	Beating the Odds	N	Did Not Fulfill Requirements

*A school may satisfy academic requirements by earning a higher CCRPI Progress score in all grade bands or all grade bands in which the school did not earn a higher CCRPI Achievement score.



BTO uses the CCRPI Single Score without Challenge Points.

FULTON LEADERSHIP ACADEMY

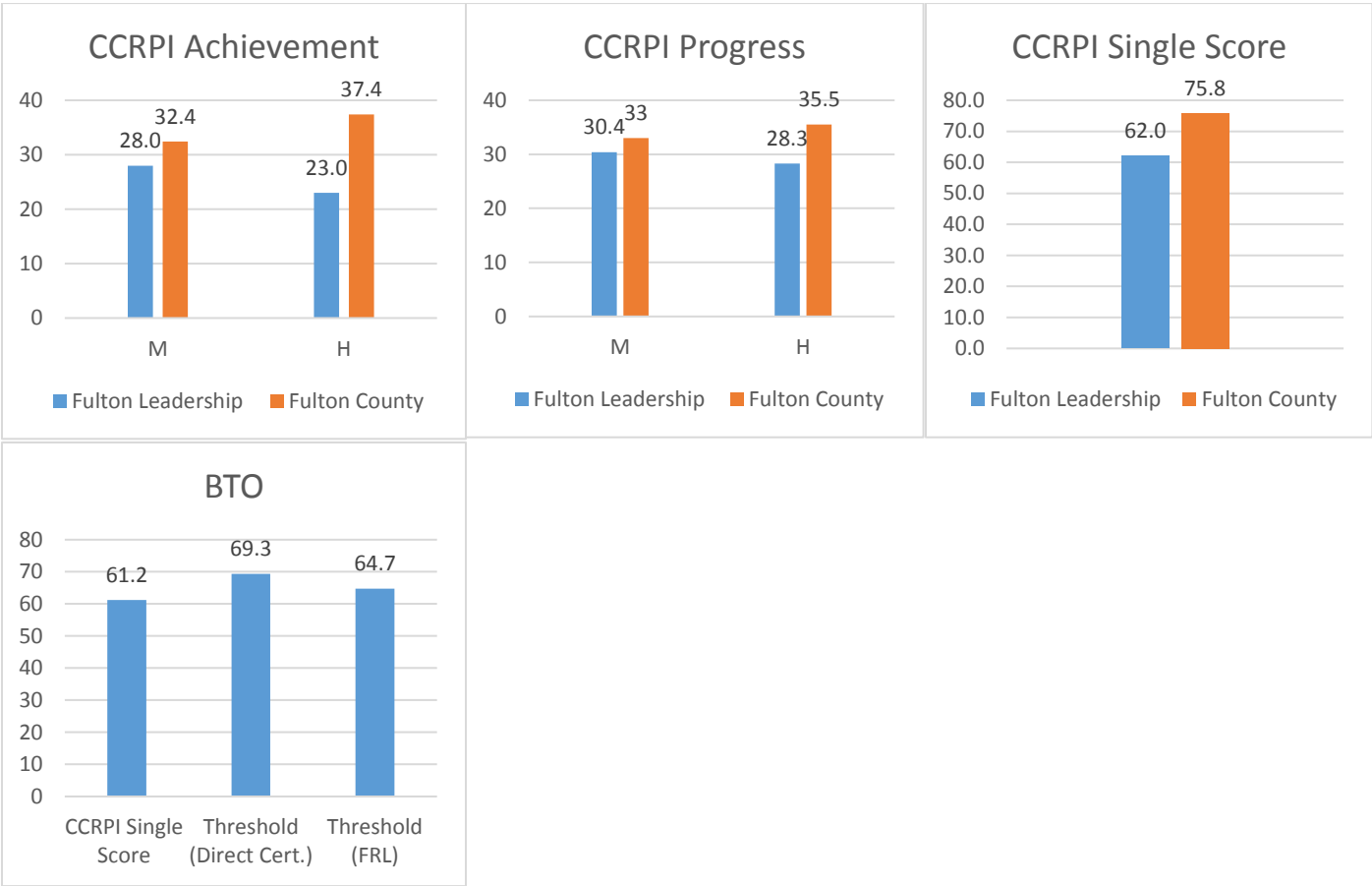
2015-2016 Academic Standing: Not Meeting Standards

Fulton Leadership Academy is not meeting SCSC academic standards for the 2015-16 school year.

Performance on Comprehensive Performance Framework (CPF) Academic Standards

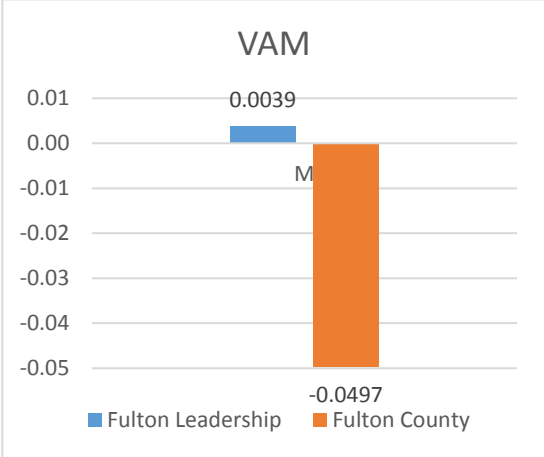
First Look Indicators			
Metric	Description	Met Standard?	Explanation
Indicator 1, Measure 1	Federal Performance Measures	N	Did Not Fulfill Requirements
Indicator 2, Measure 1	CCRPI Achievement	N	Did Not Outperform District
Indicator 2, Measure 2	CCRPI Progress*	N	Did Not Outperform District
Second Look Indicators			
Metric	Description	Met Standard?	Explanation
Part A	CCRPI Single Score	N	Did Not Outperform District
Part B	Value-Added Impact	N	Did Not Outperform District
Part C	Beating the Odds	N	Did Not Fulfill Requirements

*A school may satisfy academic requirements by earning a higher CCRPI Progress score in all grade bands or all grade bands in which the school did not earn a higher CCRPI Achievement score.



BTO uses the CCRPI Single Score without Challenge Points.

(Fulton Leadership Academy, Continued)



The middle grade VAM score is statistically higher than the district score.

VAM-High School			
High School Course	Fulton Leadership	Fulton County	Statistically Different from District Average?
9th Grade Literature	0.0208	0.0172	Same
American Literature	-0.0711	0.0090	Same
Analytic Geometry	0.0617	0.0617	Same
Algebra 1	0.1094	0.0367	Same
Biology	-0.1581	0.0195	Lower
U.S. History	-0.2693	-0.0410	Lower

GEORGIA CONNECTIONS ACADEMY

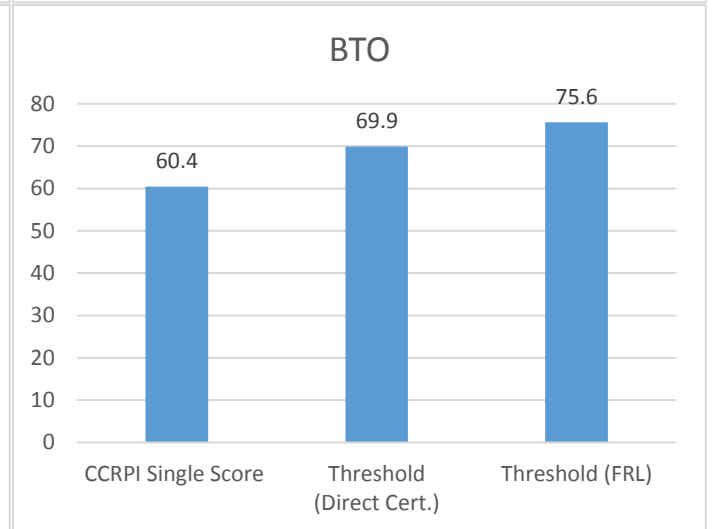
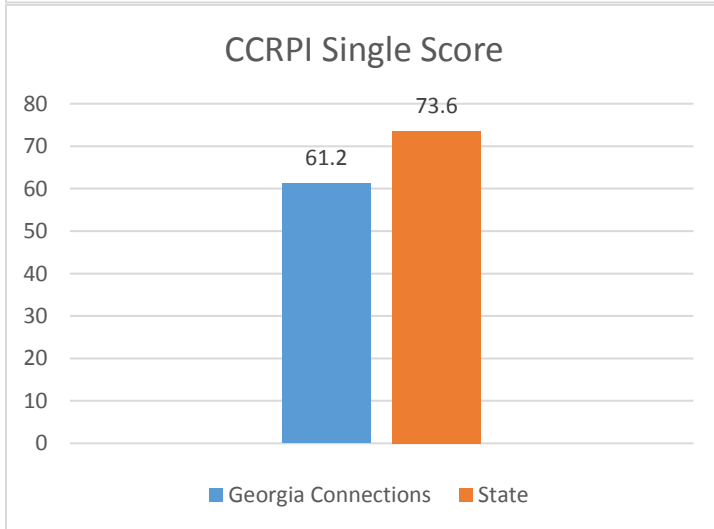
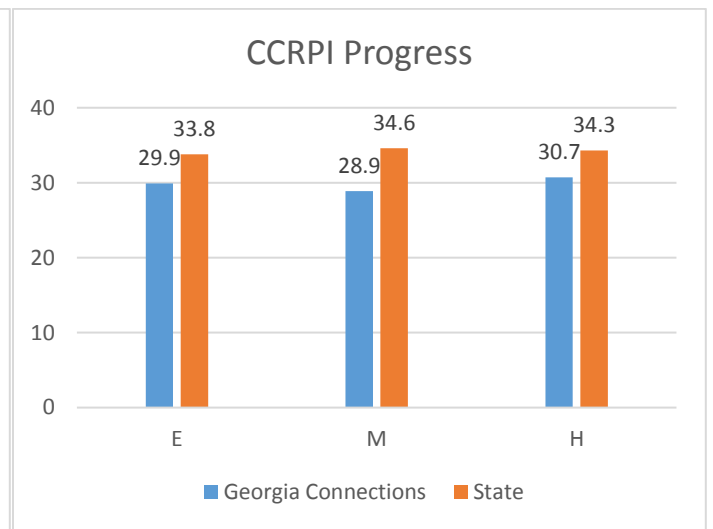
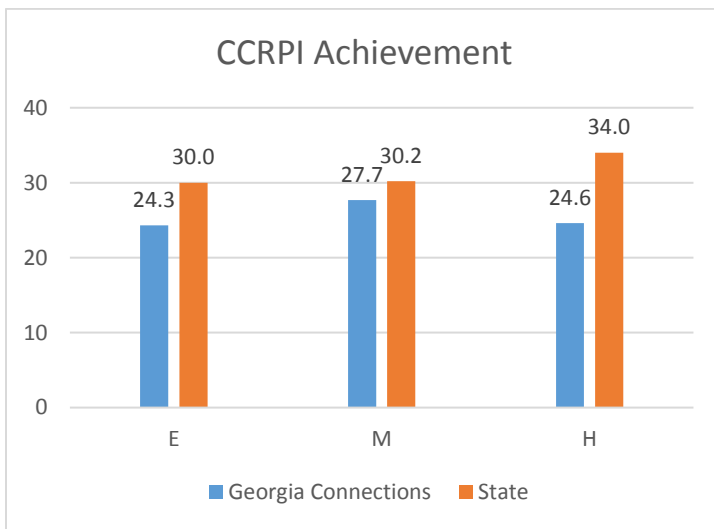
2015-2016 Academic Standing: Not Meeting Standards

Georgia Connections Academy is not meeting SCSC academic standards for the 2015-16 school year.

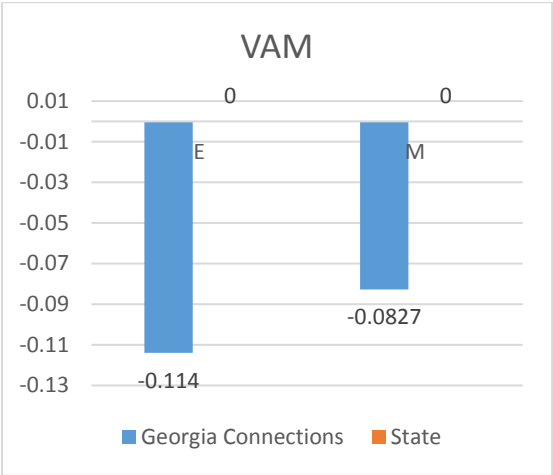
Performance on Comprehensive Performance Framework (CPF) Academic Standards

First Look Indicators			
Metric	Description	Met Standard?	Explanation
Indicator 1, Measure 1	Federal Performance Measures	N	Did Not Fulfill Requirements
Indicator 2, Measure 1	CCRPI Achievement	N	Did Not Outperform District
Indicator 2, Measure 2	CCRPI Progress*	N	Did Not Outperform District
Second Look Indicators			
Metric	Description	Met Standard?	Explanation
Part A	CCRPI Single Score	N	Did Not Outperform District
Part B	Value-Added Impact	N	Did Not Outperform District
Part C	Beating the Odds	N	Did Not Fulfill Requirements

*A school may satisfy academic requirements by earning a higher *CCRPI Progress* score in all grade bands or all grade bands in which the school did not earn a higher *CCRPI Achievement* score.



BTO uses the CCRPI Single Score without Challenge Points.



VAM-High School			
High School Course	Connections	State	Statistically Different from District Average?
9th Grade Literature	0.2357	0	Higher
American Literature	0.1316	0	Higher
Algebra 1	-0.0593	0	Lower
Biology	-0.0064	0	Same
Economics	-0.4659	0	Lower
Geometry	-0.0346	0	Same
Physical Science	-0.1483	0	Lower
U.S. History	-0.2694	0	Lower

The elementary and middle grades VAM scores are statistically lower than the state average.

GEORGIA CYBER ACADEMY

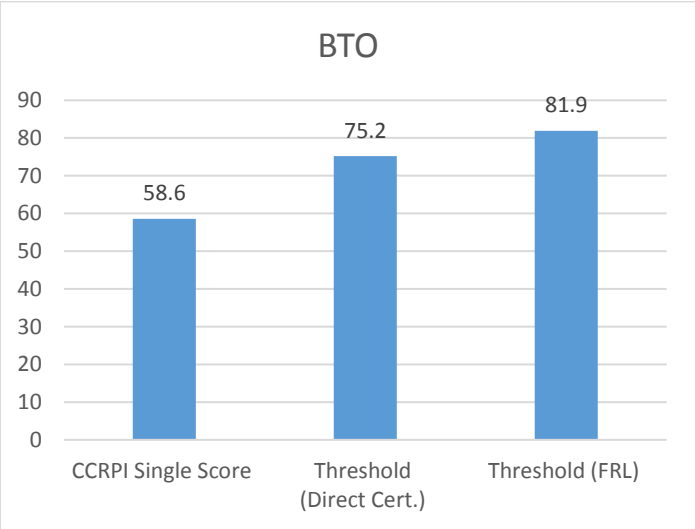
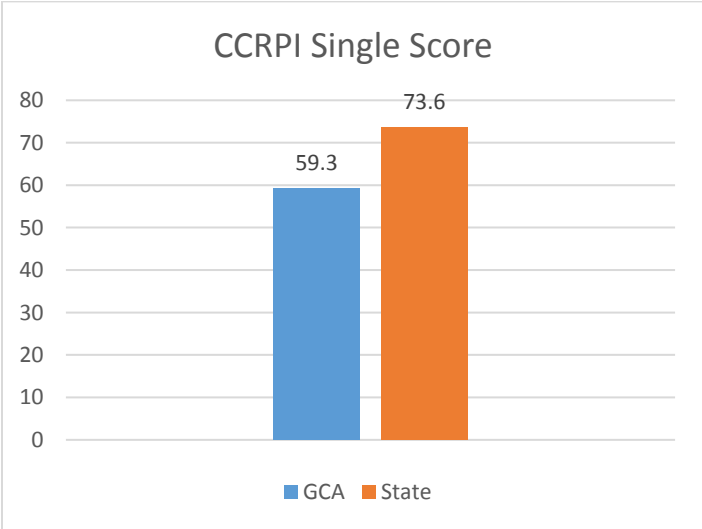
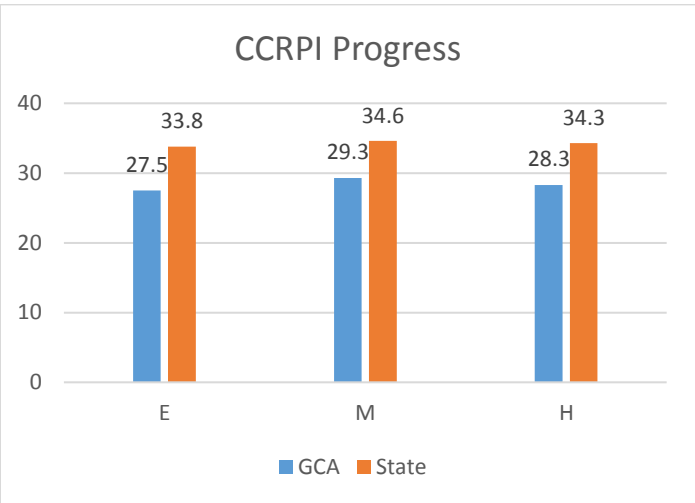
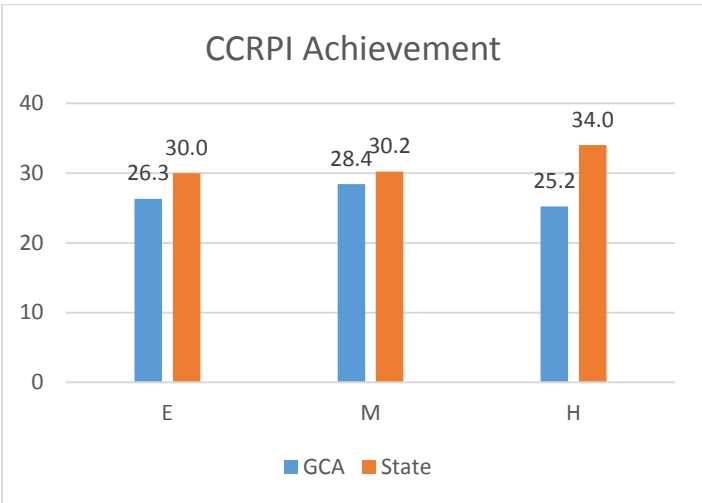
2015-2016 Academic Standing: Not Meeting Standards

Georgia Cyber Academy is not meeting SCSC academic standards for the 2015-16 school year.

Performance on Comprehensive Performance Framework (CPF) Academic Standards

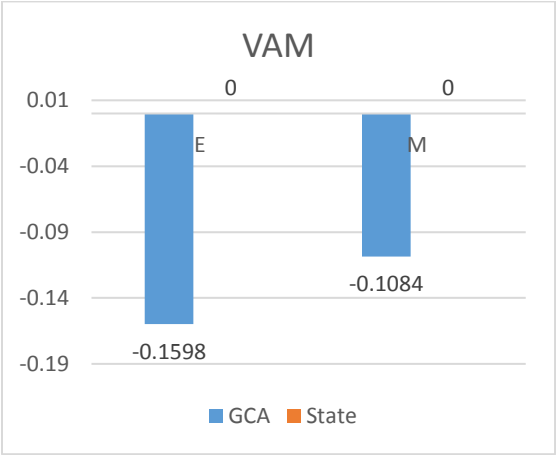
First Look Indicators			
Metric	Description	Met Standard?	Explanation
Indicator 1, Measure 1	Federal Performance Measures	N	Did Not Fulfill Requirements
Indicator 2, Measure 1	CCRPI Achievement	N	Did Not Outperform District
Indicator 2, Measure 2	CCRPI Progress*	N	Did Not Outperform District
Second Look Indicators			
Metric	Description	Met Standard?	Explanation
Part A	CCRPI Single Score	N	Did Not Outperform District
Part B	Value-Added Impact	N	Did Not Outperform District
Part C	Beating the Odds	N	Did Not Fulfill Requirements

*A school may satisfy academic requirements by earning a higher CCRPI Progress score in all grade bands or all grade bands in which the school did not earn a higher CCRPI Achievement score.



BTO uses the CCRPI Single Score without Challenge Points.

(Georgia Cyber Academy Continued)



The elementary and middle grades VAM scores are statistically lower than the state average.

VAM-High School			
High School Course	GCA	State	Statistically Different from District Average?
9th Grade Literature	0.0619	0	Higher
American Literature	0.1949	0	Higher
Analytic Geometry	-0.1428	0	Lower
Algebra 1	-0.1354	0	Lower
Biology	-0.2194	0	Lower
Economics	-0.2020	0	Lower
Physical Science	-0.2391	0	Lower
U.S. History	-0.3372	0	Lower

GEORGIA SCHOOL FOR INNOVATION AND THE CLASSICS

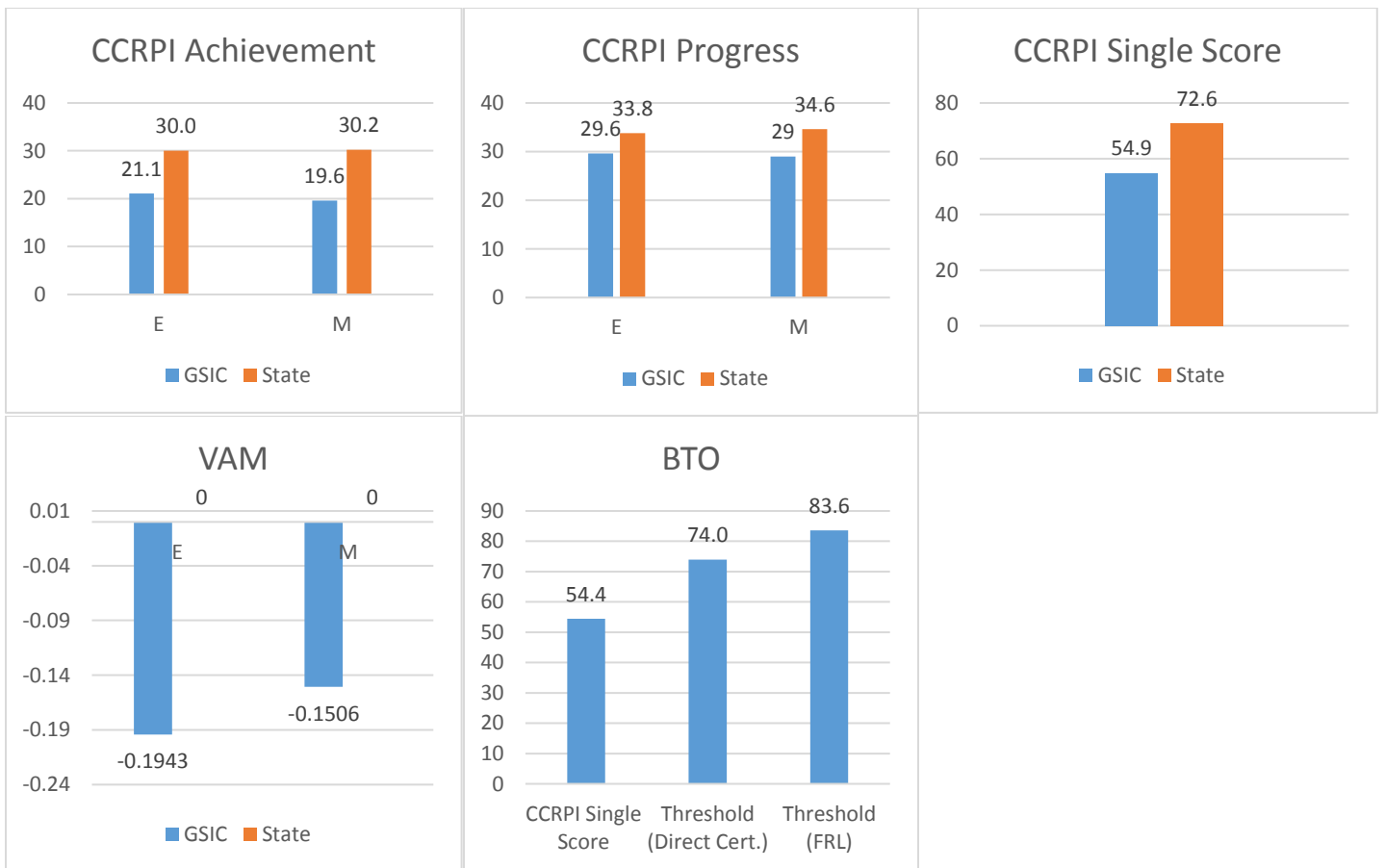
2015-2016 Academic Standing: Not Meeting Standards

Georgia School for Innovation and the Classics is not meeting SCSC academic standards for the 2015-16 school year.

Performance on Comprehensive Performance Framework (CPF) Academic Standards

First Look Indicators			
Metric	Description	Met Standard?	Explanation
Indicator 1, Measure 1	Federal Performance Measures	N	Did Not Fulfill Requirements
Indicator 2, Measure 1	CCRPI Achievement	N	Did Not Outperform District
Indicator 2, Measure 2	CCRPI Progress*	N	Did Not Outperform District
Second Look Indicators			
Metric	Description	Met Standard?	Explanation
Part A	CCRPI Single Score	N	Did Not Outperform District
Part B	Value-Added Impact	N	Did Not Outperform District
Part C	Beating the Odds	N	Did Not Fulfill Requirements

*A school may satisfy academic requirements by earning a higher CCRPI Progress score in all grade bands or all grade bands in which the school did not earn a higher CCRPI Achievement score.



The elementary and middle grades VAM scores are statistically lower than the state average.

BTO uses the CCRPI Single Score without Challenge Points.

GRADUATION ACHIEVEMENT CHARTER HIGH SCHOOL

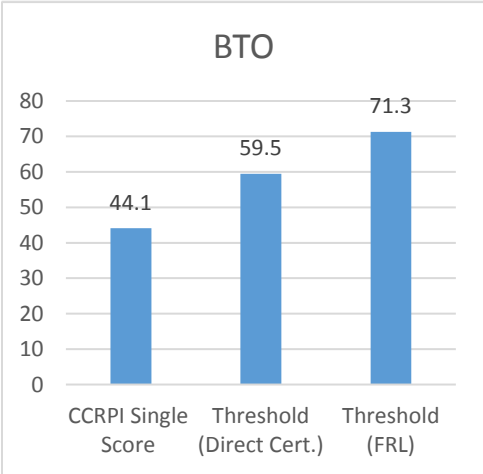
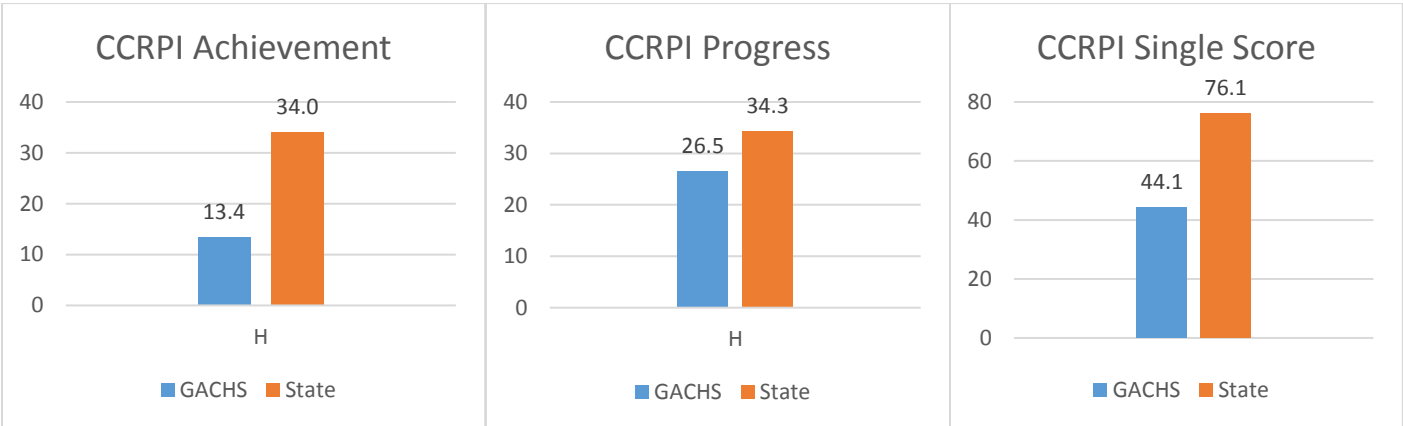
2015-2016 Academic Standing: Not Meeting Standards

Graduation Achievement Charter High School is not meeting SCSC academic standards for the 2015-16 school year.

Performance on Comprehensive Performance Framework (CPF) Academic Standards

First Look Indicators			
Metric	Description	Met Standard?	Explanation
Indicator 1, Measure 1	Federal Performance Measures	N	Did Not Fulfill Requirements
Indicator 2, Measure 1	CCRPI Achievement	N	Did Not Outperform District
Indicator 2, Measure 2	CCRPI Progress*	N	Did Not Outperform District
Second Look Indicators			
Metric	Description	Met Standard?	Explanation
Part A	CCRPI Single Score	N	Did Not Outperform District
Part B	Value-Added Impact	N	Did Not Outperform District
Part C	Beating the Odds	N	Did Not Fulfill Requirements

*A school may satisfy academic requirements by earning a higher CCRPI Progress score in all grade bands or all grade bands in which the school did not earn a higher CCRPI Achievement score.



VAM-High School			
High School Course	GACHS	State	Statistically Different from District Average?
9th Grade Literature	0.0974	0	Same
American Literature	0.0280	0	Same
Analytic Geometry	-0.1475	0	Same
Biology	-0.0459	0	Same
Coordinate Algebra	-0.0509	0	Same
Economics	-0.3216	0	Lower
Physical Science	-0.1834	0	Lower
U.S. History	-0.2978	0	Lower

BTO uses the CCRPI Single Score without Challenge Points.

INTERNATIONAL CHARTER SCHOOL OF ATLANTA

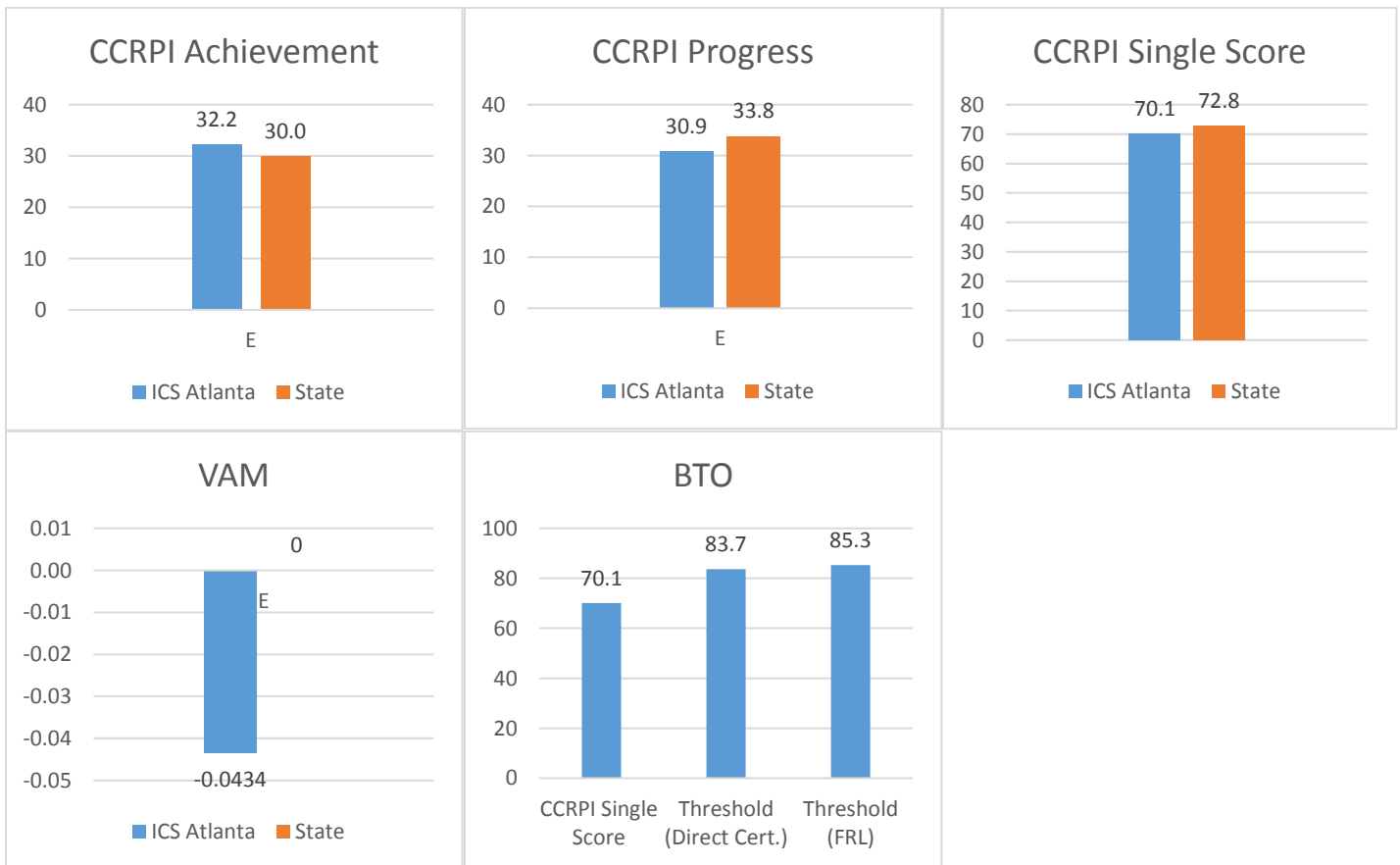
2015-2016 Academic Standing: Meeting Standards

International Charter School of Atlanta is meeting SCSC academic standards by outperforming its comparison district on CCRPI Achievement in all grade bands served.

Performance on Comprehensive Performance Framework (CPF) Academic Standards

First Look Indicators			
Metric	Description	Met Standard?	Explanation
Indicator 1, Measure 1	Federal Performance Measures	N	Did Not Fulfill Requirements
Indicator 2, Measure 1	CCRPI Achievement	Y	Did Outperform District
Indicator 2, Measure 2	CCRPI Progress*	N	Did Not Outperform District
Second Look Indicators			
Metric	Description	Met Standard?	Explanation
Part A	CCRPI Single Score	N	Did Not Outperform District
Part B	Value-Added Impact	N	Did Not Outperform District
Part C	Beating the Odds	N	Did Not Fulfill Requirements

*A school may satisfy academic requirements by earning a higher CCRPI Progress score in all grade bands or all grade bands in which the school did not earn a higher CCRPI Achievement score.



The elementary VAM score is not statistically different than the district

BTO uses the CCRPI Single Score without Challenge Points.

IVY PREP ACADEMY AT KIRKWOOD FOR GIRLS

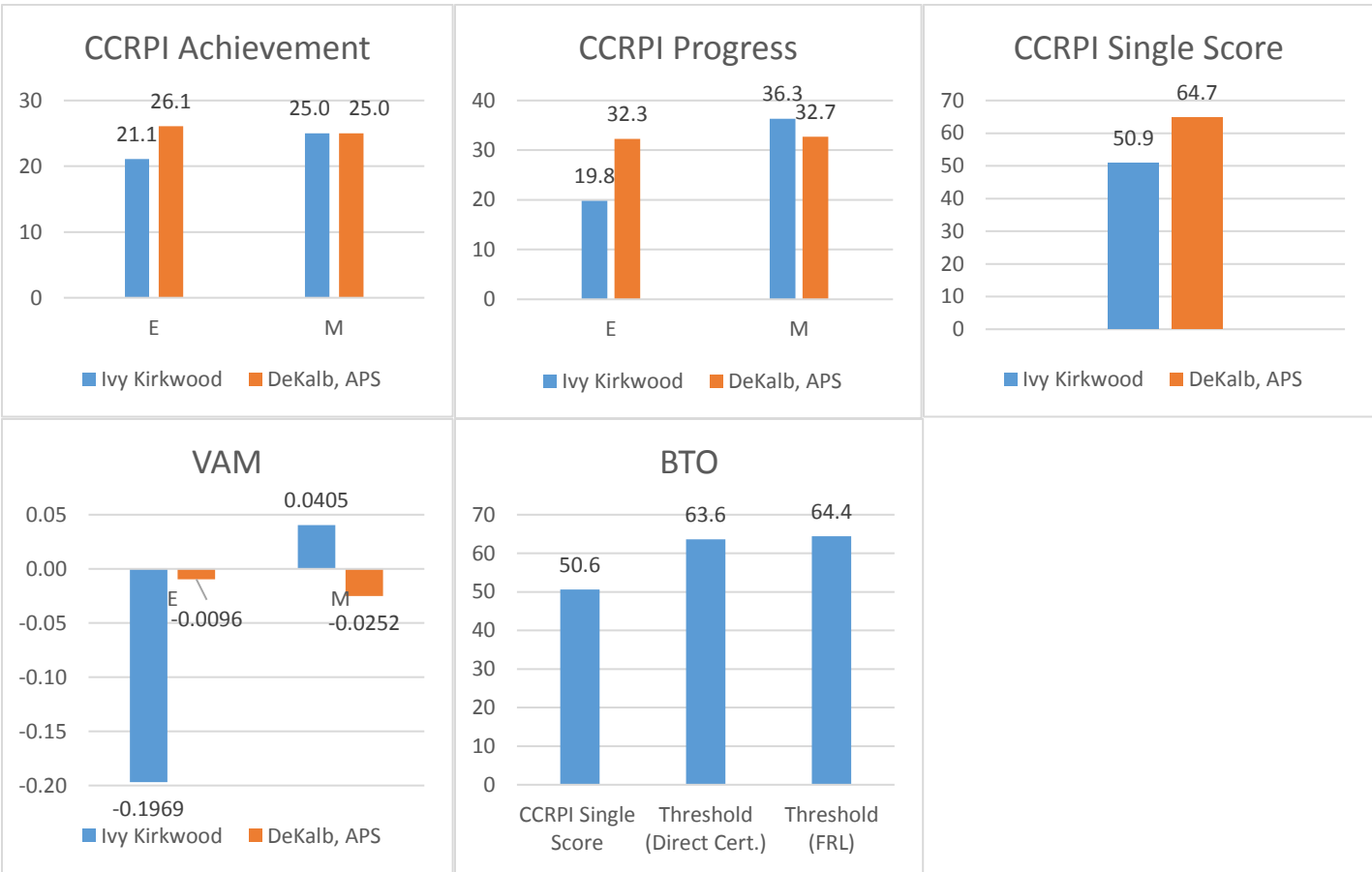
2015-2016 Academic Standing: Not Meeting Standards

Ivy Prep Academy at Kirkwood for Girls is not meeting SCSC academic standards for the 2015-16 school year.

Performance on Comprehensive Performance Framework (CPF) Academic Standards

First Look Indicators			
Metric	Description	Met Standard?	Explanation
Indicator 1, Measure 1	Federal Performance Measures	N	Did Not Fulfill Requirements
Indicator 2, Measure 1	CCRPI Achievement	N	Did Not Outperform District
Indicator 2, Measure 2	CCRPI Progress*	N	Did Not Outperform District
Second Look Indicators			
Metric	Description	Met Standard?	Explanation
Part A	CCRPI Single Score	N	Did Not Outperform District
Part B	Value-Added Impact	N	Did Not Outperform District
Part C	Beating the Odds	N	Did Not Fulfill Requirements

*A school may satisfy academic requirements by earning a higher CCRPI Progress score in all grade bands or all grade bands in which the school did not earn a higher CCRPI Achievement score.



The elementary VAM is statistically lower than the district score. The middle grades VAM score is not statistically different than the district.

BTO uses the CCRPI Single Score without Challenge Points.

IVY PREPARATORY ACADEMY AT GWINNETT

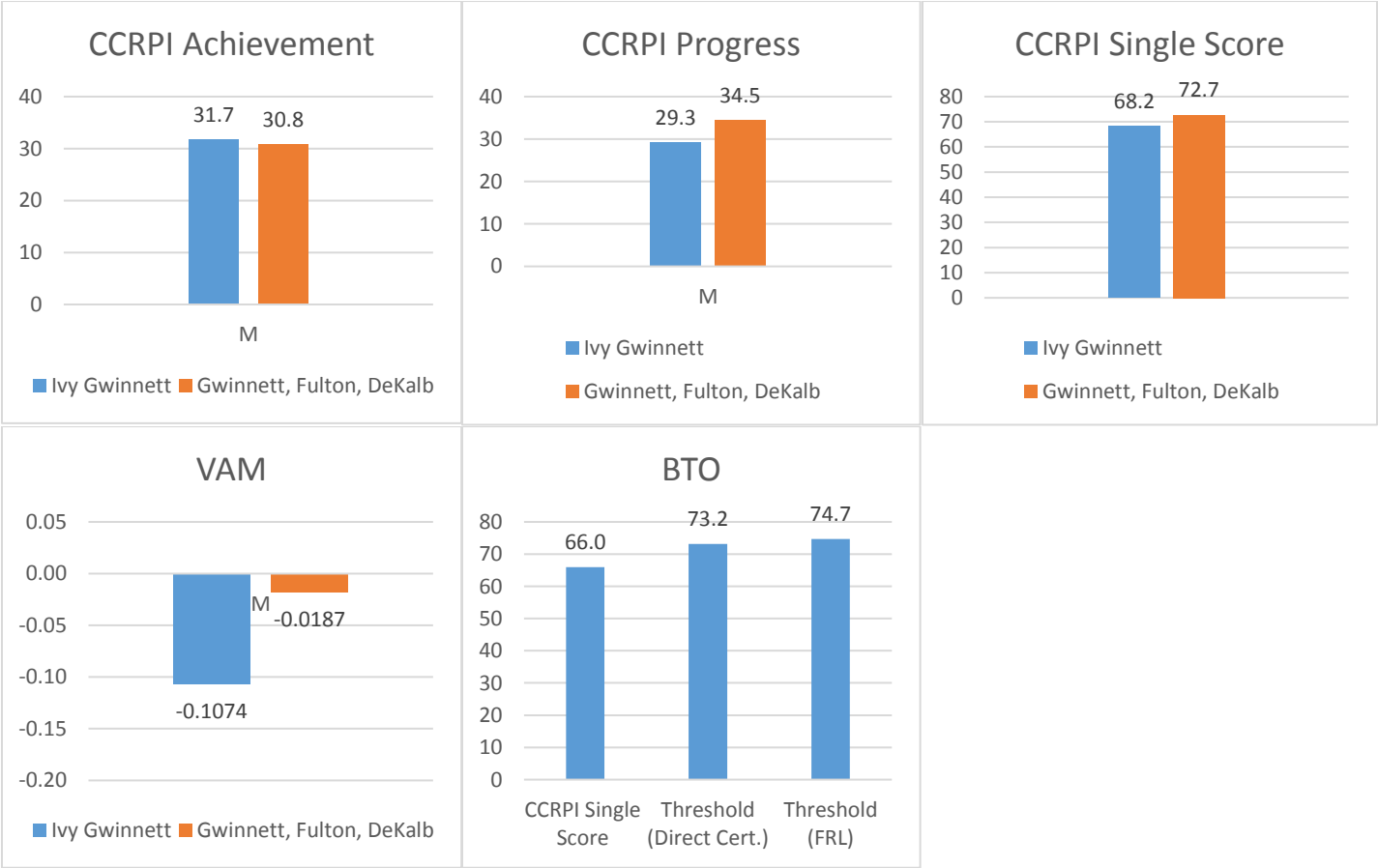
2015-2016 Academic Standing: Meeting Standards

Ivy Prep Academy at Gwinnett is meeting SCSC academic standards by outperforming its comparison district on CCRPI Achievement in all grade bands served.

Performance on Comprehensive Performance Framework (CPF) Academic Standards

First Look Indicators			
Metric	Description	Met Standard?	Explanation
Indicator 1, Measure 1	Federal Performance Measures	N	Did Not Fulfill Requirements
Indicator 2, Measure 1	CCRPI Achievement	Y	Did Outperform District
Indicator 2, Measure 2	CCRPI Progress*	N	Did Not Outperform District
Second Look Indicators			
Metric	Description	Met Standard?	Explanation
Part A	CCRPI Single Score	N	Did Not Outperform District
Part B	Value-Added Impact	N	Did Not Outperform District
Part C	Beating the Odds	N	Did Not Fulfill Requirements

*A school may satisfy academic requirements by earning a higher CCRPI Progress score in all grade bands or all grade bands in which the school did not earn a higher CCRPI Achievement score.



The middle VAM is statistically lower than the district score. BTO uses the CCRPI Single Score without Challenge Points.

MOUNTAIN EDUCATION CHARTER HIGH SCHOOL

2015-2016 Academic Standing: Meeting Standards

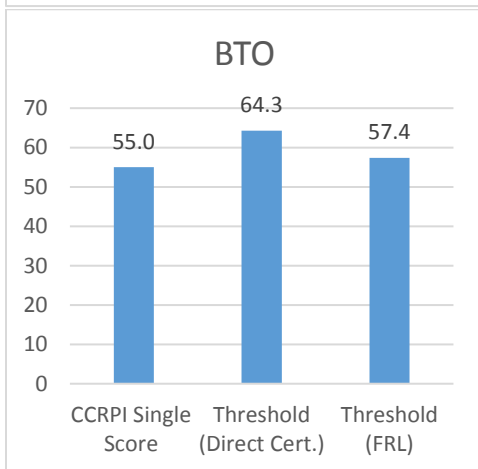
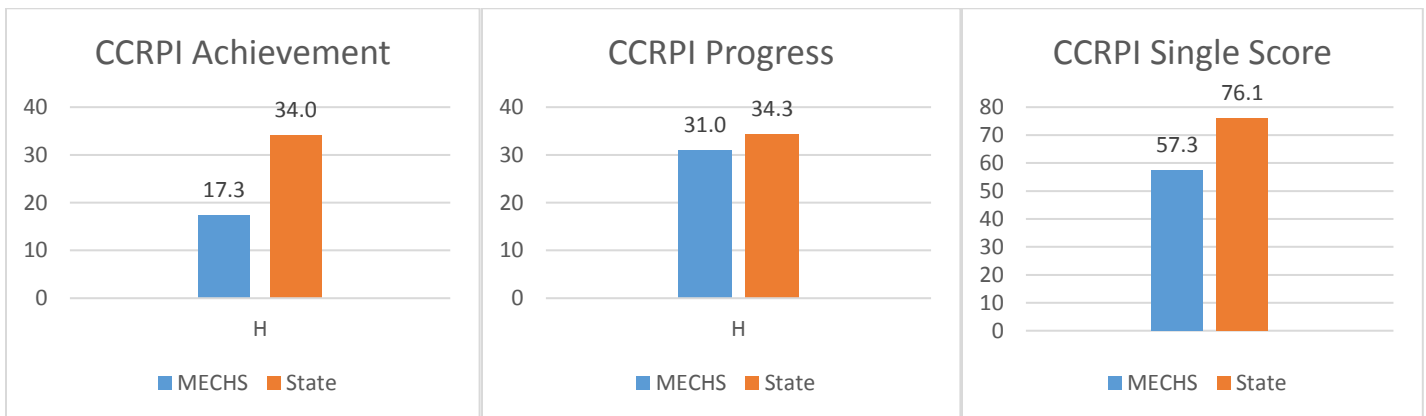
Mountain Education Charter High School is meeting SCSC academic standards by earning a Beating the Odds designation as calculated by GOSA and published by GADOE.

Performance on Comprehensive Performance Framework (CPF) Academic Standards

First Look Indicators			
Metric	Description	Met Standard?	Explanation
Indicator 1, Measure 1	Federal Performance Measures	N	Did Not Fulfill Requirements
Indicator 2, Measure 1	CCRPI Achievement	N	Did Not Outperform District
Indicator 2, Measure 2	CCRPI Progress*	N	Did Not Outperform District
Second Look Indicators			
Metric	Description	Met Standard?	Explanation
Part A	CCRPI Single Score	N	Did Not Outperform District
Part B	Value-Added Impact	N	Did Not Outperform District
Part C	Beating the Odds	Y**	Did Fulfill Requirements

*A school may satisfy academic requirements by earning a higher CCRPI Progress score in all grade bands or all grade bands in which the school did not earn a higher CCRPI Achievement score.

** After the initial release of BTO results for the 2015-16 school year, GOSA identified an error in the calculations. Upon fixing the error and re-running the calculations, Mountain Education Charter High School was no longer designated as “Beating the Odds”. However, GOSA and the GaDOE decided to “hold harmless” the schools that were originally “Beating the Odds” but are no longer in that category. Thus, the school is still considered meeting SCSC academic standards for the 2015-16 school year. MEC’s initial predicted threshold for the FRL model was 54.7. This is lower than the schools actual CCRPI single score of 55. For more information [click here](#).



BTO uses the CCRPI Single Score without Challenge Points.

VAM-High School			
High School Course	MECHS	State	Statistically Different from District Average?
9th Grade Literature	0.1000	0	Same
American Literature	0.0275	0	Same
Analytic Geometry	0.1492	0	Higher
Biology	-0.0578	0	Same
Coordinate Algebra	0.0797	0	Same
Economics	0.0717	0	Same
Physical Science	-0.0102	0	Same
U.S. History	-0.0266	0	Same

ODYSSEY SCHOOL

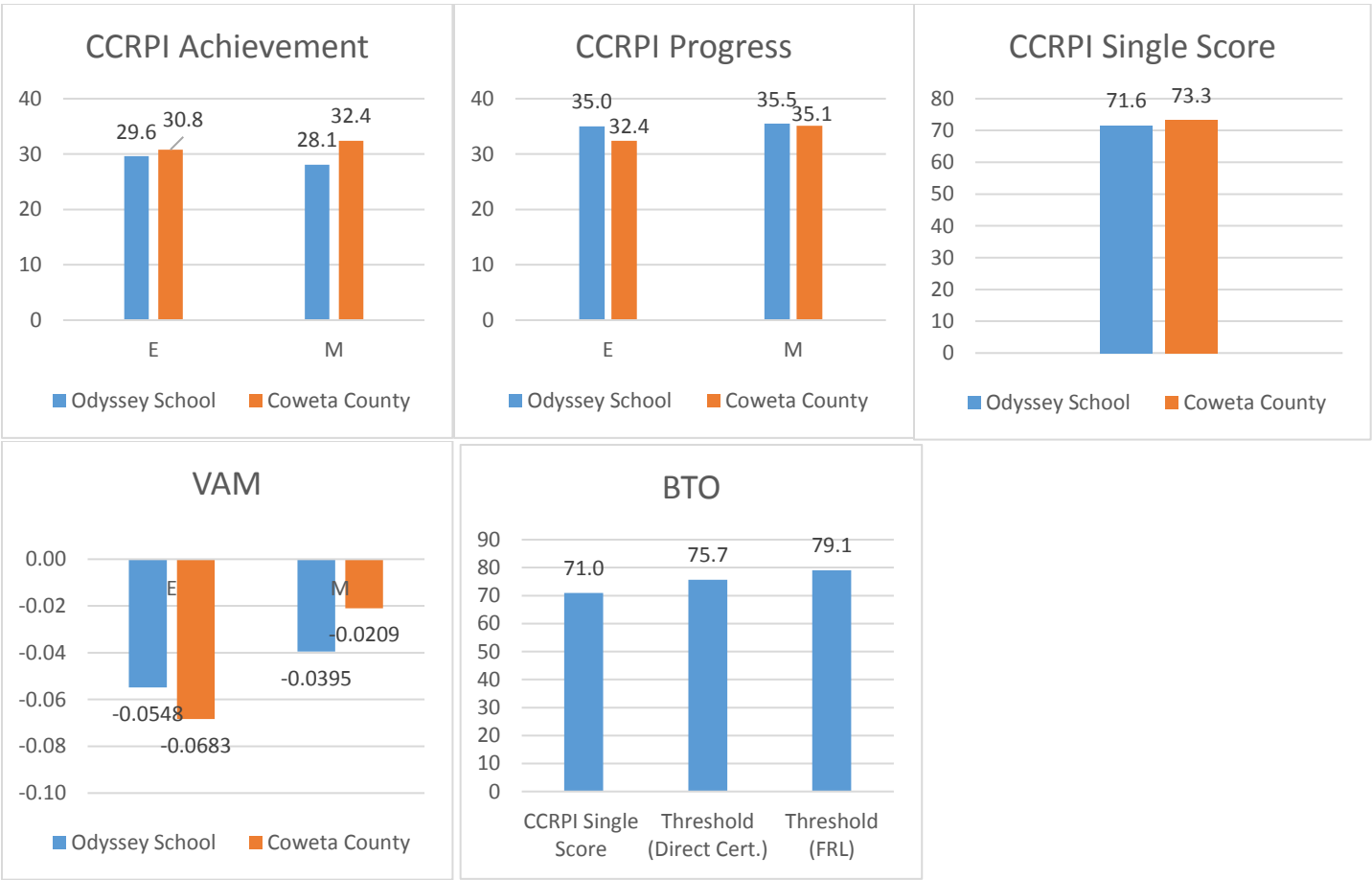
2015-2016 Academic Standing: Meeting Standards

Odyssey School is meeting SCSC academic standards by outperforming its comparison district(s) on the CCRPI Progress score in all grade bands served.

Performance on Comprehensive Performance Framework (CPF) Academic Standards

First Look Indicators			
Metric	Description	Met Standard?	Explanation
Indicator 1, Measure 1	Federal Performance Measures	N	Did Not Fulfill Requirements
Indicator 2, Measure 1	CCRPI Achievement	N	Did Not Outperform District
Indicator 2, Measure 2	CCRPI Progress*	Y	Did Not Outperform District
Second Look Indicators			
Metric	Description	Met Standard?	Explanation
Part A	CCRPI Single Score	N	Did Not Outperform District
Part B	Value-Added Impact	N	Did Not Outperform District
Part C	Beating the Odds	N	Did Not Fulfill Requirements

*A school may satisfy academic requirements by earning a higher CCRPI Progress score in all grade bands or all grade bands in which the school did not earn a higher CCRPI Achievement score.



The elementary and middle VAM scores are not statistically different than the district score.

BTO uses the CCRPI Single Score without Challenge Points.

PATAULA CHARTER ACADEMY

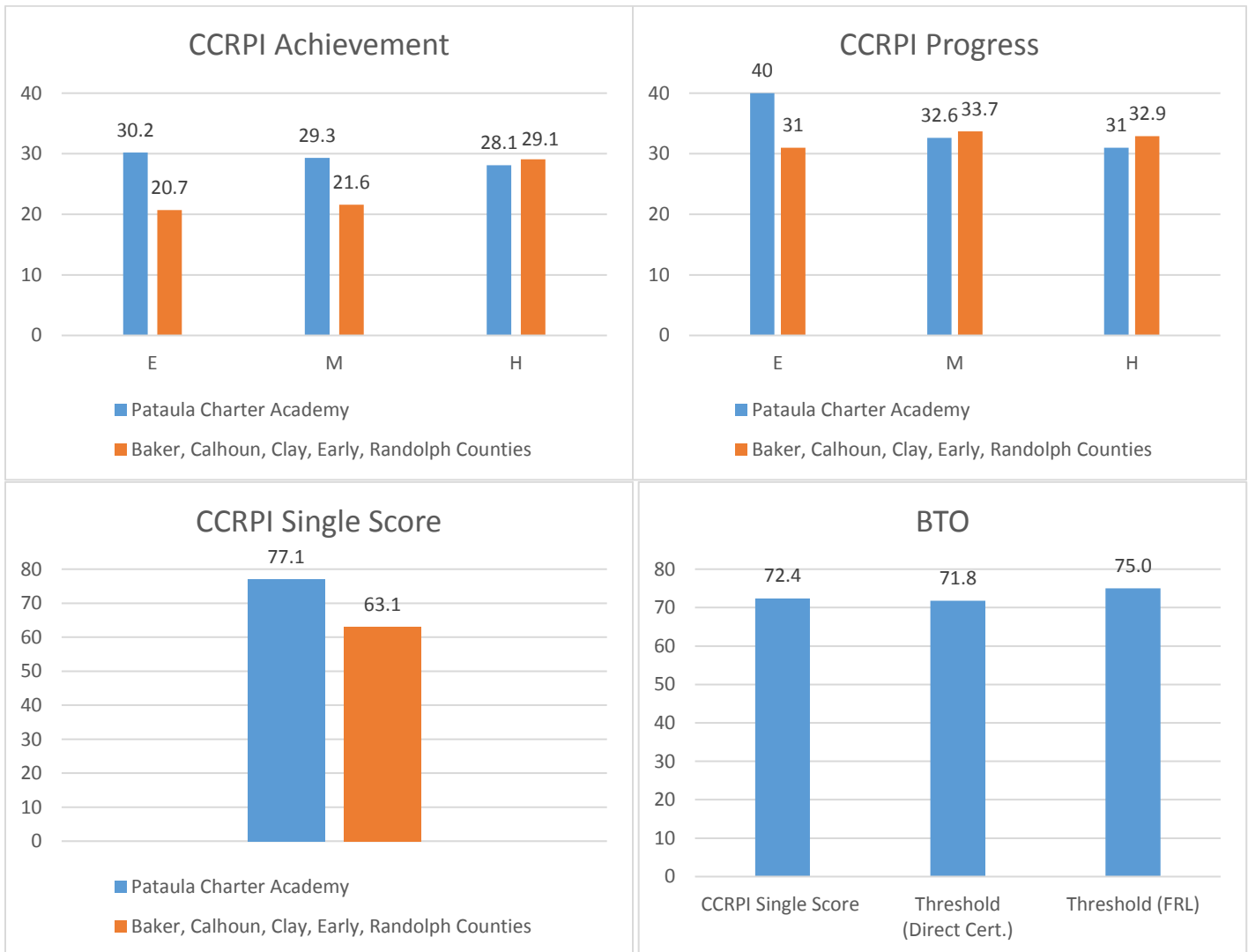
2015-2016 Academic Standing: Meeting Standards

Pataula Charter Academy is meeting SCSC academic standards by outperforming its comparison district(s) on the CCRPI Single Score and earning a Beating the Odds designation as calculated by GOSA and published by GADOE.

Performance on Comprehensive Performance Framework (CPF) Academic Standards

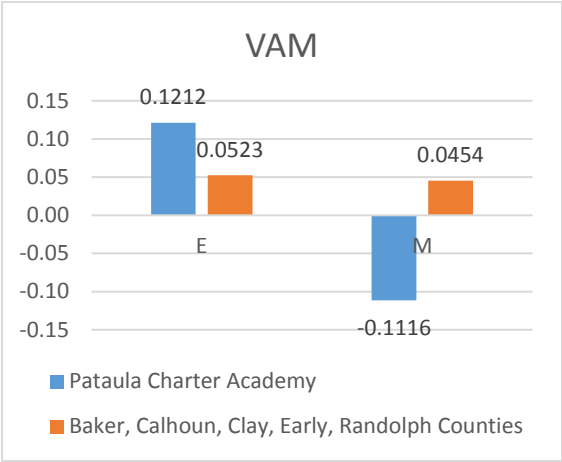
First Look Indicators			
Metric	Description	Met Standard?	Explanation
Indicator 1, Measure 1	Federal Performance Measures	N	Did Not Fulfill Requirements
Indicator 2, Measure 1	CCRPI Achievement	N	Did Not Outperform District
Indicator 2, Measure 2	CCRPI Progress*	N	Did Not Outperform District
Second Look Indicators			
Metric	Description	Met Standard?	Explanation
Part A	CCRPI Single Score	Y	Did Outperform District
Part B	Value-Added Impact	N	Did Not Outperform District
Part C	Beating the Odds	Y	Did Fulfill Requirements

*A school may satisfy academic requirements by earning a higher CCRPI Progress score in all grade bands or all grade bands in which the school did not earn a higher CCRPI Achievement score.



BTO uses the CCRPI Single Score without Challenge Points.

(Pataula Charter, Continued)



The elementary VAM score is not statistically different from the district score. The middle grades VAM is lower than the district score.

VAM-High School			
High School Course	Pataula	5 County Average*	Statistically Different from District Average?
9th Grade Literature	0.0643	0.1397	Same
American Literature	-0.0515	0.0875	Same
Analytic Geometry	-0.2179	0.1928	Lower
Algebra 1	-0.2323	0.0947	Lower
Biology	0.1234	0.0373	Same
Physical Science	0.1176	0.0472	Same
U.S. History	-0.3478	0.0359	Lower

*Counites include: Baker, Calhoun, Clay, Early, and Randolph

SCINTILLA CHARTER ACADEMY

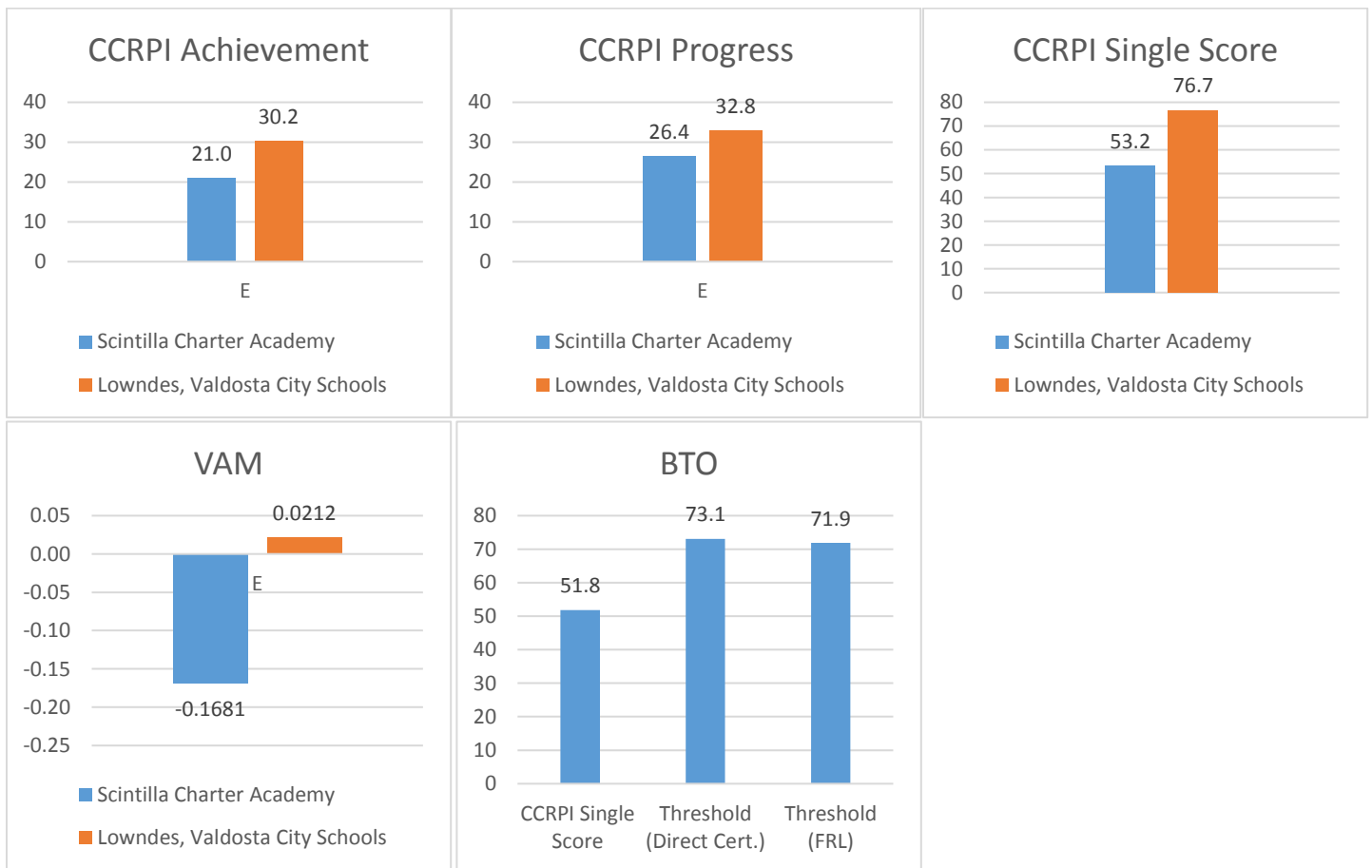
2015-2016 Academic Standing: Not Meeting Standards

Scintilla Charter Academy is not meeting SCSC academic standards for the 2015-16 school year.

Performance on Comprehensive Performance Framework (CPF) Academic Standards

First Look Indicators			
Metric	Description	Met Standard?	Explanation
Indicator 1, Measure 1	Federal Performance Measures	N	Did Not Fulfill Requirements
Indicator 2, Measure 1	CCRPI Achievement	N	Did Not Outperform District
Indicator 2, Measure 2	CCRPI Progress*	N	Did Not Outperform District
Second Look Indicators			
Metric	Description	Met Standard?	Explanation
Part A	CCRPI Single Score	N	Did Not Outperform District
Part B	Value-Added Impact	N	Did Not Outperform District
Part C	Beating the Odds	N	Did Not Fulfill Requirements

*A school may satisfy academic requirements by earning a higher CCRPI Progress score in all grade bands or all grade bands in which the school did not earn a higher CCRPI Achievement score.



The elementary VAM score is statistically lower than the district score.

BTO uses the CCRPI Single Score without Challenge Points.

UTOPIAN CHARTER ACADEMY

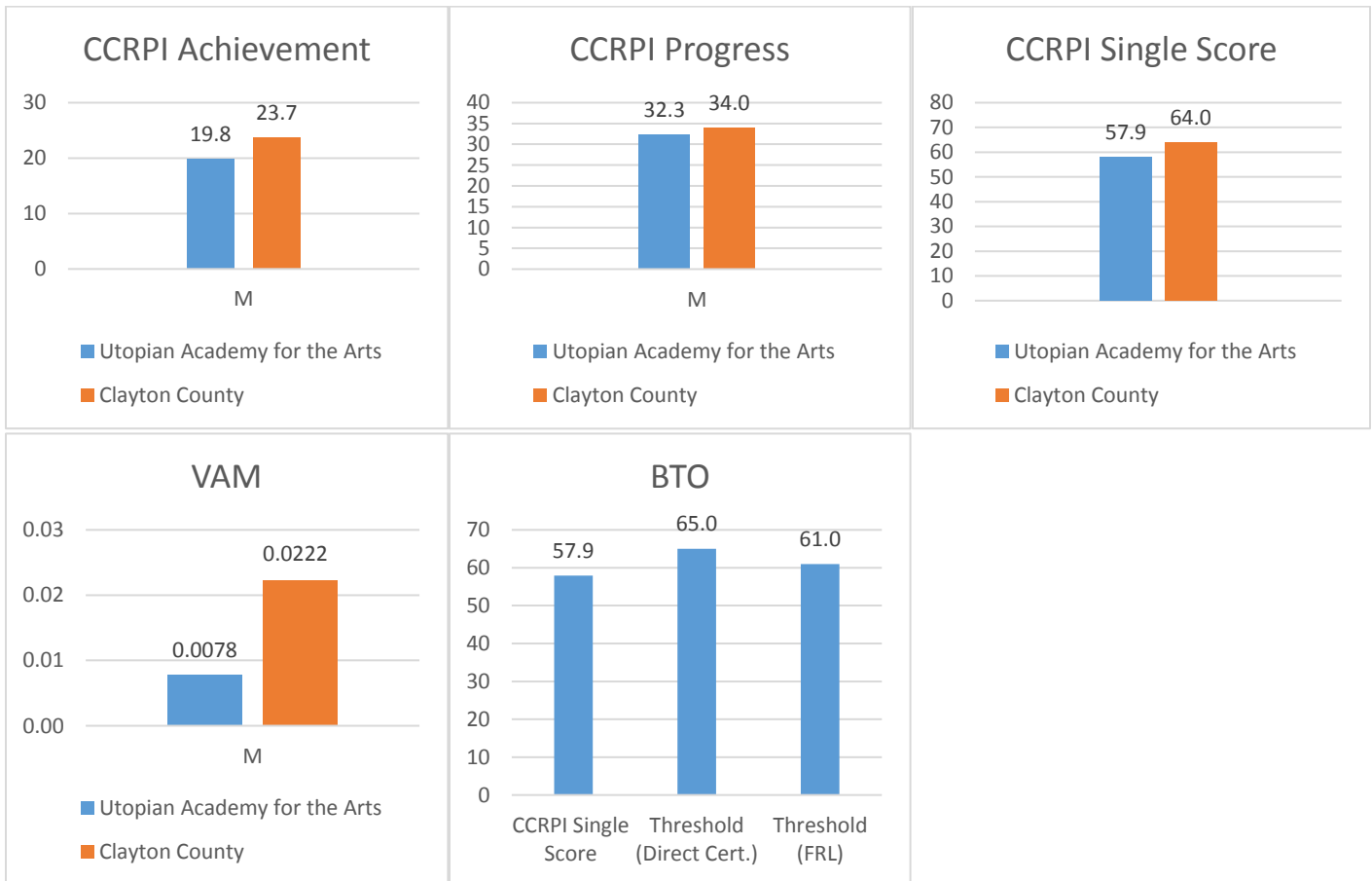
2015-2016 Academic Standing: Not Meeting Standards

Utopian Charter Academy is not meeting SCSC academic standards for the 2015-16 school year.

Performance on Comprehensive Performance Framework (CPF) Academic Standards

First Look Indicators			
Metric	Description	Met Standard?	Explanation
Indicator 1, Measure 1	Federal Performance Measures	N	Did Not Fulfill Requirements
Indicator 2, Measure 1	CCRPI Achievement	N	Did Not Outperform District
Indicator 2, Measure 2	CCRPI Progress*	N	Did Not Outperform District
Second Look Indicators			
Metric	Description	Met Standard?	Explanation
Part A	CCRPI Single Score	N	Did Not Outperform District
Part B	Value-Added Impact	N	Did Not Outperform District
Part C	Beating the Odds	N	Did Not Fulfill Requirements

*A school may satisfy academic requirements by earning a higher *CCRPI Progress* score in all grade bands or all grade bands in which the school did not earn a higher *CCRPI Achievement* score.



The elementary VAM score is not statistically different from the district score.

BTO uses the CCRPI Single Score without Challenge Points.

SECTION 5: TREND DATA

STATE CHARTER SCHOOL PERFORMANCE OVER TIME, CPF STANDINGS
Table 5.1, 2016 CPF Scoring Comparison to Prior Years, All Categories, In Alphabetical Order

School	2013-2014			2014-2015			2015-2016		
	ACA	FIN	OPS	ACA	FIN	OPS	ACA	FIN	OPS
Atlanta Heights Charter School	56	85	86	6	55	81	97	75	78
Statesboro STEAM	1	75	87	76	75	76	61	70	92
Cherokee Charter Academy	100	75	91	61	80	81	61	90	78
Coweta Charter Academy	100	45	95	61	50	77	97	70	82
Fulton Leadership Charter Aca.	100	85	78	62	80	86	2	90	87
Georgia Connections Academy	6	70	83	60	50	70	0	70	88
Ivy Prep Academy at Gwinnett	97	65	74	61	25	53	97	**	56
Ivy Prep Academy at Kirkwood	100	80	65	56	35	66	61		53
Mountain Ed. Charter HS	71	80	91	80	95	86	97	100	91
Pataula Charter Academy	100	85	88	100	80	86	98	80	81
Grad. Achiev. Charter HS	1	80	63	0	35	62	0	90	83
Odyssey Charter School	*			51	65	67	97	95	78
Georgia Cyber Academy				1	70	74	1	75	92
Utopian Academy for the Arts	...			81	20	68	1	40	68
Int'l Charter School of Atlanta			97	60	85
GA School for Innov. & the Classics			1	75	77
Foothills Education Charter HS			1	100	86
Scintilla Charter Academy			1	55	81
DuBois Integrity Academy			1	65	69

*Odyssey and GCA operated as a single entity prior to 2014. As a result, the current five-year charter term for both schools began in the 2014-2015 school year.

**Financial determination pending receipt of audit.

STATE CHARTER SCHOOL PERFORMANCE OVER TIME, CCRPI
Table 5.2, 2016 CCRPI Score Comparison to Prior Years, All Categories, In Alphabetical Order

E = Elementary, M = Middle, H =High

School Names (In Alphabetical Order)	Grade	Achievement Pts.			Progress Pts.			Achiev. Gap Pts.			CCRPI Score			Single Score		
		2014	2015	2016	2014	2015	2016	2014	2015	2016	2014	2015	2016	2014	2015	2016
State	E	48.1	29.7	30	15.9	33.8	33.8	5	6.7	6.7	72.7	76	71.7	72.3	75.5	73.6
Atlanta Heights Charter School	E	35.4	20.1	20.2	13.5	30.9	30.2	7	6.7	5.8	56.8	58.7	58.7	58.2	58.8	59.9
Cherokee Charter Academy	E	52.4	32.4	33.9	13.8	31.8	35.9	10	6.7	5.8	78.1	74.4	78.4	80.3	75	77.6
Coweta Charter Academy	E	55.6	37	35.3	16.1	32.1	32.6	10	6.7	5.8	83.4	79.1	74.7	84.1	75.6	74
Dubois Integrity Academy	E	DNS	DNS	11.9	DNS	DNS	18.1	DNS	DNS	3.3	DNS	DNS	33.8	DNS	DNS	33.8
Georgia Connections Academy	E	42	28.2	24.3	13.6	28	29.9	5	3.3	5	61.1	62	59.8	58.4	63.1	61.2
Georgia Cyber Academy	E	40.3*	26.3	26.3	13.8*	29.6	27.5	5.0*	3.3	3.3	59.1*	59.2	58.1	59.5*	61.7	59.3
Georgia School for Innovation and the Classics	E	DNS	DNS	21.1	DNS	DNS	29.6	DNS	DNS	4.2	DNS	DNS	55.4	DNS	DNS	54.9
International Charter School of Atlanta	E	DNS	DNS	32.2	DNS	DNS	30.9	DNS	DNS	NA	DNS	DNS	70.1	DNS	DNS	70.1
Ivy Prep Academy at Kirkwood for Girls	E	45.8	19.5	21.1	8.9	19.5	19.8	4	3.3	2.5	64.7	42.3	43.9	68.5	48.3	50.9
Odyssey Charter School	E	40.3*	24.1	29.6	13.8*	34	35	5.0*	5	6.7	59.1*	64.1	71.8	59.5*	65.3	71.6
Pataula Charter Academy	E	50.8	25.5	30.2	15.6	34.9	40	10	7.5	8.3	83.5	73.8	85.4	82.3	76.7	77.1
Scintilla Charter Academy	E	DNS	DNS	21	DNS	DNS	26.4	DNS	DNS	4.4	DNS	DNS	53.2	DNS	DNS	53.2
State	M	48.7	29.3	30.2	16.3	34.6	34.6	7	6.7	6.7	73.8	71.2	71.5	72.3	75.5	73.6
Atlanta Heights Charter School	M	37.8	18.9	22.4	16.3	33.8	34.2	5	5.8	5	60	64.3	63.6	58.2	58.8	59.9
Statesboro STEAM CCAT	M	43.2	24.9	24.9	11.7	34.7	26.6	2	TFS	3.3	56.9	67.4	54.8	60.4	69.2	64.3
Cherokee Charter Academy	M	52.6	31.1	32.6	16.8	35.9	33	12	6.7	6.7	83.4	77.6	75.1	80.3	75	77.6
Coweta Charter Academy	M	51.3	29.1	32.7	17.1	26.4	31.5	10	5	5.8	80.5	75.8	71.3	84.1	75.6	74
Fulton Leadership Academy	M	51.4	28.3	28	16.7	34.2	30.4	9	5.8	5.8	85.1	71.2	65.5	84.9	71.2	62
Georgia Connections Academy	M	42.5	29.5	27.7	14.1	29.6	28.9	7	5.8	5	65.6	71.2	62.2	58.4	63.1	61.2
Georgia Cyber Academy	M	42.5*	28.2	28.4	14.6*	31	29.3	8.0*	4.2	3.3	69.0*	71.2	61.5	59.5*	61.7	59.3
Georgia School for Innovation and the Classics	M	DNS	DNS	19.6	DNS	DNS	29	DNS	DNS	3.3	DNS	DNS	51.9	DNS	DNS	54.9
Ivy Preparatory Academy Gwinnett	M	54.2	33.6	31.7	14.8	34.6	29.3	10	5.8	5	82.8	78.1	68.2	79.7	73.3	68.2
Ivy Prep Academy at Kirkwood for Girls	M	41.9	18.9	25	15.5	35.8	36.3	11	6.7	8.3	75.7	66.3	69.6	68.5	48.3	50.9
Odyssey School	M	42.5*	29.5	28.1	14.6*	31	35.5	8.0*	5.8	6.7	69.0*	75.8	71.3	59.5*	65.3	71.6
Pataula Charter Academy	M	49.3	29	29.3	15.3	37.7	32.6	6	6.7	4.2	75.5	55.2	69.3	82.3	76.7	77.1
Utopian	M	DNS	23.4	19.8	DNS	33.7	32.3	DNS	6.7	5.8	DNS	62	57.9	DNS	63.8	57.9

(Table 5.2, Continued)

School Names (In Alphabetical Order)	Grade	Achievement Pts.			Progress Pts.			Achiev. Gap Pts.			CCRPI Score			Single Score		
		2014	2015	2016	2014	2015	2016	2014	2015	2016	2014	2015	2016	2014	2015	2016
State	H	43.6	32.8	34	15.7	34.3	34.3	7.5	6.7	6.7	68.4	75.8	75.7	72.3	75.5	73.6
Statesboro STEAM CCAT	H	41.8	28.5	32.3	12	36.5	36.1	TFS	TFS	NA	63.3	72.2	76	60.4	69.2	64.3
Foothills Charter High School	H	DNS	DNS	12.8	DNS	DNS	30.1	DNS	DNS	3.3	DNS	DNS	46.7	DNS	DNS	46.7
Fulton Leadership Academy	H	46.5	23.7	23	18	29.5	28.3	10	6.7	3.3	84.5	65.6	54.6	84.9	71.2	62
Georgia Connections Academy	H	30.7	23.2	24.6	13.1	32.1	30.7	6.3	5.8	5	51.3	61.4	61.3	58.4	63.1	61.2
Georgia Cyber Academy	H	30.3*	25.5	25.2	13.5*	31.4	28.3	2.5*	5	4.2	47.4*	61.9	58.2	59.5*	61.7	59.3
Graduation Achievement Charter High Sch. (Formerly Provost)	H	21.4	11.9	13.4	10.6	24.3	26.5	1.2	4.2	4.2	33.2	40.4	44.1	33.2	40.4	44.1
Ivy Preparatory Academy Gwinnett	H	34	20.6	DNS	13	26.9	DNS	TFS	TFS	DNS	55.3	52.8	NA	79.7	73.3	68.2
Mountain Education Center School	H	28.3	18.3	17.3	16.5	37.6	31	6.3	7.8	6.7	56.1	67.1	57.3	79.7	67.1	57.3
Pataula Charter Academy	H	50.8	32.5	28.1	20.9	36.3	31	TFS	10	6.7	84.4	83.4	67.7	82.3	76.7	77.1

TFS= Too Few Students, the school had fewer than 15 students taking the administered tests for the grade level in the indicated year.

DNS= Did Not Serve, the school did not serve that grade level during the indicated year.

NA= Indicator is not applicable OR data are not available

Notes:

This table evaluates state charter schools in comparison to their own prior performance NOT in comparison to the performance of the state or district(s).

Because of the changes to the way the CCRPI was calculated, Georgia Department of Education advises that a direct comparison between 2014 and 2015 scores is limited.

*Georgia Cyber Academy and Odyssey school began operating as two separate schools during the 2014-2015 school year. Prior to that, Georgia Cyber Academy operated as an attached program of Odyssey School. As a result, the 2013-2014 CCRPI score for GCA/Odyssey reflects the combined performance of both entities.

STATE CHARTER SCHOOL PERFORMANCE OVER TIME, VAM
Table 5.3, 2016 VAM Score Comparison to Prior Years, All Categories, In Alphabetical Order

School	Grade Cluster	2014	2015	2016
Atlanta Heights Charter Academy	E	-0.1152	-0.0201	0.0145
Cherokee Charter Academy	E	-0.1228	-0.0264	-0.0009
Coweta Charter Academy	E	0.0491	-0.0404	-0.0648
DuBois Integrity Academy	E	DNS	DNS	-0.2452
Georgia Connections Academy	E	-0.1212	-0.1057	-0.1140
Georgia Cyber Academy	E	-0.0694	-0.0937	-0.1598
Georgia School for Innovation and the Classics	E	DNS	DNS	-0.1943
International Charter School of Atlanta	E	DNS	DNS	-0.0434
Ivy Prep Academy at Kirkwood for Girls	E	-0.33	-0.2723	-0.1969
Odyssey	E	-0.0694	-0.0338	-0.0548
Pataula Charter Academy	E	-0.0091	0.0109	0.1212
Scintilla Charter Academy	E	DNS	DNS	-0.1681
Grade Cluster M				
Atlanta Heights Charter Academy	M	-0.0143	-0.0053	0.0489
Statesboro STEAM CCAT	M	-0.1966	0.0059	-0.2413
Cherokee Charter Academy	M	0.0727	0.091	-0.1008
Coweta Charter Academy	M	-0.0017	-0.1878	-0.0921
Fulton Leadership Academy	M	0.1033	0.0477	0.0039
Georgia Connections Academy	M	-0.0674	-0.057	-0.0827
Georgia Cyber Academy	M	-0.0256	-0.1136	-0.1084
Georgia School for Innovation and the Classics	M	DNS	DNS	-0.1506
Ivy Preparatory Academy at Gwinnett	M	-0.0027	0.0542	-0.1074
Ivy Prep Academy at Kirkwood for Girls	M	-0.0171	0.0254	0.0405
Odyssey	M	-0.0256	-0.0372	-0.0395
Pataula Charter Academy	M	-0.0332	0.045	-0.1116
Utopian	M	DNS	-0.0906	0.0078
		Percentage of EOC subject area assessments for which the school's impact on student achievement was higher than predicted based on its actual student population		
Statesboro STEAM CCAT	H	20% (1 of 5)	20% (1 of 5)	0%(0 of 4)
Cherokee Charter Academy	H	67% (2 of 3)	DNS	DNS
Foothills Education Charter High School	H	DNS	DNS	20% (1 of 5)
Fulton Leadership Academy	H	67% (2 of 3)	29% (2 of 7)	0% (0 of 5)
Georgia Connections Academy	H	25% (2 of 8)	25% (2 of 8)	25% (2 of 8)
Georgia Cyber Academy	H	0% (0 of 6)	25% (2 of 8)	25% (2 of 8)
Graduation Achievement Charter High School	H	0% (0 of 9)	0% (0 of 8)	0% (0 of 8)
Ivy Preparatory Academy at Gwinnett	H	100% (1 of 1)	33% (1 of 3)	DNS
Mountain Education Center School	H	50% (4 of 8)	50% (4 of 8)	13% (1 of 8)
Pataula Charter Academy	H	100% (4 of 4)	20% (1 of 5)	0% (0 of 7)

STATE CHARTER SCHOOL PERFORMANCE OVER TIME, BTO
Table 5.4, 2016 BTO Score Comparison to Prior Years, All Categories, In Alphabetical Order

School Names (In Alphabetical Order)	2014			2015			2016			
	Single Score	Predicted Threshold FRL Model	BTO?	Single Score	Predicted Threshold FRL Model	BTO?	Single Score	Predicted Threshold FRL Model	Predicted Threshold Direct Cert. Model	BTO?
Atlanta Heights Charter School	56.8	61.2	N	57.9	58.5	N	57.5	56.7	54.6	Y
Sratesboro STEAM CCAT	60.4	84.0	N	69.2	83.7	N	64.3	78.1	78.6	N
Cherokee Charter Academy	77.6	83.7	N	71.7	79.0	N	74.8	80.0	78.9	N
Coweta Charter Academy	81.6	85.5	N	72.9	80.4	N	72.9	80.7	79.6	N
Dubois Integrity Academy	DNS	DNS	NA	DNS	DNS	NA	33.3	61.8	63.3	N
Foothills Charter High School	DNS	DNS	NA	DNS	DNS	NA	46.2	70.8	59.3	N
Fulton Leadership Academy	76.4	63.5	Y	66	66.8	N	61.2	64.7	69.3	N
Georgia Connections Academy	57.1	72.6	N	61.7	70.6	N	60.4	75.6	69.9	N
Georgia Cyber Academy	57.9*	71.7*	N	61.4	73.4	N	58.6	81.9	75.2	N
Georgia School for Innovation and the Classics	DNS	DNS	NA	DNS	DNS	NA	54.4	83.6	74.0	N
Graduation Achievement Charter HS (formally Provost)	33.2	70.6	N	40.4	68.2	N	44.1	71.3	59.5	N
International Charter School of Atlanta	DNS	DNS	NA	DNS	DNS	NA	70.1	85.3	83.7	N
Ivy Preparatory Academy at Gwinnett	76.3	76.3	N	71.1	82.8	N	66.0	74.7	73.2	N
Ivy Preparatory Academy At Kirkwood	62	65.7	N	47.6	67.1	N	50.6	64.4	63.6	N
Mountain Education Charter High School	51.1	59.9	N	63.7	63.4	Y	55.0	57.4	64.3	Y**
Odyssey School	57.9*	71.7*	N	64.2	76.8	N	71.0	79.1	75.5	N
Pataula Charter Academy	75.4	75.0	Y	71.3	73.9	N	72.4	75.0	71.8	Y
Scintilla Charter Academy	DNS	DNS	NA	DNS	DNS	NA	51.8	71.9	73.1	N
Utopian Academy for the Arts	DNS	DNS	NA	63.8	77.2	N	57.9	61.0	65.0	N

DNS= Did Not Serve, the school did not serve that grade level during the indicated year.

NA= Indicator is not applicable OR data are not available

Notes:

In 2016, two regression models of Beating the Odds were calculated that measure economically disadvantaged students in different ways. The first model, which uses FRL, is identical to prior years, while the second uses direct certification. Schools that “beat the odds” in either model are deemed as “beating the odds.” For information [click here](#).

*Georgia Cyber Academy and Odyssey school began operating as two separate schools during the 2014-2015 school year. Prior to that, Georgia Cyber Academy operated as an attached program of Odyssey School. As a result, the 2013-2014 CCRPI score for GCA/Odyssey reflects the combined performance of both entities.

** After the initial release of BTO results for the 2015-16 school year, GOSA identified an error in the calculations. Upon fixing the error and re-running the calculations, Mountain Education Charter High School was no longer designated as “Beating the Odds”, however, GOSA and the GaDOE decided to “hold harmless” the schools that were originally “Beating the Odds” but are no longer in that category. For more information [click here](#).

APPENDICES:

Table A, Academic Designations Issued By State Education Agencies

Highlighted cells are intended to illustrate similarities amongst state agency designations and do not necessarily represent whether a school satisfied/did not satisfy SCSC academic requirements.

School	2013-2014 School Year					2014-2015 School Year					2015-2016 School Year				
	SCSC Academic Designation	GaDOE BTO Designation	GOSA Letter Grade	Bottom 25% of Schools	GaDOE CCRPI Score	SCSC Academic Designation	GOSA / GaDOE BTO Designation	GOSA Letter Grade	Bottom 25% of Schools	GaDOE CCRPI Score	SCSC Academic Designation	GOSA / GaDOE BTO Designation	GOSA Letter Grade	Bottom 25% of Schools	GaDOE CCRPI Score
Atlanta Heights	DNM	NOT Beating the Odds	F	Yes (12%)	58.2	DNM	NOT Beating the Odds	F	Yes (16%)	58.8	Met	BEATING the Odds	F	Yes (19%)	59.9
Cherokee Charter Acad.	Met	NOT Beating the Odds	B	No (65%)	80.3	DNM	NOT Beating the Odds	C	No (58%)	75	DNM	NOT Beating the Odds	C	No (64%)	77.6
Coweta Charter Acad.	Met	NOT Beating the Odds	B	No (75%)	84.1	DNM	NOT Beating the Odds	C	No (61%)	75.6	Met	NOT Beating the Odds	C	No (54%)	74
Fulton Ldrshp Charter Acad	Met	BEATING the Odds	B	No (78%)	84.9	DNM	NOT Beating the Odds	C	No (45%)	71.2	DNM	NOT Beating the Odds	D	Yes (23%)	62
GA Connections Acad.	DNM	NOT Beating the Odds	F	Yes (13%)	58.4	DNM	NOT Beating the Odds	D	Yes (24%)	63.1	DNM	NOT Beating the Odds	D	Yes (21%)	61.2
Ivy Prep Gwinnett	Met	NOT Beating the Odds	C	No (63%)	79.7	DNM	NOT Beating the Odds	C	No (54%)	73.3	Met	NOT Beating the Odds	D	No (38%)	68.2
Ivy Prep Kirkwood	Met	NOT Beating the Odds	D	No (33%)	68.5	DNM	NOT Beating the Odds	F	Yes (3.5%)	48.3	DNM	NOT Beating the Odds	F	Yes (6%)	50.9
Mountain Ed. Charter HS	Met	NOT Beating the Odds	F	Yes (9%)	56.1	Met	BEATING the Odds	D	No (34%)	67.1	Met	BEATING the Odds	F	Yes (14%)	57.3
Pataula	Met	Beating the Odds	B	No (70%)	82.3	Met	NOT Beating the Odds	C	No (64%)	76.7	Met	BEATING the Odds	C	No (63%)	77.1
Grad. Achiev. Charter HS	DNM	NOT Beating the Odds	F	Yes (0.1%)	33.2	DNM	NOT Beating the Odds	F	0.7%	40.4	DNM	NOT Beating the Odds	F	Yes (2%)	44.1
Odyssey School	Odyssey and GCA operated as a single entity prior to 2014. As a result, the new five-year charter term for both schools began in the 2014-2015 school year.					DNM	NOT Beating the Odds	D	No (29%)	65.3	Met	NOT Beating the Odds	C	No (48%)	71.6
Georgia Cyber Acad.						DNM	NOT Beating the Odds	D	21%	61.7	DNM	NOT Beating the Odds	F	Yes (17%)	59.3
Utopian						Met	NOT Beating the Odds	D	No (26%)	63.8	DNM	NOT Beating the Odds	F	Yes (15%)	57.9
Intl. Charter School of ATL						...					Met	NOT Beating the Odds	C	No (43%)	70.1
GA Ctr for Innov. & the Classics						...					DNM	NOT Beating the Odds	F	Yes (11%)	54.9
Foothills Ed. Charter HS						...					DNM	NOT Beating the Odds	F	Yes (3.1%)	46.8
Scintilla Charter Acad.						...					DNM	NOT Beating the Odds	F	Yes (8.5%)	53.2
DuBois Integrity Acad.						...					DNM	NOT Beating the Odds	F	Yes (0.4%)	33.8
Statesboro STEAM	(Previous charter term – Renewed 2016)					(Previous Charter Term – Renewed 2016)					(Previous Charter Term – Renewed 2016)				

TABLE B, CCRPI Achievement Sub-Score *by Grade Band*—60 Points Possible

E = Elementary, M = Middle, H =High

School Names	Grade Cluster	Achievement Points	Comparison District	District Score	Outperforming the District?
Atlanta Heights Charter School	E	20.2	APS	27.2	N
Cherokee Charter Academy	E	33.9	Cherokee	33.4	Y
Coweta Charter Academy	E	35.3	Coweta	30.8	Y
Dubois Integrity Academy	E	11.9	Clayton	22.9	N
Georgia Connections Academy	E	24.3	Statewide	30	N
Georgia Cyber Academy	E	26.3	Statewide	30	N
Georgia School for Innovation and the Classics	E	21.1	Statewide	30	N
International Charter School of Atlanta	E	32.2	Statewide	30	Y
Ivy Prep Academy at Kirkwood for Girls	E	21.1	DeKalb, APS	25,27.2	N
Odyssey School	E	29.6	Coweta	30.8	N
Pataula Charter Academy	E	30.2	Baker, Calhoun, Clay, Early, Randolph	19,20,19.4,26.3,18.8	Y
Scintilla Charter Academy	E	21.0	Lowndes, Valdosta City	34.9, 25.5	N
Middle School					
Atlanta Heights Charter School	M	22.4	APS	24.9	N
Statesboro STEAM CCAT	M	24.9	Bulloch	27.5	N
Cherokee Charter Academy	M	32.6	Cherokee	35	N
Coweta Charter Academy	M	32.7	Coweta	32.4	Y
Fulton Leadership Academy	M	28.0	Fulton	32.4	N
Georgia Connections Academy	M	27.7	Statewide	30.2	N
Georgia Cyber Academy	M	28.4	Statewide	30.2	N
Georgia School for Innovation and the Classics	M	19.6	Statewide	30.2	N
Ivy Preparatory Academy at Gwinnett	M	31.7	Gwinnett, Fulton, DeKalb	34.8,32.4,25.1	Y
Ivy Prep Academy at Kirkwood for Girls	M	25.0	APS, DeKalb	24.9,25.1	SAME
Odyssey School	M	28.1	Coweta	32.4	N
Pataula Charter Academy	M	29.3	Baker, Calhoun, Clay, Early, Randolph	22.5,19.1,19.6,28.8,17.8	Y
Utopian Academy for the Arts	M	19.8	Clayton	23.7	N

(Table B, Continued)

Statesboro STEAM CCAT	H	32.3	Bulloch	34.6	N
Foothills Charter High School	H	12.8	Statewide	34	N
Fulton Leadership Academy	H	23.0	Fulton	37.4	N
Georgia Connections Academy	H	24.6	Statewide	34	N
Georgia Cyber Academy	H	25.2	Statewide	34	N
Graduation Achievement Charter High School	H	13.4	Statewide	34	N
Ivy Prep Academy at Kirkwood for Girls**	H	NA	DeKalb, APS	29.5,26.6	N/A
Ivy Preparatory Academy at Gwinnett**	H	NA	Gwinnett, Fulton, DeKalb	37.1,37.4,29.5	N/A
Mountain Education Center School	H	17.3	Statewide	34	N
Pataula Charter Academy	H	28.1	Baker, Calhoun, Clay, Early, and Randolph	31,31.6, N/A,30,23.7	N

** Denotes that the school closed before students took the annual standardized assessments, thus no scores can be generated.

TABLE C, CCRPI Progress Sub-Score *by Grade Band*—40 Points Possible

E = Elementary, M = Middle, H =High

School Names	Grade Cluster	Progress Points	Comparison District	District Score	Outperforming the District?
Atlanta Heights Charter School	E	30.2	APS	32.6	N
Cherokee Charter Academy	E	35.9	Cherokee	36.4	N
Coweta Charter Academy	E	32.6	Coweta	32.4	Y
Dubois Integrity Academy	E	18.1	Clayton	33.1	N
Georgia Connections Academy	E	29.9	Statewide	33.8	N
Georgia Cyber Academy	E	27.5	Statewide	33.8	N
Georgia School for Innovation and the Classics	E	29.6	Statewide	33.8	N
International Charter School of Atlanta	E	30.9	Statewide	33.8	N
Ivy Prep Academy at Kirkwood for Girls	E	19.8	DeKalb, APS	32,32.6	N
Odyssey School	E	35.0	Coweta	32.4	Y
Pataula Charter Academy	E	40.0	Baker, Calhoun, Clay, Early, Randolph	24.8,30.1,37.4,33,29.9	Y
Scintilla Charter Academy	E	26.4	Lowndes, Valdosta City	35.4, 30.1	N
Separator					
Atlanta Heights Charter School	M	34.2	APS	31.6	Y
Statesboro STEAM CCAT	M	26.6	Bulloch	35.5	N
Cherokee Charter Academy	M	33.0	Cherokee	38.1	N
Coweta Charter Academy	M	31.5	Coweta	35.1	N
Fulton Leadership Academy	M	30.4	Fulton	33	N
Georgia Connections Academy	M	28.9	Statewide	34.6	N
Georgia Cyber Academy	M	29.3	Statewide	34.6	N
Georgia School for Innovation and the Classics	M	29.0	Statewide	34.6	N
Ivy Preparatory Academy at Gwinnett	M	29.3	Gwinnett, Fulton, DeKalb	36.8,33,33.7	N
Ivy Prep Academy at Kirkwood for Girls	M	36.3	APS, DeKalb	31.6,33.7	Y
Odyssey School	M	35.5	Coweta	35.1	Y
Pataula Charter Academy	M	32.6	Baker, Calhoun, Clay, Early, Randolph	38.3,32.8,29.7,38.4,29.2	N
Utopian Academy for the Arts	M	32.3	Clayton	34	N

(Table C, Continued)

Statesboro STEAM CCAT	H	36.1	Bulloch	34.2	Y
Foothills Charter High School	H	30.1	Statewide	34.3	N
Fulton Leadership Academy	H	28.3	Fulton	35.5	N
Georgia Connections Academy	H	30.7	Statewide	34.3	N
Georgia Cyber Academy	H	28.3	Statewide	34.3	N
Graduation Achievement Charter High School	H	26.5	Statewide	34.3	N
Ivy Prep Academy at Kirkwood for Girls**	H	NA	DeKalb, APS	36.7,31.4	N/A
Ivy Preparatory Academy at Gwinnett**	H	NA	Gwinnett, Fulton, DeKalb	34.1,35.5,36.7	N/A
Mountain Education Center School	H	31.0	Statewide	34.3	N
Pataula Charter Academy	H	31.0	Baker, Calhoun, Clay, Early, and Randolph	38.3,37.1, N/A,25.6,30.6	N

** Denotes that the school closed before students took the annual standardized assessments, thus no scores can be generated.