

# Supplemental Support Programs to Jump Start Your School

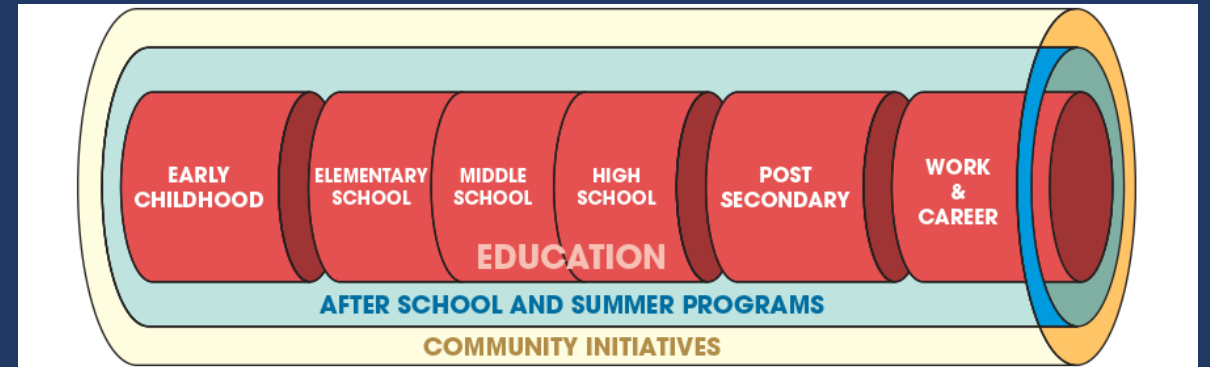


# Types of Supplemental Programs



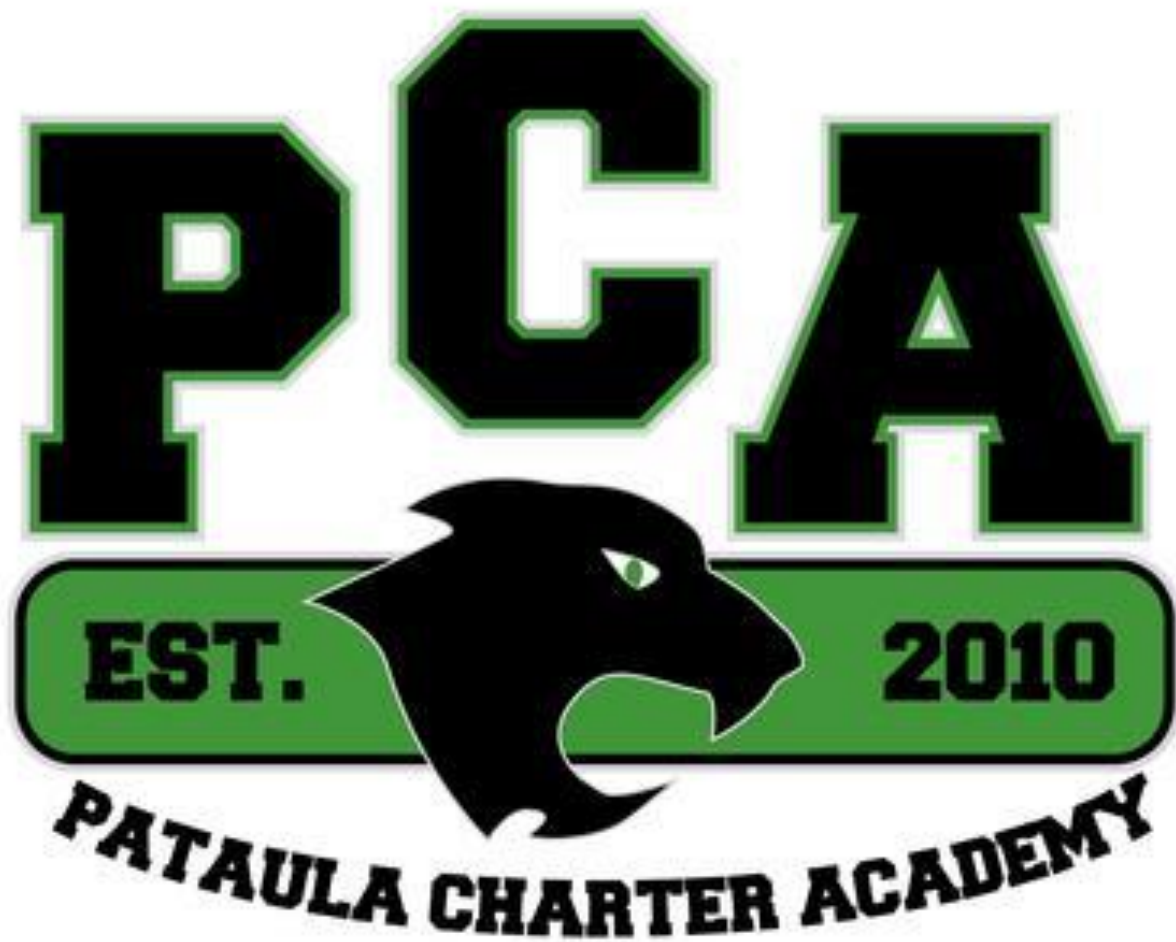
# Purpose of Session

- Supplemental support programs can help your school by...



# Operational and Financial Implications

- If you have a before/after school program – your school **must** receive a licensure exemption from the Georgia Department of Early Care and Learning. See SCSC guidance document [here](#) for additional information.
- Georgia's Pre-K program has its own set of guidelines and requirements that you must comply with. You can also have an enrollment priority for students in your Pre-K class when you conduct a lottery for kindergarten, but you wouldn't be eligible for a Charter School Program (CSP) grant. (This is a federal requirement, not a SCSC/GaDOE requirement.)
- Ensure that you have the proper internal controls and policies for dealing with cash from fundraisers.





**International**  
CHARTER SCHOOL  
OF ATLANTA