

# Charter Schools: Federal Programs 101

Charter School Commission Workshop  
May 8, 2014



Dr. John D. Barge, State School Superintendent  
*"Making Education Work for All Georgians"*  
[www.gadoe.org](http://www.gadoe.org)

# Presenter

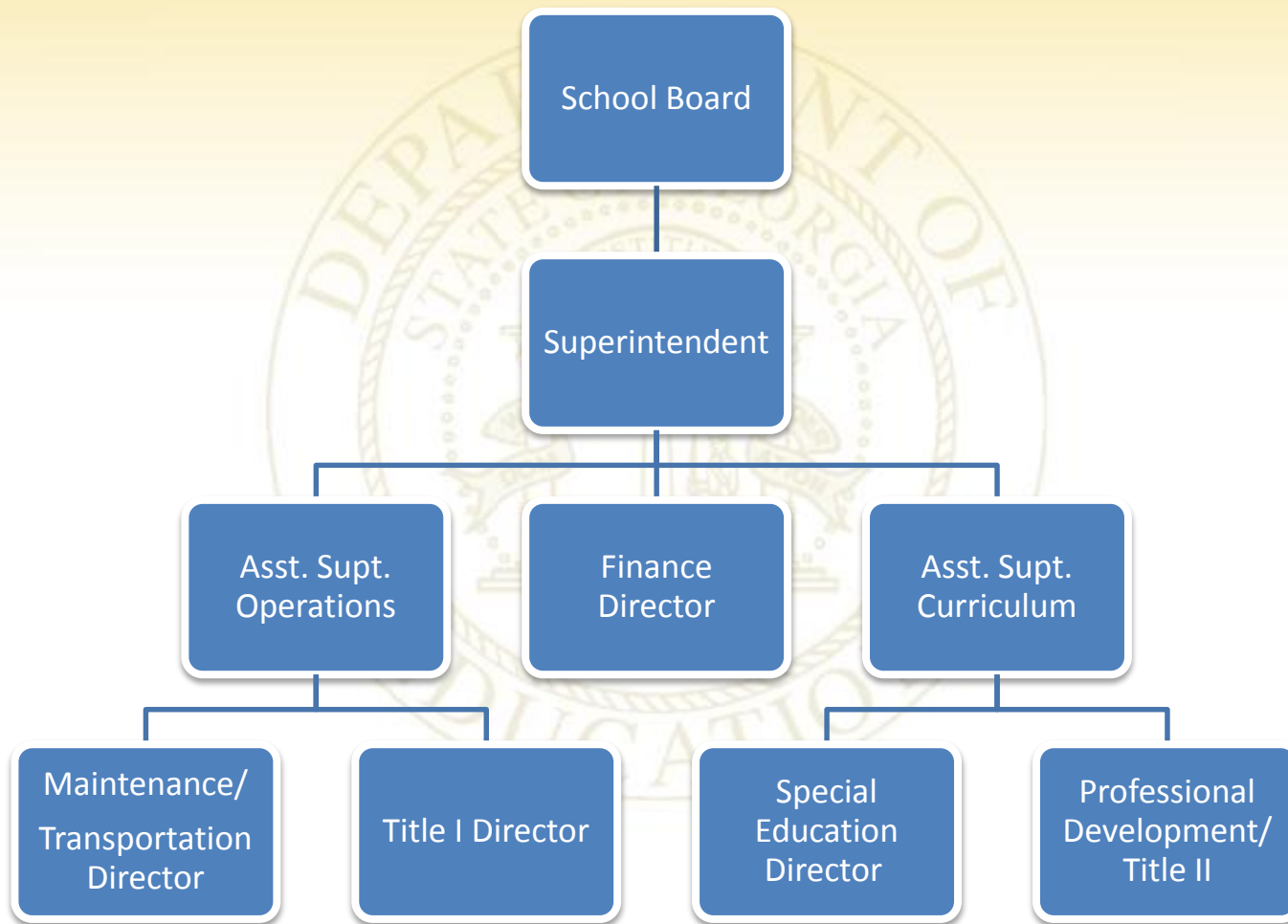
**Randy Phillips, Ed. D.**  
**Georgia Department of Education**  
**Title I Education Program Specialist**  
**[rphillips@doe.k12.ga.us](mailto:rphillips@doe.k12.ga.us)**  
**(770) 334-8390**



# Where to begin . . .



# Regular LEA Leadership Team



# Charter LEA Leadership Team

School  
Board

Superintendent

Asst. Supt., Curriculum Director,  
Federal Programs Manager,  
Maintenance, Transportation, Finance,  
Principal, Cafeteria Manager, etc.



# How Does One Start Out with Federal Programs?



Dr. John D. Barge, State School Superintendent  
*"Making Education Work for All Georgians"*  
[www.gadoe.org](http://www.gadoe.org)

# Title Program Contacts

## Title I

Margo DeLaune – [mdelaune@doe.k12.ga.us](mailto:mdelaune@doe.k12.ga.us)

## Title II

Sharon Brown – [sharon.brown@gapsc.com](mailto:sharon.brown@gapsc.com)

## Title III

Cori Alston – [calston@doe.k12.ga.us](mailto:calston@doe.k12.ga.us)

## Special Education

Harry Repsher – [hrepsher@doe.k12.ga.us](mailto:hrepsher@doe.k12.ga.us)





# Georgia Department of Education

Making Education Work For All Georgians!

Search this site...

Select Language

Follow Us: Facebook Twitter RSS



Dr. John D. Barge, State School Superintendent

Home

Students

Parents

Teachers

Business & Industry

Contact Us



## Disaster Preparedness

Georgia's Education Response

1 2 3 4 5



## School Reports

- By State
- By District
- By School

## How Do I....

### Students

- Georgia Career
- Clusters/Pathways Programs of Study
- Take Classes Online
- Prepare for EOCT, GHSGT,

### Parents

- Georgia Career
- Clusters/Pathways Programs of Study
- Find Schools in my Area
- Discover What My Child is

### Teachers

- Child Abuse Reporting Mandate
- Georgia Career
- Clusters/Pathways Programs of Study
- Access the Free Georgia Virtual

## News & Announcements

Release Date	Title
5/5/2014	Teacher Appreciation Week: Here's to the Teacher
5/5/2014	GaDOE Updates Newsletter: May 1, 2014
5/5/2014	GaDOE Updates





Read More

## Educational Agencies



### Departments

- Organization Structure
- Curriculum, Instruction and Assessments
- External Affairs and Policy
- Finance and Business Operations
- Race to the Top (RT3)
- School Improvement
- Technology Services

### Programs & Initiatives

- Career Clusters/Pathways
- Charter Schools
- Career, Technical, and Agricultural Education

### Data & Reports

- Career, Technical, and Agricultural Education Reports
- CCRPI Reports
- Financial Reports
- School Reports
- Adequate Yearly Progress (AYP)
- MyGaDOE Login



### Learning & Curriculum


- GeorgiaStandards.org
- Standards & Curriculum
- Testing/Assessment

### GaDOE

- About Us
- Policies
- State Board of Education
- Working at GaDOE
- Content Management Login



## MyGaDOE



### Please Log In

**Username:**

**Password:**

[I forgot my passphrase!](#)

[Or sign up for an account](#)

#### Helpful links

- [MyGaDOE Online Guide](#)
- [GaDOE Public Website](#)
- [Information Systems](#)
- [AYP & NCLB](#)
- [Georgia Standards](#)
- [Data Collections](#)
- [Financial Reports](#)
- [Report Card](#)

This website requires cookies to be enabled in your browser.

Username = your email address  
Password – Assigned by DOE then changed by you

# MyGaDOE Account

## Title I Director Roles:

## Superintendent Roles:

Portal – User

Consolidated Application – School System User

Title I LEA – District Coordinator

Title I Comparability - Submitter

Portal – User

Consolidated Application – Superintendent

Title I LEA – Superintendent

Title I Comparability – Superintendent





- Site Navigation
  - Home
  - Logout
- Title I
  - View Alerts
  - View Calendar
  - Consolidated Application
  - Error Admin
  - View Documents
  - Facility and School Registry
  - GAORS
  - View News
  - Facilities - Archive
  - Title I LEA
  - Message Center
  - Grants Application
  - Security Administration
  - Title I Comparability



- Administration
  - Title Programs
  - CTAE Programs
  - Special Education
- Application
- Online Help
- Reports
- Manage Public Schools

### Headline News

#### Communications Update



Each month in the internal e-newsletter we will focus on a particular division of the GaDOE. Since this is the first internal e-newsletter, we thought it would be appropriate to begin with Communications since we are developing it. ... since we have several new members of the team, ... for what information.

[More](#)

### Site News

Headline	State	District	School
Communications Update			
State Board of Education Public Hearing November 9, 2005, 1-2 p.m.			

[More](#)

### My Favorites

No Favorites

[More](#)

### Calendar

Daily	Weekly	Monthly
No Daily Events		

[More](#)

### Surveys

New (0)	Saved (0)	Submitted (0)	Approved (0)
No new surveys available			

[More](#)

- Randy Phillips
  - Account Information
  - Add to Favorites
  - Help - Dticket

Hide Navigation



**Site Navigation**

- Home
- Logout

**Title I**

- View Alerts
- View Calendar
- Consolidated Application
- Error Admin
- View Documents
- Facility and School Registry
- GAORS
- View News
- Facilities - Archive
- Title I LEA
- Message Center
- Grants Application
- Security Administration
- Title I Comparability

**Randy Phillips**

- Account Information
- Add to Favorites
- Help - Dticket

Hide Navigation <<

**Headline News** options | ☰

### Communications Update

Each month in the internal e-newsletter we will focus on a particular division of the GaDOE. Since this is the first internal e-newsletter, we thought it would be appropriate to begin with Communications since we are developing it. ... since we have several new members of the team, ... for what information.

Are...

[More](#)

**Calendar** options | ☰

Daily Weekly Monthly

No Daily Events

[More](#)

**Surveys** options | ☰

New (0) Saved (0) Submitted (0) Approved (0)

No new surveys available

[More](#)

**Site News** options | ☰

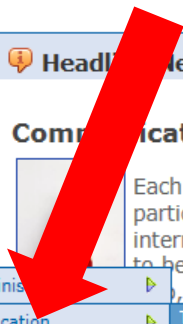
Headline	State	District	School
Communications Update			
State Board of Education Public Hearing November 9, 2005, 1-2 p.m.			

[More](#)

**My Favorites** options | ☰

No Favorites

[More](#)



- Adminis...
- Application** Title Programs CTAE Programs Special Education
- Online Help
- Reports
- Manage Public Schools



**Site Navigation**

- Home
- Logout

**Title I**

- View Alerts
- View Calendar
- Consolidated Application
- Error Admin
- View Documents
- Facility and School Registry
- GAORS
- View News
- Facilities - Archive
- Title I LEA
- Message Center
- Grants Application
- Security Administration
- Title I Comparability


**Randy Phillips**

- Account Information
- Add to Favorites
- Help - Dticket

Hide Navigation <<

**Headline News** options | ☰

### Communications Update



Each month in the internal e-newsletter we will focus on a particular division of GaDOE. Since this is the first internal e-newsletter, I thought it would be appropriate to begin with Communications since we are developing it. ... since we have several new members of the team, ... for what information.

Are...

[More](#)

- Administration
  - Title Programs
  - CTAE Programs
  - Special Education
- Application
- Online Help
- Reports
- Manage Public Schools

**Site News** options | ☰

Headline	State	District	School
Communications Update			
State Board of Education Public Hearing November 9, 2005, 1-2 p.m.			

[More](#)

**My Favorites** options | ☰

No Favorites

[More](#)

**Calendar** options | ☰

Daily Weekly Monthly

No Daily Events

[More](#)

**Surveys** options | ☰

New (0)	Saved (0)	Submitted (0)	Approved (0)
---------	-----------	---------------	--------------

No new surveys available

[More](#)

# Comprehensive LEA Implementation Plan (CLIP)

1. 31 Program Descriptors (See Handout)
  - a. Descriptors address ALL Federal Programs
  - b. All program decisions based on an overall needs assessment
2. All Federal Program Managers must approve before a budget can be approved or before funds can be expended!
3. Requirement – Parental Involvement!
4. Due Date – August 1 each year!



# Comprehensive LEA Implementation Plan (CLIP)

All federal program initiatives/expenditures  
must correspond with  
the identified academic achievement needs  
of the students, staff, and parents  
as outlined in the CLIP.

**If not found in the CLIP,  
it can't be funded with federal funds.**





# Federal Programs

## Title I

At-Risk Student Achievement, Parental Involvement, Homeless, Migrant Education, Neglected & Delinquent

## Title II

Professional Development, Equity/Retention Plans, Technology, Teacher Certification

## Title III

Identification, Assessment, and Instruction of ELs

## Special Education



# Charter School Waivers

Charter schools and systems are subject to all provisions outlined in O.C.G.A. 20-2-2065(b). In particular, charter schools may not waive state laws or State Board of Education rules pertaining to health and safety, funding formulas, or accountability provisions. **In addition, charter schools may not waive any aspect of Federal law.** This includes the Elementary and Secondary Education Act of 1965 (including Title I, Part A), the Individuals with Disabilities Education Act (IDEA), and all applicable civil rights legislation.



# The Role of Educational Management Organizations

The charter school's governing board has the decision making authority, **NOT** the educational management organization (EMO). EMO representatives cannot sit on the governing board of a charter school, as this presents a conflict of interest.



# The Role of Educational Management Organizations

EMO's do not approve your plans or budgets!

You contract for the services of an EMO –  
Not visa-versa!

EMO intervention could violate your charter!



# What is Title I?



Dr. John D. Barge, State School Superintendent  
*"Making Education Work for All Georgians"*  
[www.gadoe.org](http://www.gadoe.org)

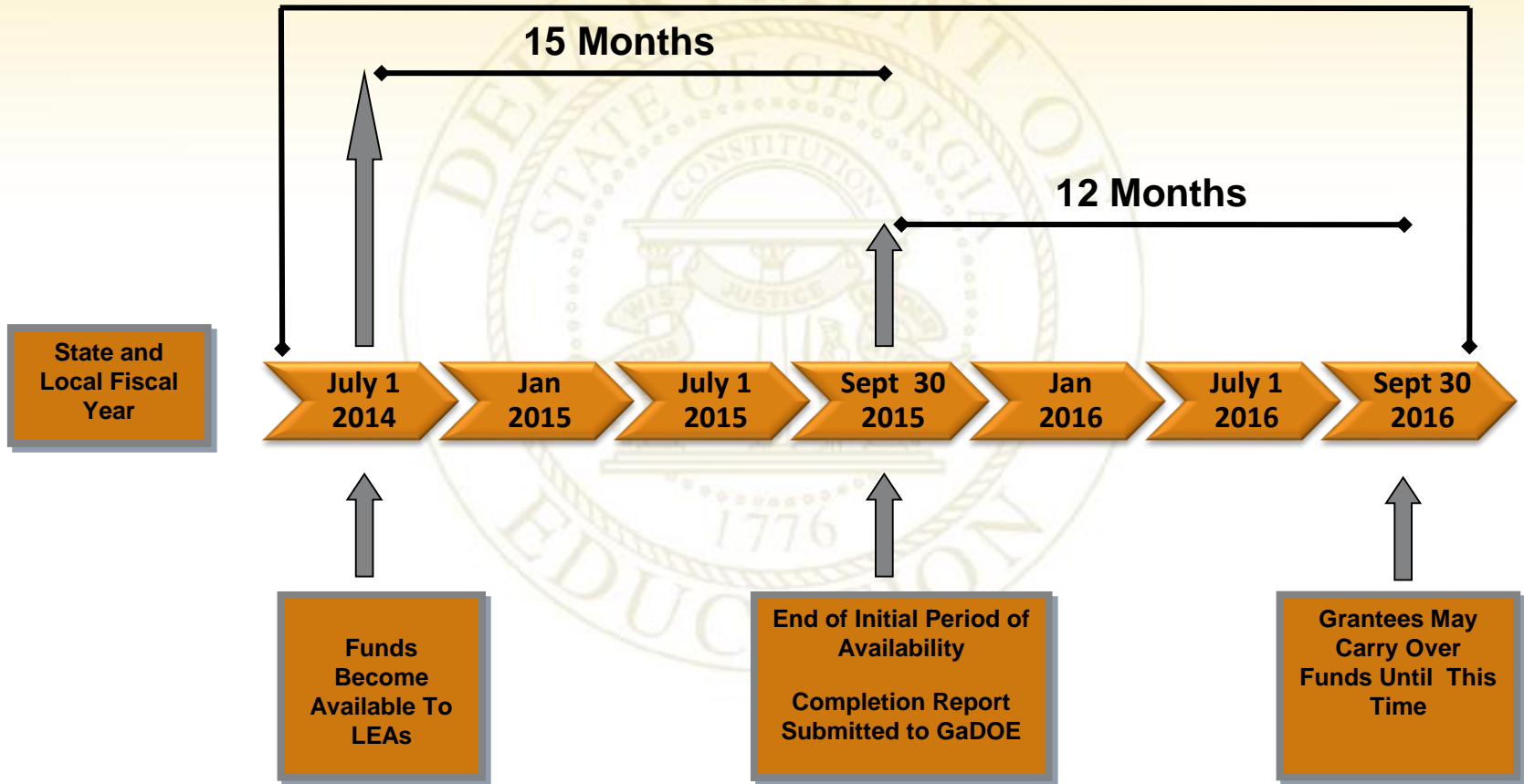
# Title I, Part A

Title I, Part A is a part of the Elementary and Secondary Education Act (ESEA). This act provides federal funds through the Georgia Department of Education to local educational agencies (LEAs) and public schools with high percentages of poor children to help ensure that all children meet challenging State academic content and student academic achievement standards.



# Availability of Title I Funds

27 Months of Availability



# Title I

\$\$ Earned by  
number/percentage of  
F/R Lunch

\$\$ Serve Most  
Academically At-Risk  
Students

How are you going to  
verify this data?

How are you going to  
serve your students?

Targeted Assisted

Schoolwide





# Targeted Assistance Program

Identify Your Academic Needs As a School

Write a Title I Plan  
(Refer to TA Checklist)

Develop Multi-Criteria, Academic-based Selection Process

Create Rank Order Listing of ALL Students

Determine Cut-Off  
(What \$\$ will allow)

Serve ONLY Identified Students

Evaluate Annually



# Schoolwide Program

40% F/R  
Minimum



Identify Your Academic  
Needs As a School

Write a Title I Plan  
(Refer to SWP Checklist)

~~Develop Multi-  
Cultural Academic  
Enriched Selection~~

~~Create  
Risk Order Listing  
of ALL Students~~

~~Determine  
Cutoff  
(What \$\$ will flow)~~

Serve ALL Students

Evaluate Annually



# Items To Address

## 1. Budget Process

- Chart of Accounts (Function & Object Codes)
  - 1000 – Instructional (Students)
  - 2210 – Staff Development (Teachers)
  - 2230 – Administrative Costs
  - 2900 – Support Services (Parents)
  - 2700 – Student Travel (Field Trips – Be Cautious!!!)
- Reimbursement is NOT an Option!
- Instructional Program Must Be Evident Through Budget
- Learn/Know Your LEA's Financial Internal Controls



# Items To Address

## 2. Parent Involvement

- Most Frequent Weakness Found
  - Need More Than PTO President & Treasurer Involved
  - Involve All Parents (Especially Parents of Title I Students)
  - Documentation Required
    - Notification (Invitations/Newsletters/Phone-Logs)
    - Agendas & Sign-in Sheets
- Parent Involvement Policy (Checklist)
- Parent's Right-To-Know
- Notification of Teacher HQT Status



# Items To Address

3. HQT (Highly Qualified Teacher)
  - Some Flexibility Under PSC Definitions
  - No Option for Title I Funded Teacher/Parapro
  - Principal Attestation
4. Periodic Certification
  - After-the-Fact Documentation
  - Required Twice Each Year
5. Time Logs
6. GaMEP Occupational Surveys (Title I, Part C)



# Newly Opened or Significant Growth/Expansion

A charter school that is newly opening or significantly expanding its enrollment must provide, in writing to the State educational agency (SEA) or local educational agency (LEA), by **April 1** of the preceding year the charter school plans to open or significantly expand. If the charter school does not provide this timely notice, the SEA or LEA is relieved of most of its obligation to provide the federal funds within the five month period.



# Significant Growth/Expansion

In order for a charter school in the state of Georgia to meet qualifications for status as a significantly expanding school, a charter school must meet at least one of the following:

1. Projected enrollment growth must exceed 33% of the previous year's October FTE-1 enrollment.
2. Expansion of more than one grade level as outlined in a predetermined program growth design in the charter school approved charter or a newly approved charter school amendment.



# Significant Growth/Expansion

Charter Schools that meet the qualifications for significant expansion will receive an adjusted Title I allocation after the enrollment report of the October FTE-1 and the Free or Reduced Priced Meal reports of the new fiscal year have been successfully verified.





# Significant Growth/Expansion

Charter schools that are NOT experiencing enrollment growth qualifications will be funded on the previous October FTE-1 and state free/reduced priced meal figures, as it is done with all other Georgia public schools/systems.



# Supplement vs. Supplant

- All federal fund expenditures or activities must be above and beyond (supplement) what is required by state or local regulation
- Ask yourself . . . Would I have to do this if federal funds were not available? If the answer is yes . . . Then using federal funds would be supplanting.



# Maintenance of Effort (MOE)

- A measure of state/local funded expenditures for student instruction from one year to the next analyzed to check for supplanting
- State/local expenditures must be within 10% of the previous year's expenditures
- If maintenance of effort is not met, federal funds are reduced by the percentage outside the 10% allowable variance.



## Charter School Maintenance of Effort (MOE) Waiver Title I Program

The State Charter School/Local Education Agency (LEA) noted below recognizes Federal program requirements for LEAs to verify documentation and maintenance of equivalent financial expenditures of state and local funds for their students from one year to the next. The expenditures from one year to the next should not exceed a 10% difference.

Current FY15 Federal funding is contingent upon maintenance of effort (MOE) being documented between FY12 and FY13. Since this LEA was not in existence prior to FY13 as a State Charter School, it is impossible for this requirement to be met. In fact, this LEA will be unable to meet this requirement until it has been in existence three consecutive years.

Signatures below recognize the above facts and the obligation of the LEA to meet MOE requirements when possible and to follow practices during the current budgeting years to result in MOE being maintained.

State Charter/Commissioned School \_\_\_\_\_

Official Signatures:  
Superintendent/Director \_\_\_\_\_ Date \_\_\_\_\_

Title I Coordinator \_\_\_\_\_ Date \_\_\_\_\_



# Other Possible Issues

- Comparability
- Poverty Determination
- Private Schools
- Neglected & Delinquent Facilities
- Migrant Education
- Homeless
- Issues from the floor . . .



# CHARTER SCHOOL CALENDAR - TITLE I IMPLEMENTATION

FY 14	1	2	3	4	5	6	7	8	9	10	11	12	13	14	15	16	17	18	19	20	21	22	23	24	25	26	27	28	29	30	31
JUNE	FY15 LEA CLIP Review								Annual Title Programs Conf.																						
JULY	Submit CLIP				Title I Budget Compilation																School Level Planning Mtgs					Conduct/Complete Homeless Surveys					
AUGUST	SWP Intent Application					Title I Annual Mtg. w/ Parents								Submit Title I Budget																	
SEPTEMBER	Assess HiQ status of staff/ Obtain Principal Assurance / Notify Parents										Attend Regional Title I Mtg.																				
OCTOBER	Attend Monitoring Training (If Applicable)										Submit FY14 Completion Report																				
NOVEMBER	Prepare Monitoring Folders (If Applicable)																														
DECEMBER	Submit Budget Amendment					Schedule TA for Monitoring (If Applicable)																									
JANUARY	Periodic Cert #1					Conduct Annual Inventory Check																									
FEBRUARY	Review Title I Spending To Date						Attend GCEL																								
MARCH	Collect and Analyze Student Achievement Data										Submit Expansion Letter (if Applicable)																				
APRIL	FY16 LEA CLIP Review								Conduct Parent Involvement Surveys (Workshops, PI Policy Revisions, etc.)																						
MAY	Final LEA CLIP, SWP, PI Policy, & Compact Review Meetings										Submit Final Budget Amendment						Complete Self-Evaluation				Periodic Cert #2										

# Dates of Note – Title I


Date	Requirement
April 1	Notification of LEA of expansion/growth for upcoming year
June 17-20	Title Programs Summer Conference – Atlanta
July 1	Title I Allocations Awarded – Beginning of Fiscal Year
August 1	Comprehensive LEA Improvement Plan (CLIP) submitted for approval
August 15	Letter of Intent to transition from Targeted (TA) to Schoolwide (SWP)
October 1	District Title I Budget due for review/approval – School Much Earlier
October 31	Completion reports for previous fiscal year due to DOE
January 1	Typical 5 <sup>th</sup> month of school – Thus adjusted allocations in place for those charter schools that experience growth/expansion
February	Annual GCEL Conference (optional)
May 15	Last date to submit budget amendments



# Where to begin . . .





A long, straight asphalt road with a double yellow line down the center, stretching from the foreground into the distance. The road is flanked by dry, scrubby vegetation and a flat horizon. The sky is filled with large, dark, dramatic clouds, with some light breaking through near the horizon. The overall mood is one of vastness and choice.

**Choose Your Pathway . . .  
This Way . . .**



**... Or This Way?**

# State Title I Contact for Charter Schools

**Randy Phillips, Ed. D.**  
**Georgia Department of Education**  
**Title I Education Program Specialist**  
**[rphillips@doe.k12.ga.us](mailto:rphillips@doe.k12.ga.us)**  
**(770) 334-8390**

